



Fugoo Tough XL Case Replacement

This guide would show you how to remove the front and back case.

Written By: Abdul



INTRODUCTION

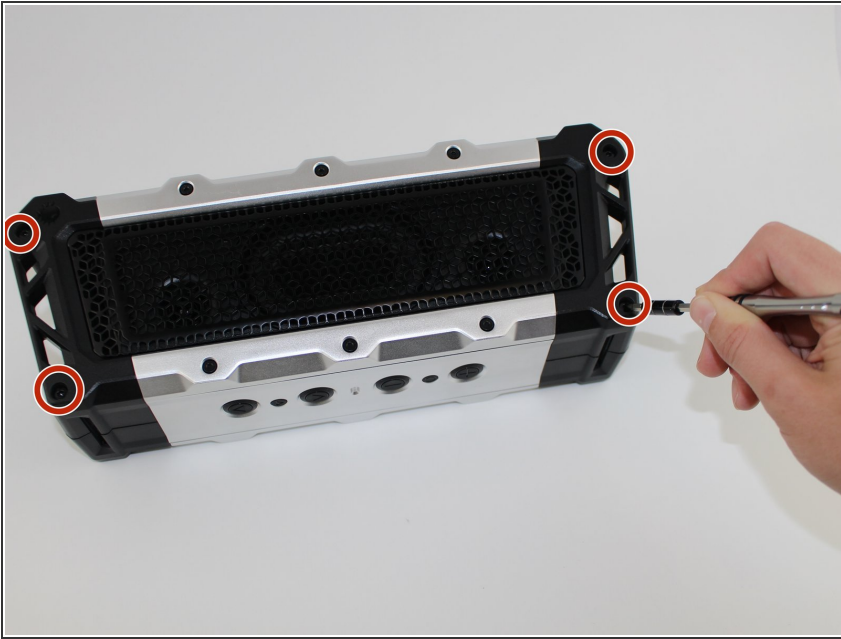
The Fugoo Tough XL speaker has an external shell that can be removed to make necessary repairs.



TOOLS:

- [iFixit Opening Tools](#) (1)
 - [T10 Torx Screwdriver](#) (1)
 - [3mm Hex Key \(or Bit\)](#) (1)
-

Step 1 — Case




- Use a #3 Hex screwdriver to unscrew all four 3mm screws."

Step 2



- Gently remove the outer shell.

 It should be relatively easy to pull apart. Don't be afraid to apply a necessary force.

Step 3



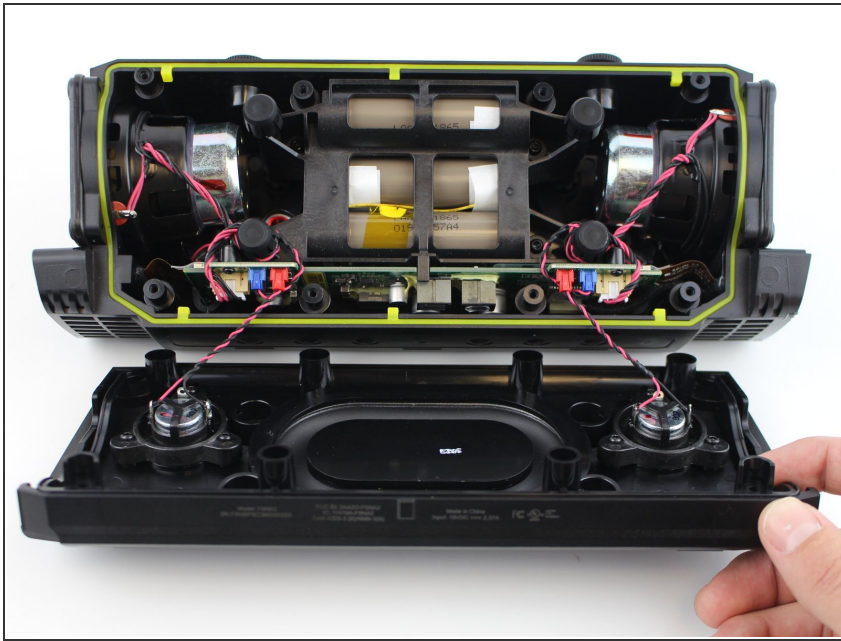
- Pull out the device from the external case.
- Unscrew all 12mm T Head screws using a T10 screwdriver.
- Unscrew all 6mm T Head screws using a T10 screwdriver.

Step 4




- Gently remove the side plates by using your hands to pull off.
 - Use plastic opening tool to pry off the back plate.
- ⓘ Work on the side with the Fugoo trademark.

Step 5



- Pull apart the front casing from the back casing, slowly. Try to avoid any tension on any of the connected cables.

 Separate at a slow constant force to avoid damage to the speaker cables.

To reassemble your device, follow these instructions in reverse order.