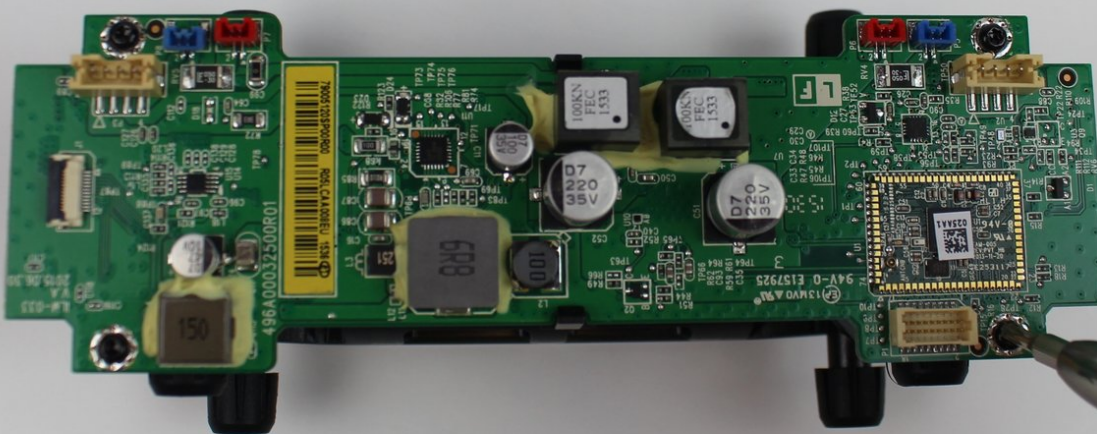




Fugoo Tough XL Motherboard Replacement

This guide would show you how to remove the shell and replace the motherboard.

Written By: Abdul



INTRODUCTION

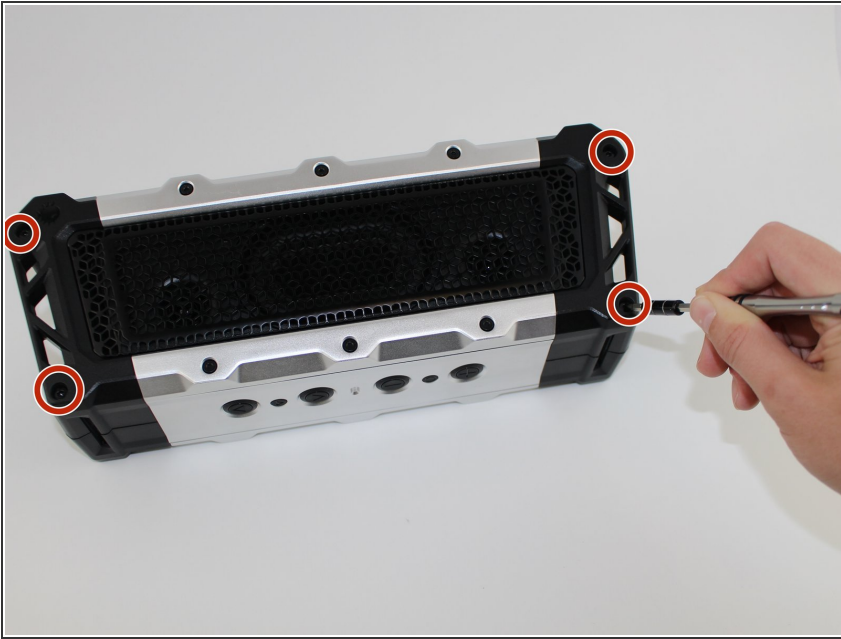
Use this guide to remove and replace the motherboard.



TOOLS:

- [3mm Hex Key \(or Bit\)](#) (1)
 - [iFixit Opening Tools](#) (1)
 - [T10 Torx Screwdriver](#) (1)
 - [Tweezers](#) (1)
-

Step 1 — Case




- Use a #3 Hex screwdriver to unscrew all four 3mm screws."

Step 2



- Gently remove the outer shell.

 It should be relatively easy to pull apart. Don't be afraid to apply a necessary force.

Step 3



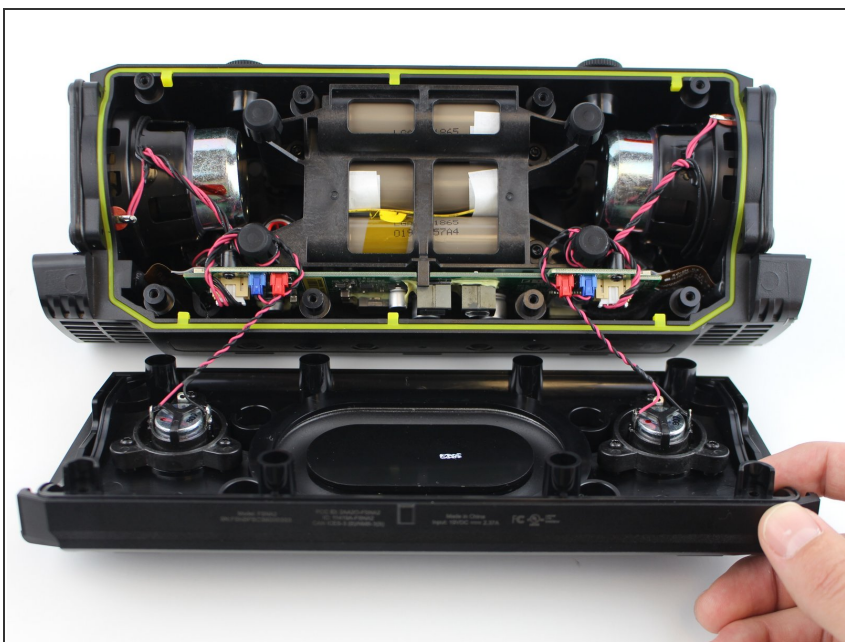
- Pull out the device from the external case.
- Unscrew all 12mm T Head screws using a T10 screwdriver.
- Unscrew all 6mm T Head screws using a T10 screwdriver.

Step 4




- Gently remove the side plates by using your hands to pull off.
 - Use plastic opening tool to pry off the back plate.
- ⓘ Work on the side with the Fugoo trademark.

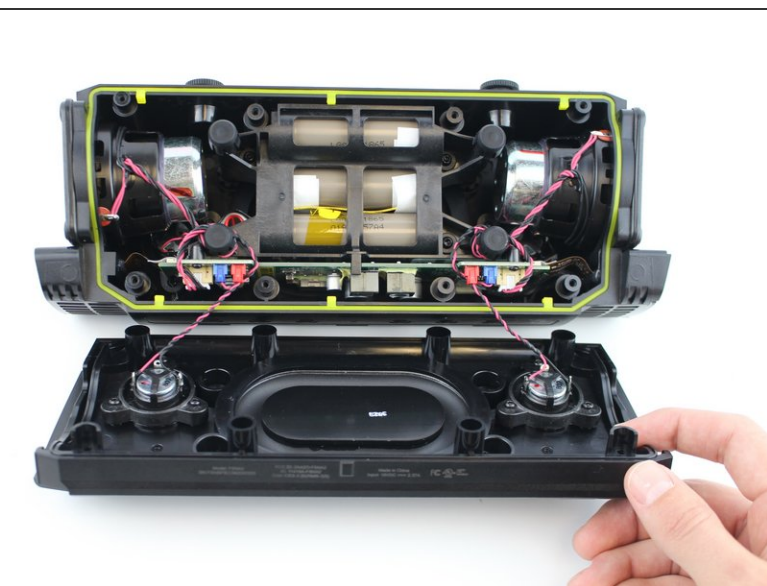
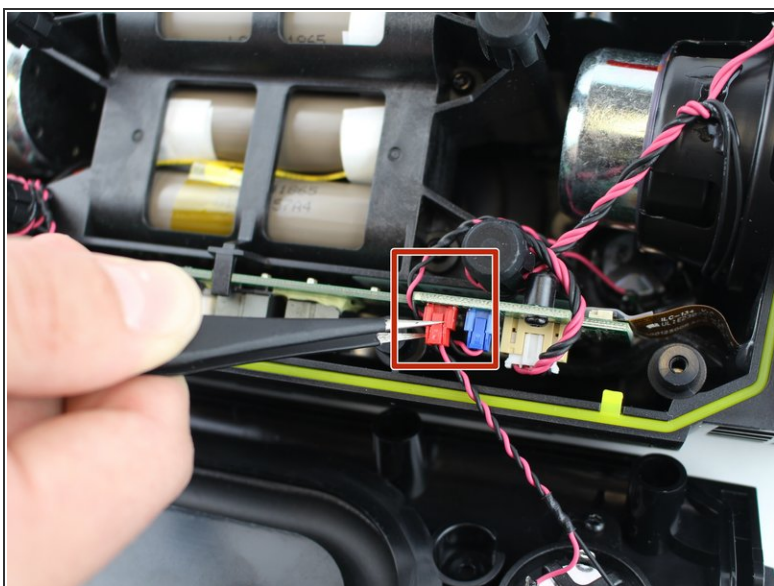
Step 5



- Pull apart the front casing from the back casing, slowly. Try to avoid any tension on any of the connected cables.

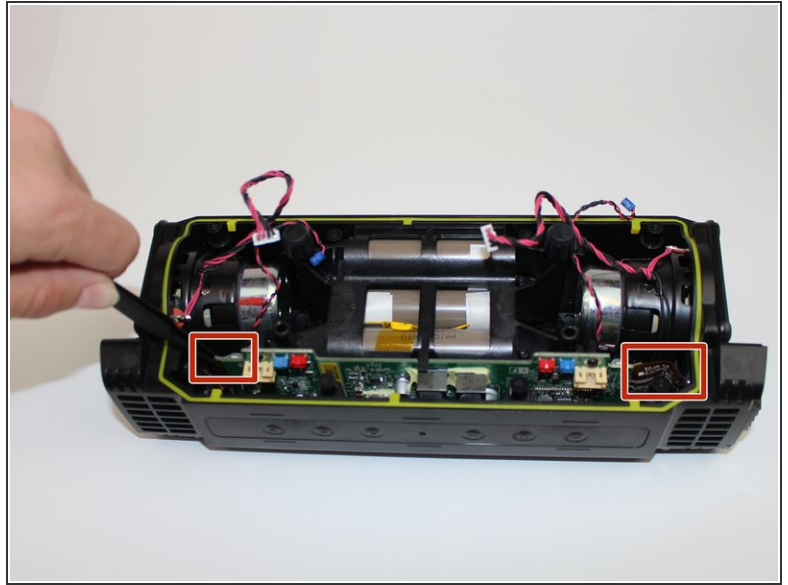
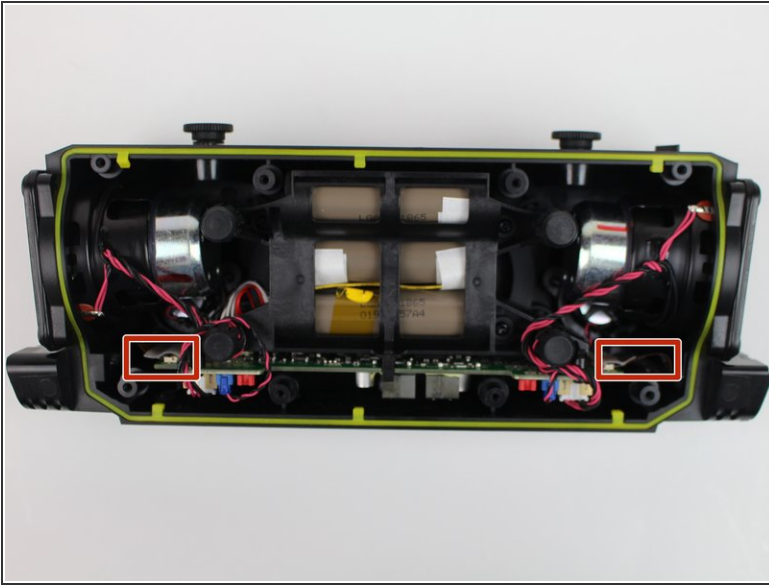
 Separate at a slow constant force to avoid damage to the speaker cables.

Step 6 — Motherboard



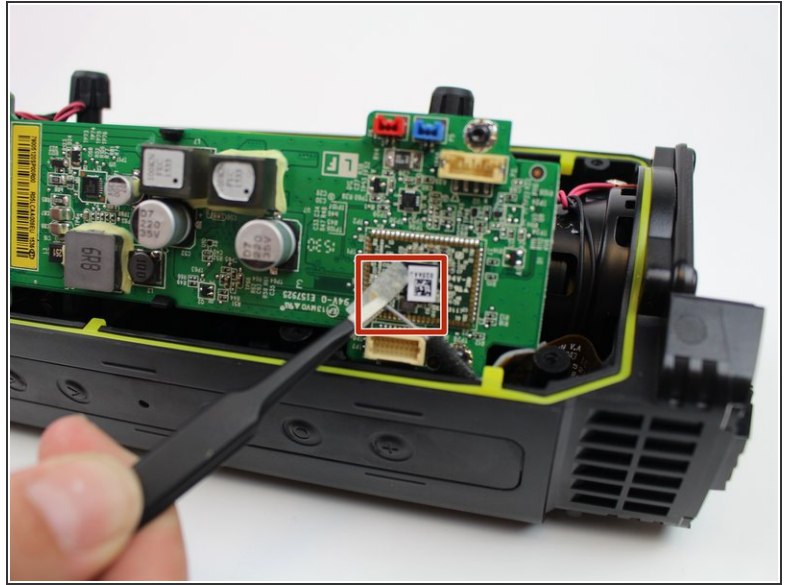
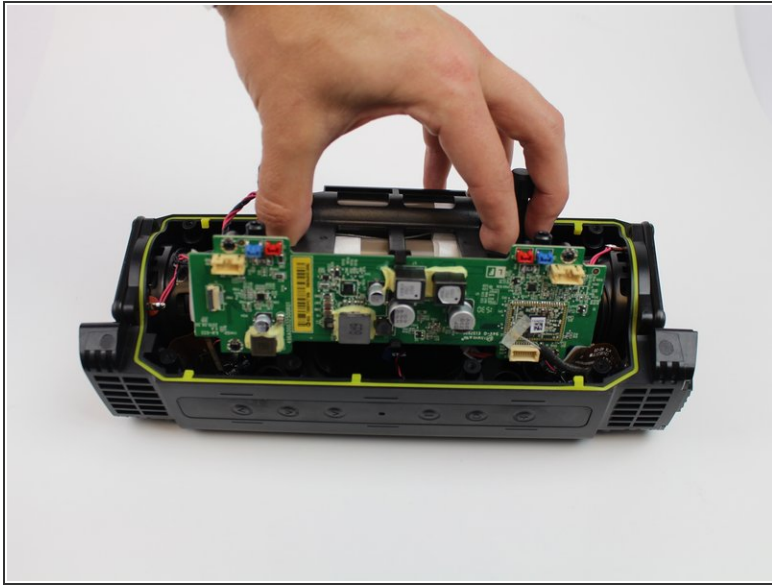
- Carefully untangle the wires that are connected from the speaker to the motherboard.




Step 7



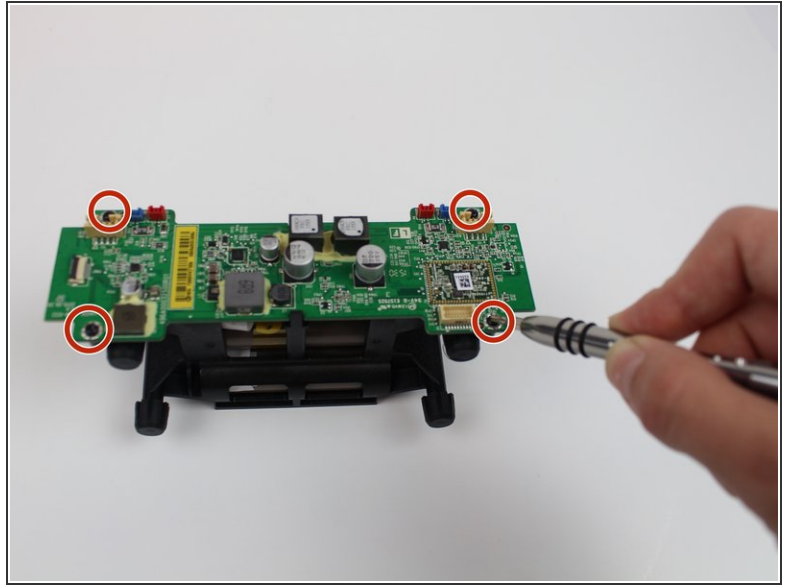
- Use tweezers to remove two ribbon wires on left and right side of motherboard.
- ⚠ Do not pull the cables by the cord, as this could cause damage to the cables and/or motherboard. Always disconnect the cables from the base by the motherboard using an iFixit opening tool

Step 8



-  Pull out the motherboard halfway.
-  Unplug the ribbon gently using a tweezer.
-  There is a hidden ribbon on the motherboard, which becomes visible when the motherboard is been pulled out.

Step 9



- Remove the motherboard and battery from the device.
- Use a #3 Hex screwdriver to unscrew all four 3mm screws."

To reassemble your device, follow these instructions in reverse order.