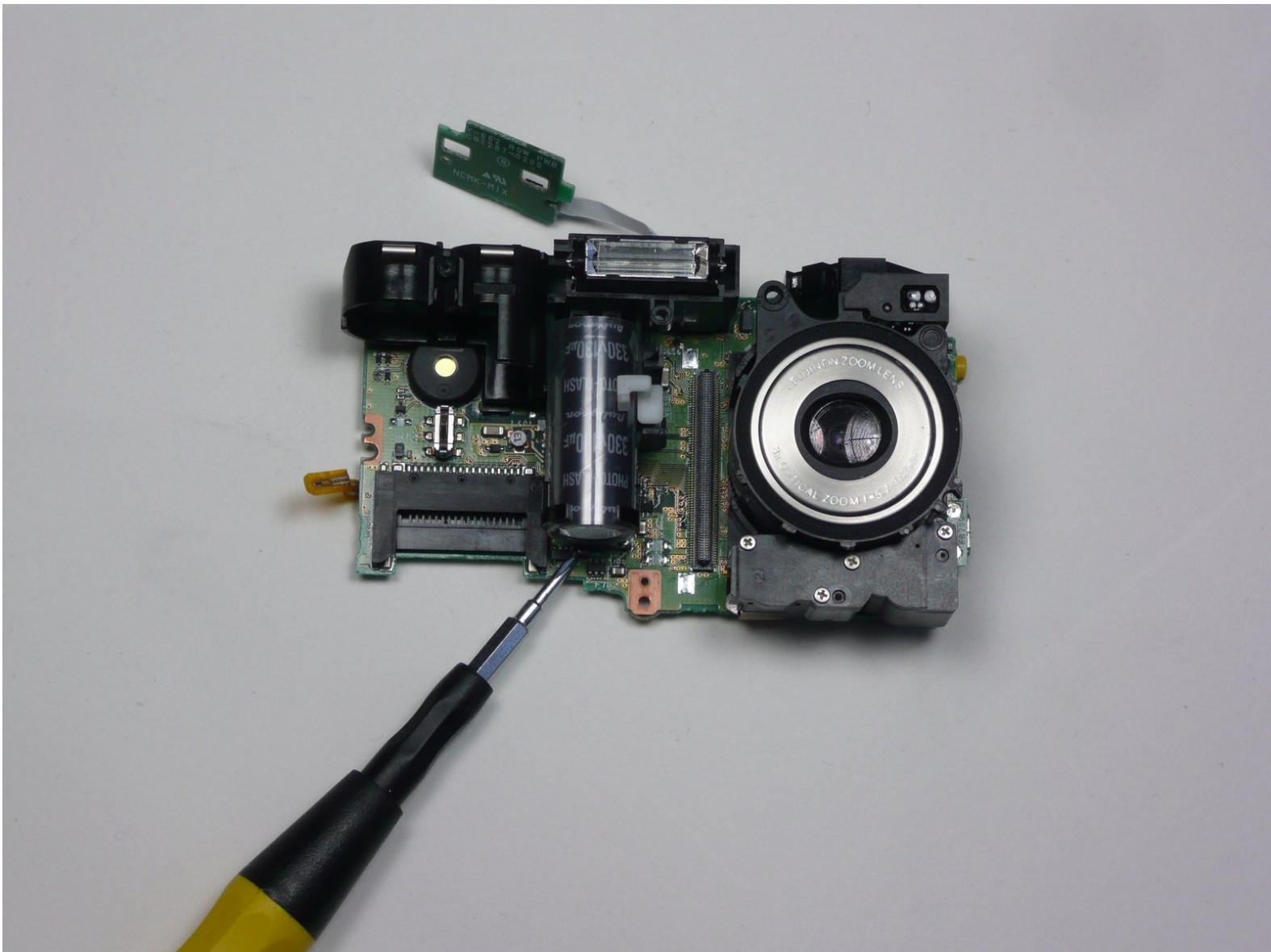




FujiFilm FinePix A340 Flash Unit Replacement

Remove and replace the flash unit.

Written By: Cody





TOOLS:

- [Tri-point Y0 Screwdriver](#) (1)
- [Phillips #0 Screwdriver](#) (1)
- [Spudger](#) (1)

Step 1 — Outer Case



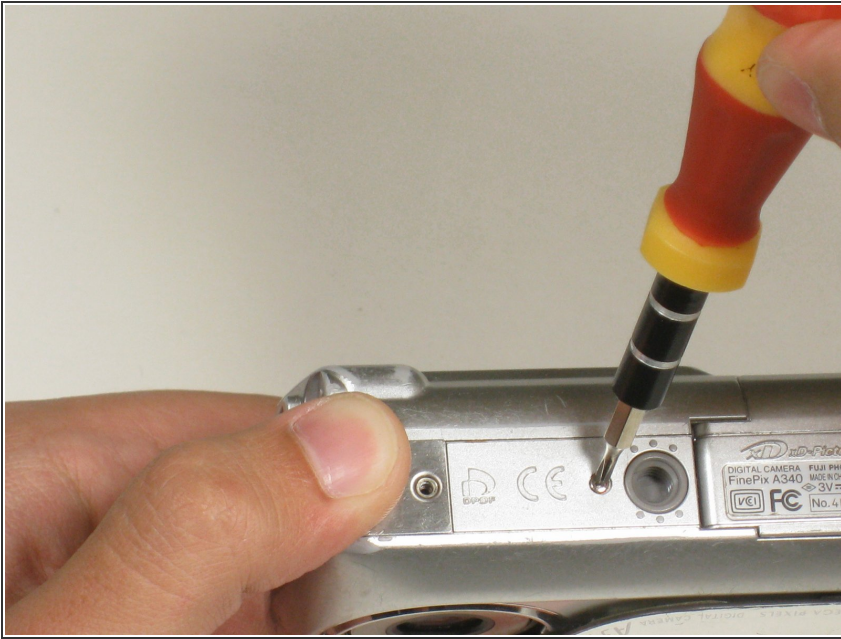
- Remove the batteries from the camera to prevent danger of electric shock.

Step 2



- Locate all five screws on the camera. Then proceed to remove all the screws.

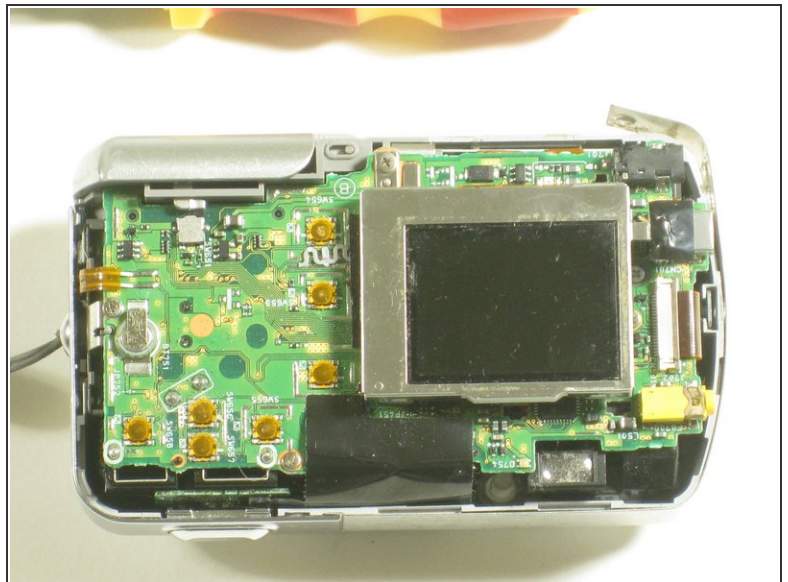
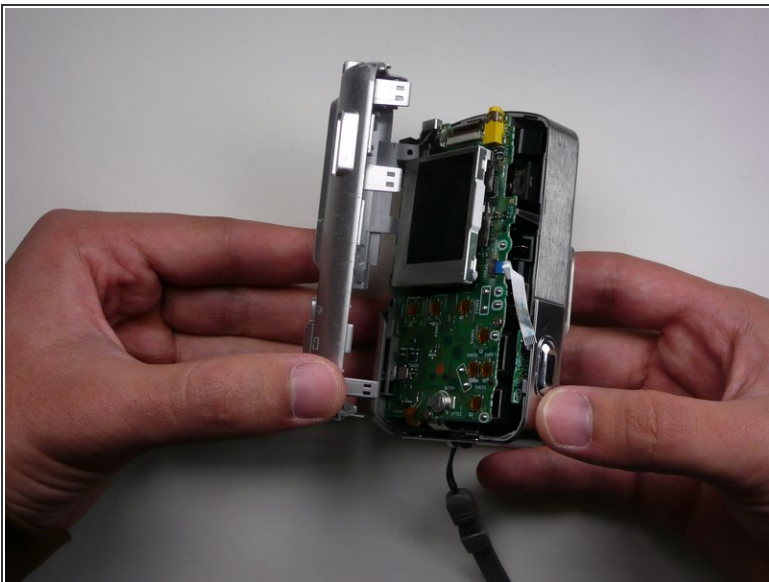
Step 3



⚠ Beware, if your screwdriver does not fit properly, you may damage the screws' heads.

- If your screwdriver does not fit, or you do not have the proper one, you can use a hot glue gun to fix the screwdriver to the head of the screw. Wait for it to harden slightly, and then try to remove the screws.

Step 4



- Remove outer case. Pull the back away from the main body of the camera.

Step 5 — LCD Screen



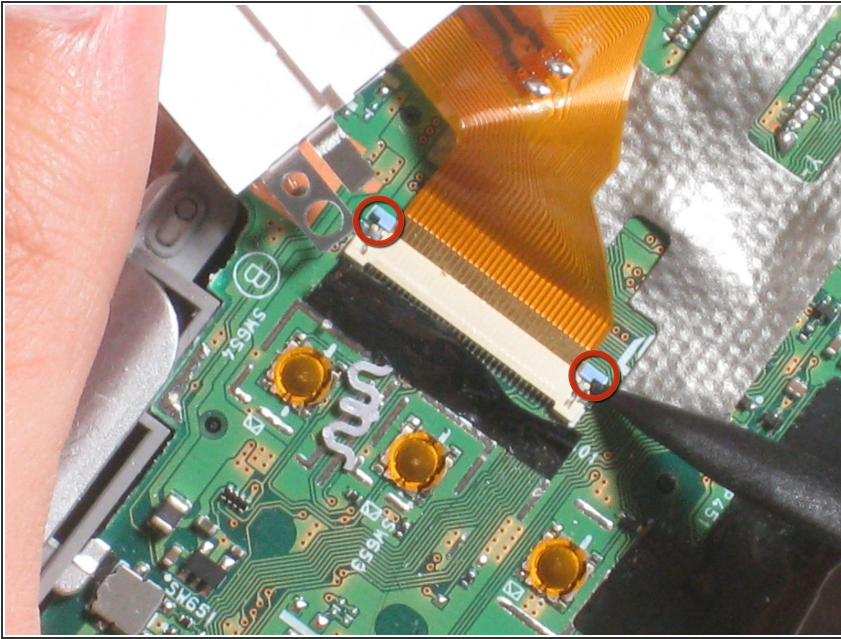
- Locate the LCD screen and anchoring screw.
- Remove screw.

Step 6



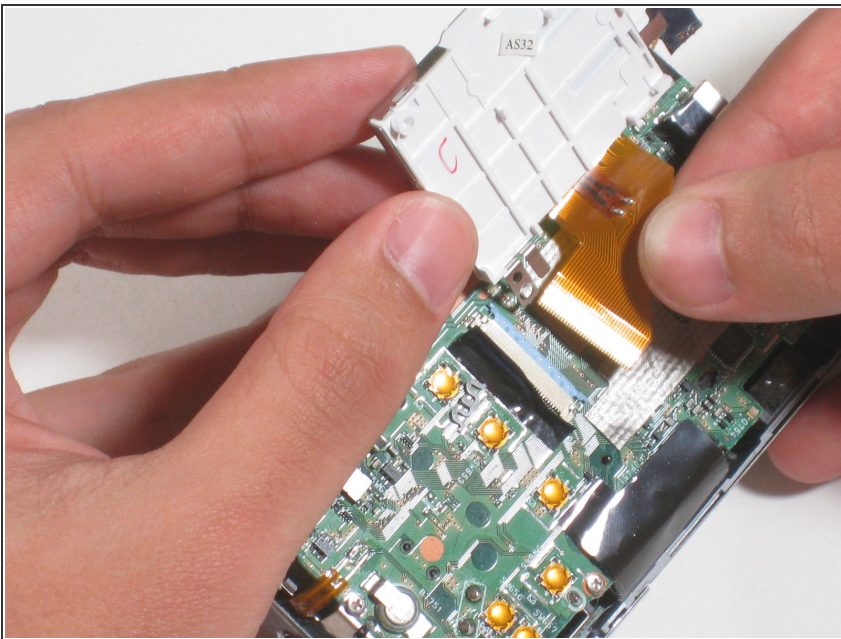
- Carefully pull the LCD screen away from the board it is connected to.

Step 7



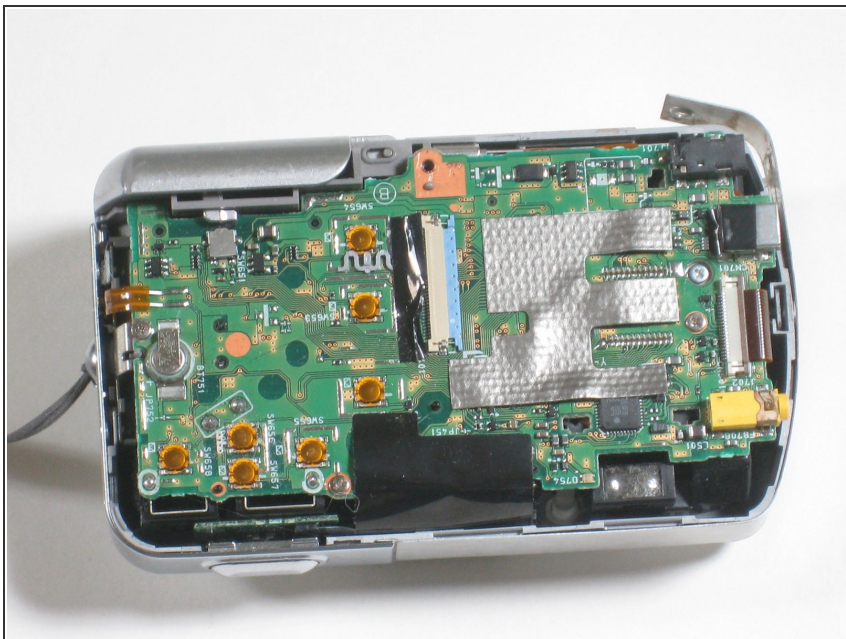
- Push both blue switches away from the holding device to unleach lcd ribbon.
- ⚠ Be careful when removing ribbon. If you damage it, you will need to replace it as well.

Step 8



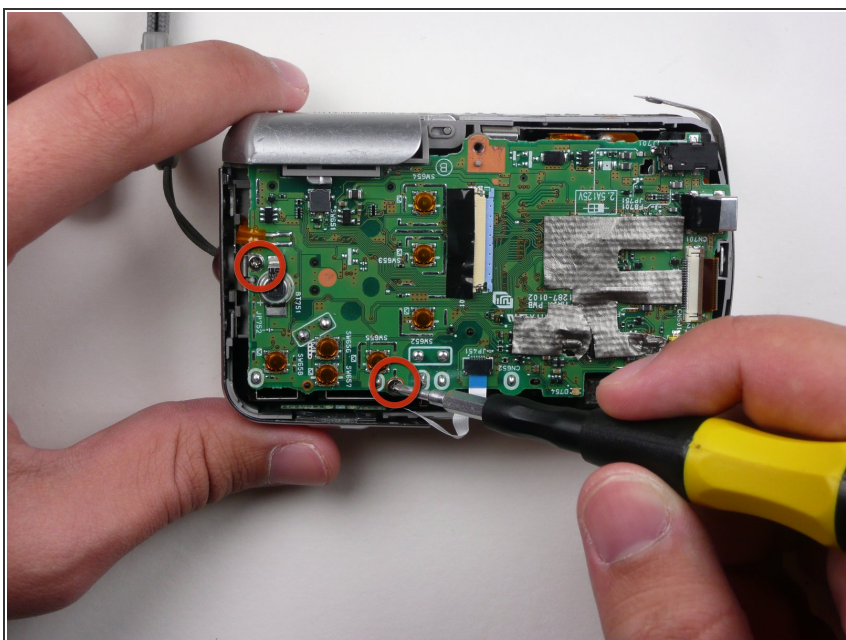
- Carefully detach the ribbon from where it was connected by the blue pins.

Step 9



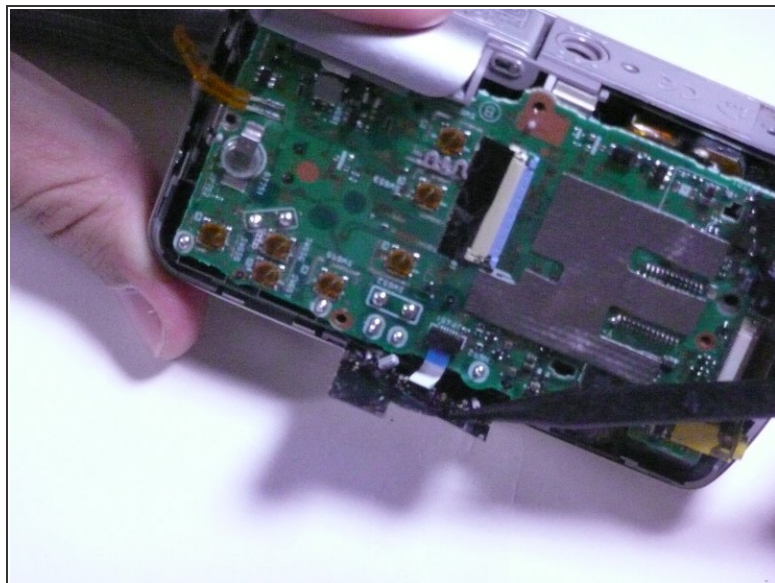
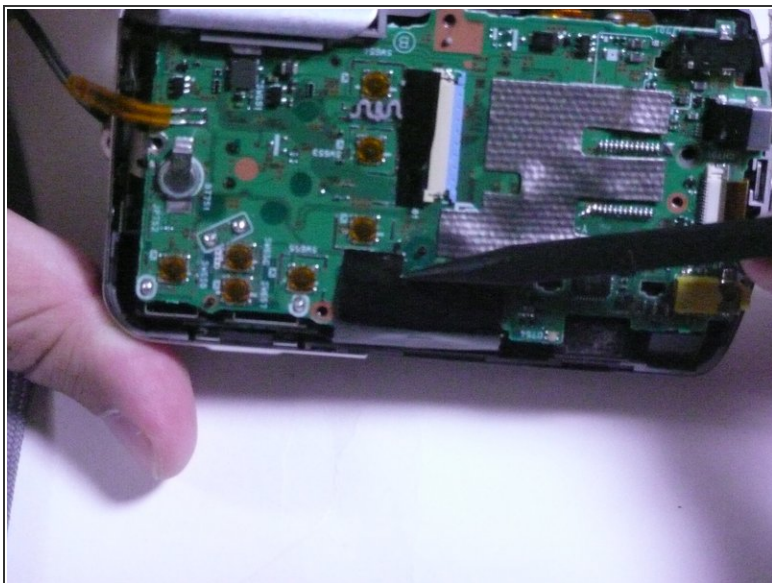
- Now that everything has been disconnected from the board, remove LCD screen.

Step 10 — Motherboard



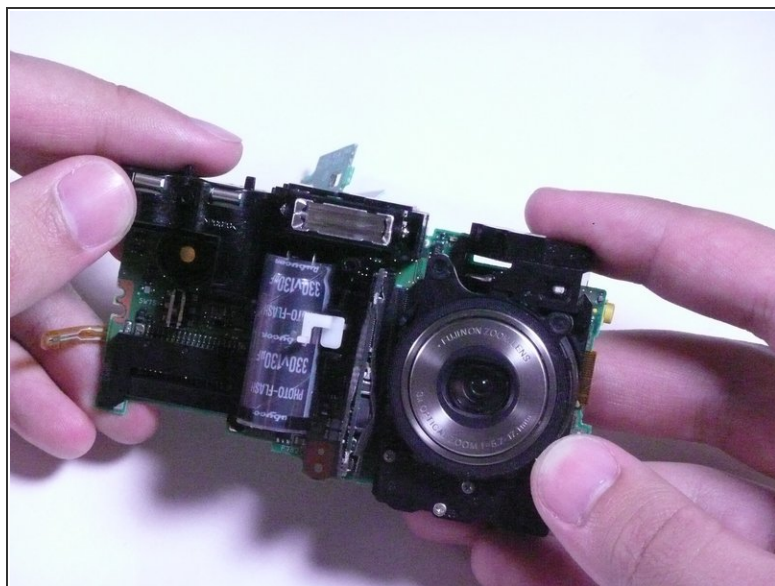
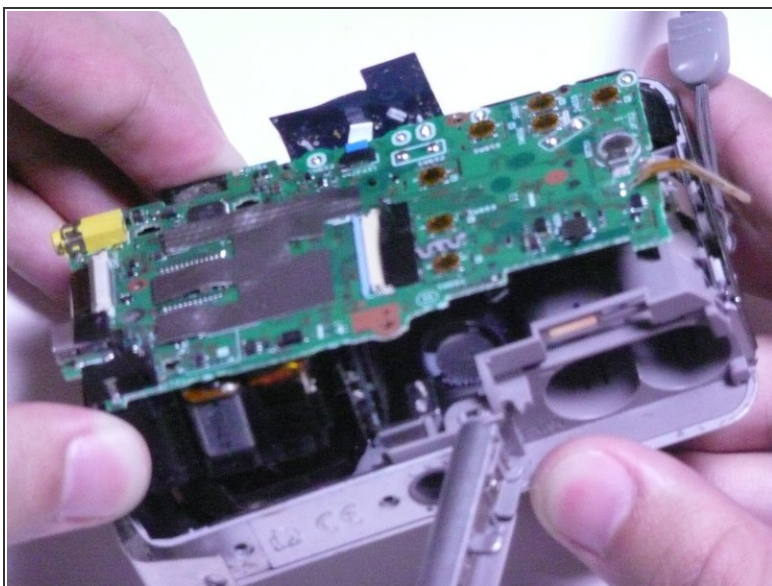
- Remove the two screws holding the circuit board down.

Step 11



- Remove black sticky tape from circuit board and camera case.

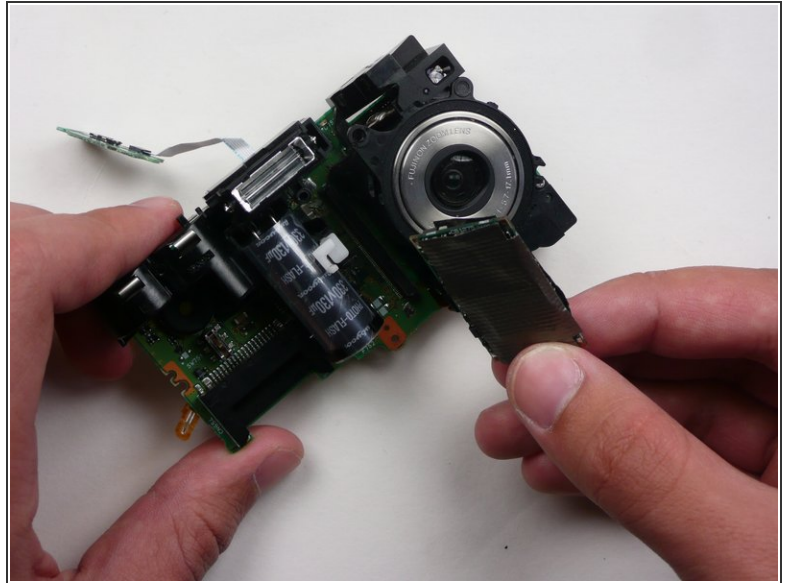
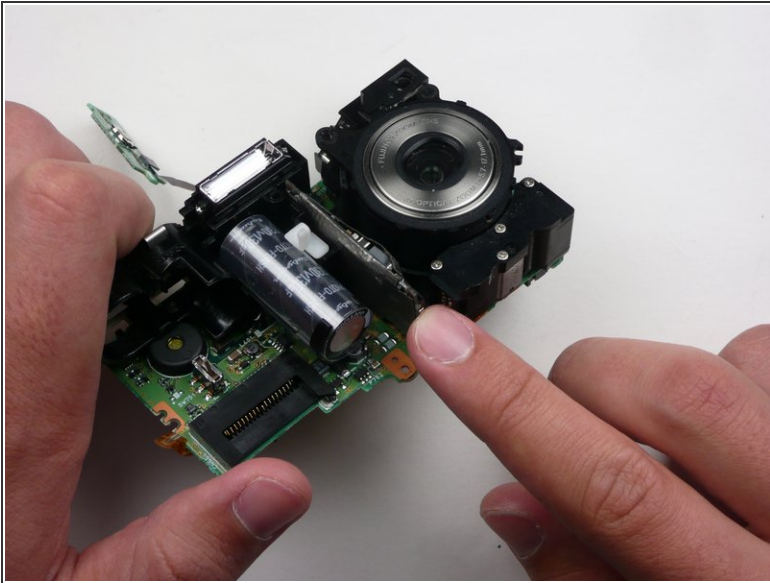
Step 12



- Gently pull the circuit board away from the front side of the camera.

⚠ Be careful when removing assembly as to not break any solder leads or damage lens assembly.

Step 13



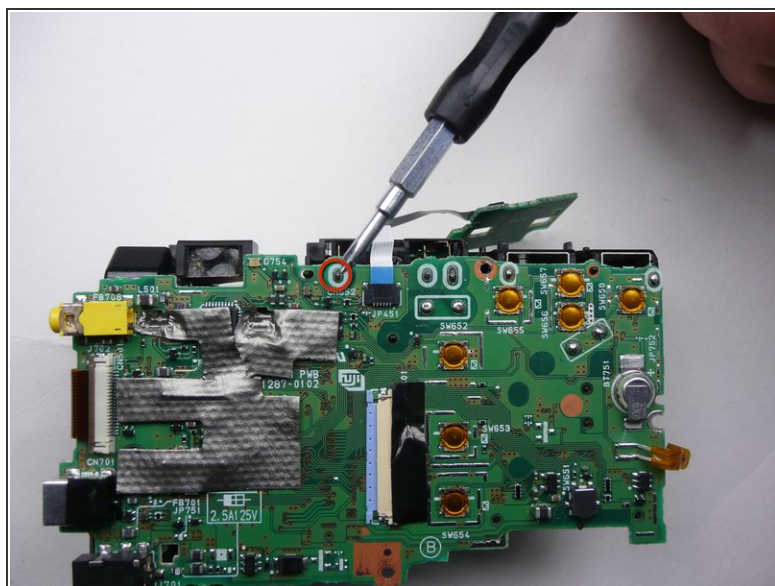
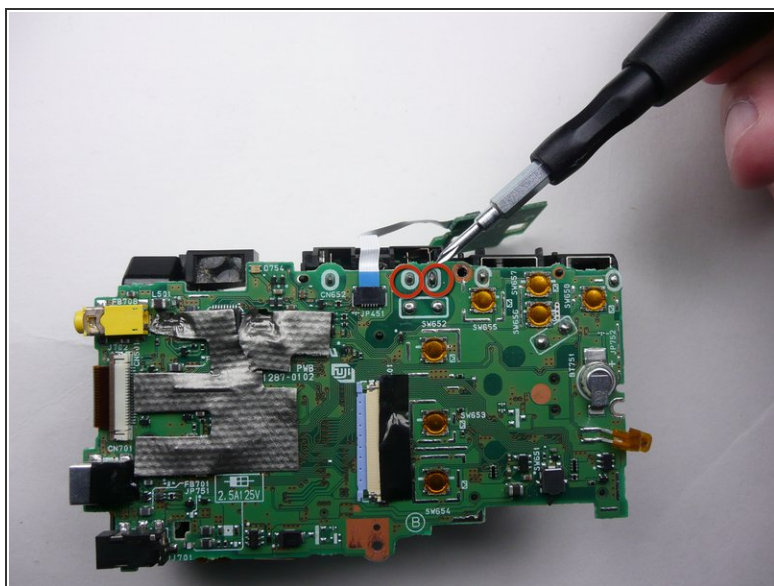
- Remove the logic board by pulling straight away from assembly.

Step 14 — Flash Unit



- Locate the flash unit of the camera. It includes the camera's flash and a capacitor.

Step 15



- Unsolder the flash unit at it's three points.

⚠ Be careful not to damage the circuit board or surrounding parts with the solder iron.

To reassemble your device, follow these instructions in reverse order.