



FujiFilm FinePix S5100 Battery Compartment Replacement

How to replace a FujiFilm FinePix S5100 battery compartment.

Written By: Kristen Gismondi





TOOLS:

- [Phillips #000 Screwdriver](#) (1)
-

Step 1 — Battery



- ⚠ Ensure your camera is in the off position.
- Orient the camera upside down with the lens facing to the left and the battery compartment facing directly toward you.

Step 2



- Open the battery door by pushing down and in the direction of the arrow on the door.

Step 3



- Remove four AA batteries from the camera.

Step 4 — Back Cover



- Turn the camera around so the screen is facing you and the camera lens is facing away from you.

Step 5



- Remove two 0.9mm Phillips #000 screws from the right side of the camera.
- Remove one 0.6mm Phillips #000 screw from the left side of the camera.
- Remove two 0.6mm Phillips #000 screws from the bottom side of the camera.

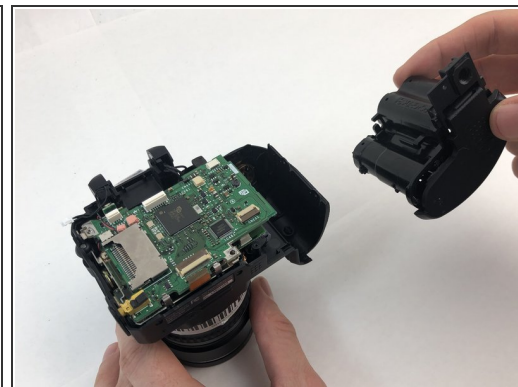
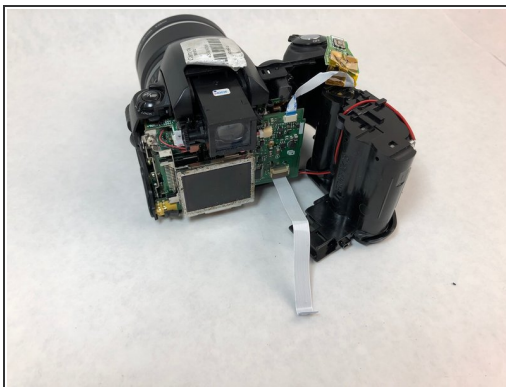
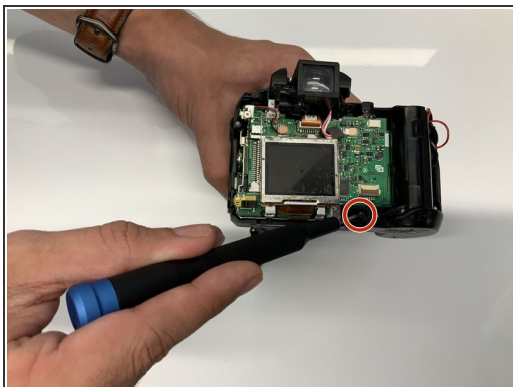
☑ When replacing the back cover on the camera, there will be an audible click which ensures the cover has completely seated with the rest of the camera.

Step 6



- Carefully pull the back cover and separate it from the rest of the camera body.
- Carefully flip up the top of the tan colored tab to disconnect the ribbon cable and completely remove the back cover.

Step 7 — Battery Compartment



- Remove the single 1.3mm Phillips #000 screw.
- Carefully remove the battery compartment from the rest of the camera.

To reassemble your device, follow these instructions in reverse order.