



FujiFilm FinePix S5100 Battery Door Replacement

The replacement guide will show you how to replace the battery door on a Fujifilm S5100 camera.

Written By: Christopher Coviello



INTRODUCTION

The replacement guide will show you how to access the battery door on a Fujifilm FinePix S5100 camera. In order to access the door, you will need to disconnect circuit board connections. These connections are very fragile so handle these components with care. If you follow these steps and are careful while taking apart the camera, everything will go smoothly and quickly. It is also recommended to use a magnetic pad to place the screws on in conjunction with the magnetic tools mentioned above. This is to prevent or minimize the chances of losing or misplacing a screw.

TOOLS:

- [Phillips #000 Screwdriver](#) (1)
 - [ESD Safe Tweezers Blunt Nose](#) (1)
-

Step 1 — Battery



- ⚠ Ensure your camera is in the off position.
- Orient the camera upside down with the lens facing to the left and the battery compartment facing directly toward you.

Step 2



- Open the battery door by pushing down and in the direction of the arrow on the door.

Step 3



- Remove four AA batteries from the camera.

Step 4 — Back Cover




- Turn the camera around so the screen is facing you and the camera lens is facing away from you.

Step 5



- Remove two 0.9mm Phillips #000 screws from the right side of the camera.
- Remove one 0.6mm Phillips #000 screw from the left side of the camera.
- Remove two 0.6mm Phillips #000 screws from the bottom side of the camera.

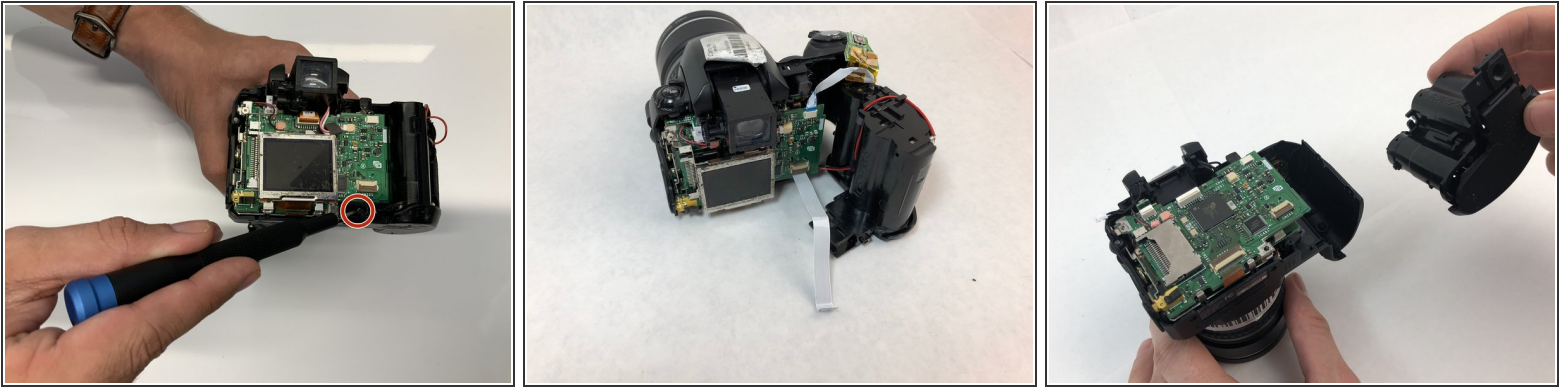
 When replacing the back cover on the camera, there will be an audible click which ensures the cover has completely seated with the rest of the camera.

Step 6



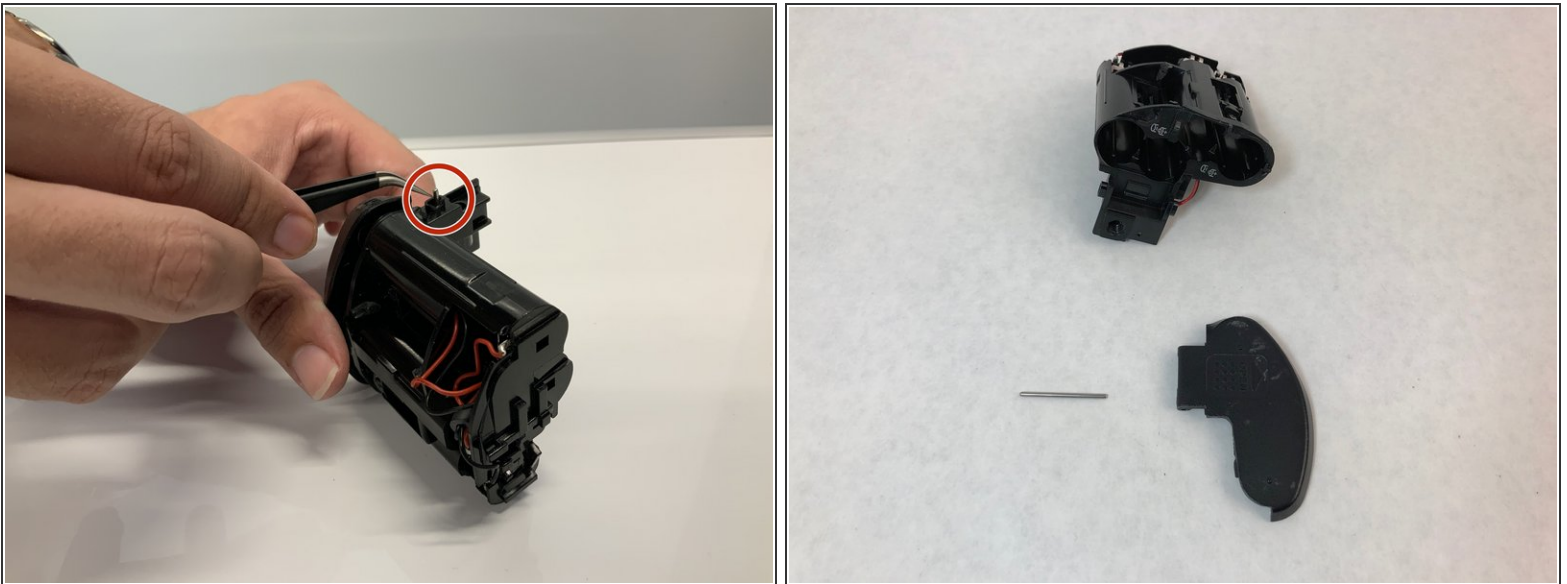
- Carefully pull the back cover and separate it from the rest of the camera body.
- Carefully flip up the top of the tan colored tab to disconnect the ribbon cable and completely remove the back cover.

Step 7 — Battery Compartment



- Remove the single 1.3mm Phillips #000 screw.
- Carefully remove the battery compartment from the rest of the camera.

Step 8 — Battery Door



- Use a pair of tweezers to carefully pull the 4.4mm rod out of the battery compartment.
- Once the rod is out, the door can easily be removed.

To reassemble your device, follow these instructions in reverse order.