



FujiFilm FinePix S5100 Battery Lead Terminals Replacement

The replacement guide will show you how to replace the battery lead terminals on a Fujifilm Finepix S5100 camera.

Written By: Evans



INTRODUCTION

This replacement guide will show you how to access the battery terminal leads on a Fujifilm FinePix S5100 camera. It is recommended to use a magnetic pad to place the screws on in conjunction with the magnetic tools mentioned above. This is to prevent or minimize the chances of losing or misplacing a screw. Be mindful of this with regards to safe handling of the electrical components. This guide is fairly simple and does not require a large amount of time.



TOOLS:

- [Phillips #000 Screwdriver](#) (1)
-

Step 1 — Battery



- ⚠ Ensure your camera is in the off position.
- Orient the camera upside down with the lens facing to the left and the battery compartment facing directly toward you.

Step 2



- Open the battery door by pushing down and in the direction of the arrow on the door.

Step 3



- Remove four AA batteries from the camera.

Step 4 — Back Cover



- Turn the camera around so the screen is facing you and the camera lens is facing away from you.

Step 5



- Remove two 0.9mm Phillips #000 screws from the right side of the camera.
- Remove one 0.6mm Phillips #000 screw from the left side of the camera.
- Remove two 0.6mm Phillips #000 screws from the bottom side of the camera.

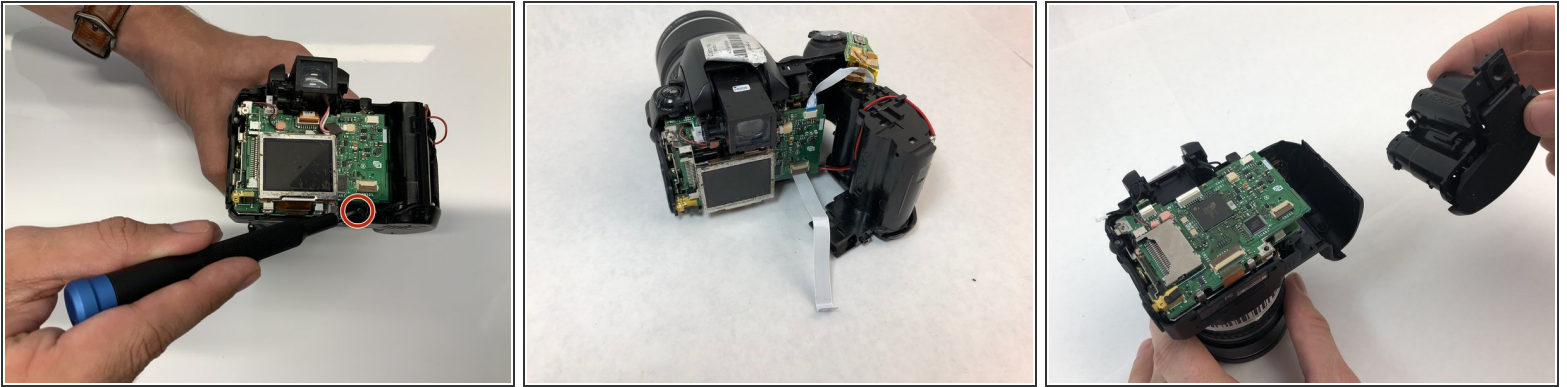
☑ When replacing the back cover on the camera, there will be an audible click which ensures the cover has completely seated with the rest of the camera.

Step 6



- Carefully pull the back cover and separate it from the rest of the camera body.
- Carefully flip up the top of the tan colored tab to disconnect the ribbon cable and completely remove the back cover.

Step 7 — Battery Compartment



- Remove the single 1.3mm Phillips #000 screw.
- Carefully remove the battery compartment from the rest of the camera.

Step 8 — Battery Lead Terminals



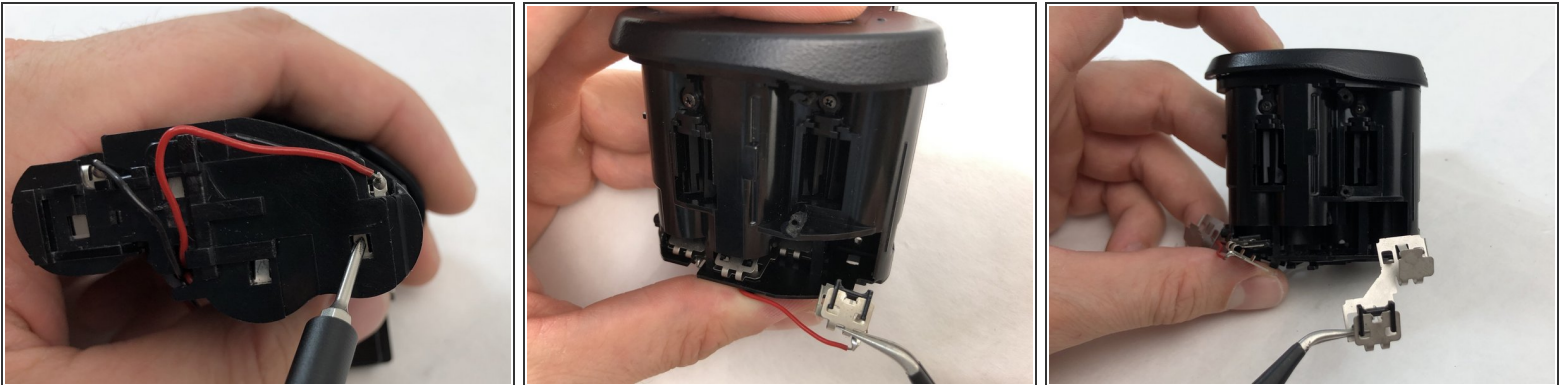
- Remove two 0.6mm Phillips #000 screws from the metal battery terminal lead.

Step 9



- Using a pair of tweezers, remove the two back panel pieces from the battery terminal leads found inside of the battery compartment door.

Step 10



- Using a pair of tweezers, remove one (+)positive and one (-)negative battery terminal leads from the battery compartment.

To reassemble your device, follow these instructions in reverse order.