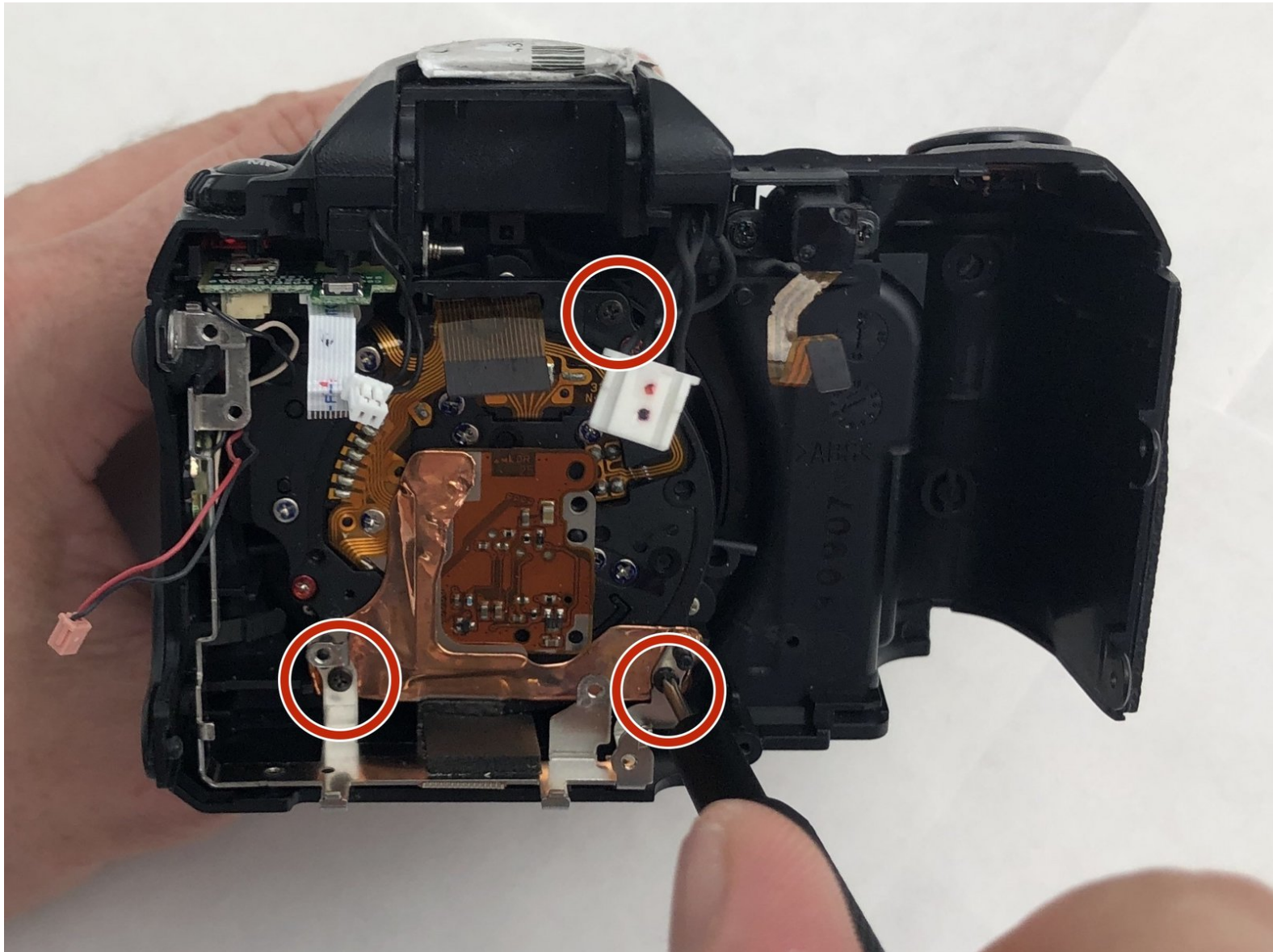




FujiFilm FinePix S5100 Lens Compartment Replacement

How to replace a FujiFilm FinePix S5100 lens compartment.

Written By: Kristen Gismondi





TOOLS:

- [Phillips #000 Screwdriver](#) (1)
-

Step 1 — Battery



- ⚠ Ensure your camera is in the off position.
- Orient the camera upside down with the lens facing to the left and the battery compartment facing directly toward you.

Step 2



- Open the battery door by pushing down and in the direction of the arrow on the door.

Step 3



- Remove four AA batteries from the camera.

Step 4 — Back Cover



- Turn the camera around so the screen is facing you and the camera lens is facing away from you.

Step 5



- Remove two 0.9mm Phillips #000 screws from the right side of the camera.
- Remove one 0.6mm Phillips #000 screw from the left side of the camera.
- Remove two 0.6mm Phillips #000 screws from the bottom side of the camera.

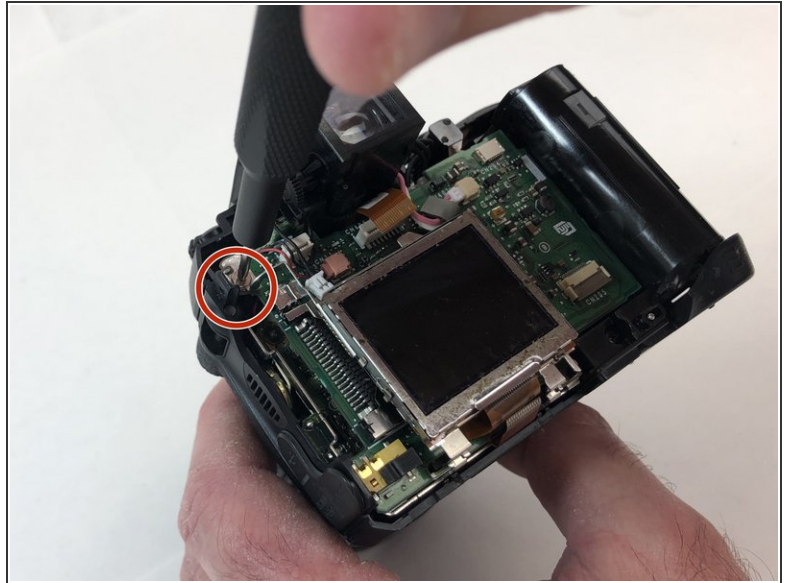
☑ When replacing the back cover on the camera, there will be an audible click which ensures the cover has completely seated with the rest of the camera.

Step 6



- Carefully pull the back cover and separate it from the rest of the camera body.
- Carefully flip up the top of the tan colored tab to disconnect the ribbon cable and completely remove the back cover.

Step 7 — LCD Screen



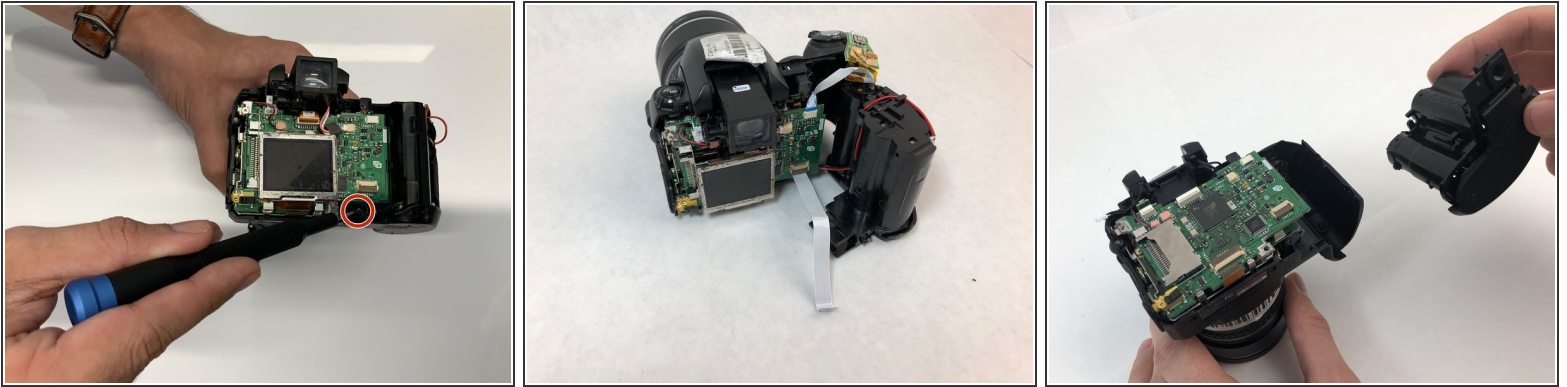
- Remove the two 1.3mm Phillips #000 screws from the LCD frame.

Step 8



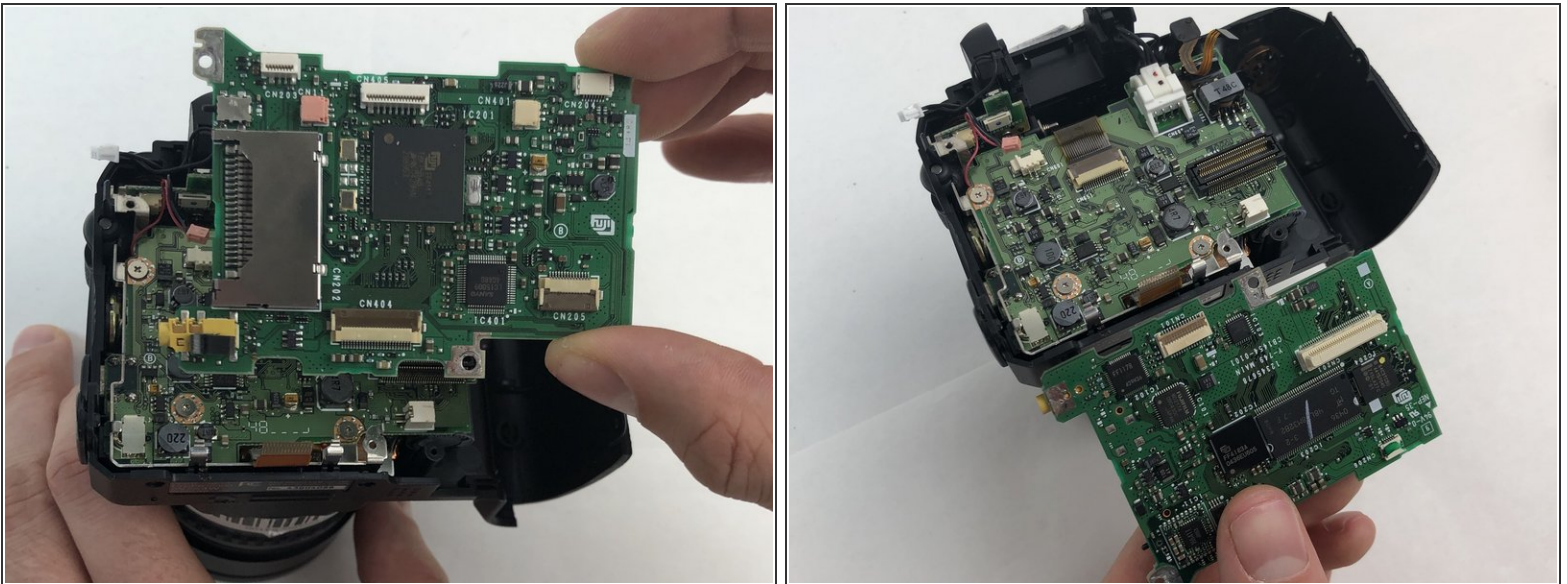
- Carefully using your hand, grab the LCD screen and pull upward and away from the motherboard.
- Carefully using your hand, remove the tan digital tape by disconnecting it from the receiving port.
- Remove the entire LCD screen from the motherboard.

Step 9 — Battery Compartment



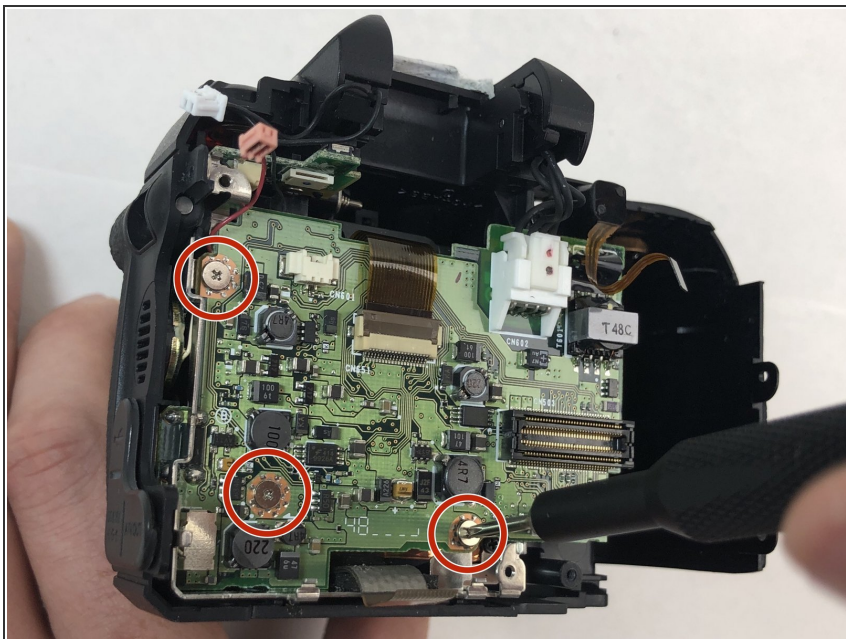
- Remove the single 1.3mm Phillips #000 screw.
- Carefully remove the battery compartment from the rest of the camera.

Step 10 — Motherboard



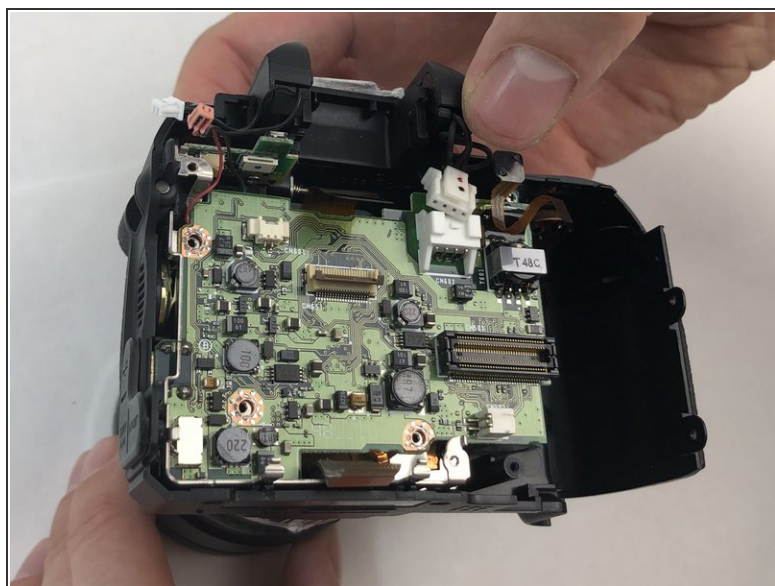
- Carefully grab and remove the upper level motherboard from the camera.

Step 11



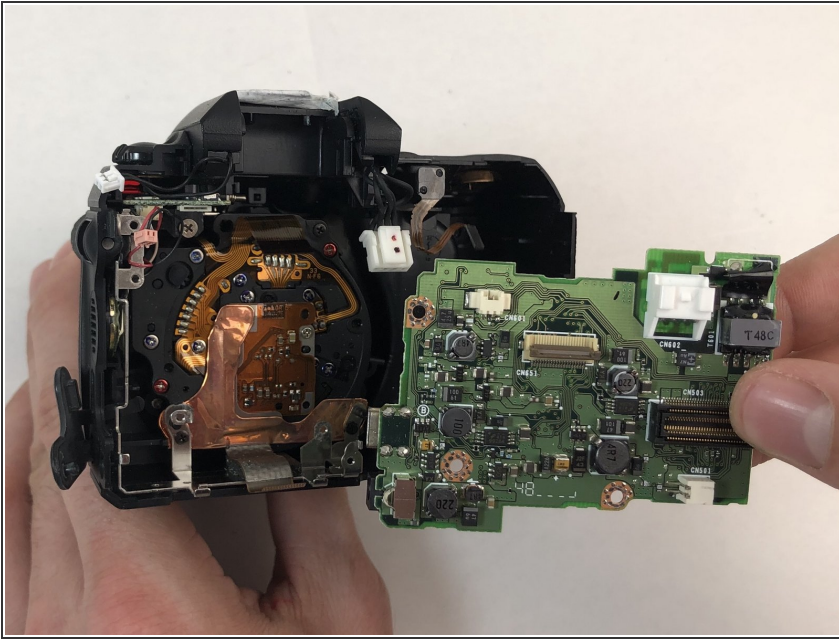
- Remove three 0.8mm Phillips #000 screws from the motherboard.

Step 12



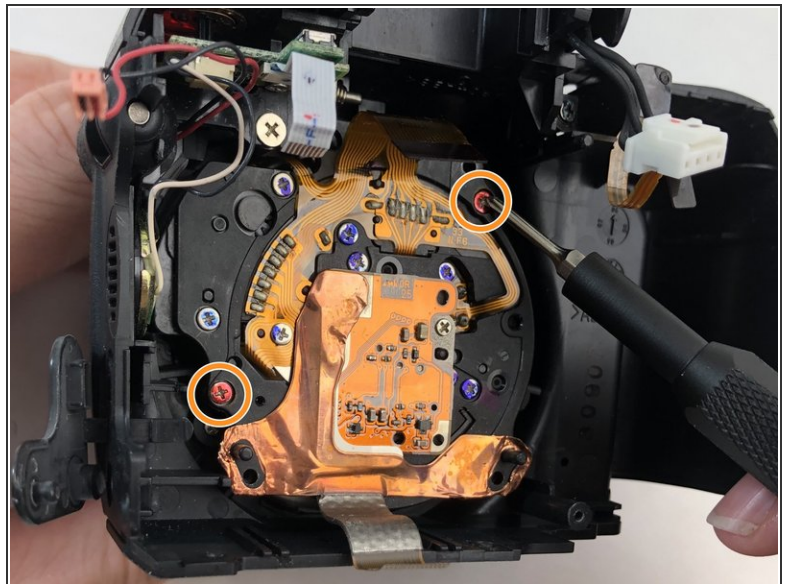
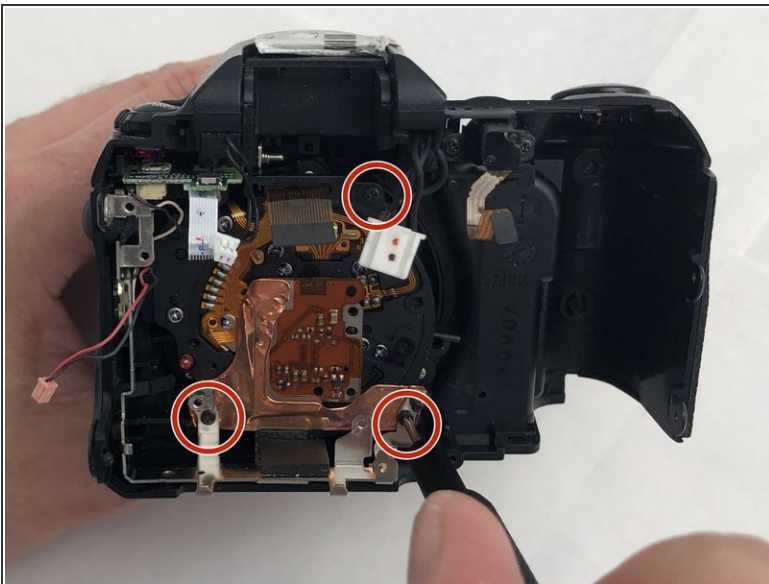
- Carefully remove the tan digital tape from the receiving port.

Step 13



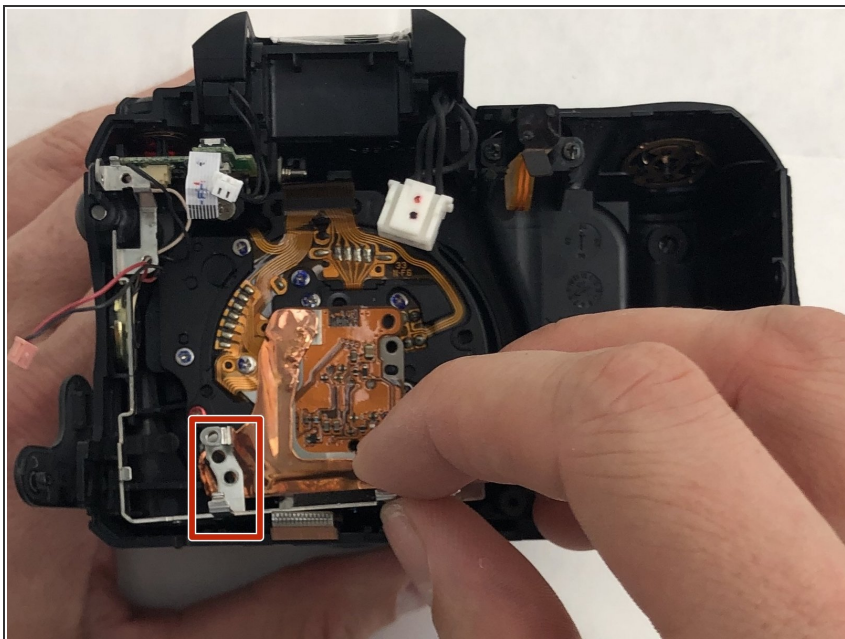
- Carefully remove the lower level motherboard from the camera and set aside.

Step 14 — Lens Compartment



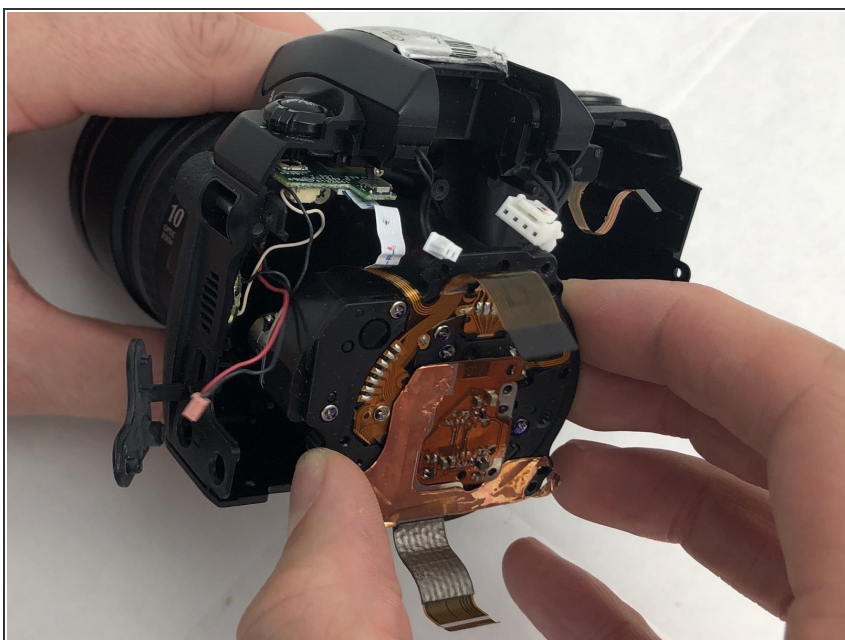
- Remove three 1.0mm Phillips #000 black screws from the back of the lens compartment.
- Remove two 0.4mm Phillips #000 red screws from the back of the lens compartment.

Step 15



- Carefully grab the metal brace and push upward to lift the metal brace off of the hook.

Step 16



- Carefully remove the lens compartment from the camera body.

To reassemble your device, follow these instructions in reverse order.