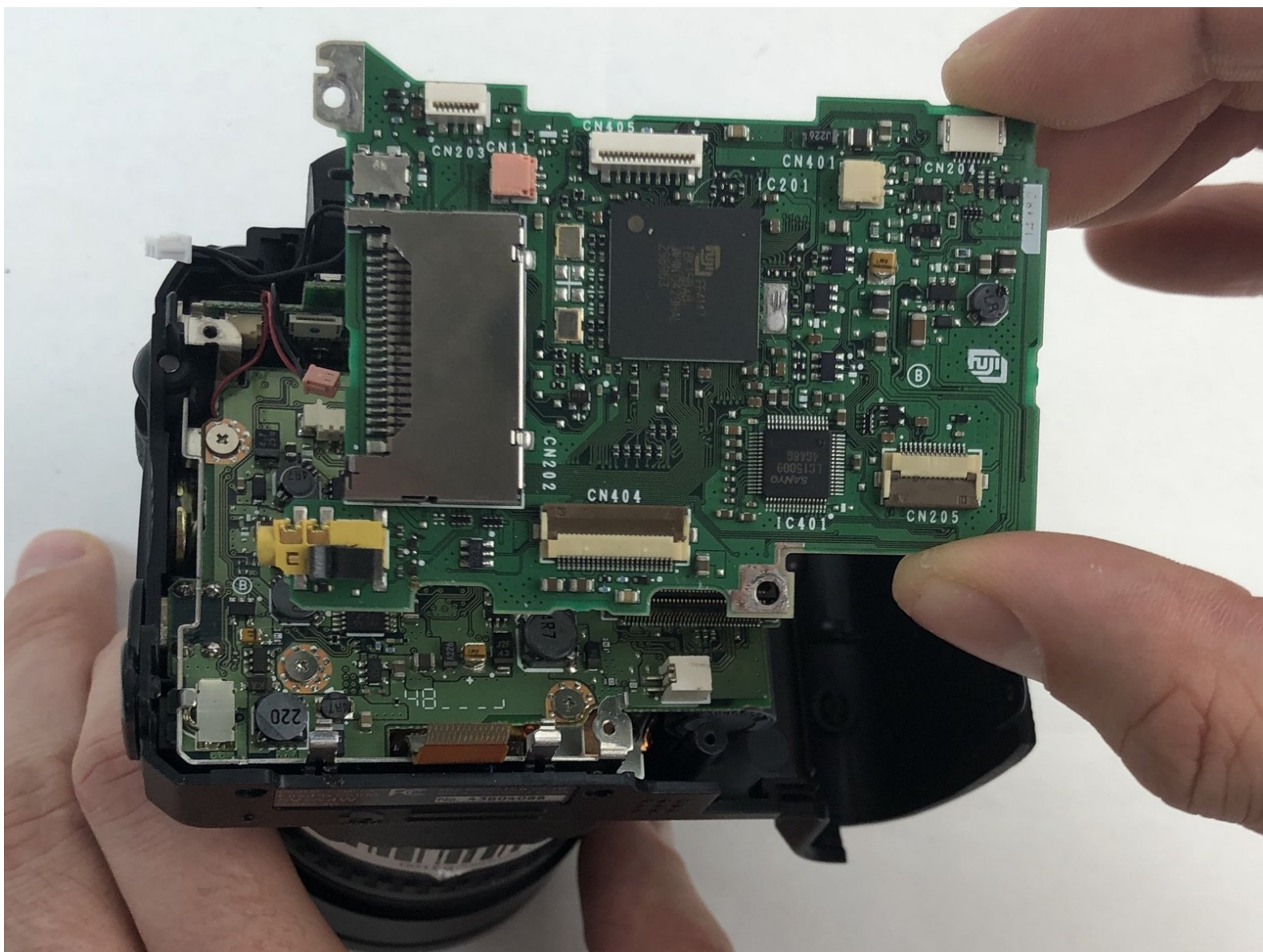




FujiFilm FinePix S5100 Motherboard Replacement

The replacement guide will show you how to replace the motherboards on a Fujifilm Finepix S5100 camera.

Written By: Evans



INTRODUCTION

This replacement guide will show you how to access both the upper and lower level motherboards on a Fujifilm FinePix S5100 camera. It is recommended to use a magnetic pad to place the screws on in conjunction with the magnetic tools mentioned above. This is to prevent or minimize the chances of losing or misplacing a screw. This guide is time consuming, and there will be many parts including delicate components to be removed. Be mindful of this with regards to safe handling of the electrical components. It is recommended to place the bigger components of the camera on a flat stable surface. Place such components away from hazardous materials and liquids (especially magnets) in order to avoid unnecessary damage.



TOOLS:

- [Phillips #000 Screwdriver](#) (1)
-

Step 1 — Battery



- ⚠ Ensure your camera is in the off position.
- Orient the camera upside down with the lens facing to the left and the battery compartment facing directly toward you.

Step 2



- Open the battery door by pushing down and in the direction of the arrow on the door.

Step 3



- Remove four AA batteries from the camera.

Step 4 — Back Cover



- Turn the camera around so the screen is facing you and the camera lens is facing away from you.

Step 5



- Remove two 0.9mm Phillips #000 screws from the right side of the camera.
- Remove one 0.6mm Phillips #000 screw from the left side of the camera.
- Remove two 0.6mm Phillips #000 screws from the bottom side of the camera.

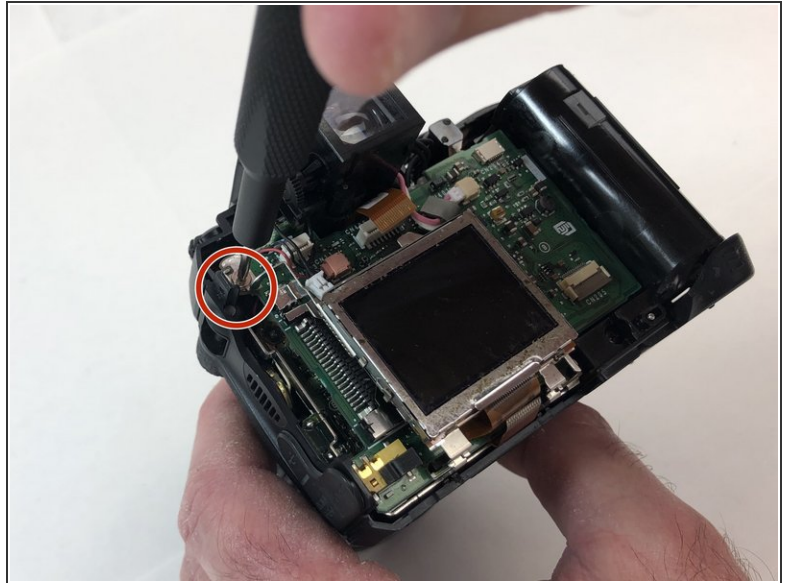
☑ When replacing the back cover on the camera, there will be an audible click which ensures the cover has completely seated with the rest of the camera.

Step 6



- Carefully pull the back cover and separate it from the rest of the camera body.
- Carefully flip up the top of the tan colored tab to disconnect the ribbon cable and completely remove the back cover.

Step 7 — LCD Screen



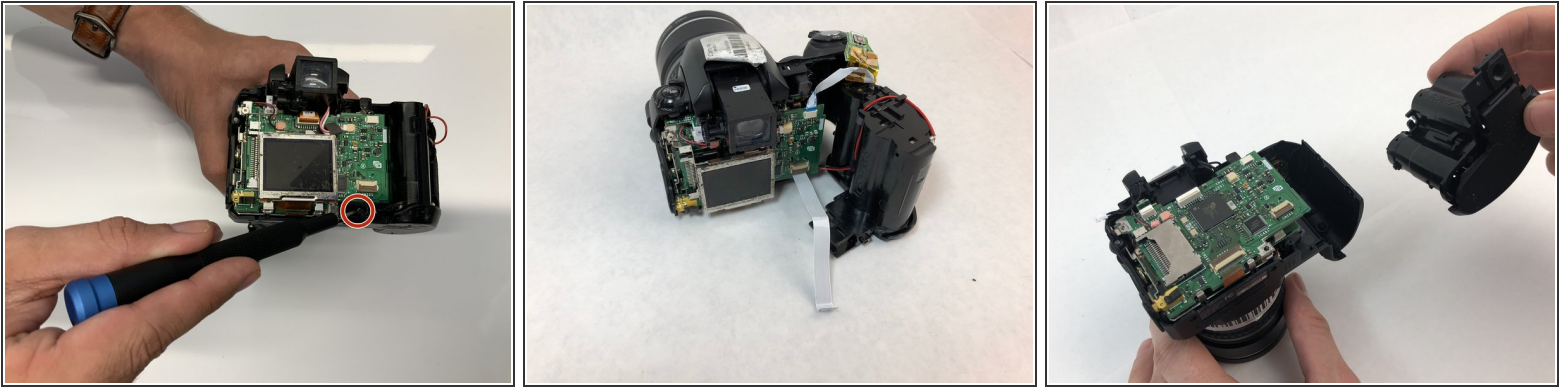
- Remove the two 1.3mm Phillips #000 screws from the LCD frame.

Step 8



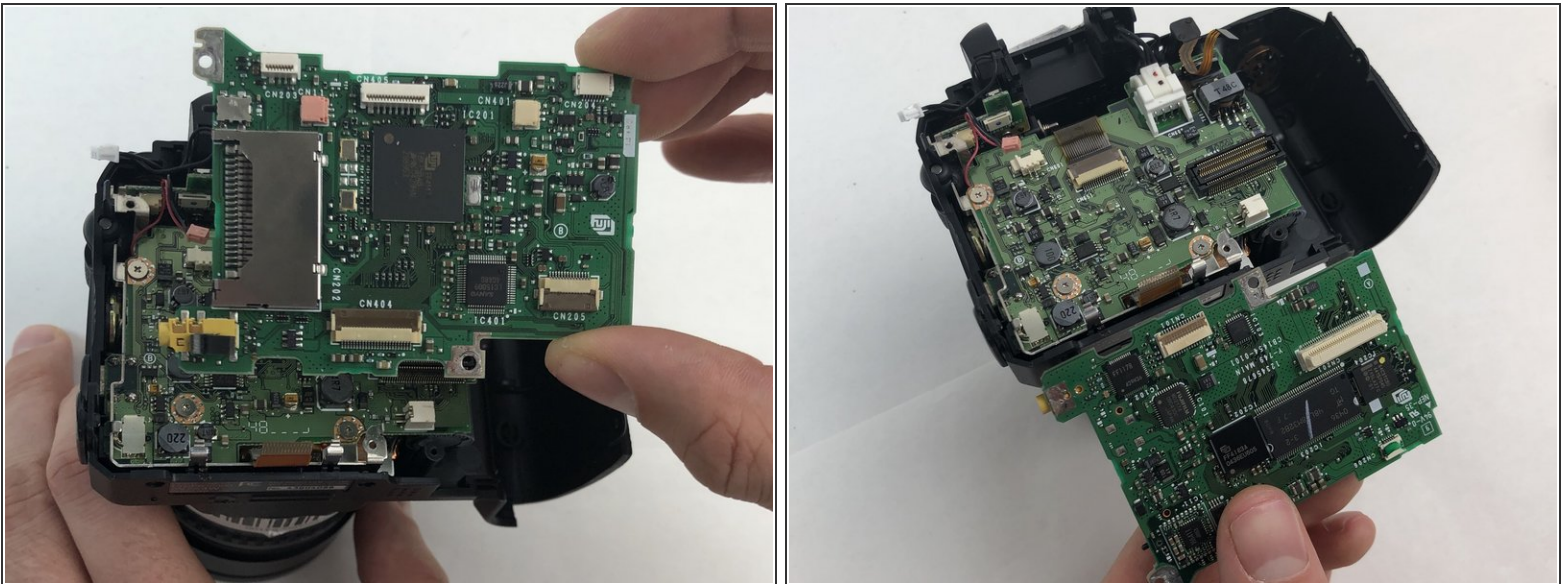
- Carefully using your hand, grab the LCD screen and pull upward and away from the motherboard.
- Carefully using your hand, remove the tan digital tape by disconnecting it from the receiving port.
- Remove the entire LCD screen from the motherboard.

Step 9 — Battery Compartment



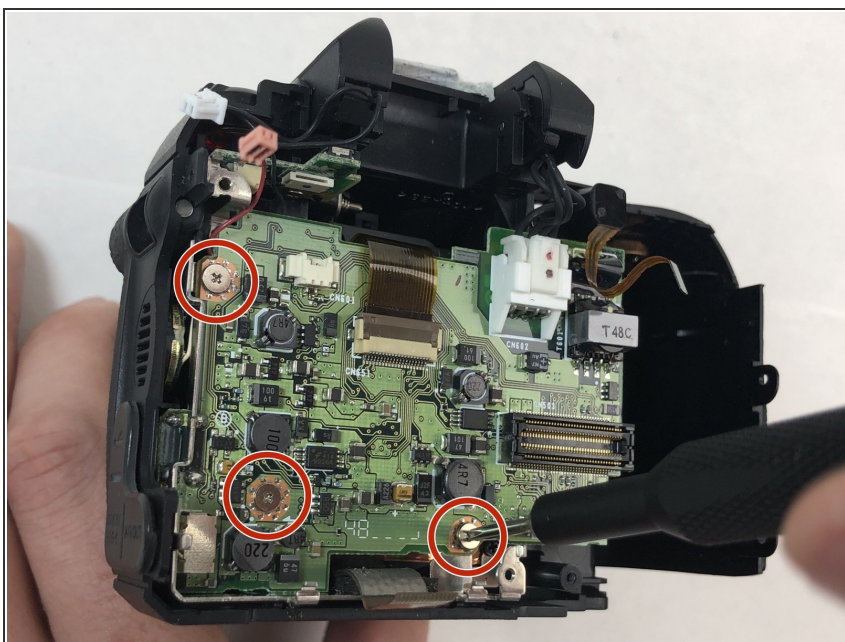
- Remove the single 1.3mm Phillips #000 screw.
- Carefully remove the battery compartment from the rest of the camera.

Step 10 — Motherboard



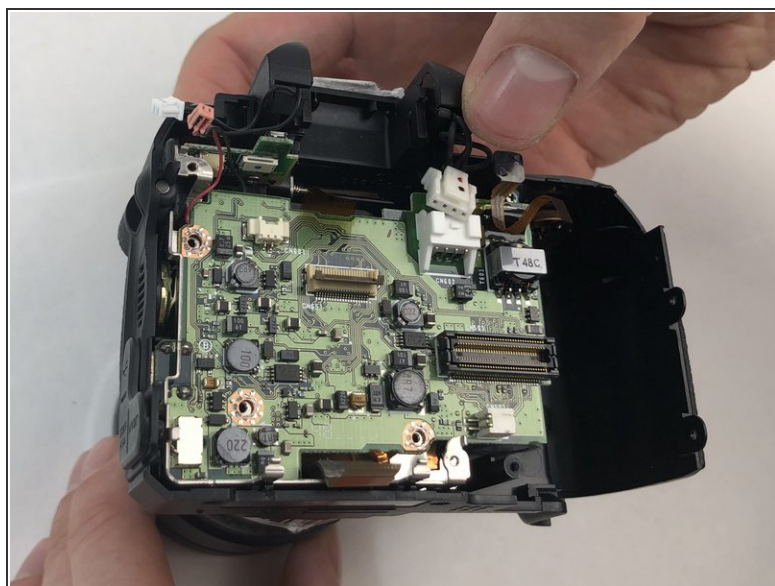
- Carefully grab and remove the upper level motherboard from the camera.

Step 11



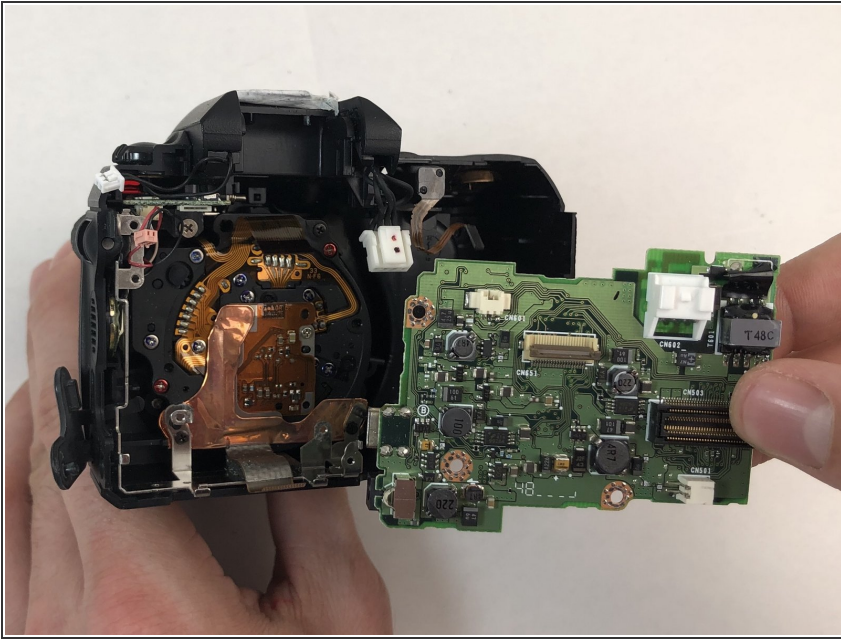
- Remove three 0.8mm Phillips #000 screws from the motherboard.

Step 12



- Carefully remove the tan digital tape from the receiving port.

Step 13



- Carefully remove the lower level motherboard from the camera and set aside.

To reassemble your device, follow these instructions in reverse order.