



Fujifilm Camera Teardown

Written By: Timothy Fogg





TOOLS:

- [Pro Tech Toolkit](#) (1)
-

Step 1 — Fujifilm Camera Teardown



tools needed

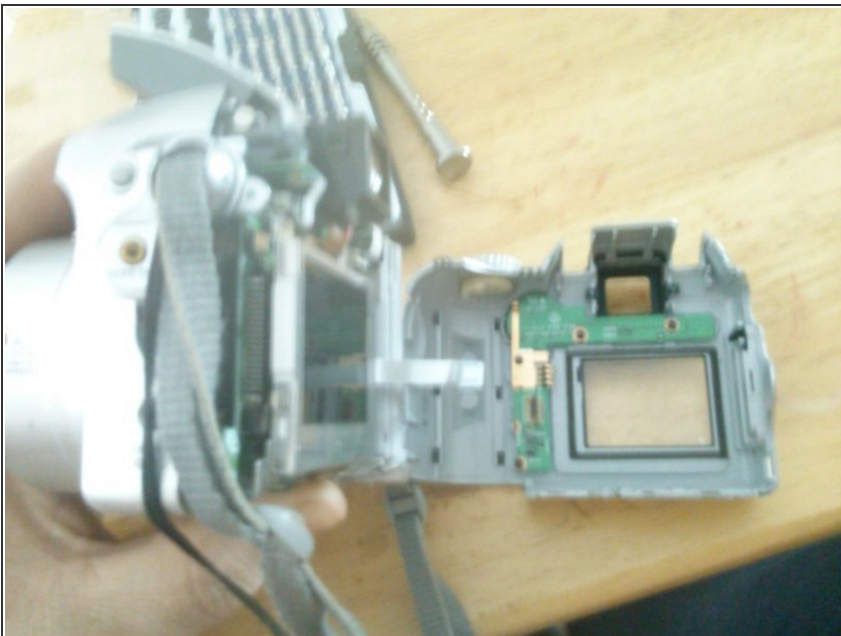
- Phillips 00 screwdriver
- "Y" screwdriver
- tweezers
- small needle nose pliers
- small plastic pry tool
- plastic spudger
- the iFixit Pro Tech tool kit contains all necessary tools for this job

Step 2 — open it up



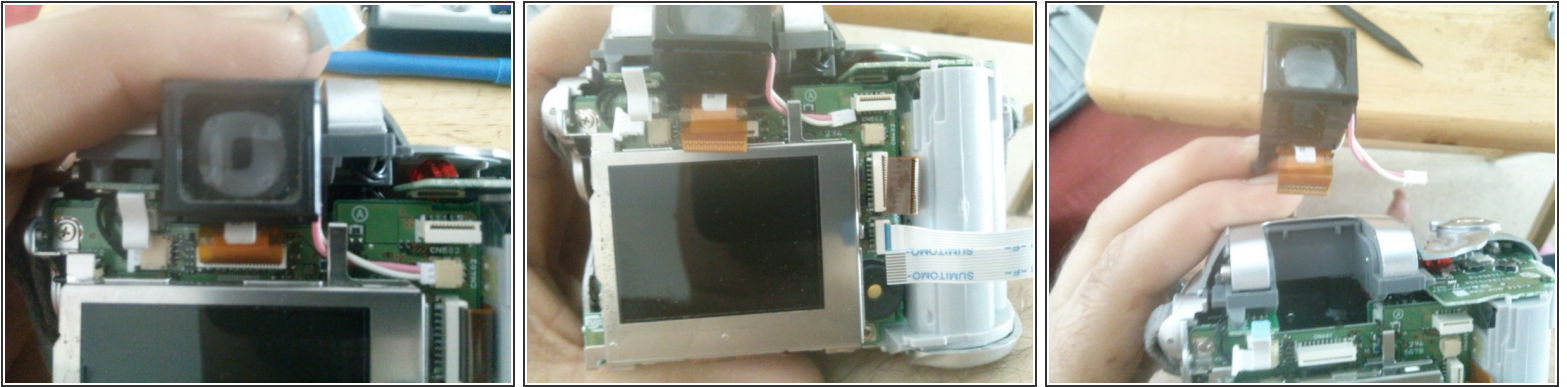
- remove the 2 Phillips 00 screws from the bottom
- remove the 1 Phillips 00 screws from the side
- remove the 2 "Y" screws from the other side

Step 3 — remove back



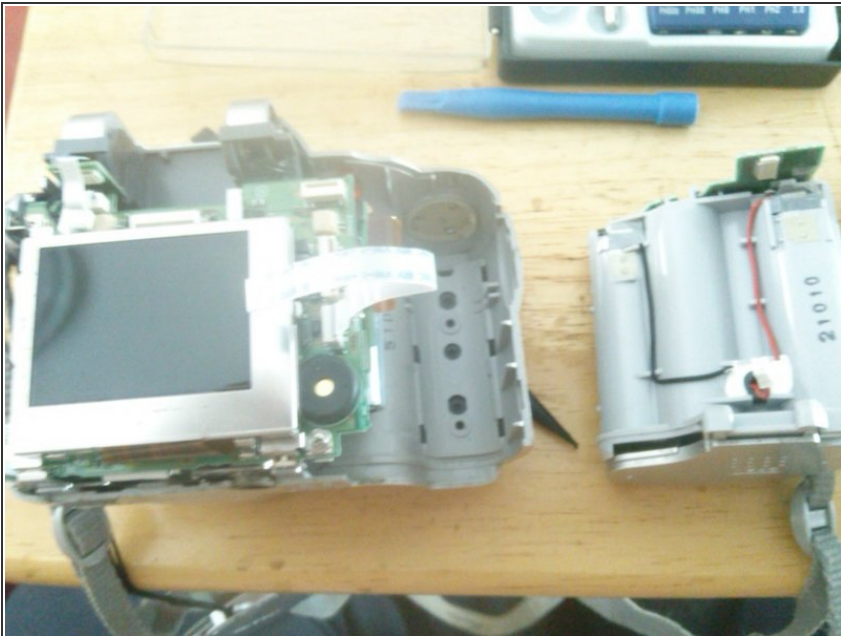
- use your plastic pry tool to remove the back of the camera
- ⚠ make sure the battery door is open as it will hold the back in place
- ⚠ remove back carefully camera has a ribbon cable running to the digitizer screen
- disconnect digitizer cable

Step 4 — remove view finder



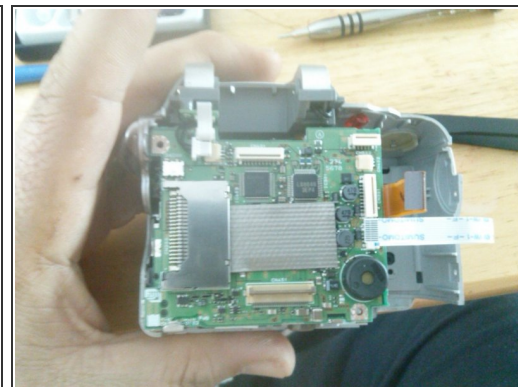
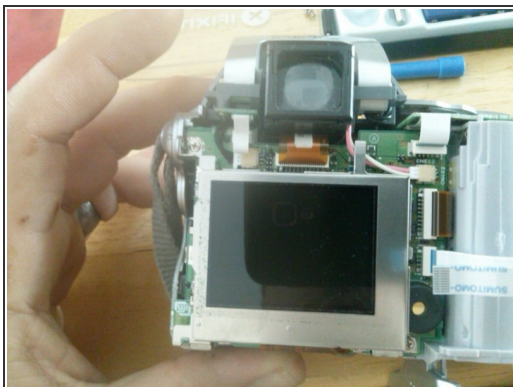
- you should have already disconnected the copper ribbon cable and the molex connector with the pink and white wires.
- wiggle the view finder gently until it comes loose

Step 5 — remove battery compartment



- there is a small white ribbon cable attached to the battery compartment and the camera's logic board. verify that it's disconnected
- there is a molex connector with a black wire and a red wire coming from the battery compartment going to the camera's logic board. disconnect this wire from the logic board.
- using your plastic pry tool carefully free battery compartment from the camera housing

Step 6 — LCD removal



- remove the 2 Phillips screws securing the LCD one is in the upper left corner and the other is on the lower right corner
- gently lift the top of the LCD panel towards you
- ⚠ use caution not to damage the copper ribbon cable behind the display
- use a plastic pry tool to release the latch that secure the cable to the logic board
- gently pull the ribbon cable from the logic board

Step 7 — Removal of logic board 1



⚠ STILL WORKING ON THIS GUIDE PLEASE CHECK BACK