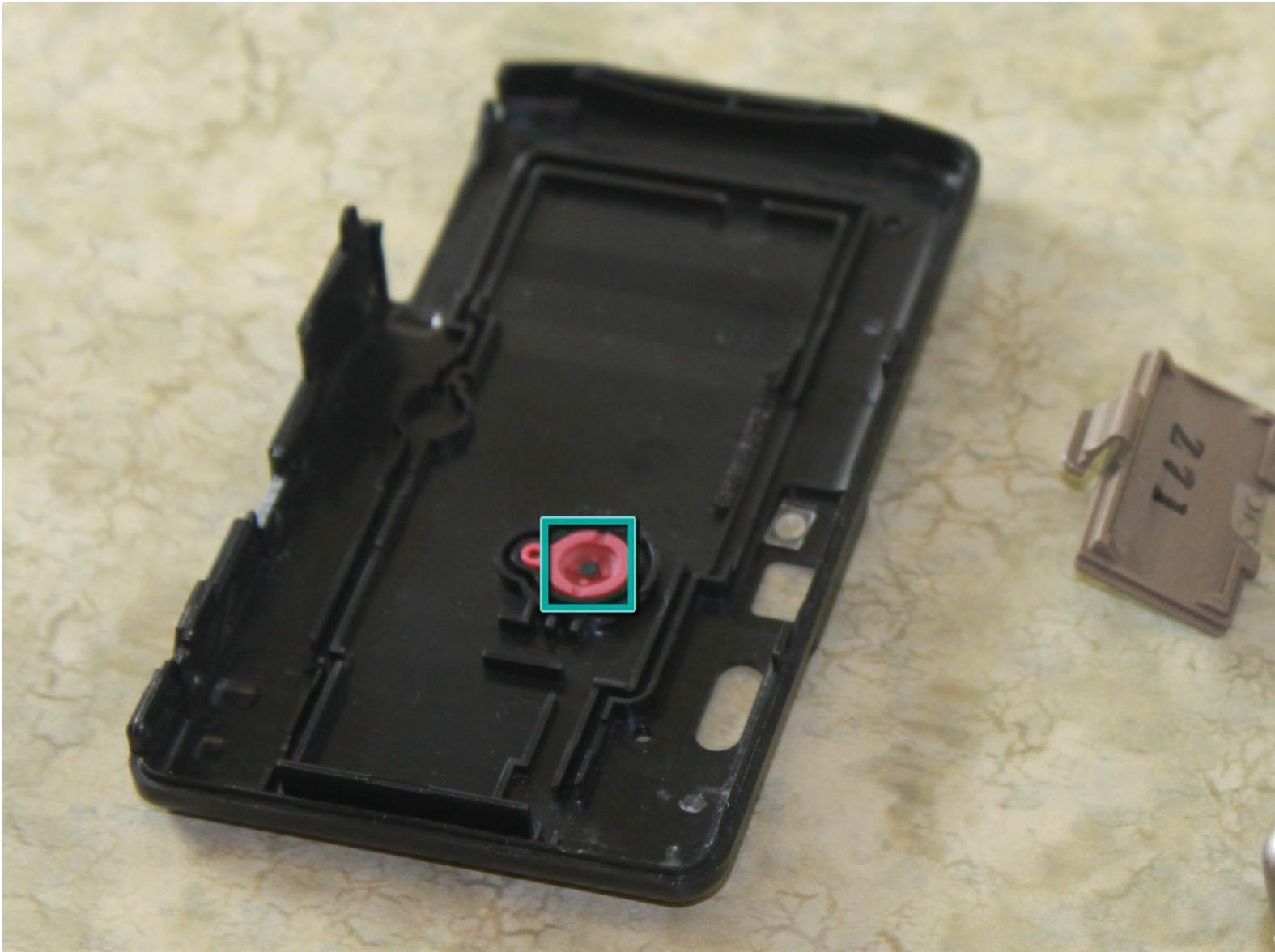




# Fujifilm Endeavor 100ix Power Button Replacement

Bring your camera back to life with a new power button.

Written By: Eric Nicolai



---

## INTRODUCTION

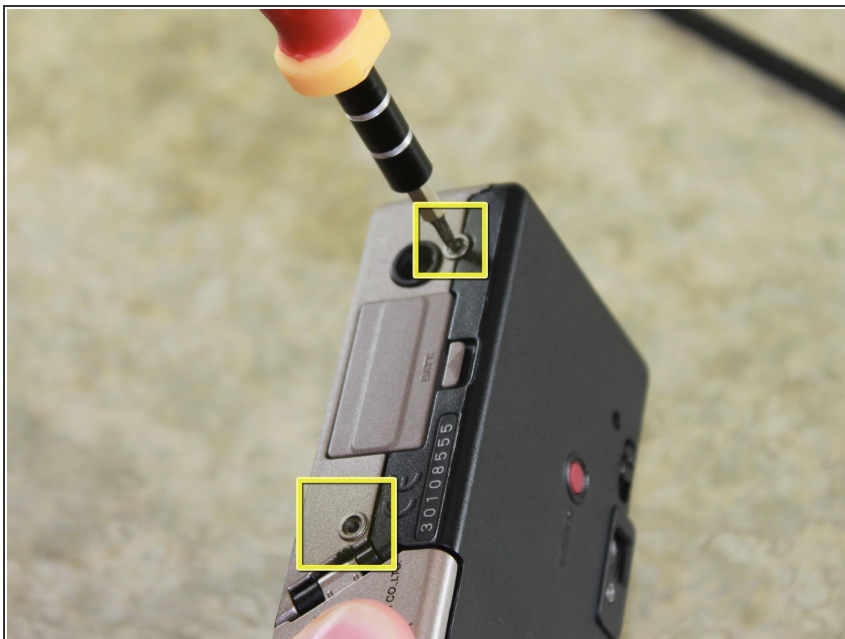
This guide will instruct camera owners how to take off the outer casing and how to access the red, rubber power button. Once you access the button, you can remove it and replace the button with a new one.



### TOOLS:

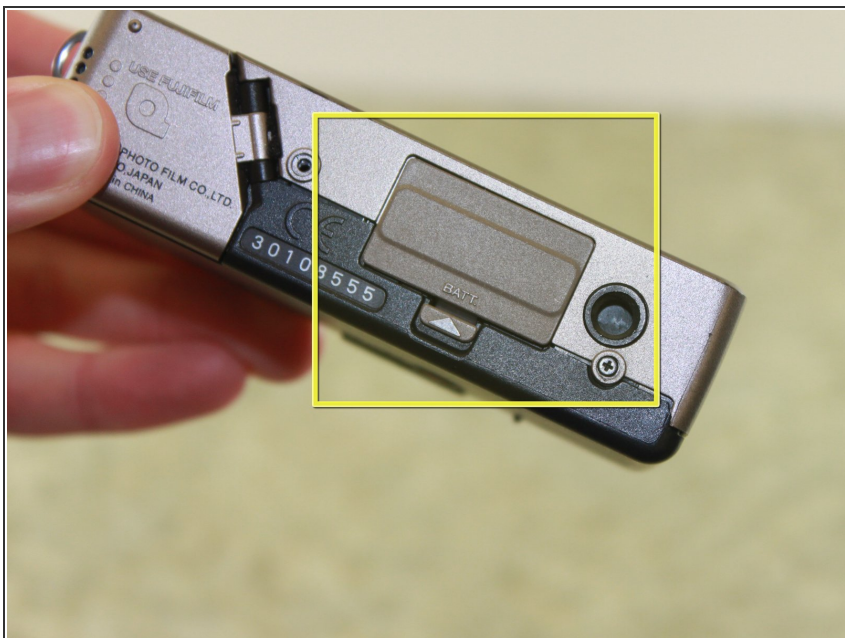
- [Tweezers](#) (1)
  - [Phillips #00 Screwdriver](#) (1)
  - [Spudger](#) (1)
-

## Step 1 — Outer Casing



- Locate and remove two 6.4mm screws on the bottom of the camera with a Phillips #00 screwdriver.

## Step 2



- Locate the battery door.



### Step 3



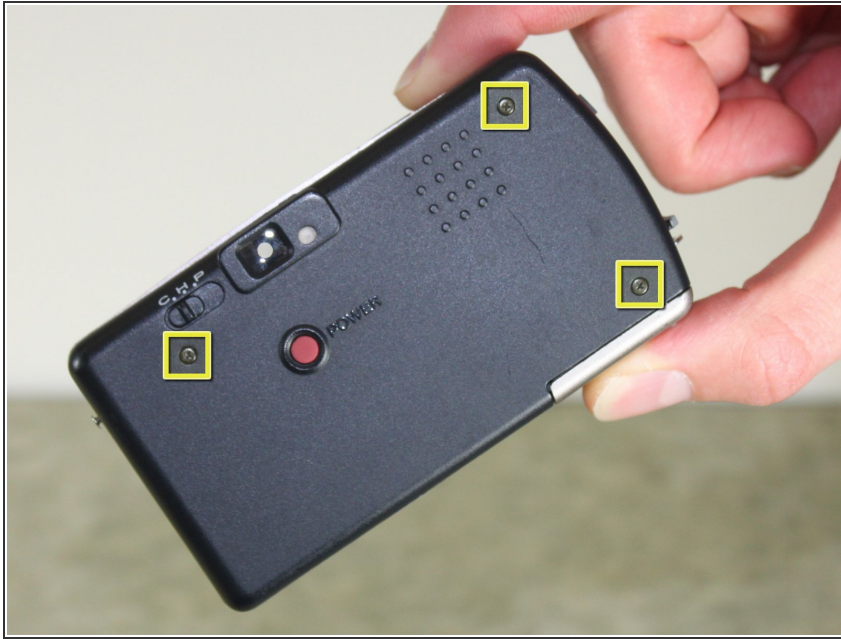
- Locate the latch on the battery door marked by the word "BATT." Use your finger to pry it open.

### Step 4



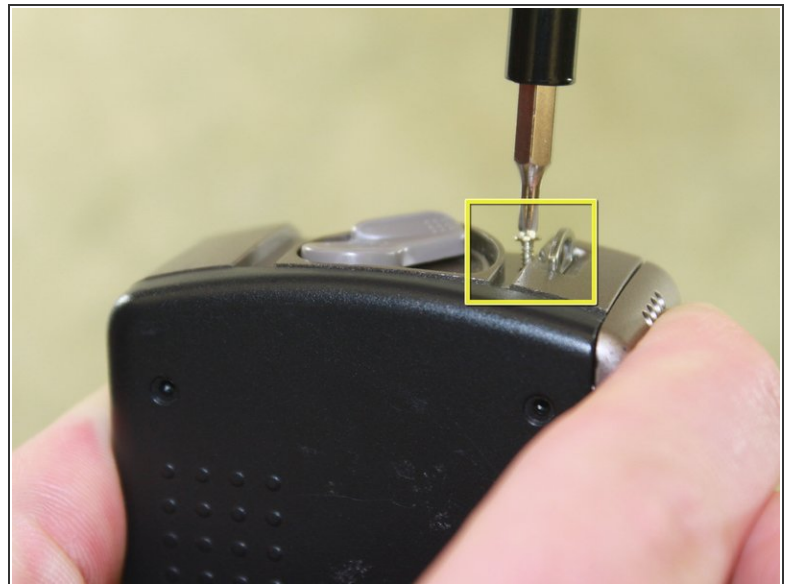
- Remove the battery from the camera by pulling the battery door outwards.

## Step 5



- Locate and remove three black 3.80mm screws on the back of the camera with the Phillips #00 screwdriver.

## Step 6



- Locate and remove the 6.4mm screws located on either side of the camera with a Phillips #00 screwdriver.



## Step 7



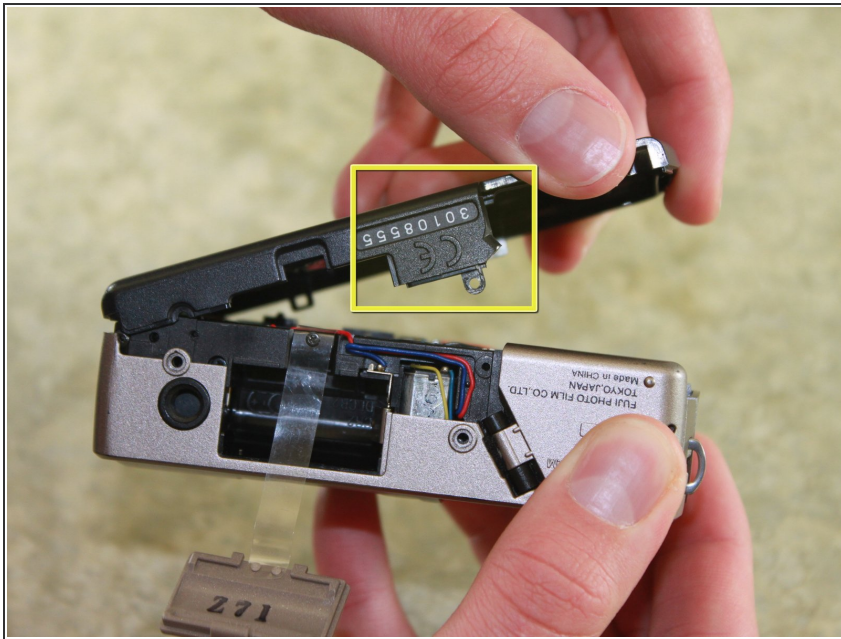
- Locate the film door latch located on the side of the camera.
- Insert the spudger under the latch.
- ⚠ Caution: Be careful during the following step in order to not break any parts within the camera. Prying the latch in any other direction than perpendicular may result in broken parts.
- Pry the latch upward, applying force perpendicular to the camera.

## Step 8



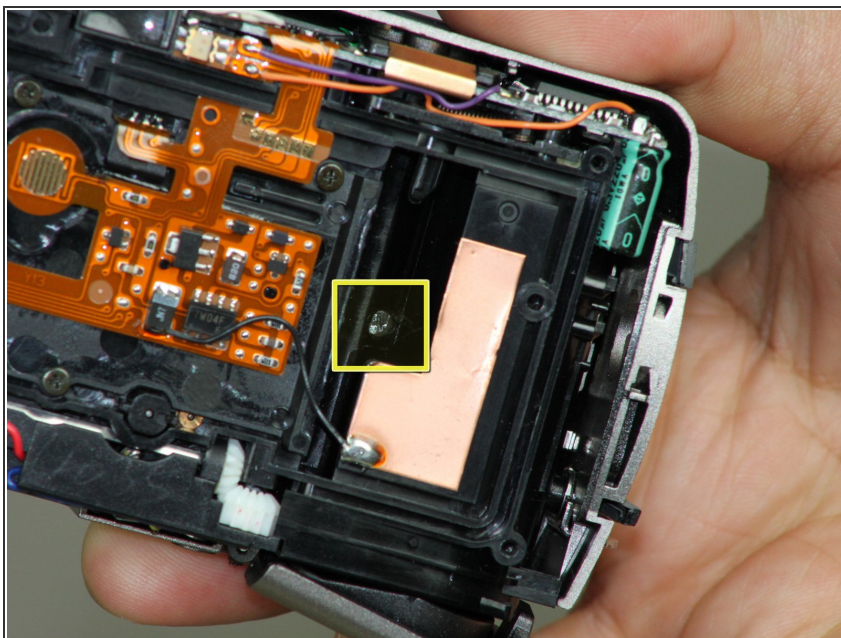
- Insert the flat edge of the spudger between the gold front casing and the black back casing.
- Pry the spudger upward until the black back casing snaps out and is dislodged on that edge of the camera.

## Step 9



- Squeeze the camera by placing a thumb on the tab marked CE.
- Pull the back half of the camera firmly away from the camera body.

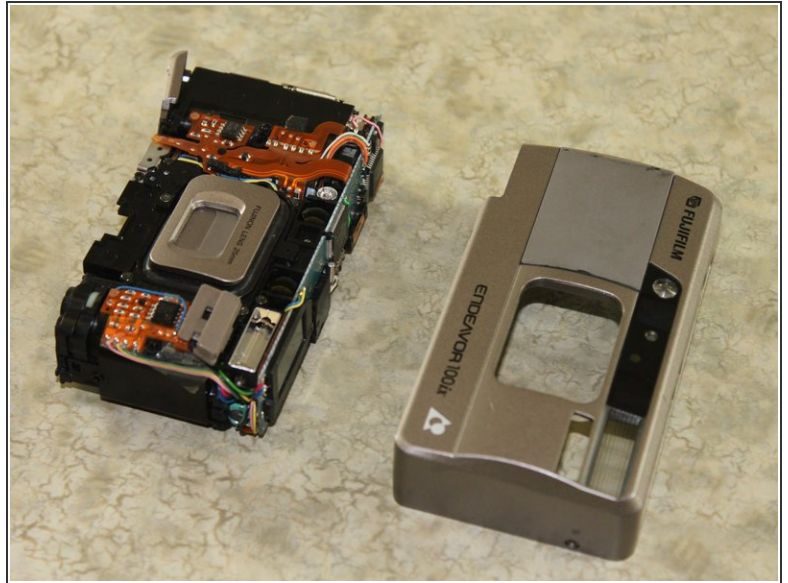
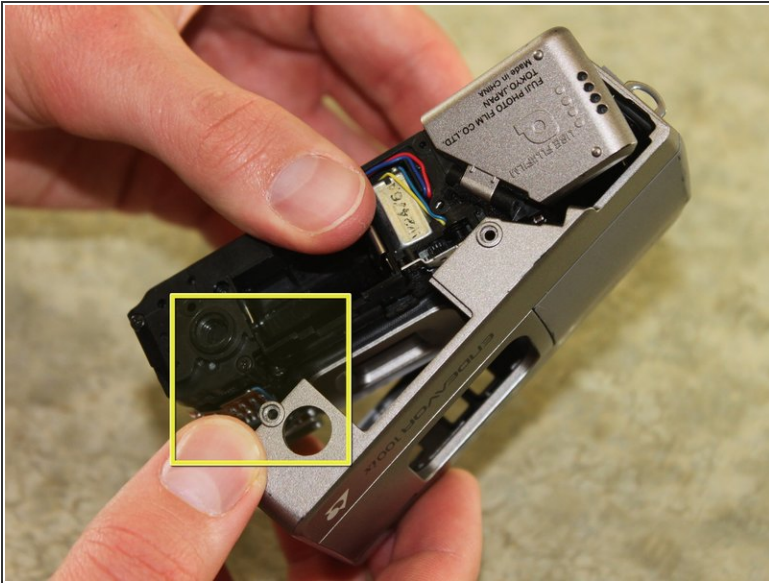
## Step 10



- Locate and remove the 3.80mm screw inside the film compartment with the Phillips #00 screwdriver.

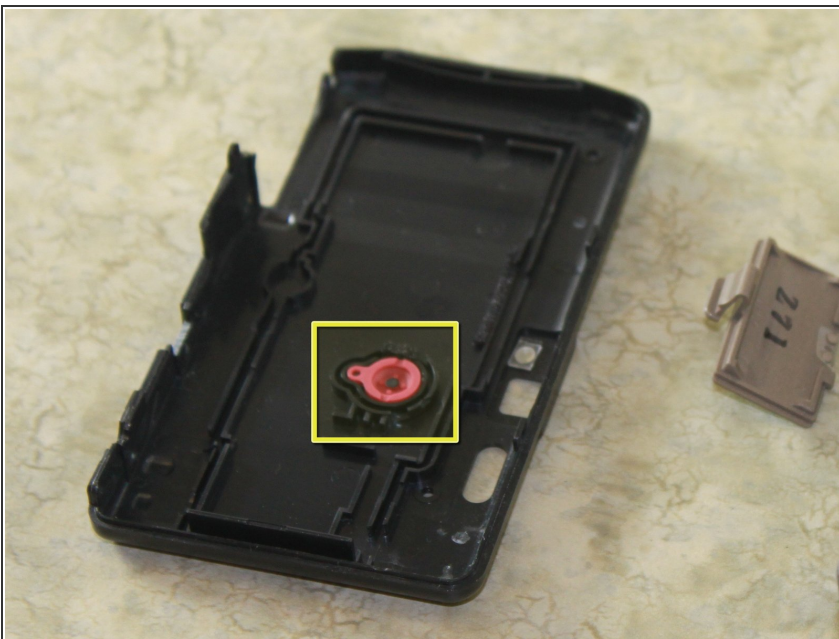


## Step 11



- Pull the front cover off of the camera by lifting the tripod tab over the tripod hole.

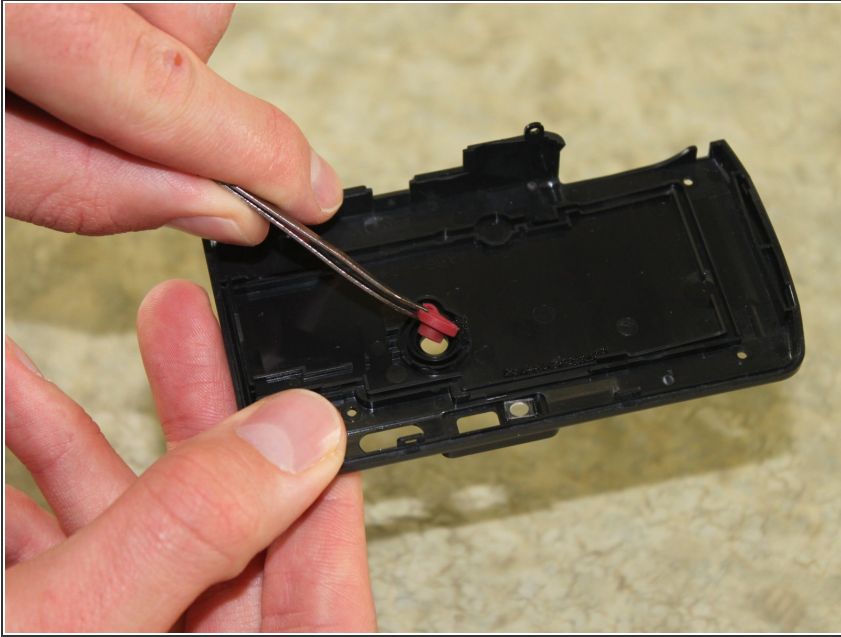
## Step 12 — Power Button



- Look on the inside of the black back casing.
- Locate the red, rubber power button.



## Step 13



- Using the tweezers, grab the red, rubber power button and pull it off the casing.
- Discard the faulty power button.
- Grab the new power button with the tweezers.
- Put the power button into place by placing it where the old button was.

To reassemble your device, follow the instructions from the "Disassembling Fujifilm Endeavor 100ix Outer Casing" guide in reverse order.