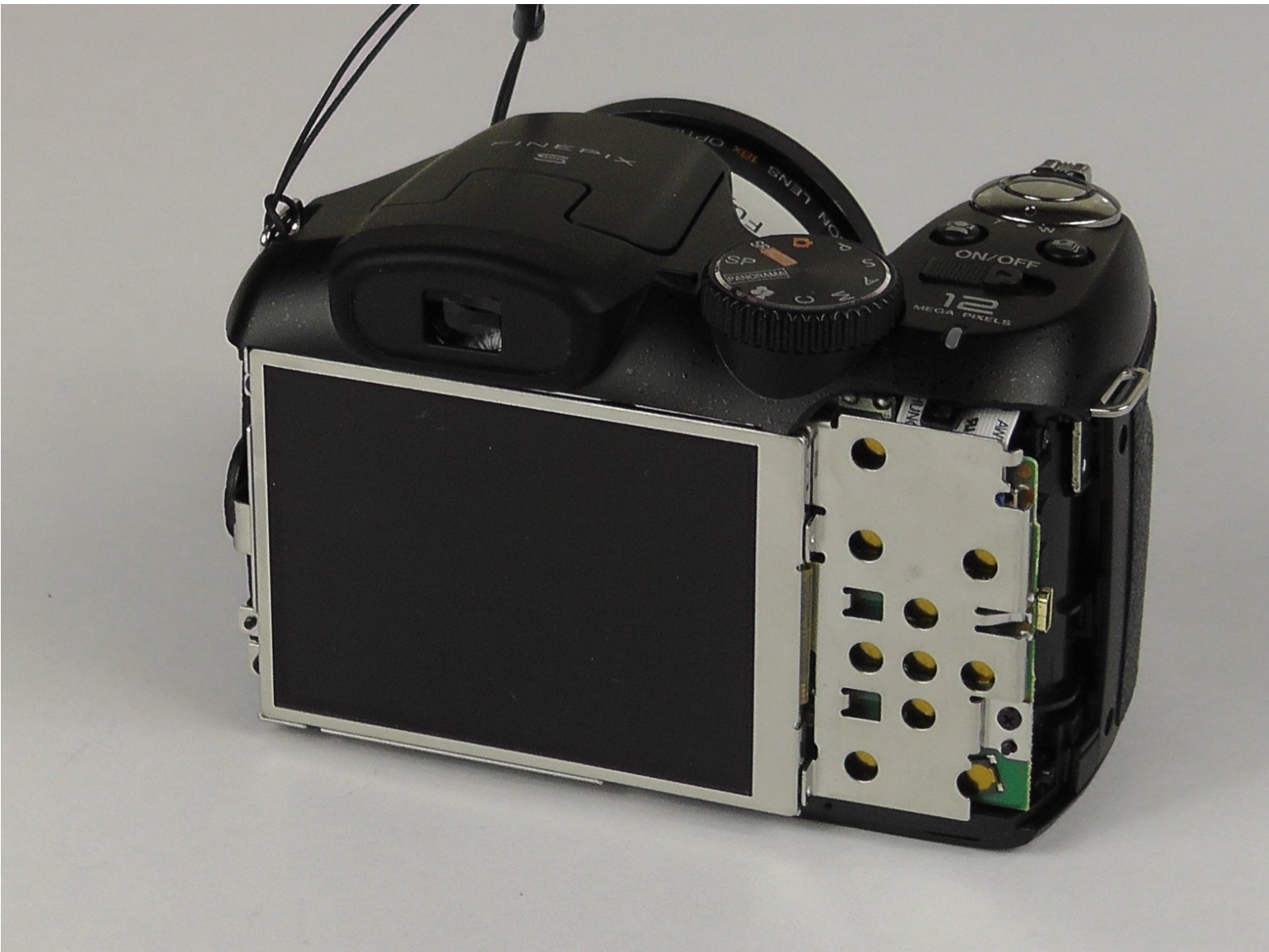




Fujifilm Fine S1800 LCD Screen Replacement

LCD Screen Replacement for the Fujifilm Finepix S1800 Camera.

Written By: Ryan Rockford



INTRODUCTION

This guide explains how to replace the old broken LCD screen.



TOOLS:

- [iFixit Opening Tools](#) (1)
- [JIS Driver Set](#) (1)



PARTS:

- [Fujifilm Finepix Parts](#) (1)
- [Fujifilm FinePix S1800 LCD Screen](#) (1)

Step 1 — Back Cover Assembly



- Use a J000 screwdriver to unscrew all the four 4mm screws on the left-hand side of the camera.

Step 2



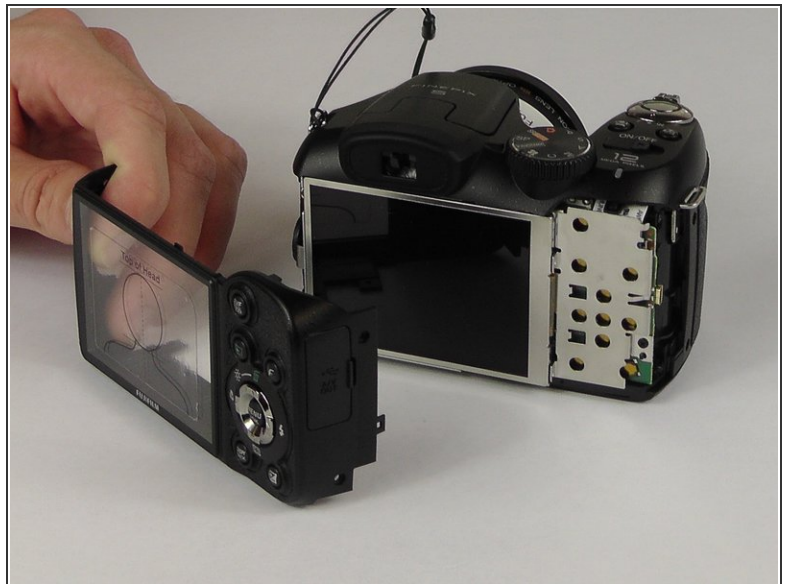
- Use a J000 screwdriver to unscrew the four 4mm screws on the right-hand side of the camera.

Step 3



- Use a J000 screwdriver to unscrew three 4mm screws on the bottom of the camera.

Step 4



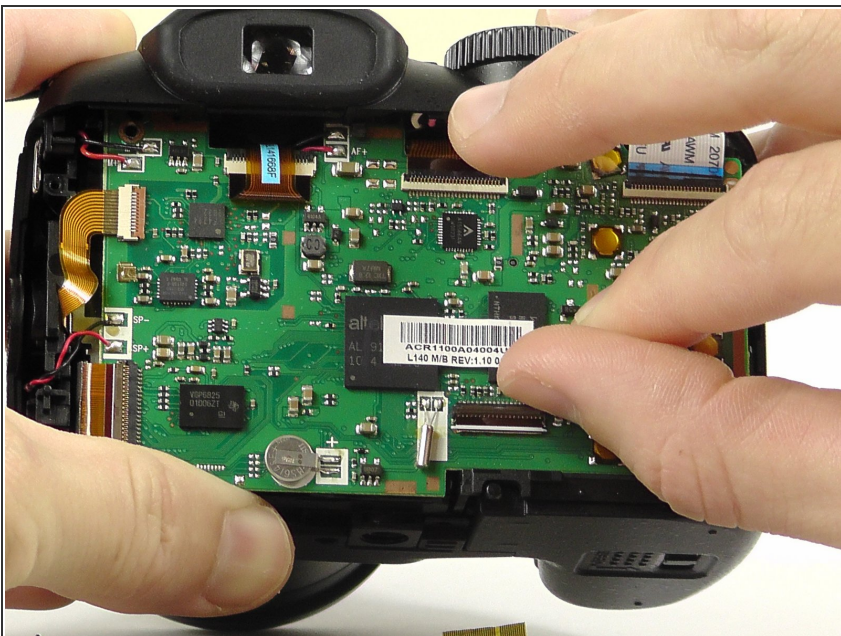
- After all the 4 millimeter screws are taken out, take plastic opening tool and the cover will pop out.
- ⓘ You may have to work the back cover from different sides to get it to pop off.

Step 5 — LCD Screen



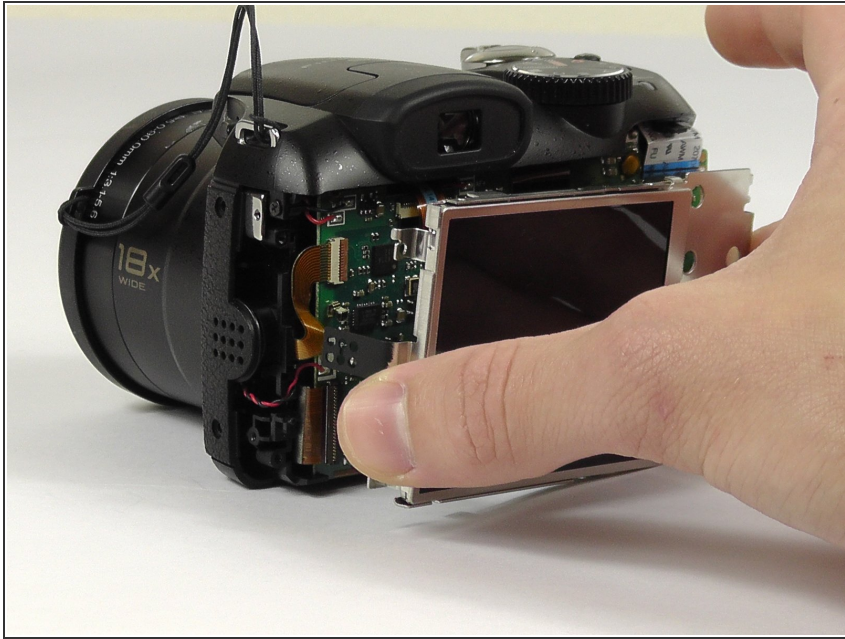
- Use a screwdriver to remove the three 2 mm screws from the back cover plate.
- Gently lift the back cover away from the device, but do not pull or yank free.
- ⚠ The LCD screen is still connected to the motherboard via a small ribbon cable.

Step 6



- Move the lever to disconnect the ribbon cable from the circuit board.
- ⚠ Avoid ripping the fragile micro ribbon cable.

Step 7



- Gently remove the LCD screen. Avoid touching it directly.

To reassemble your device, follow these instructions in reverse order.