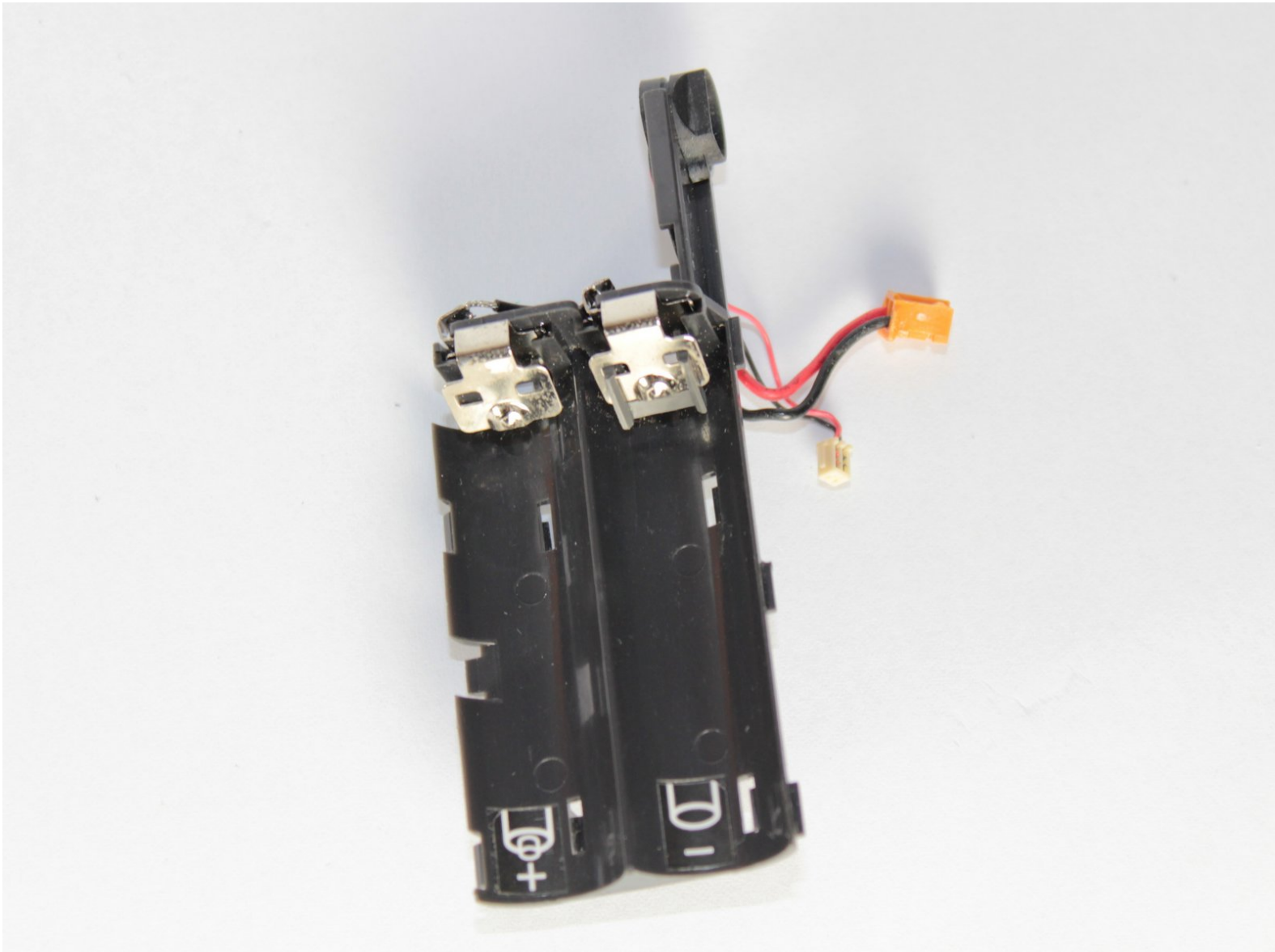




Fujifilm FinePix 4700 Zoom Battery Compartment Replacement

This guide will help you install and remove the battery compartment on the camera.

Written By: Lawrence Yang



INTRODUCTION

In order to access the battery compartment, the back cover of the camera needs to first be removed.

TOOLS:

- [Phillips #00 Screwdriver](#) (1)
 - [iFixit Opening Tools](#) (1)
 - [Spudger](#) (1)
-

Step 1 — Back Cover



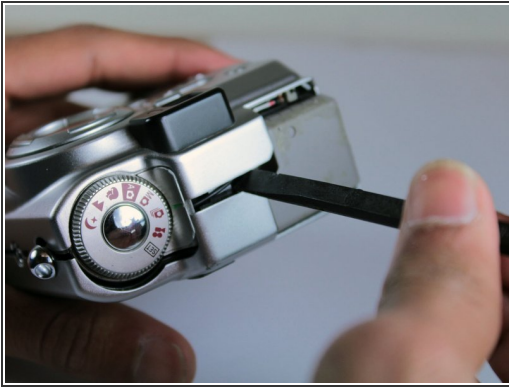
- Use the Phillips #00 screwdriver to remove the 7 screws on the sides of the camera:
 - Four 3.95mm Phillips screws located on the bottom of the camera
 - Two 3.95mm Phillips screws located on the right side of the camera
 - One 3.95mm Phillips screw located on the left side of the camera

Step 2



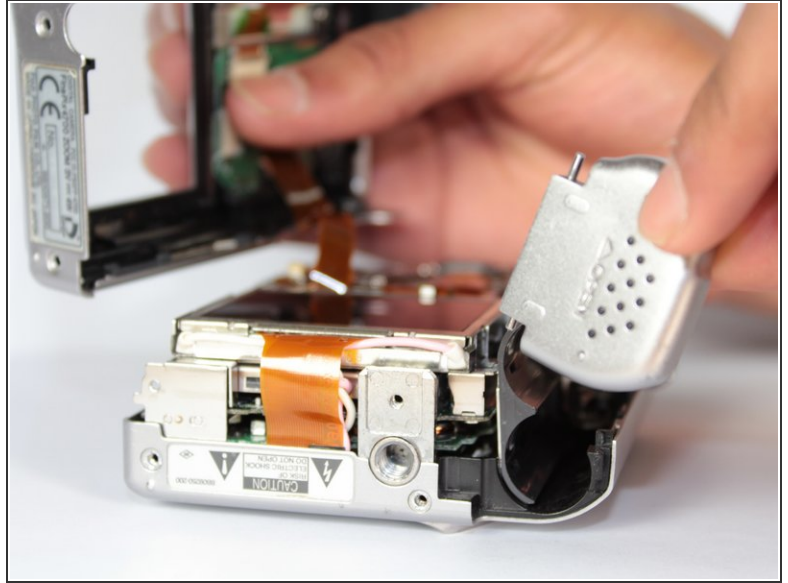
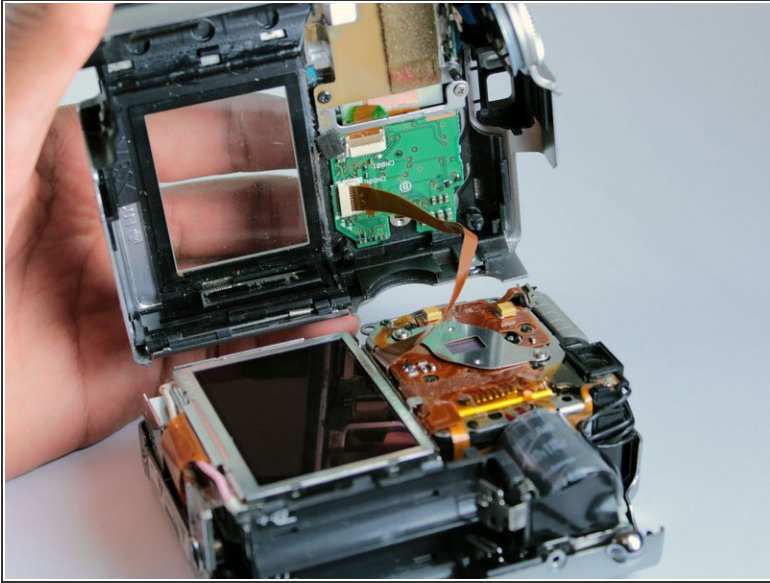
- Slide open the battery compartment cover with your thumb.

Step 3



- Wedge the edge of the spudger between the front and back case, near the corner of the flash.
- Carefully run the spudger along the right edge of the camera, creating an opening.
- Insert the spudger into the left side of the camera, above the screw hole. Then carefully run it along this edge.

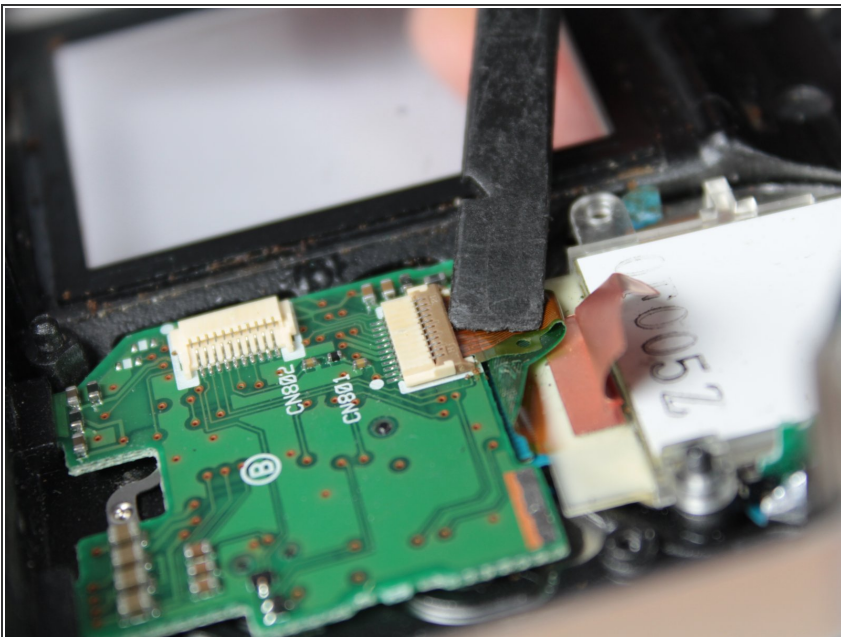
Step 4



⚠ Watch out for the orange ribbon that is still attached to the back cover when you lift it up. It is very delicate and might rip.

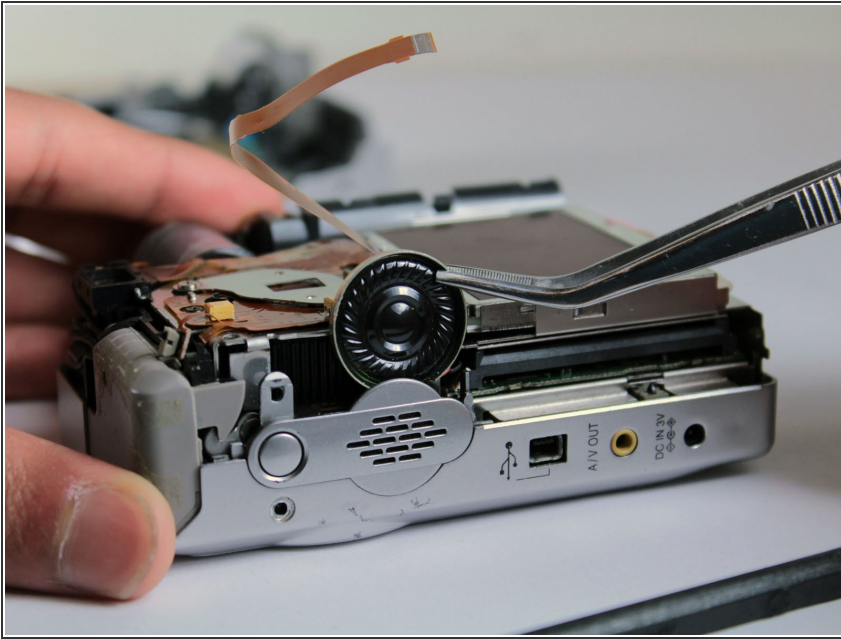
- Slowly lift the back cover straight up, lightly jiggling it if necessary.
- Remove the battery compartment cover.

Step 5



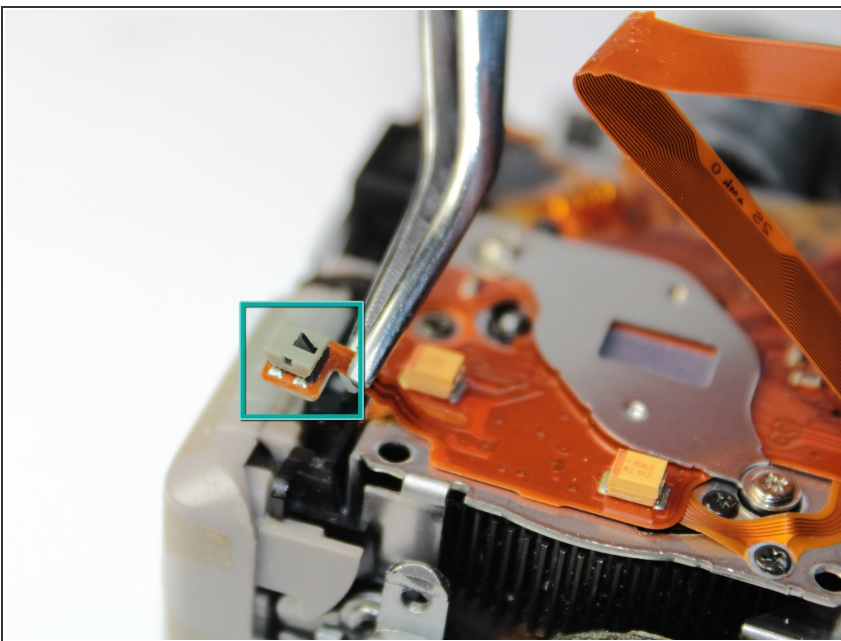
- Gently insert the spudger under the clip holding the orange ribbon. The clip should lift up and the ribbon will slide out.
- This step will free the back cover from the rest of the camera.

Step 6 — Motherboard Unit



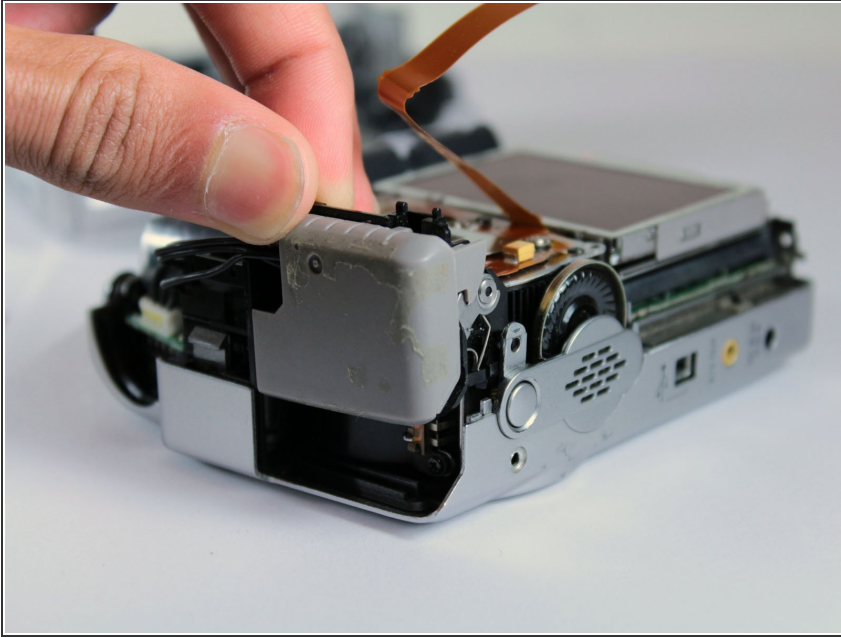
- ⚠ Pull gently when removing the speaker so you don't rip the wire attached to it.
- Use the tweezers to grab the speaker (located on left side of the camera) and pull straight up.
- ⓘ The speaker will still be connected to the motherboard, but it will not be attached to the front case.

Step 7



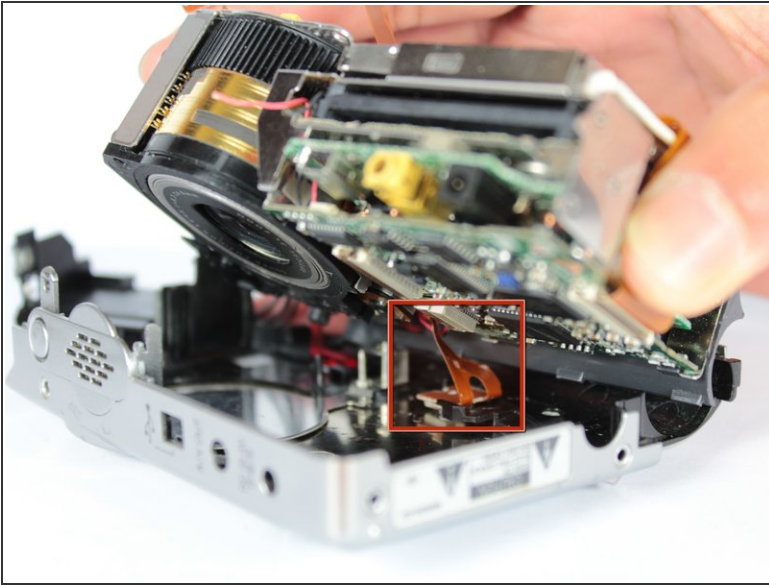
- Use the tweezers to pull gently on the small orange ribbon, located in upper left hand corner near the flash, to remove the square insert.

Step 8



- Use your fingers to slowly pull the flash straight up.
- ⓘ The step may take a little jiggling.

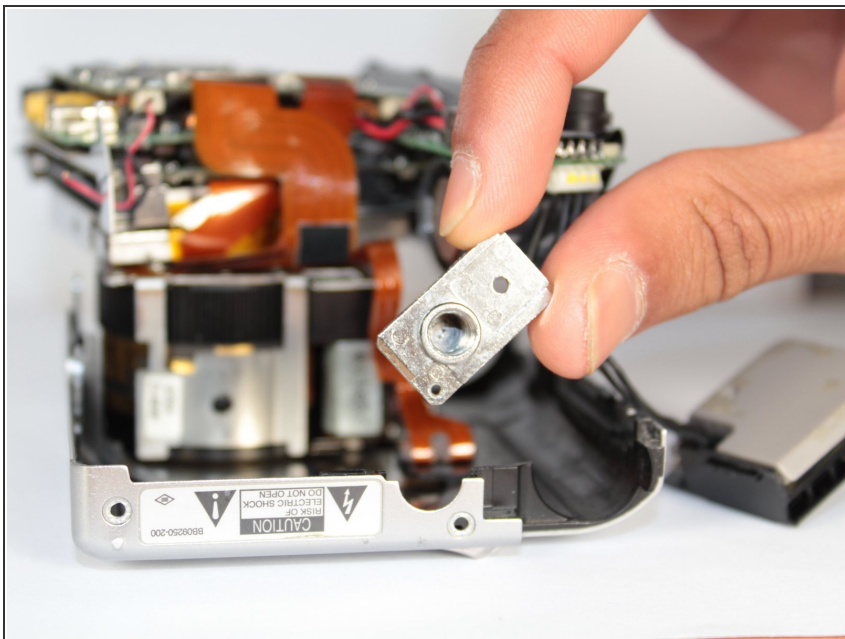
Step 9



⚠ Do not fully separate the motherboard unit from the front cover. There is still a ribbon attached and it will rip.

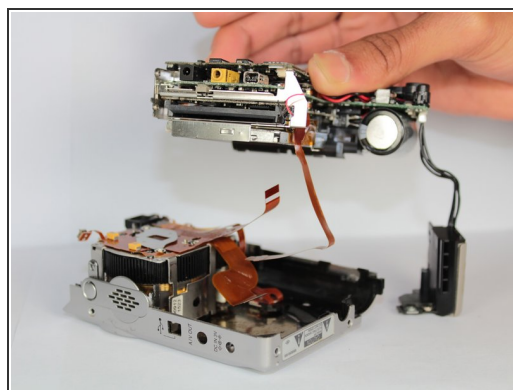
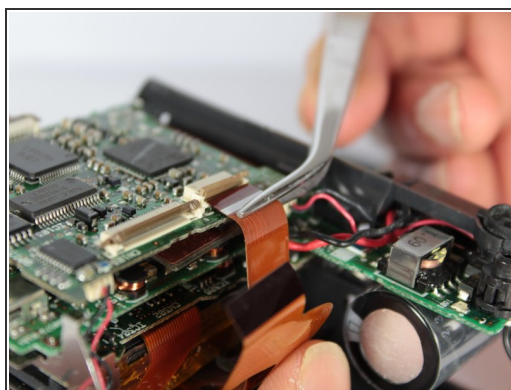
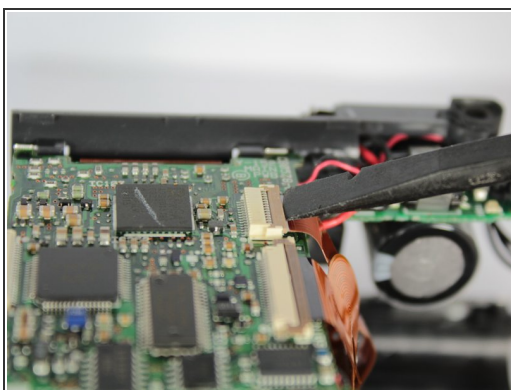
- Slightly separate the front cover from the motherboard unit (which consists of the motherboard, speaker, screen, and battery compartment).
- Rotate the bottom portion of the motherboard unit (the screen and battery compartment) over the lens unit.

Step 10



- Use your fingers to remove the tripod mount.

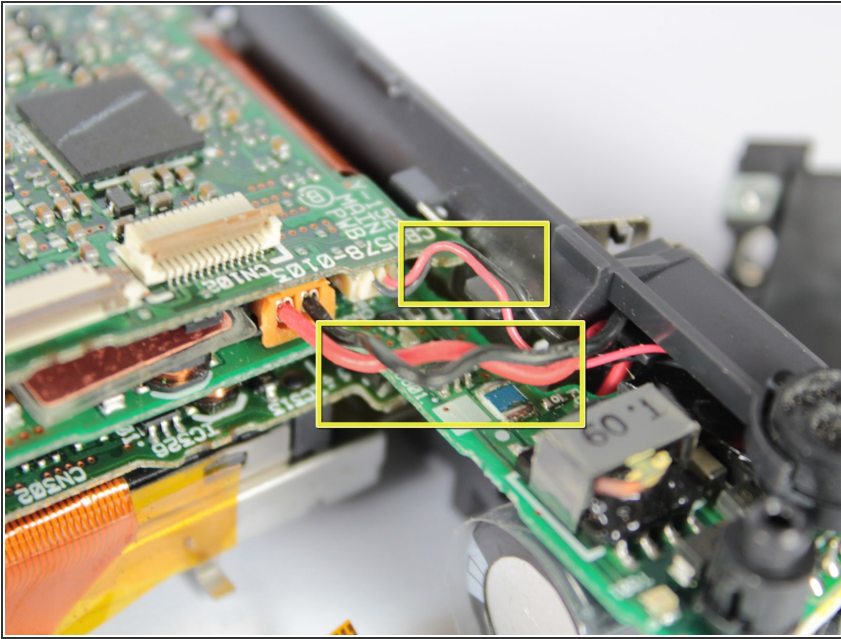
Step 11



⚠ Be gentle when undoing the ribbon clips. They break easily.

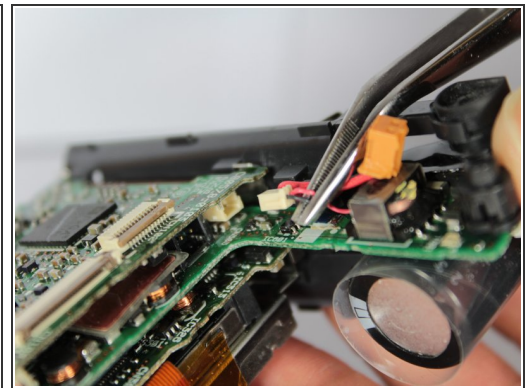
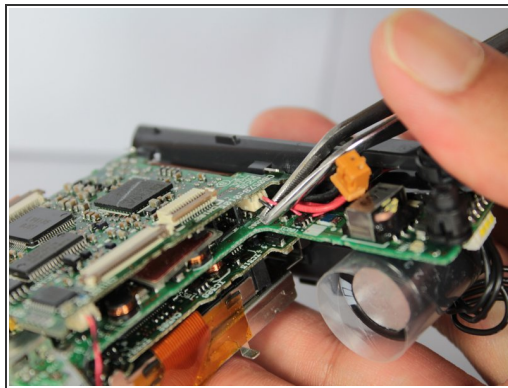
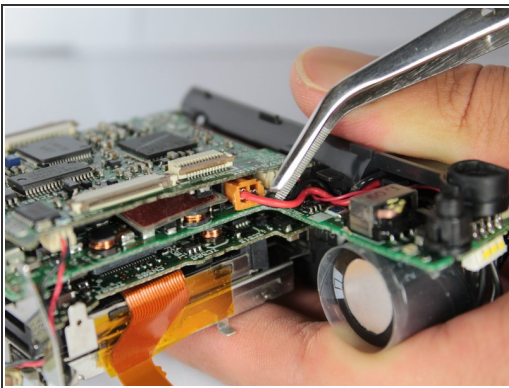
- Gently stick the spudger under the ribbon clips and lift them up.
 - Use the tweezers to pull both ribbons out of the ribbon clips.
- ⓘ The motherboard unit should now be free from the rest of the camera.

Step 12 — Battery Compartment



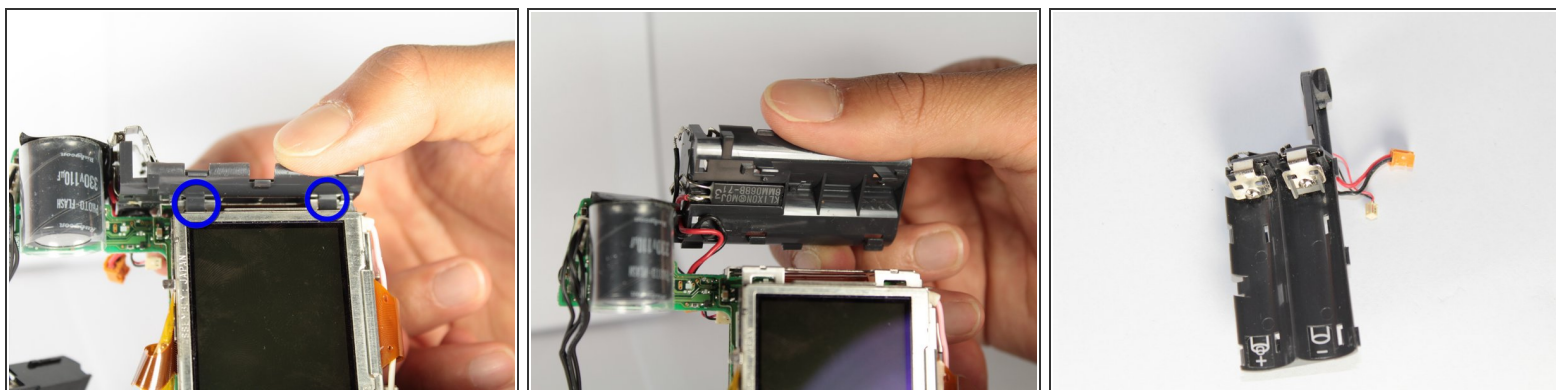
- Locate the wires running from the battery compartment to the main motherboard.
- ❗ There are two sets of black and red wires.

Step 13



- Use the tweezers to grab one set of wires near where it connects to the motherboard.
- Pull the set of wires straight out.
- Repeat these steps for the other set of wires.

Step 14



- Lift and pull outward (at the same time) the two battery clips that are next to the screen.
- The battery compartment should now be detached from the rest of the motherboard unit.

To reassemble your device, follow these instructions in reverse order.