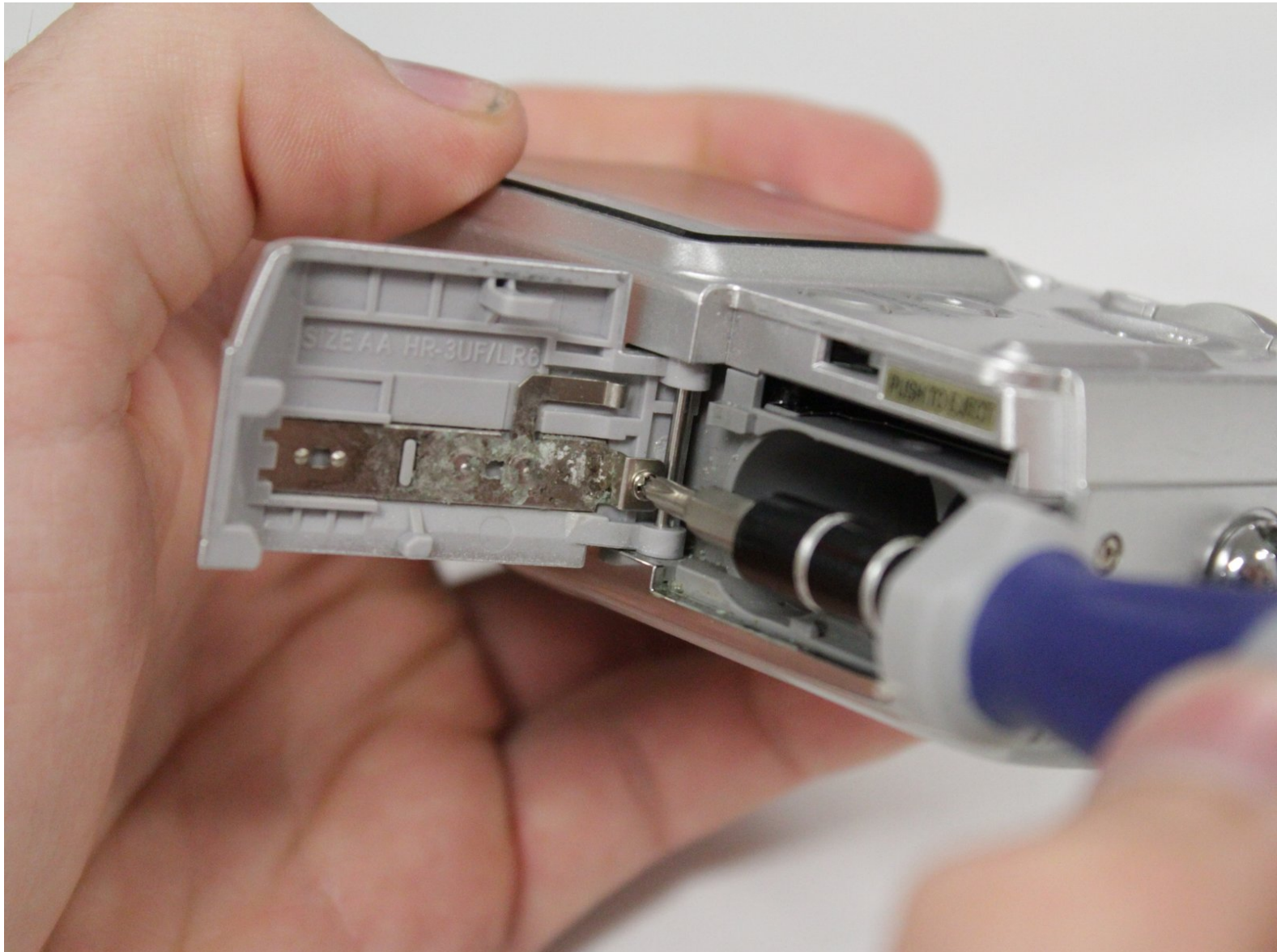




# Fujifilm FinePix A350 Battery Contact Replacement

This guide offers instruction to remove and replace the battery contact.

Written By: Jaxon Cramer



---

## INTRODUCTION

This guide is useful in the event that metal oxides (such as rust) accumulate on the battery contact and cause intermittent power failure.

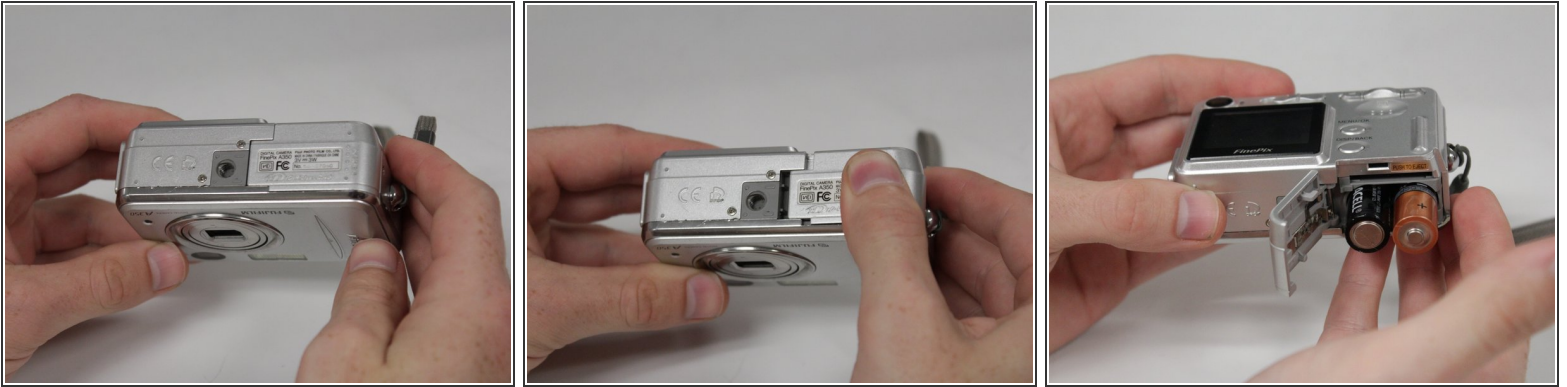
---



### TOOLS:

- [Phillips #0 Screwdriver](#) (1)
-

## Step 1 — Batteries



- Locate the battery hatch on the bottom side of the camera, opposite the side with the power button.
- Using your thumb, slide the hatch away from the center of the camera.
- Flip the hatch toward yourself to open it. The batteries are spring-loaded; once the hatch is open, they will protrude far enough to be removed by hand.

## Step 2 — Battery Contact



- On the underside of the battery hatch, locate the single 3.0 mm screw connecting the battery contact to the hatch. Remove it using a Phillips screwdriver with a #0 bit.
- Lift the contact from the end where the screw was located and pull away from the hatch to remove it.

To reassemble your device, follow these instructions in reverse order.

This document was generated on 2019-10-02 03:25:49 PM (MST).

