



Fujifilm FinePix AX655 Buttons and Switches Replacement

Use this guide to replace the buttons and switches in your Fujifilm FinePix AX655.

Written By: Zheng Xu



INTRODUCTION

The buttons and switches on Fujifilm AX655 help you take pictures and videos, also help you navigate through the different features of the camera. The buttons and switches can be damaged or broken. To ensure the proper operation of the camera, all damaged buttons and switches should be replaced. If you are having trouble pressing your buttons, or they stick when they are pressed, follow this guide to replace your buttons.



TOOLS:

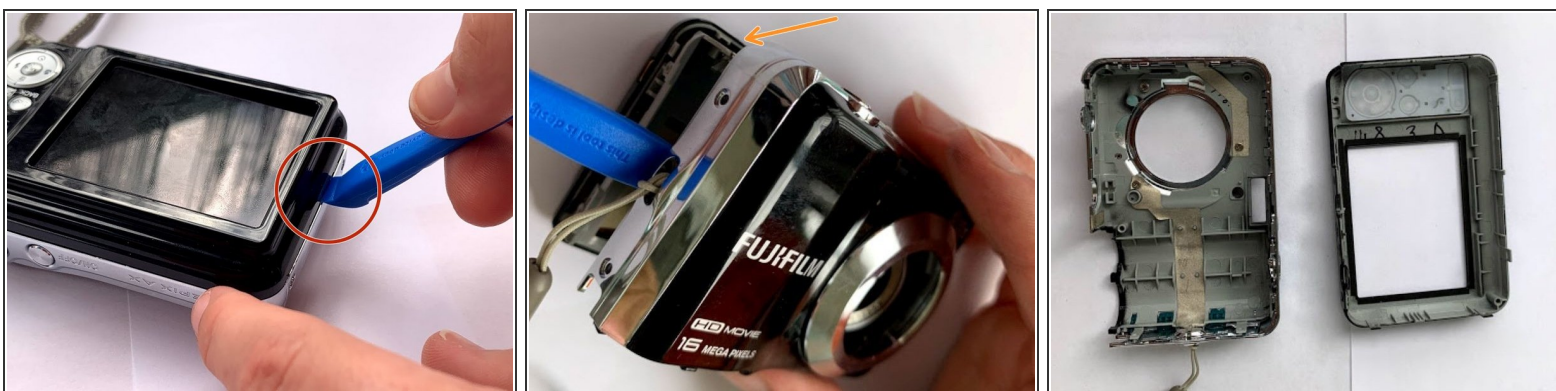
- [Phillips #00 Screwdriver](#) (1)
 - [Tweezers](#) (1)
 - [iFixit Opening Tools](#) (1)
-

Step 1 — Buttons and Switches



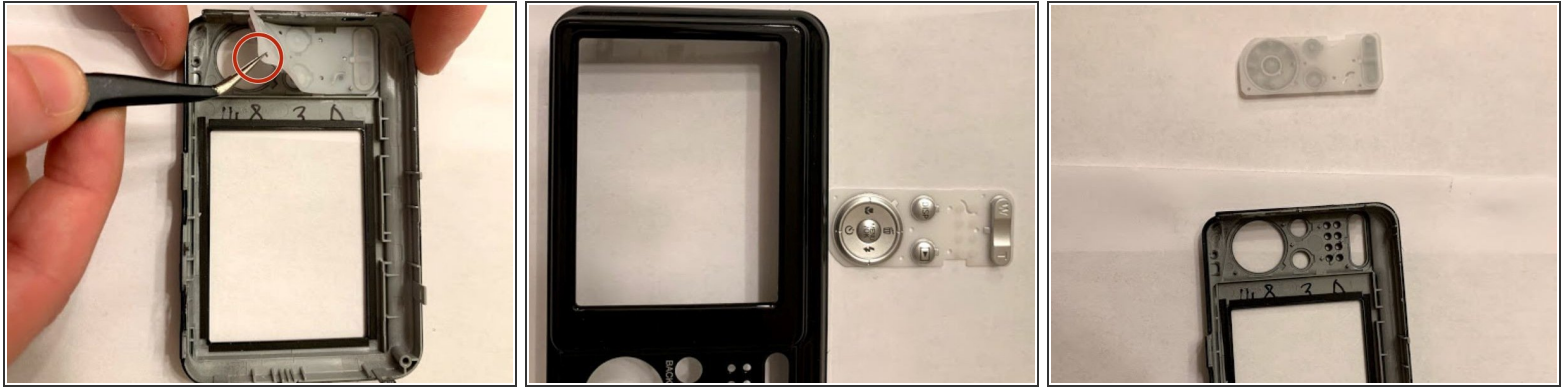
- Use a #00 Phillips screwdriver to remove all six screws around the camera that is holding the case.

Step 2



- Use a plastic pick to separate each side of the camera case apart.
- Separate the case.

Step 3



- Using tweezers remove the rubber buttons from the camera housing.

To reassemble your device, follow these instructions in reverse order.