



# Fujifilm FinePix AX665 Battery Door Hinge Replacement

Use this guide to replace the battery door hinge in your Fujifilm FinePix AX665 camera.

Written By: Zheng Xu



---

## INTRODUCTION

The Hinge/Battery door of the Fujifilm FinePixAX655 makes sure the batteries are covered and securely locked in place, it also prevents dirt from getting into the battery terminals. The shaft and spring of the batter door can also be changed if damaged.

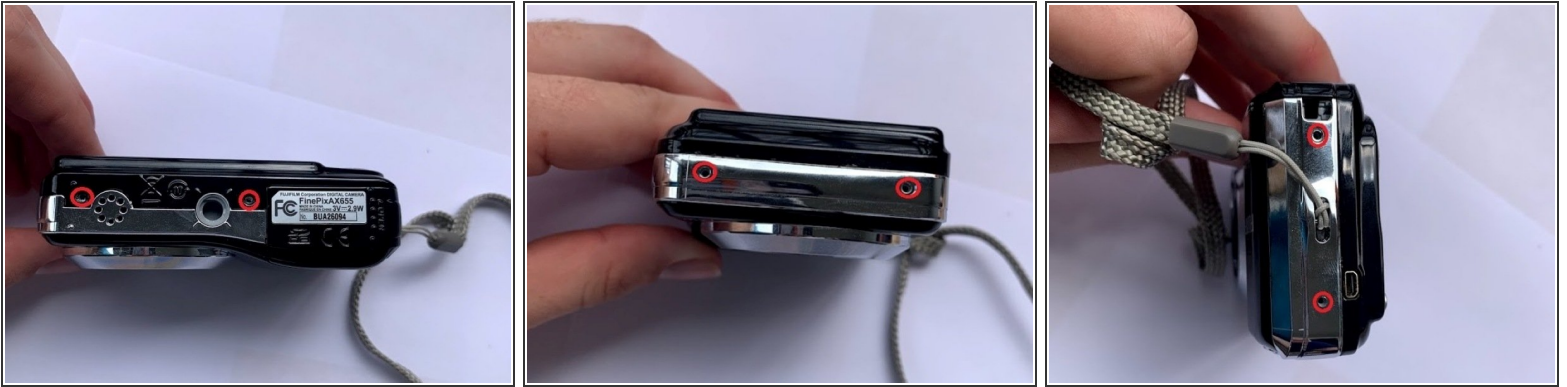
If you are having difficulty opening the battery door or keeping it closed, follow this guide to replace the door spring and shaft.



### TOOLS:

- [Tweezers](#) (1)
  - [Phillips #00 Screwdriver](#) (1)
  - [iFixit Opening Tools](#) (1)
-

## Step 1 — Battery Door Hinge



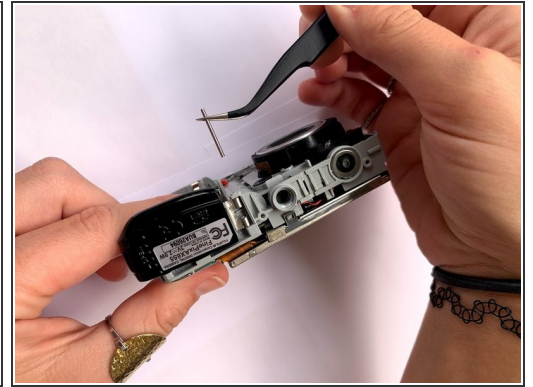
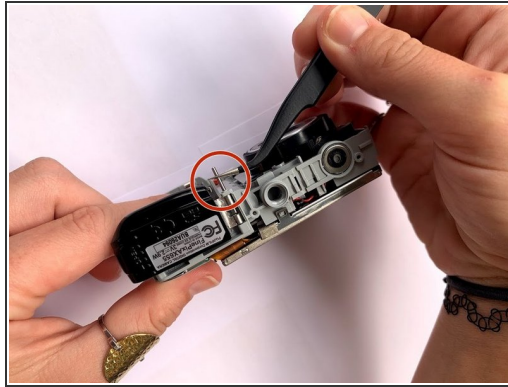
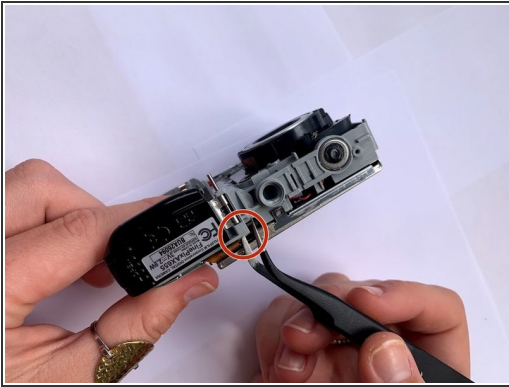
- Use a Phillips #00 screwdriver to remove the six screws around the camera in order to be able to remove the case.
- Slide the battery door to the unlocked position

## Step 2



- Use a plastic pick to separate each side of the camera case apart

### Step 3



- Put the tweezers in one end where the bar that connects the battery door to the body of the camera so that the end of the bar sticks out.
- Remove this metal bar and replace with new one if damaged

To reassemble your device, follow these instructions in reverse order.