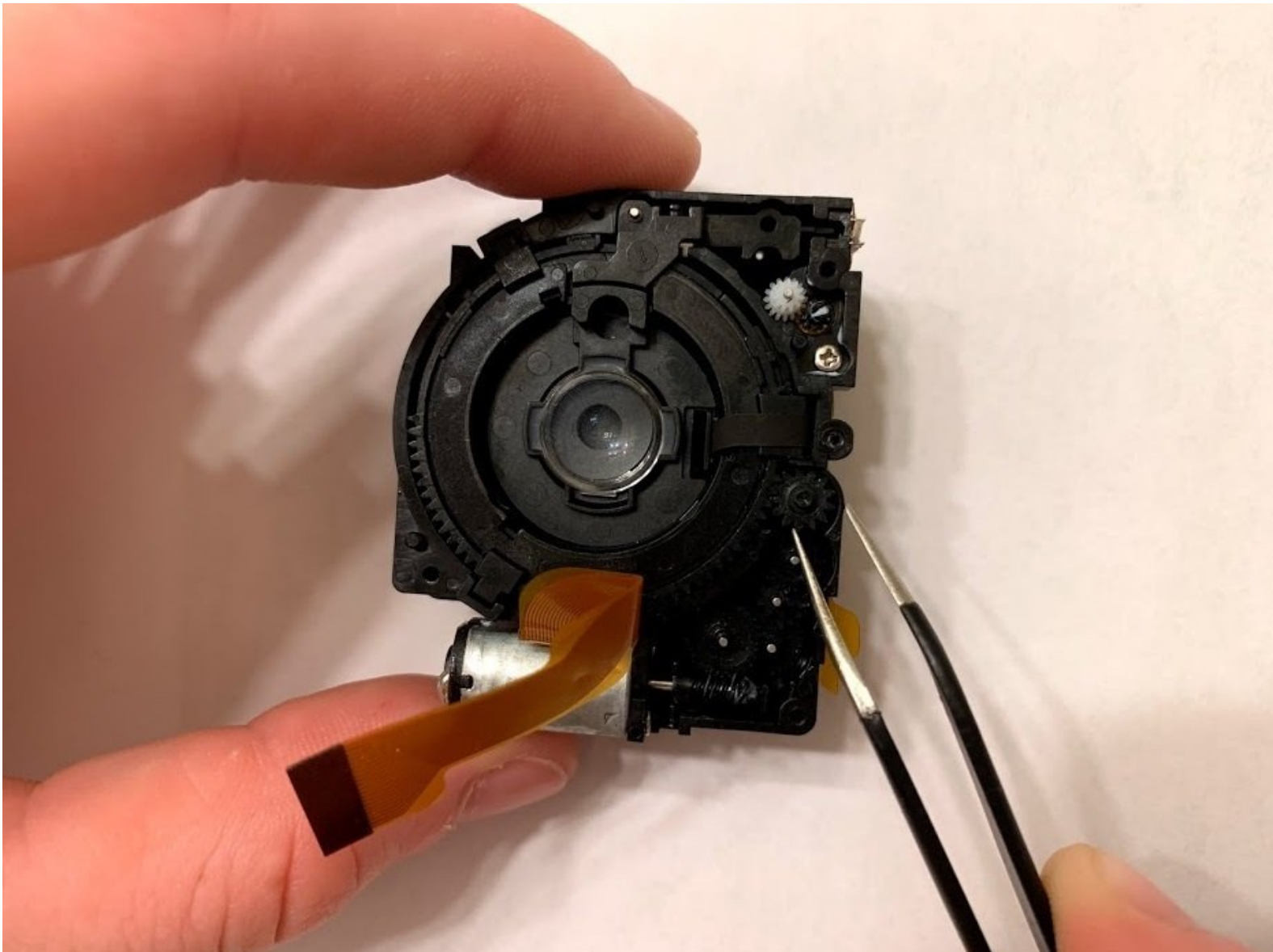




Fujifilm FinePix AX665 Lens Assembly and Gears Replacement Replacement

Use this guide to replace the lens assembly in your Fujifilm FinePix AX665.

Written By: Zheng Xu



INTRODUCTION

The camera can not take a proper picture if the gears in the lens are broken or worn out. The replacement of the gears will ensure the proper movement of the lens and the quality of the pictures. If the lens of your camera sticks or will not move when you try zooming in or out, follow this guide to safely replace the lens assembly and gears.

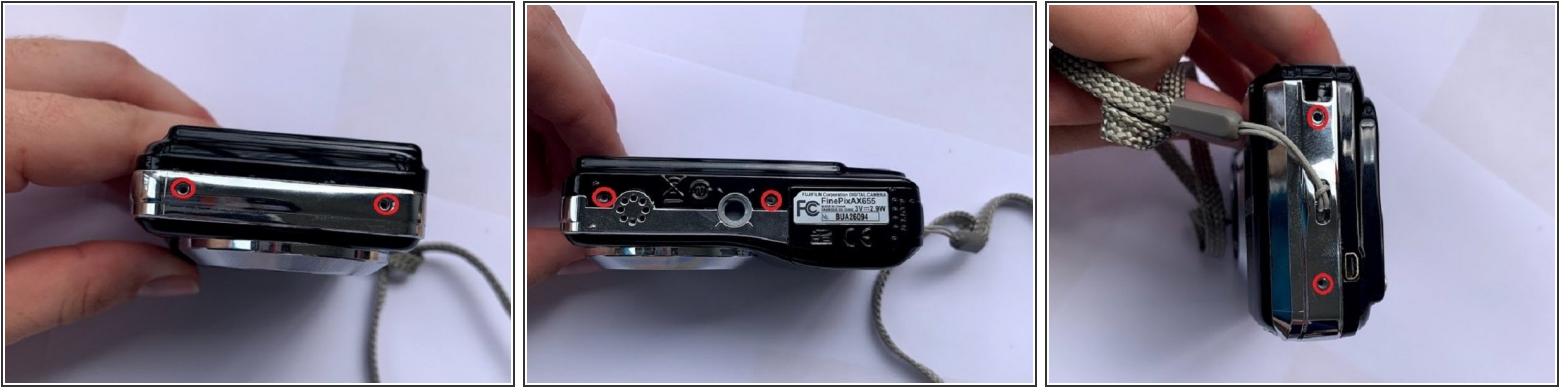
The camera will be completely open during this repair. Follow the pictures carefully to make sure you are working with the correct parts



TOOLS:

- [iFixit Opening Tools](#) (1)
 - [Tweezers](#) (1)
 - [Phillips #00 Screwdriver](#) (1)
-

Step 1 — Lens Assembly and Gears



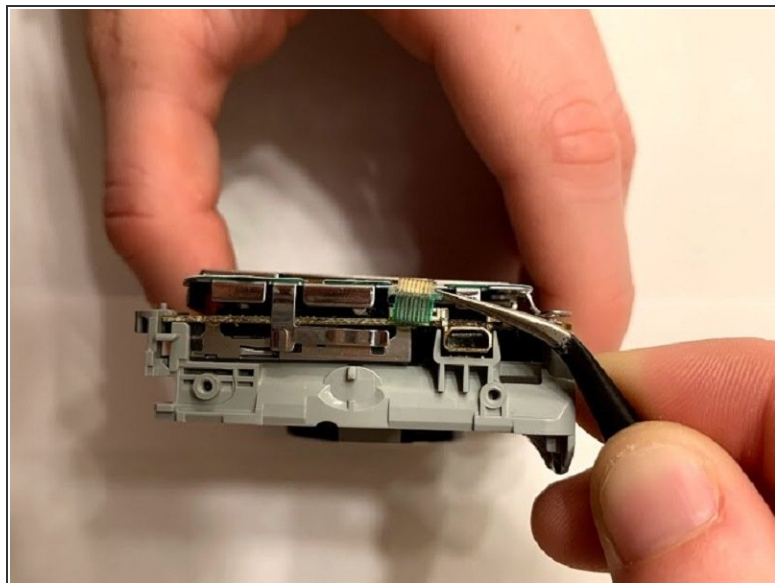
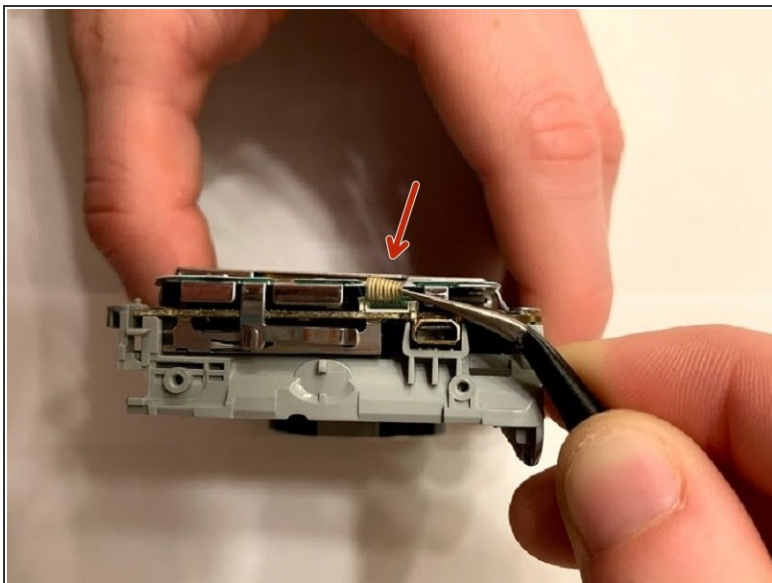
- Use a #00 screwdriver to remove all six screws holding the camera case together.

Step 2



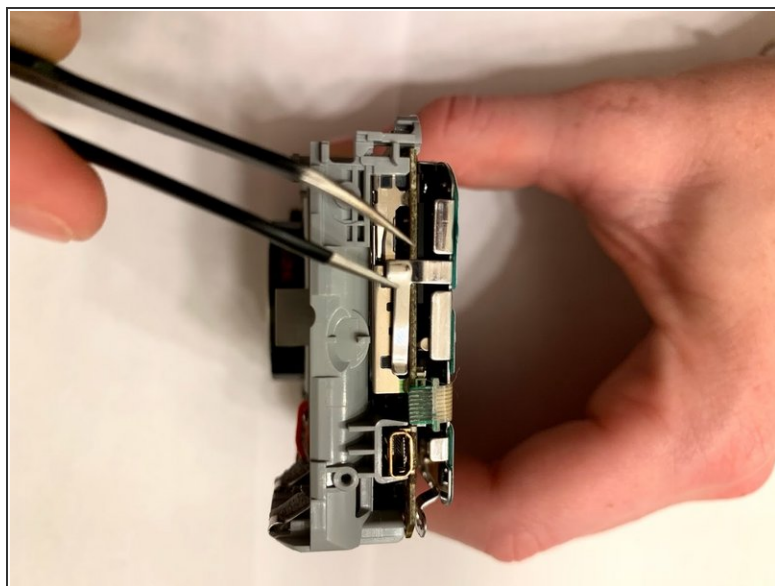
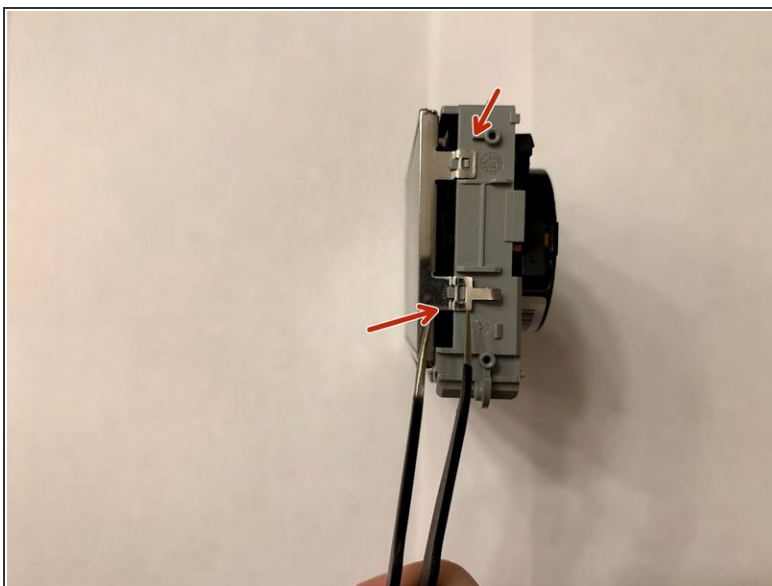
- Use a plastic pick to separate the two sections of the camera.

Step 3



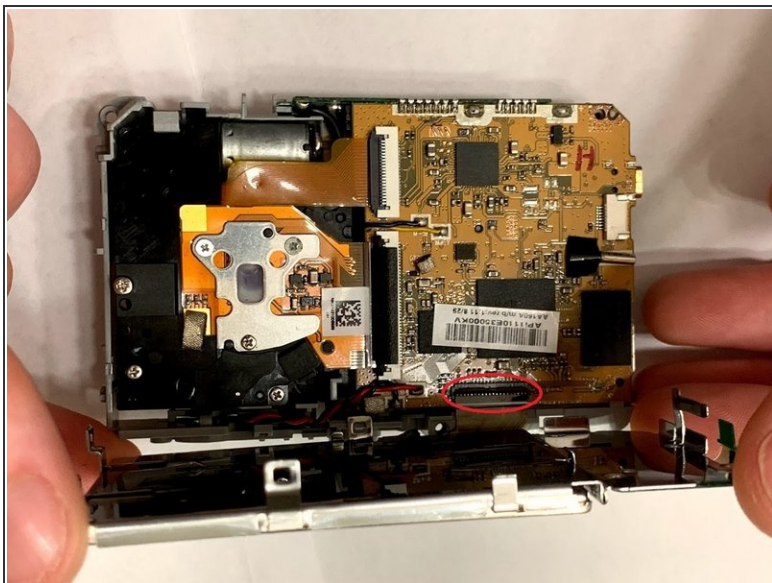
- Remove the ribbon cable from the side of logic board.

Step 4



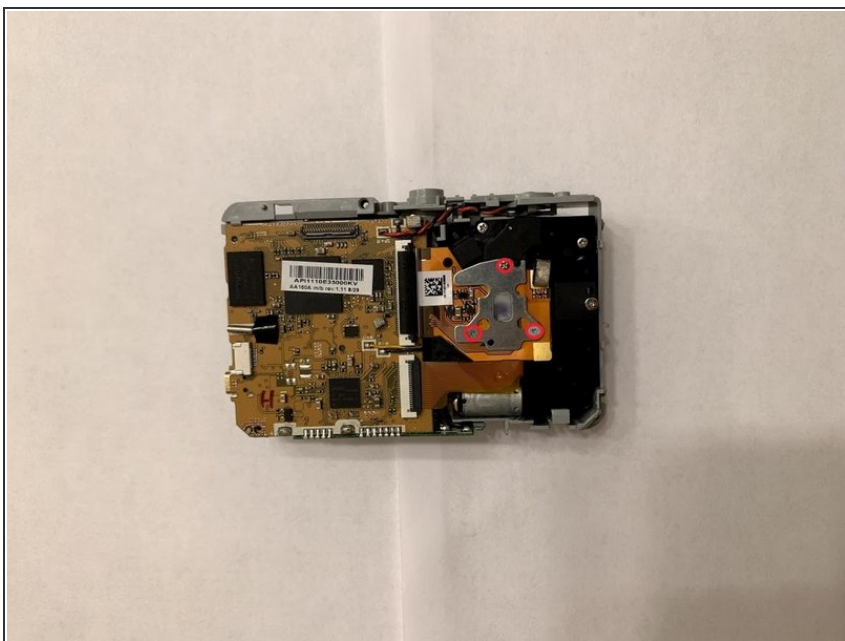
- Remove the four metal clips around the camera until you can feel the metal bracket that holds the screen pop off.

Step 5



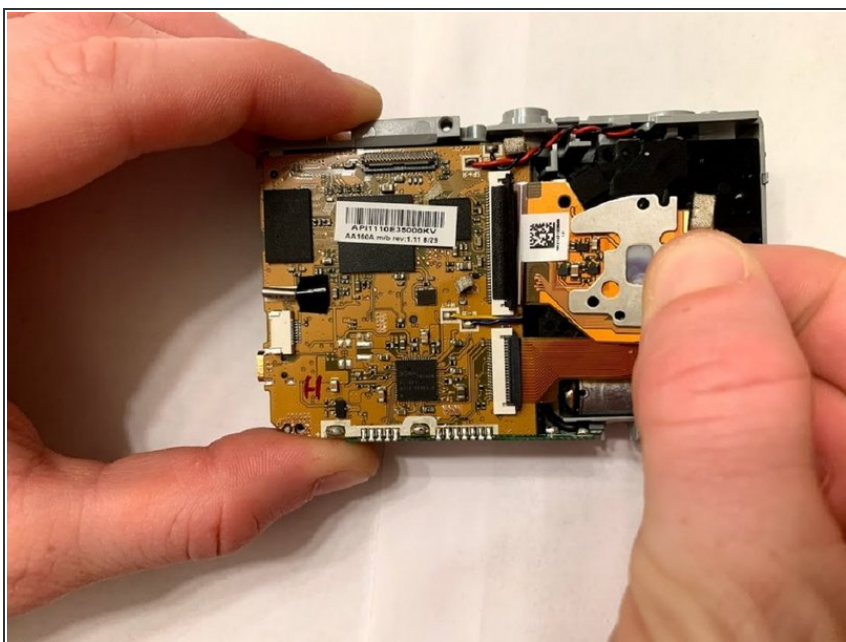
- Carefully flip the screen and remove the ribbon cable attaching it to the logic board.

Step 6



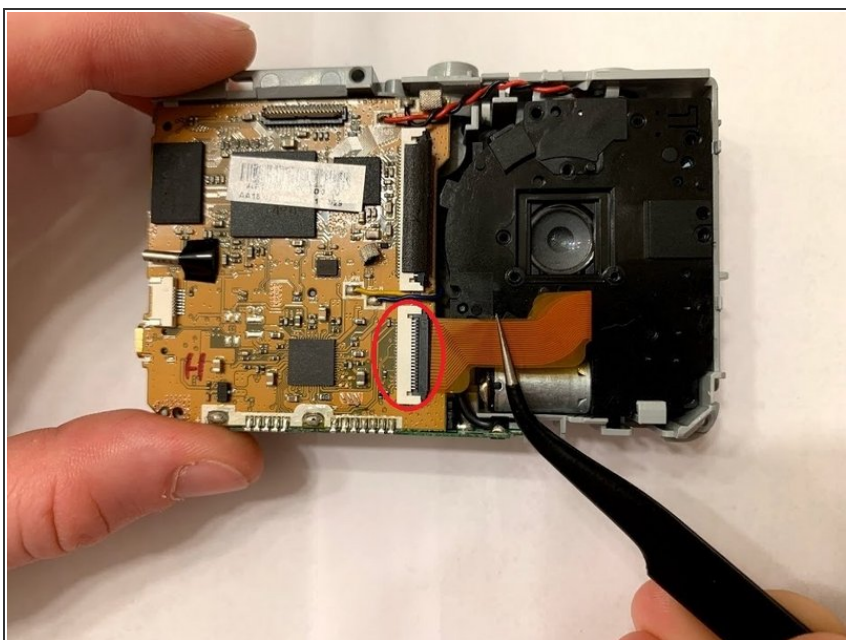
- Remove the three screws holding the sensor.

Step 7



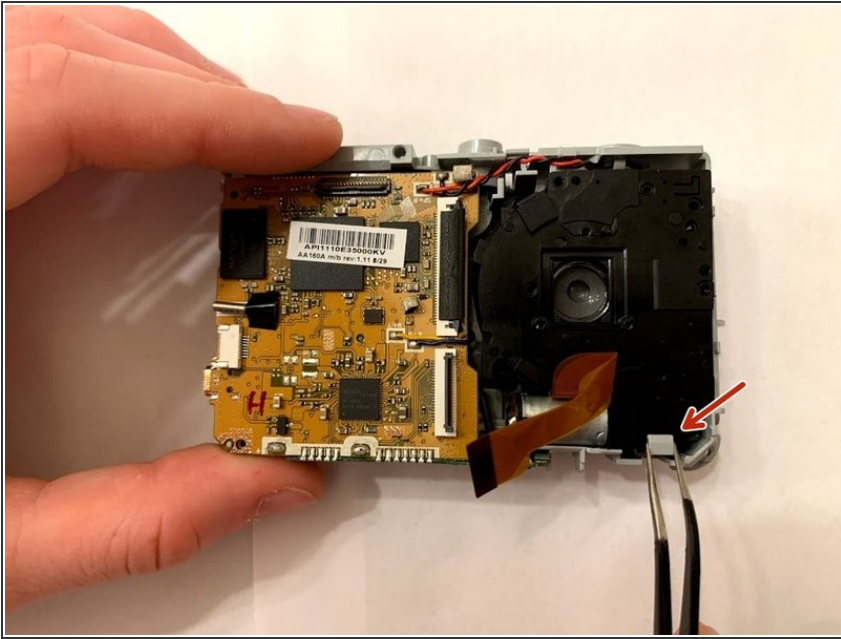
- Remove the sensor ribbon cable from the logic board.

Step 8



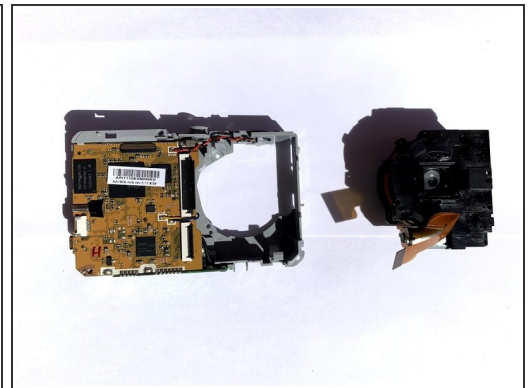
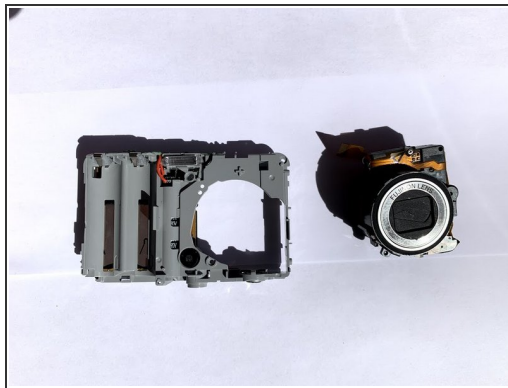
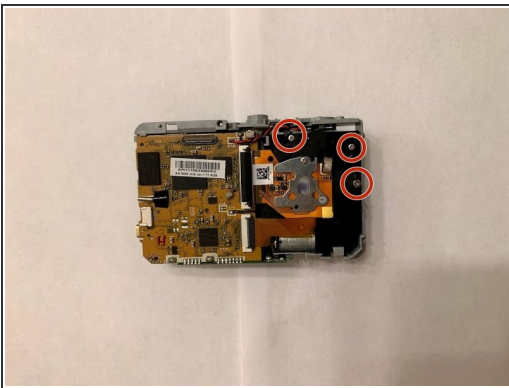
- Remove the lens housing ribbon cable.

Step 9



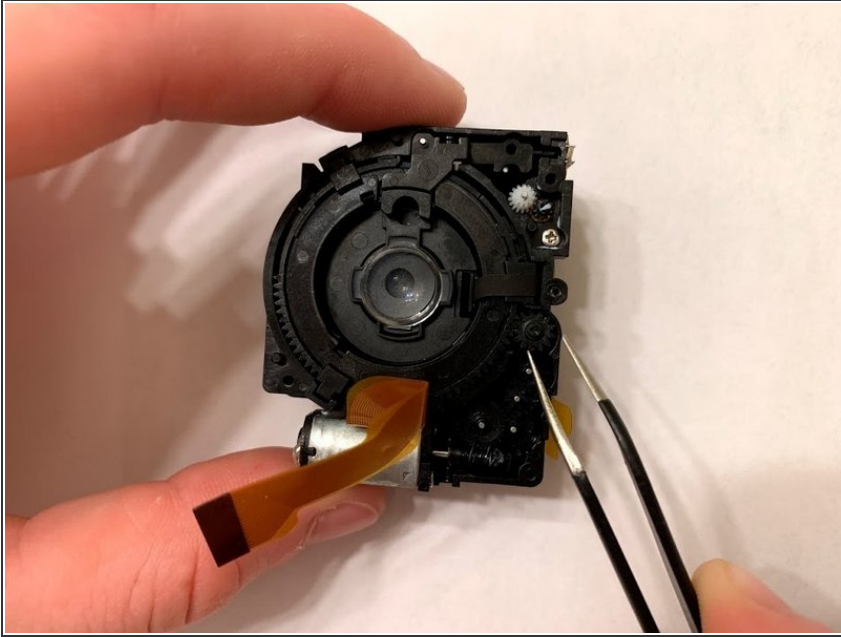
- Remove the lens housing by moving the gray clip holding the unit.

Step 10



- Remove the three screws holding the cover of the lens housing.
- Carefully remove the lens housing top cover.

Step 11



- Inspect all the gears and make sure they are functioning correctly.
- Replace the gears as needed.

To reassemble your device, follow these instructions in reverse order.