



# Fujifilm FinePix F505EXR Battery Replacement

This guide will show how to replace the battery if it fails.

Written By: Matthew Kilmonis

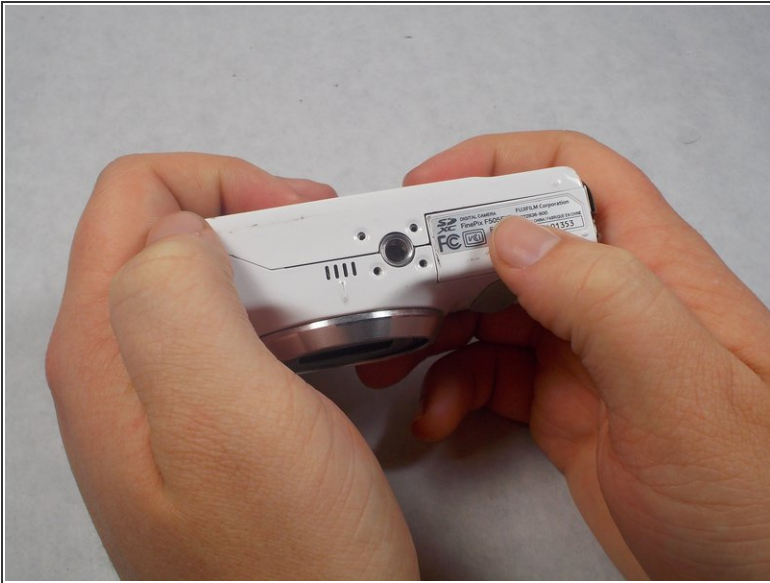




## PARTS:

- [Fujifilm Lithium Ion Battery Pack NP-50](#) (1)

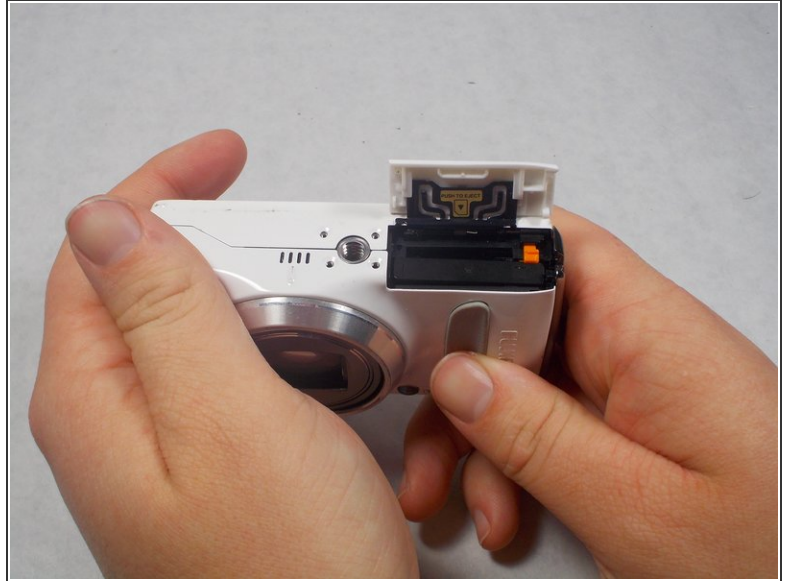
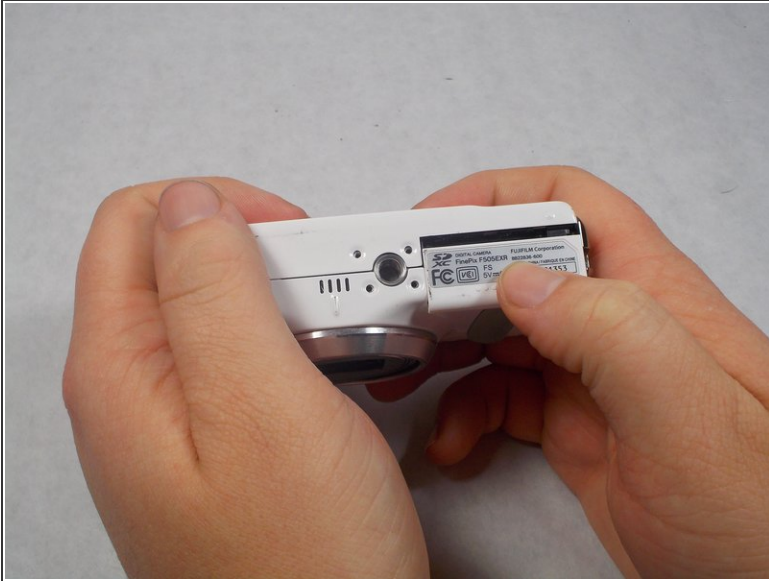
## Step 1 — Battery



 Make sure to power the device down before taking any other actions.

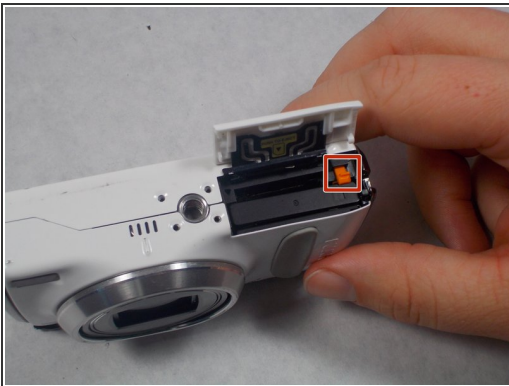
- Hold the camera upside down with your right thumb on the battery chamber cover.
- The lens should be facing your body.

## Step 2




- While holding the camera, pull the battery chamber cover towards your body with your right thumb.
- Once you pull the cover all the way out release it, this will reveal the battery.

## Step 3



- There is an orange battery latch that holds the battery down in place, with your finger push that latch away from you and this will release the battery.
- Once the battery is released grab the battery with your right thumb and pointer finger and remove it from the battery chamber, try putting it on a charger, if that is not the problem then a replacement battery is necessary.

 The battery should be removed before performing any other repairs.



To reassemble your device, follow these instructions in reverse order.