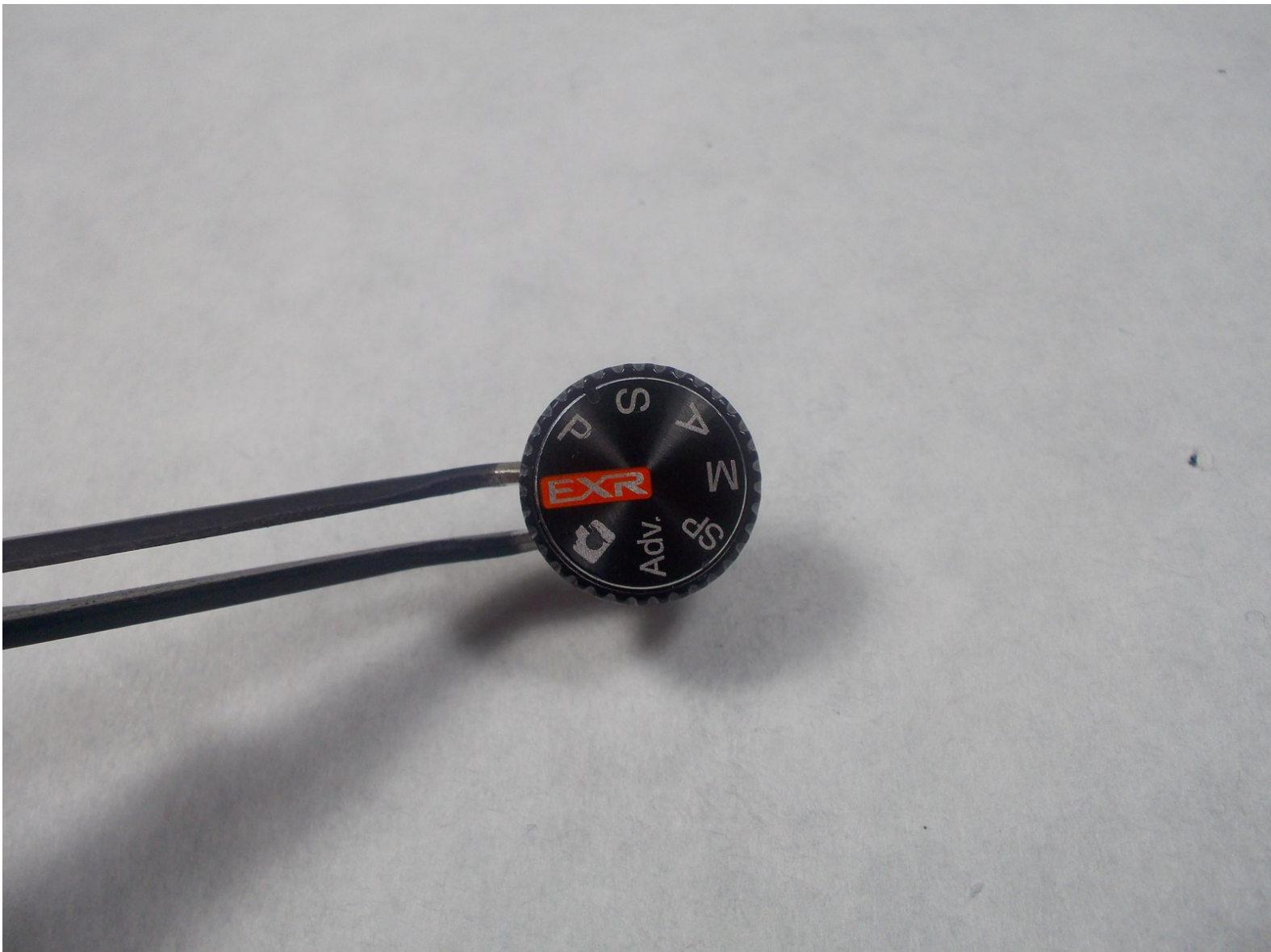




# Fujifilm FinePix F505EXR Mode Dial Replacement

With a mode dial replacement, the camera will be able to change modes again and the dial will be able to spin without any problems.

Written By: Brittany Perkins



---

## INTRODUCTION

This guide will show you how to replace the Mode Dial on the camera if it has stopped working or if it is stuck and will not move.

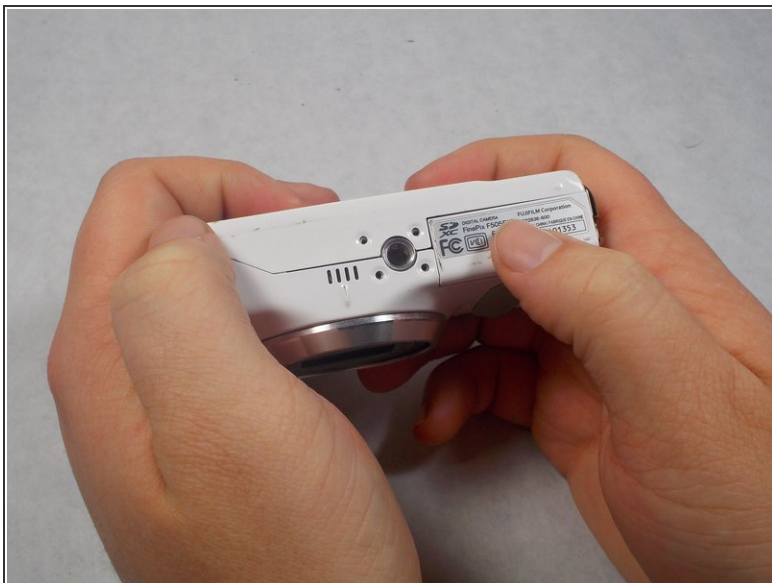
---




### TOOLS:

- [Phillips #1 Screwdriver](#) (1)
  - [Tweezers](#) (1)
-

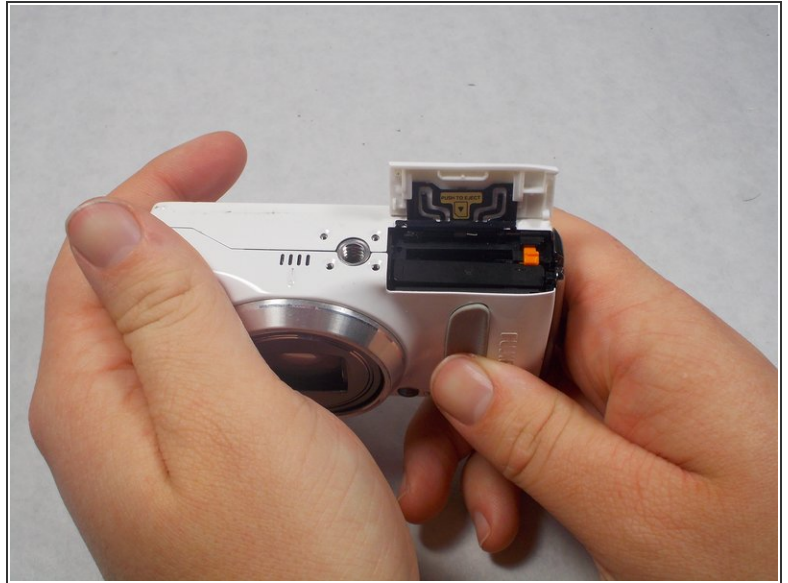
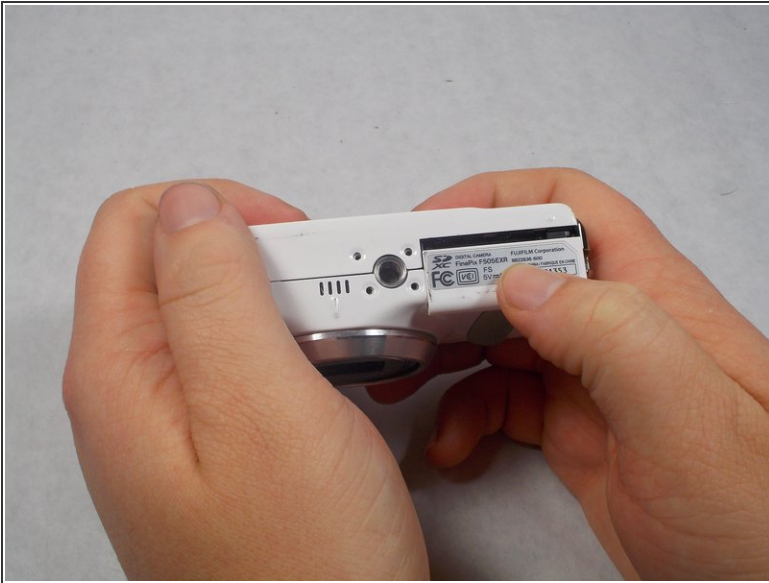
## Step 1 — Battery



 Make sure to power the device down before taking any other actions.

- Hold the camera upside down with your right thumb on the battery chamber cover.
- The lens should be facing your body.

## Step 2




- While holding the camera, pull the battery chamber cover towards your body with your right thumb.
- Once you pull the cover all the way out release it, this will reveal the battery.

## Step 3



- There is an orange battery latch that holds the battery down in place, with your finger push that latch away from you and this will release the battery.
- Once the battery is released grab the battery with your right thumb and pointer finger and remove it from the battery chamber, try putting it on a charger, if that is not the problem then a replacement battery is necessary.

 The battery should be removed before performing any other repairs.

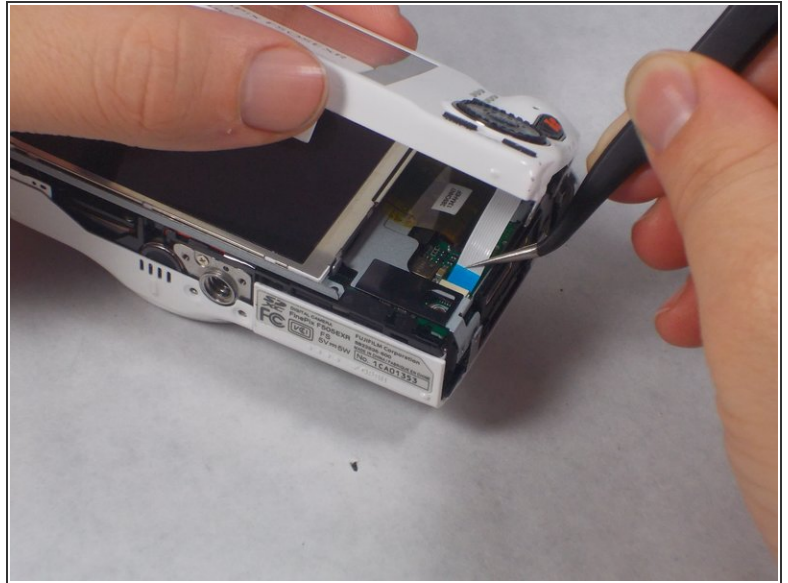


## Step 4 — Selector Button Circuit Board



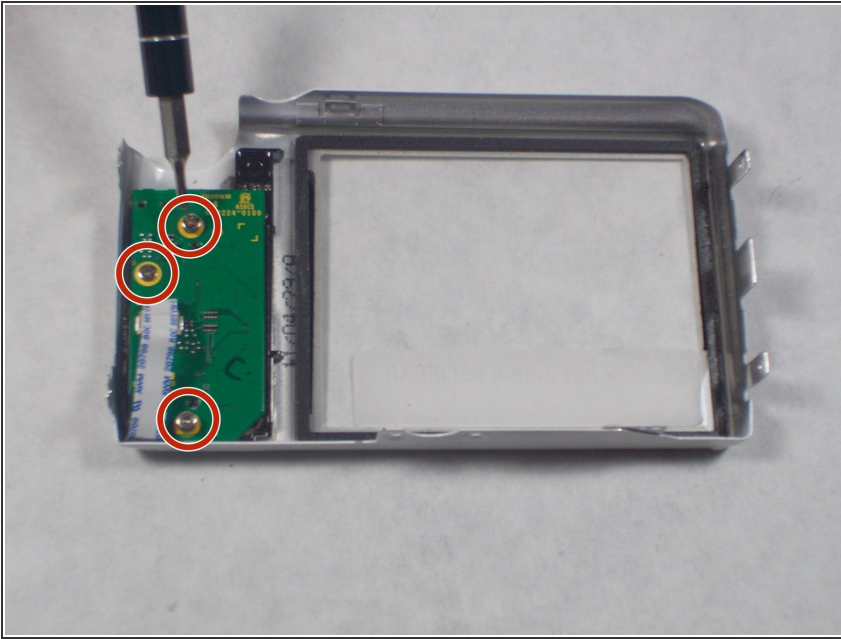
- Remove four 2.5mm Phillips #1 screws on the bottom of the camera near where the camera mount attaches.
- Remove two 5.1mm Phillips #1 screws on the left side of the camera relative to the LCD screen.
- Remove two 5.1mm Phillips #1 screws on the right side of the camera relative to the LCD screen nearest to the mode wheel.

## Step 5



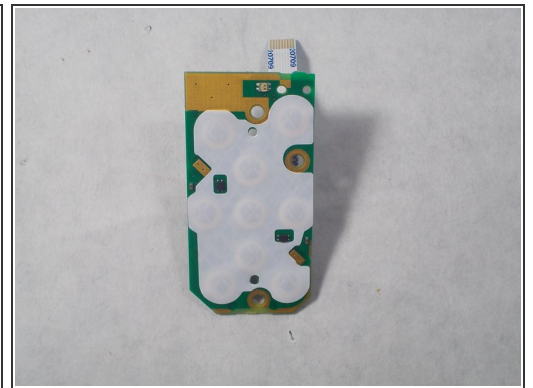
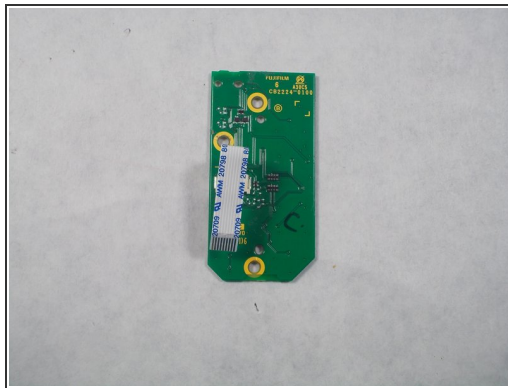
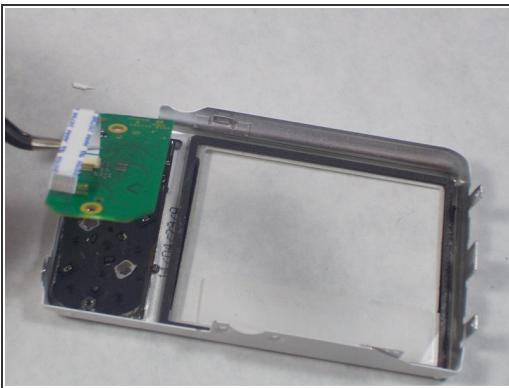
- Place the camera lens face down with the LCD screen face up on a flat surface, or hold it. Carefully lift the camera's back cover approximately 1 inch.
- Carefully lift the ribbon clamp connector back using the tweezers and remove the blue ribbon.
- ⚠ Do **NOT** pull on ribbon if the ribbon clamp connector still grasps the blue ribbon. This could cause severe damage to the ribbon.
- ℹ If you are replacing the LCD monitor you can skip steps 6 and 7 for the selector button circuit board guide and go directly to the LCD monitor repair guide.
- ℹ If you are replacing the Mode Dial you can skip steps 6 and 7 for the selector button circuit board guide and go directly to the Mode Dial repair guide.

## Step 6



- ❗ Remove the back of the camera case and place it on a flat surface with the selector button circuit board facing up.
- Remove the three 3.5mm Phillips #1 screws located on the chip seen in the image.

## Step 7



- Lift the chip with tweezers to remove it from the other remaining components.



## Step 8 — Mode Dial



- Remove the 5mm Phillips #1 screw at the top of the camera.

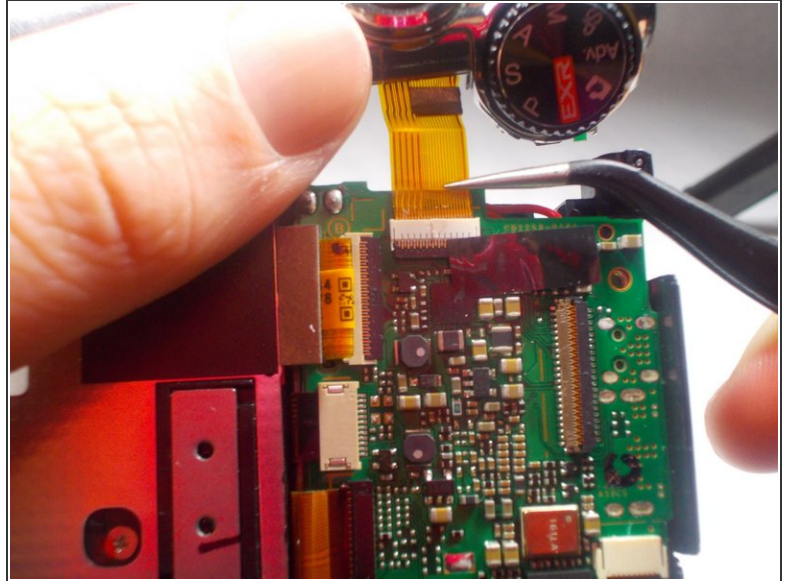
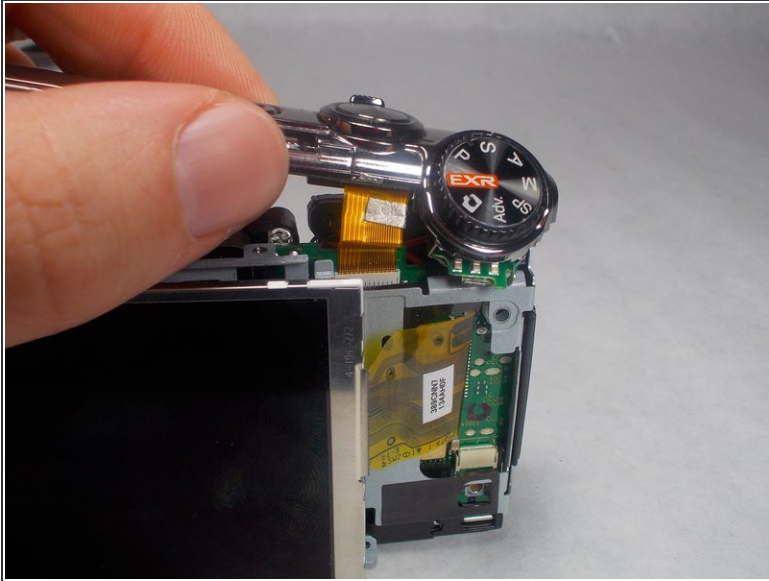
## Step 9



- With the the camera on a flat surface with the LCD monitor on the surface, lift the front panel of the camera gently up.

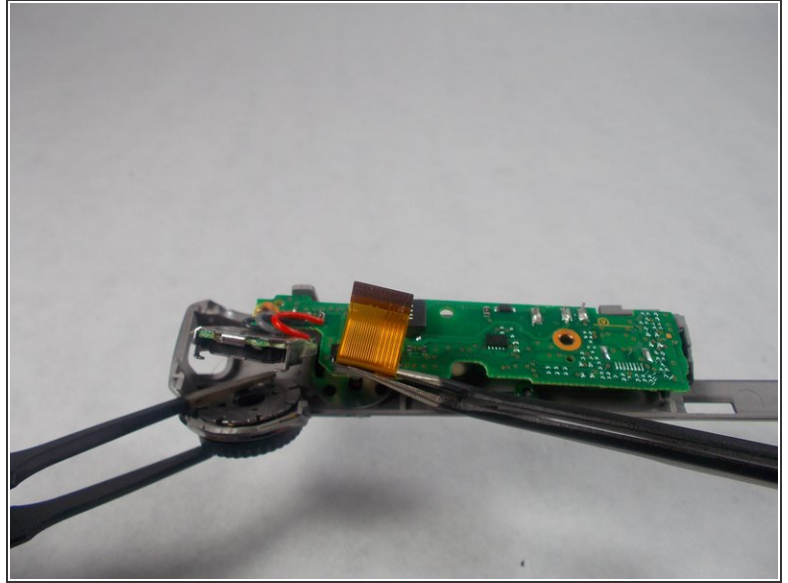
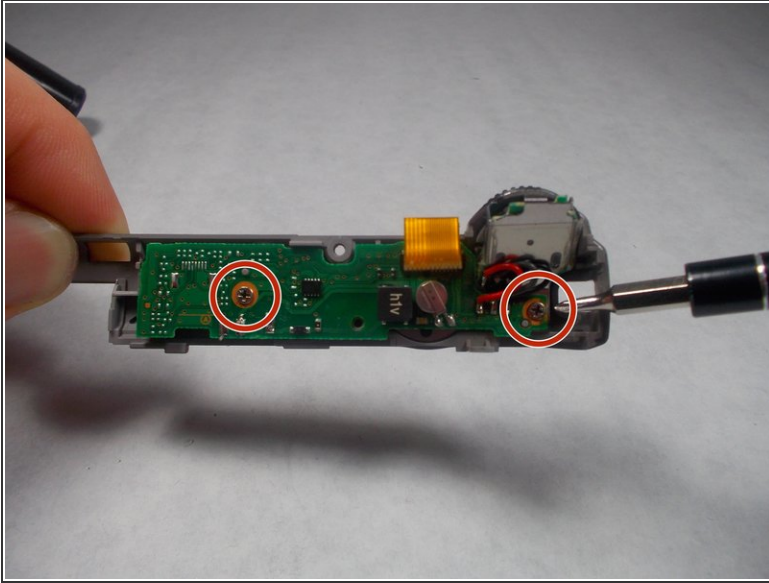


## Step 10



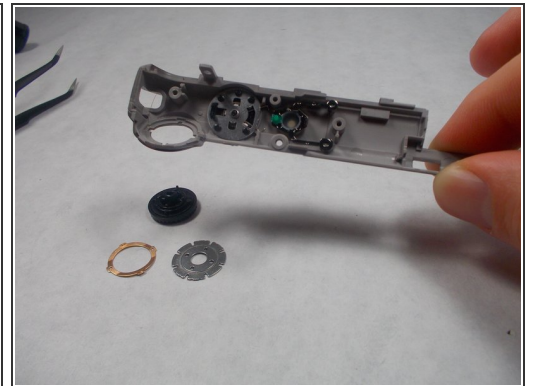
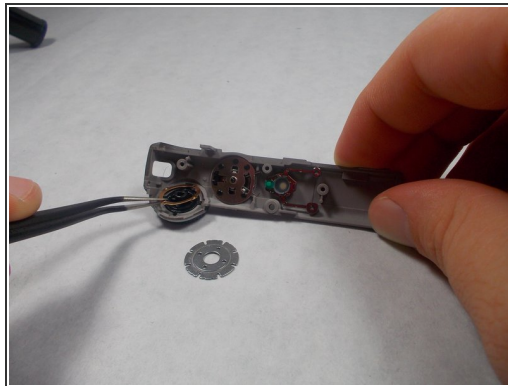
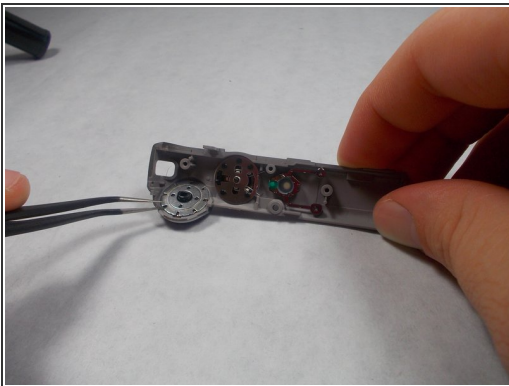
- Hold the camera like you are going to take a picture, and the top bar should be able to separate from the camera a little bit.
- ⚠ Do NOT pull until the top bar comes completely apart from the camera, this can cause serious damage to the camera.
- With the tweezers remove the ribbon cable from its clip to completely separate the top bar from the camera.

## Step 11



- Flip the top bar over and remove the two 3.2 mm Phillips #1 screws to release the circuit board.
- With the tweezers remove the circuit board to expose the Mode Dial configuration.

## Step 12



- With the tweezers remove the chrome circle piece.
- Next, remove the gold circle piece, this will allow you to pick up the top bar and release the Mode Dial.

To reassemble your device, follow these instructions in reverse order.