



Fujifilm FinePix F505EXR Selector Button Circuit Board Replacement

This guide shows how to replace a malfunctioning circuit board for the selector button that allows you to navigate the menu or delete pictures.

Written By: Matthew Kilmonis



INTRODUCTION

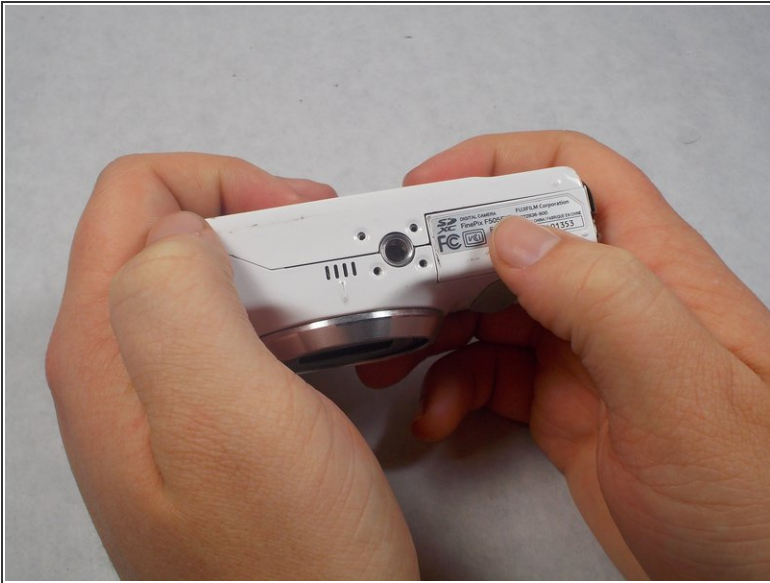
During this guide you will learn how to get to the inner components of the camera and how to remove the button circuit board.




TOOLS:

- [Tweezers](#) (1)
 - [Phillips #1 Screwdriver](#) (1)
-

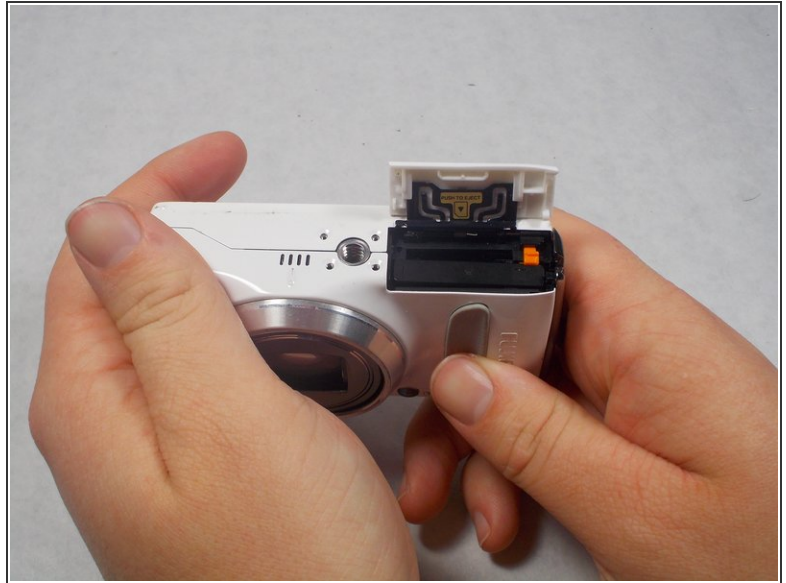
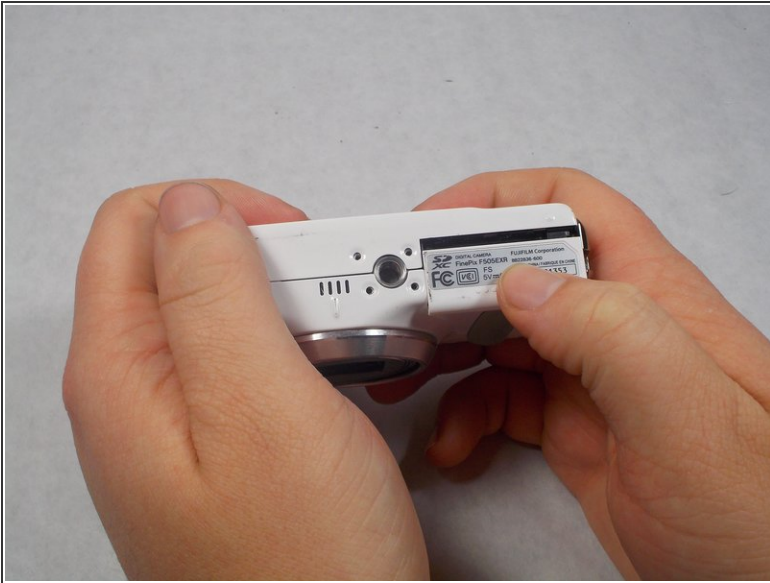
Step 1 — Battery



 Make sure to power the device down before taking any other actions.

- Hold the camera upside down with your right thumb on the battery chamber cover.
- The lens should be facing your body.

Step 2




- While holding the camera, pull the battery chamber cover towards your body with your right thumb.
- Once you pull the cover all the way out release it, this will reveal the battery.

Step 3



- There is an orange battery latch that holds the battery down in place, with your finger push that latch away from you and this will release the battery.
- Once the battery is released grab the battery with your right thumb and pointer finger and remove it from the battery chamber, try putting it on a charger, if that is not the problem then a replacement battery is necessary.

 The battery should be removed before performing any other repairs.

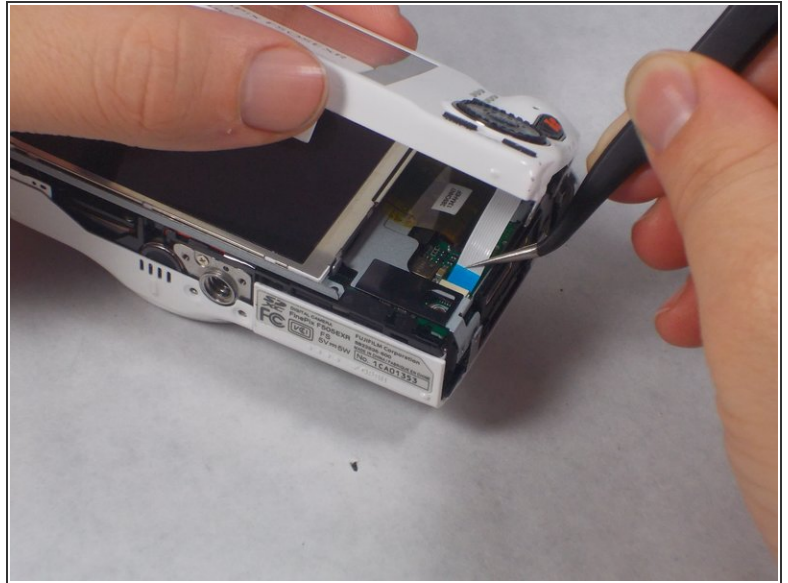
This document was generated on 2019-10-28 10:03:05 AM (MST).

Step 4 — Selector Button Circuit Board



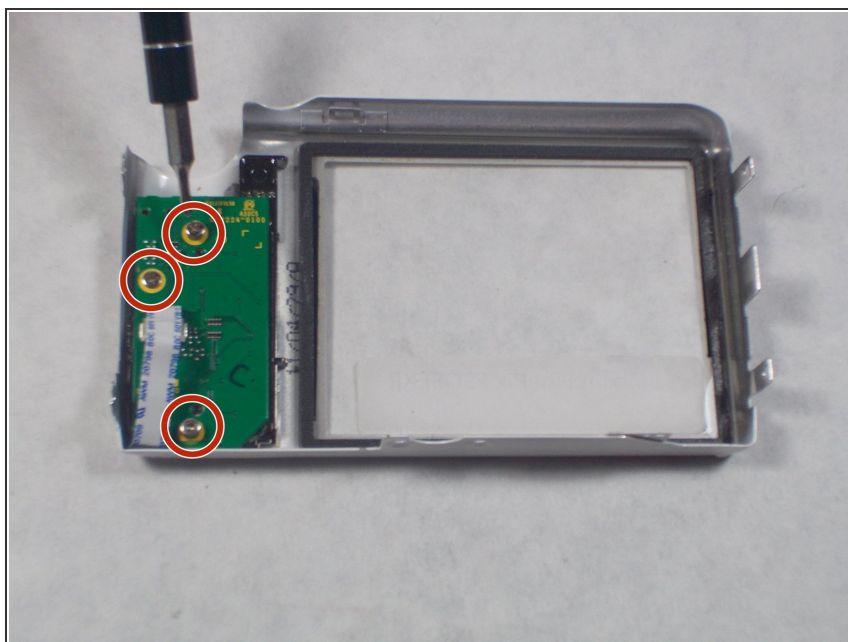
- Remove four 2.5mm Phillips #1 screws on the bottom of the camera near where the camera mount attaches.
- Remove two 5.1mm Phillips #1 screws on the left side of the camera relative to the LCD screen.
- Remove two 5.1mm Phillips #1 screws on the right side of the camera relative to the LCD screen nearest to the mode wheel.

Step 5



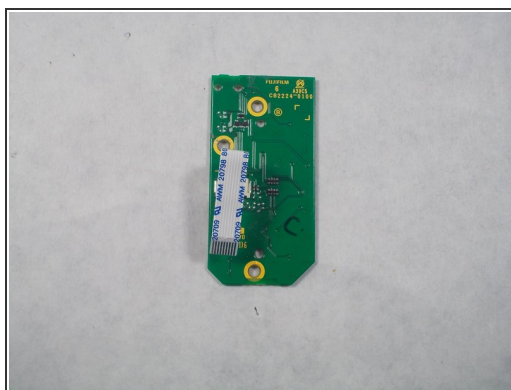
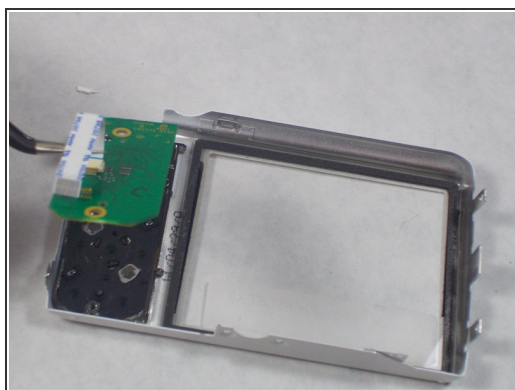
- Place the camera lens face down with the LCD screen face up on a flat surface, or hold it. Carefully lift the camera's back cover approximately 1 inch.
- Carefully lift the ribbon clamp connector back using the tweezers and remove the blue ribbon.
- ⚠ Do **NOT** pull on ribbon if the ribbon clamp connector still grasps the blue ribbon. This could cause severe damage to the ribbon.
- ℹ If you are replacing the LCD monitor you can skip steps 6 and 7 for the selector button circuit board guide and go directly to the LCD monitor repair guide.
- ℹ If you are replacing the Mode Dial you can skip steps 6 and 7 for the selector button circuit board guide and go directly to the Mode Dial repair guide.

Step 6



- i Remove the back of the camera case and place it on a flat surface with the selector button circuit board facing up.
- Remove the three 3.5mm Phillips #1 screws located on the chip seen in the image.

Step 7



- Lift the chip with tweezers to remove it from the other remaining components.

To reassemble your device, follow these instructions in reverse order.