



# Fujifilm FinePix F505EXR Selector Button Replacement

With this guide, a reader will be able to replace a selector button that does not respond when being used or simply does not turn.

Written By: Brittany Perkins



## INTRODUCTION

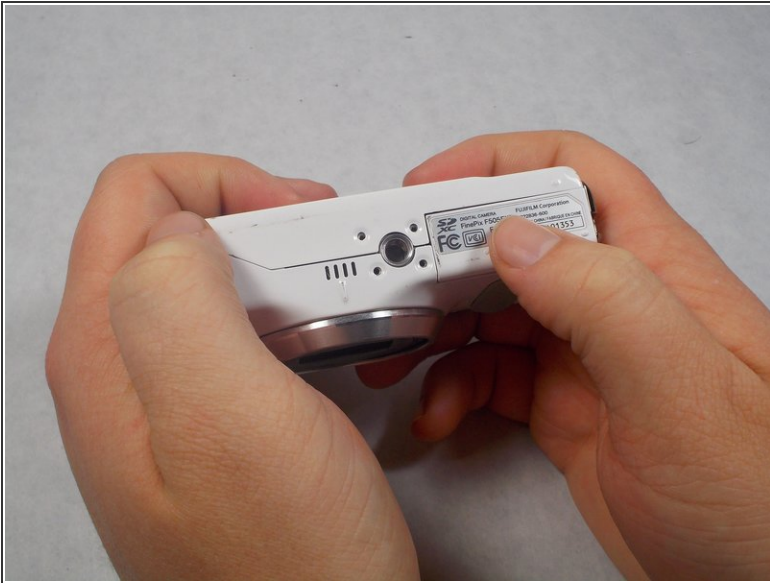
In this guide, readers will be taught how to take apart the Fujifilm Finepix F505EXR camera with a Philips head screwdriver and reach the selector button. It will then be shown on how to take out and replace the selector button. The selector button is used to select various tasks on the camera including deleting pictures. If this feature does not work it may be hard to clear up storage.



### TOOLS:

- [Phillips #1 Screwdriver](#) (1)
- [Tweezers](#) (1)

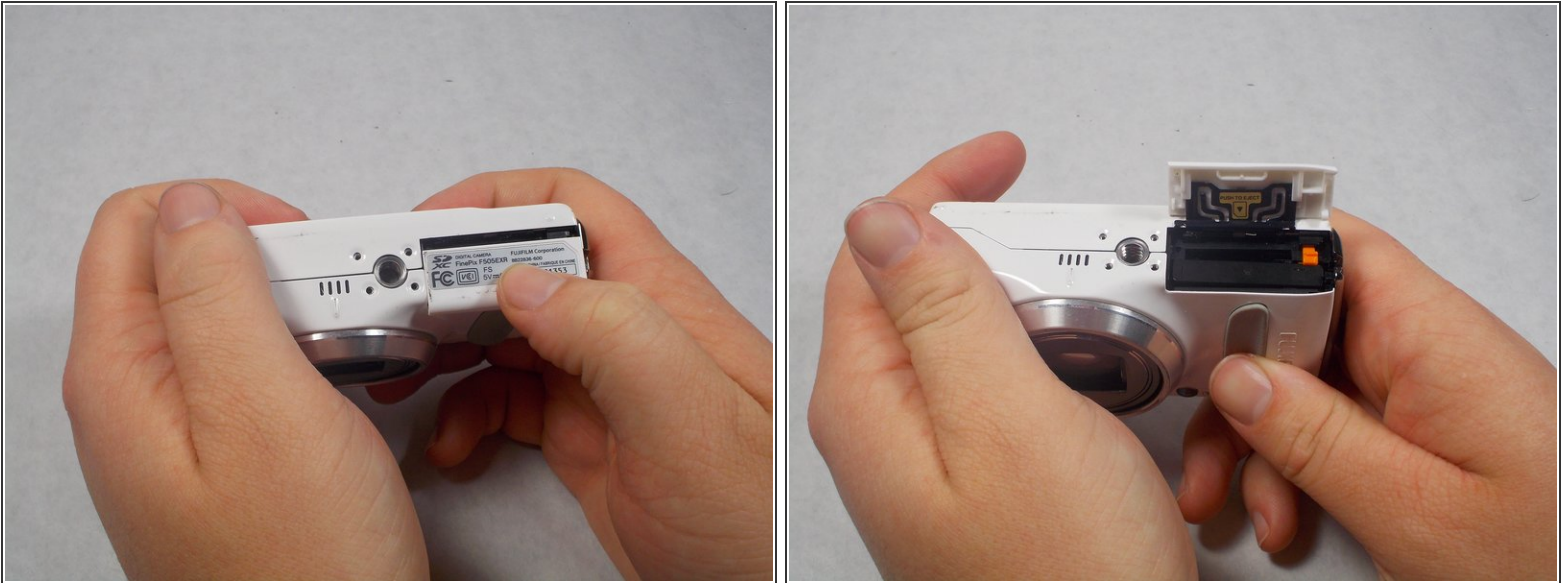
## Step 1 — Battery



 Make sure to power the device down before taking any other actions.

- Hold the camera upside down with your right thumb on the battery chamber cover.
- The lens should be facing your body.

## Step 2




- While holding the camera, pull the battery chamber cover towards your body with your right thumb.
- Once you pull the cover all the way out release it, this will reveal the battery.

## Step 3



- There is an orange battery latch that holds the battery down in place, with your finger push that latch away from you and this will release the battery.
- Once the battery is released grab the battery with your right thumb and pointer finger and remove it from the battery chamber, try putting it on a charger, if that is not the problem then a replacement battery is necessary.

 The battery should be removed before performing any other repairs.

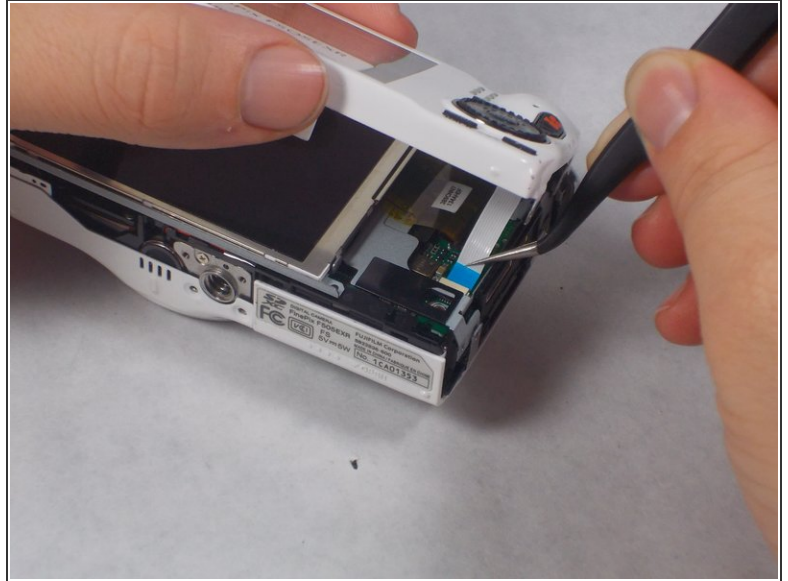


## Step 4 — Selector Button Circuit Board



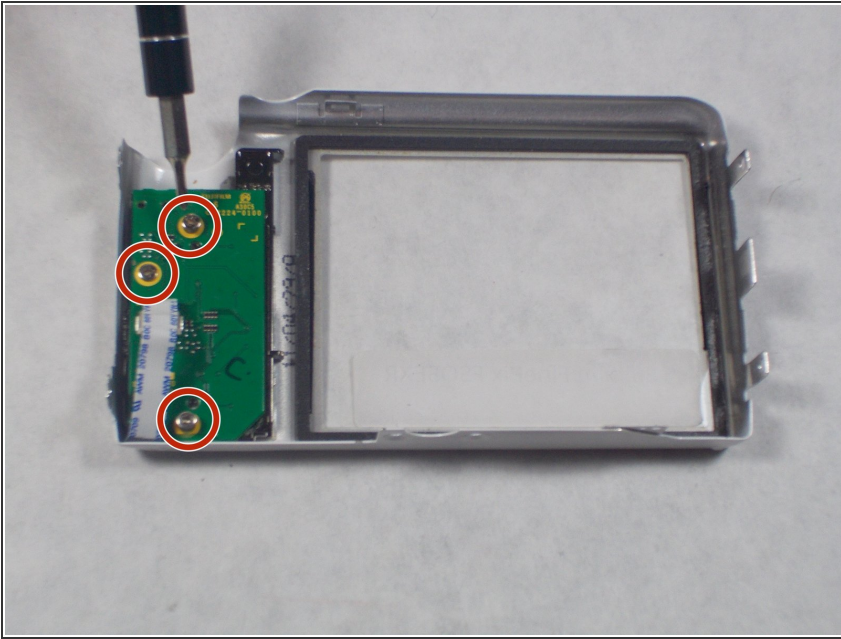
- Remove four 2.5mm Phillips #1 screws on the bottom of the camera near where the camera mount attaches.
- Remove two 5.1mm Phillips #1 screws on the left side of the camera relative to the LCD screen.
- Remove two 5.1mm Phillips #1 screws on the right side of the camera relative to the LCD screen nearest to the mode wheel.

## Step 5



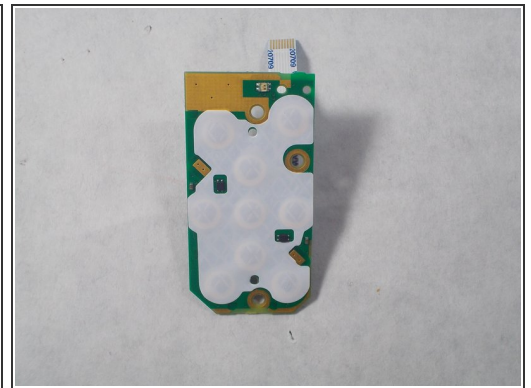
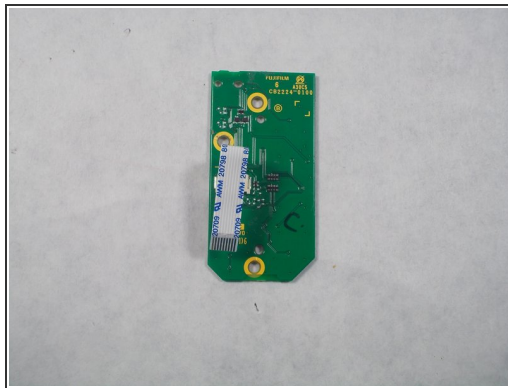
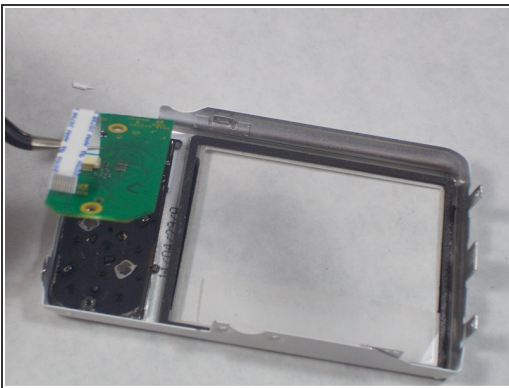
- Place the camera lens face down with the LCD screen face up on a flat surface, or hold it. Carefully lift the camera's back cover approximately 1 inch.
- Carefully lift the ribbon clamp connector back using the tweezers and remove the blue ribbon.
- ⚠ Do **NOT** pull on ribbon if the ribbon clamp connector still grasps the blue ribbon. This could cause severe damage to the ribbon.
- ℹ If you are replacing the LCD monitor you can skip steps 6 and 7 for the selector button circuit board guide and go directly to the LCD monitor repair guide.
- ℹ If you are replacing the Mode Dial you can skip steps 6 and 7 for the selector button circuit board guide and go directly to the Mode Dial repair guide.

## Step 6



- ❗ Remove the back of the camera case and place it on a flat surface with the selector button circuit board facing up.
- Remove the three 3.5mm Phillips #1 screws located on the chip seen in the image.

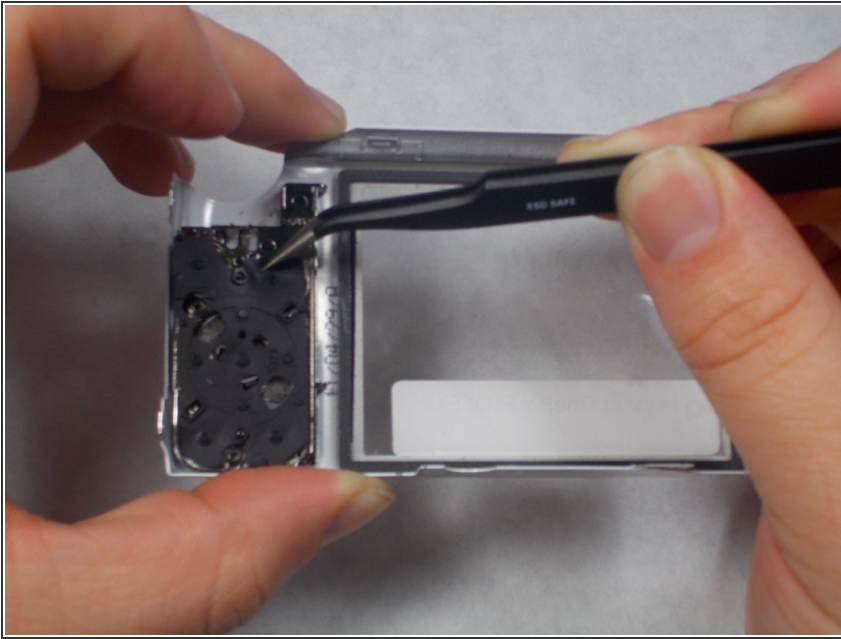
## Step 7



- Lift the chip with tweezers to remove it from the other remaining components.

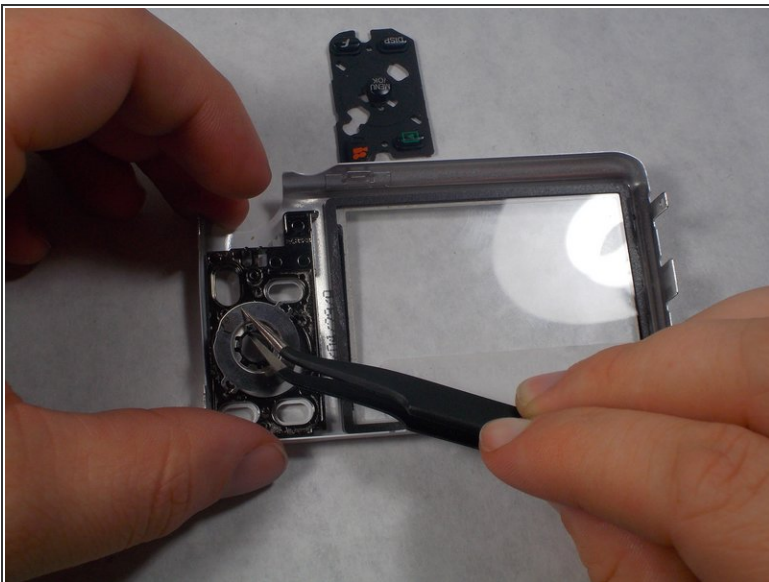


## Step 8 — Selector Button



- After the selector button circuit board is taken out. There will be a black rubber display for the front buttons, remove this.

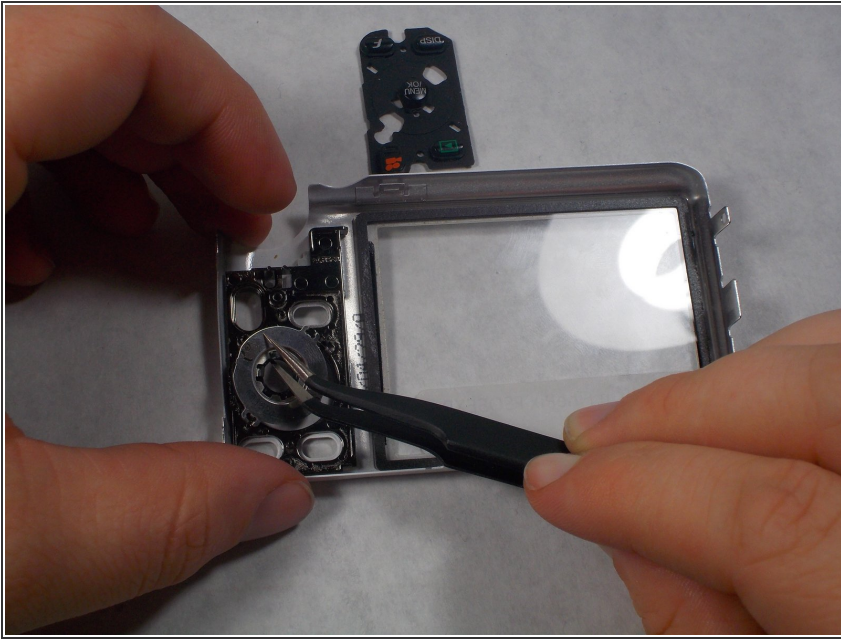
## Step 9



- After taking the rubber button selector out, there will still be a circular metal selector button. This is what makes the camera delete pictures and do various tasks. Remove this and set aside.



## Step 10



- Finally replace the selector button with the new replacement.

To reassemble your device, follow these instructions in reverse order.