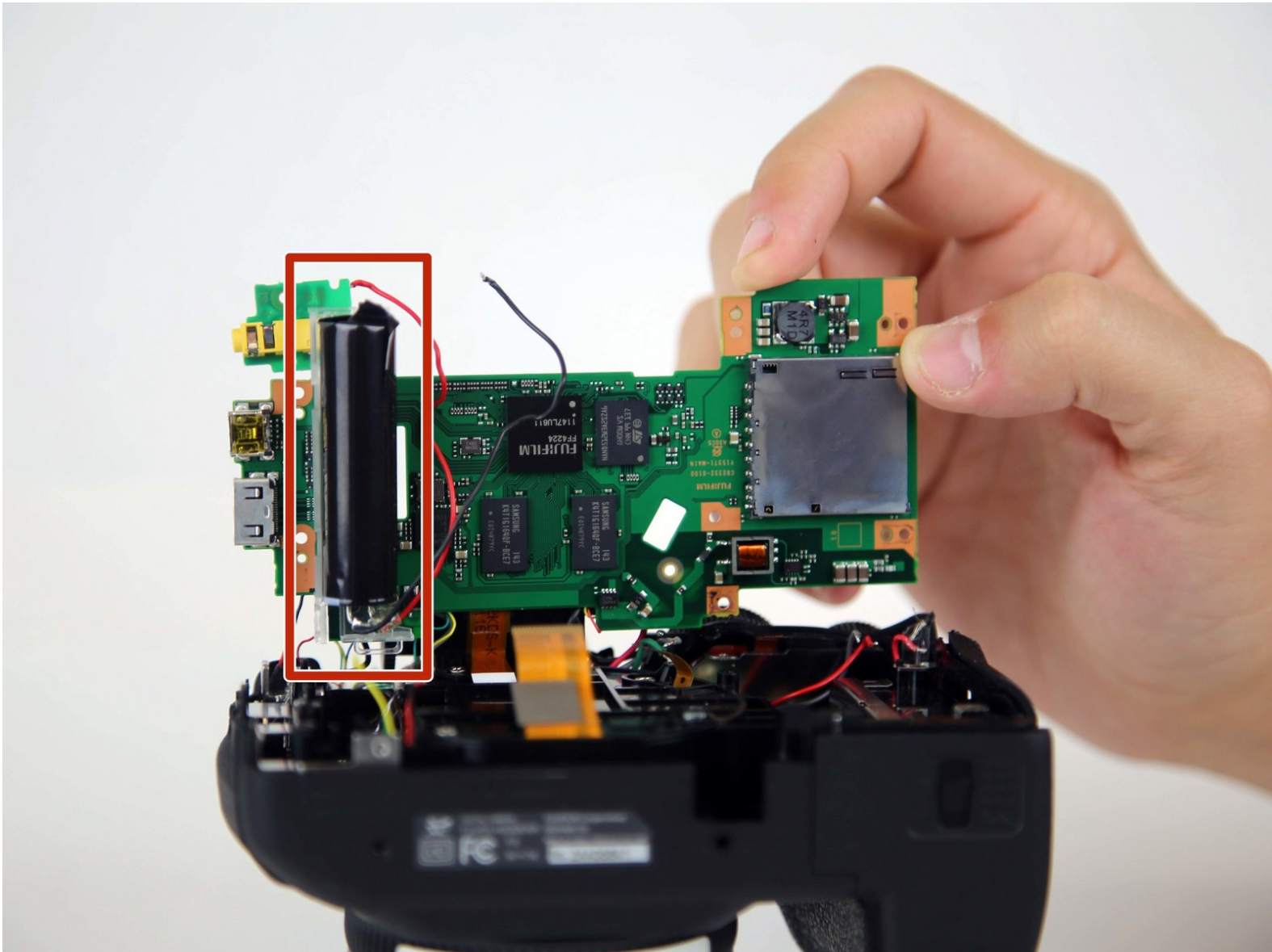




# Fujifilm FinePix HS30EXR Discharge Flash Replacement

How to replace a Fujifilm FinePix HS30EXR flash.

Written By: Haden Calvert



## INTRODUCTION

This guide serves to help the user replace the flash bulb.

Warning: The replacement of the flash bulb requires great care, as any force could damage the frame or any internal cables/wires that may be essential to the camera's function. To avoid damage, treat the frame with care when prying it off, and treat and wires or cables with care as well.



### TOOLS:

- [Phillips #00 Screwdriver](#) (1)
- [Metal Spudger](#) (1)
- [Soldering Iron](#) (1)
- [Super Glue](#) (1)



### PARTS:

- [Fujifilm Finepix HS30EXR Motherboard](#) (1)
- [Fujifilm Finepix HS30EXR Discharge Flash](#) (1)

## Step 1 — Frame



- Flip the camera so that it is now upside down.
- With a screwdriver, unscrew all highlighted screws.

## Step 2



- Flip the camera so that it is now on the right side.
- With a screwdriver, unscrew all highlighted screws.

### Step 3



- Flip the camera so that it is now on the left side.
- Move or remove the flap hiding the camera ports.
- With a screwdriver, unscrew all highlighted screws.

### Step 4



- Flip the camera so that it is now on the top side.
- With a spudger, pry off the highlighted metal piece of the camera.



## Step 5



- With a screwdriver, unscrew all highlighted screws.

## Step 6



- Pull the LCD Screen up and out of the way.
- With a screwdriver, unscrew all highlighted screws.

## Step 7



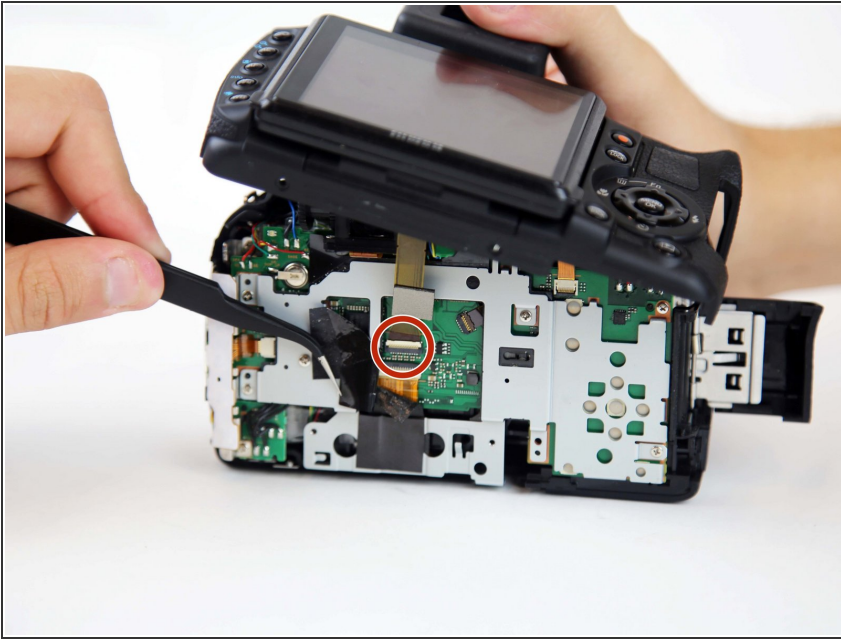
- With a spudger, pry off the frame.
- ❗ If the frame does not easily dislodge after a few attempts, ensure that all screws are taken out.

## Step 8 — Motherboard



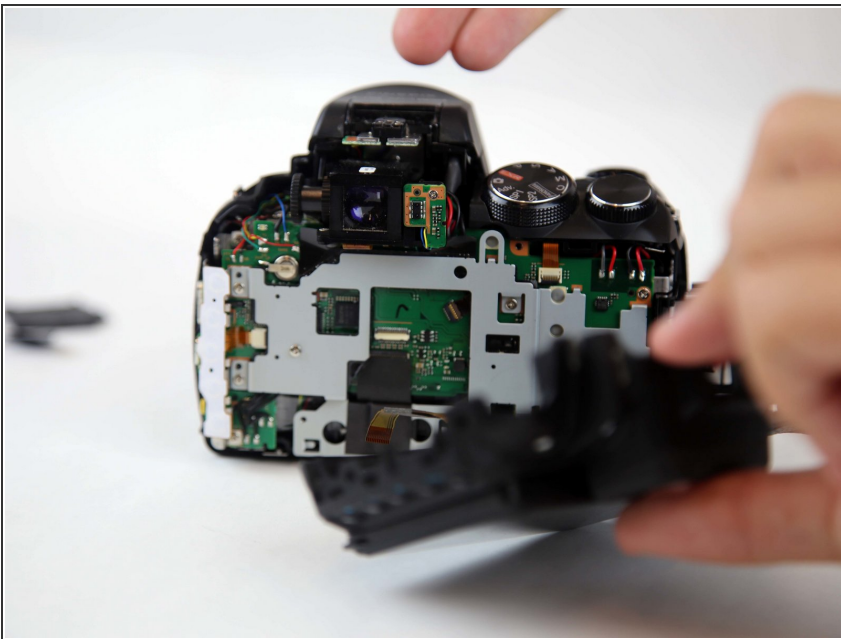
- Slowly and carefully pull the frame away to have a better view of the inside.

## Step 9



- Peel back (or off) the black tape to expose more of the inside of the camera.
- Flip the white switch of the highlighted chamber up, and that should unlock the ribbon cable from its compartment.
- To see if this worked, gently pull the ribbon cable out of the compartment. It should come out without force.

## Step 10



- Remove the ribbon cable.

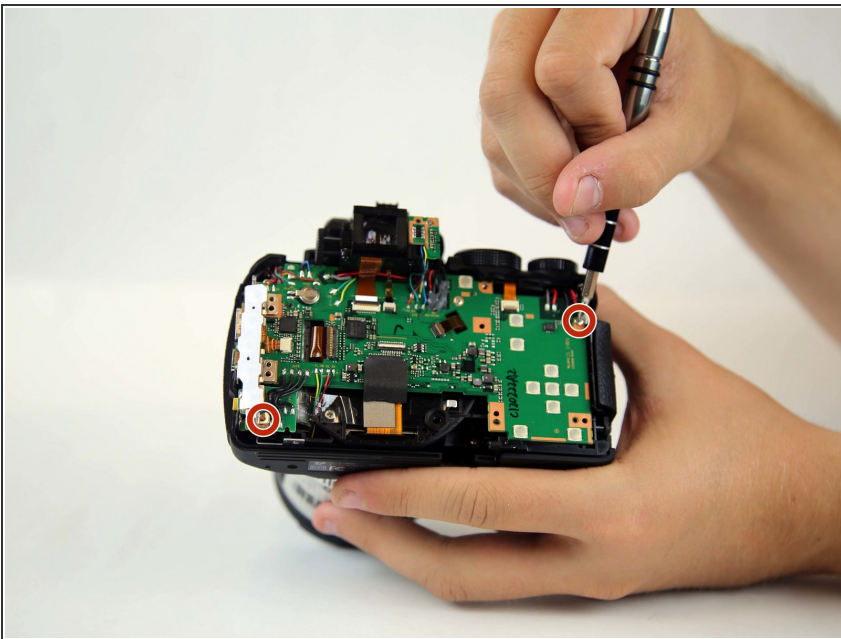


## Step 11



- With a screwdriver, unscrew all highlighted screws.
- Remove the metal casing.

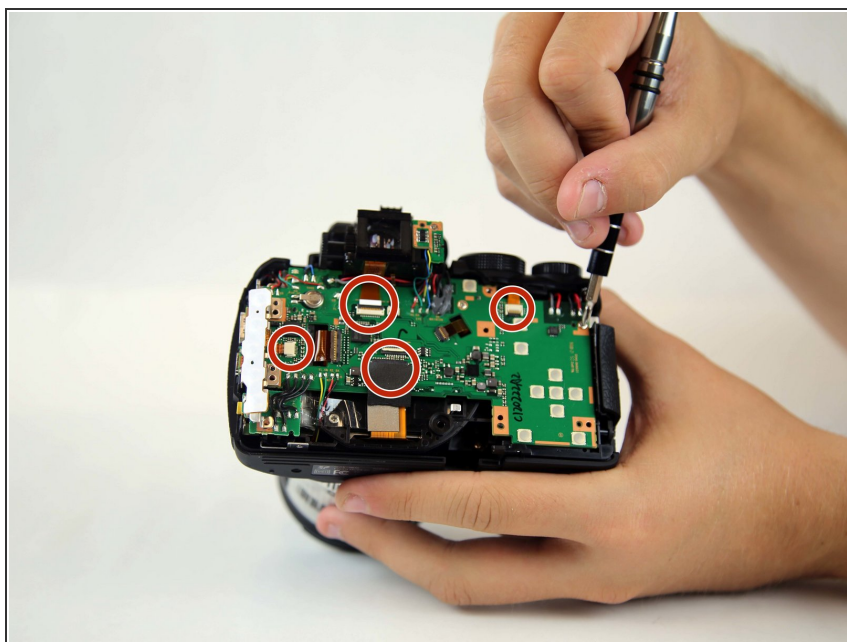
## Step 12



- With a screwdriver, unscrew all highlighted screws.

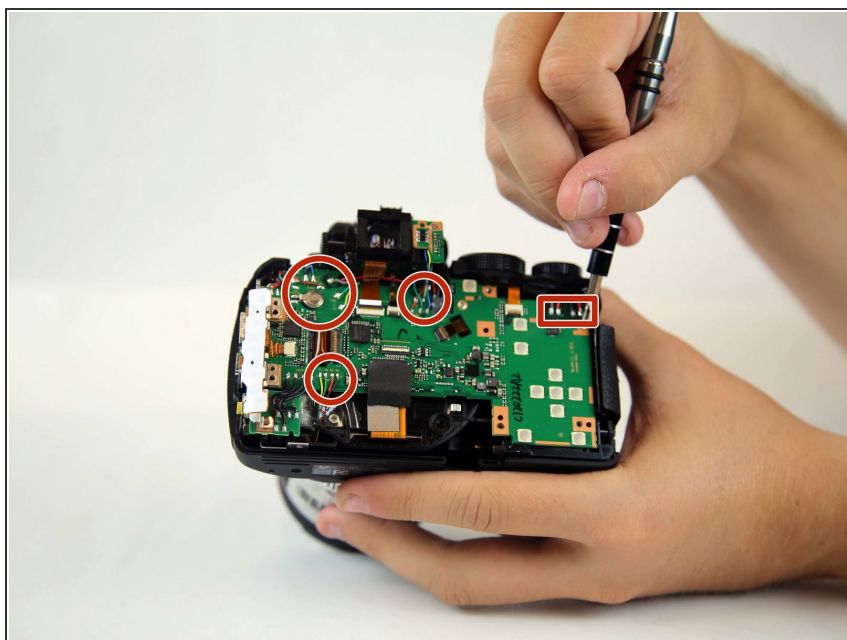


## Step 13



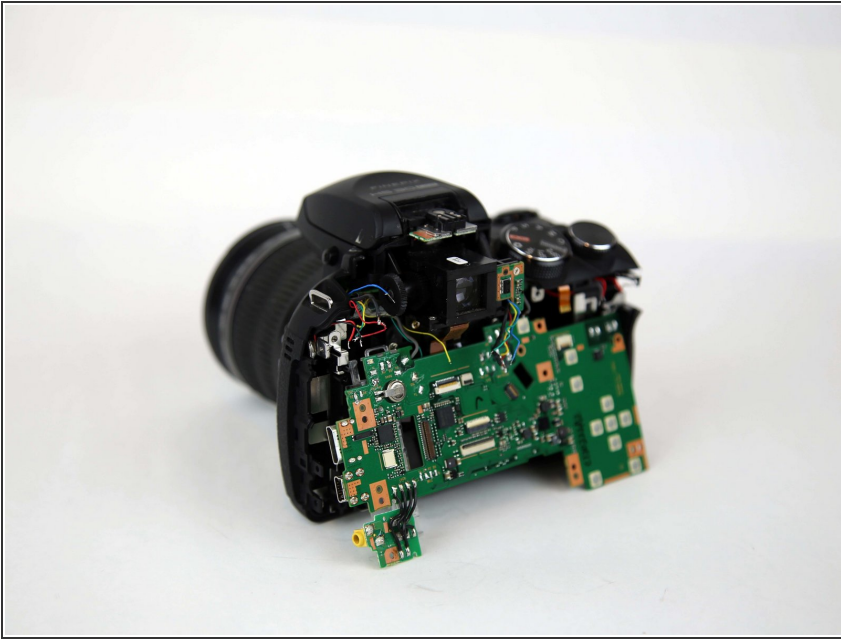
- Ensure the two ribbon cables highlighted are disconnected from the motherboard. (One is under the black tape.)

## Step 14



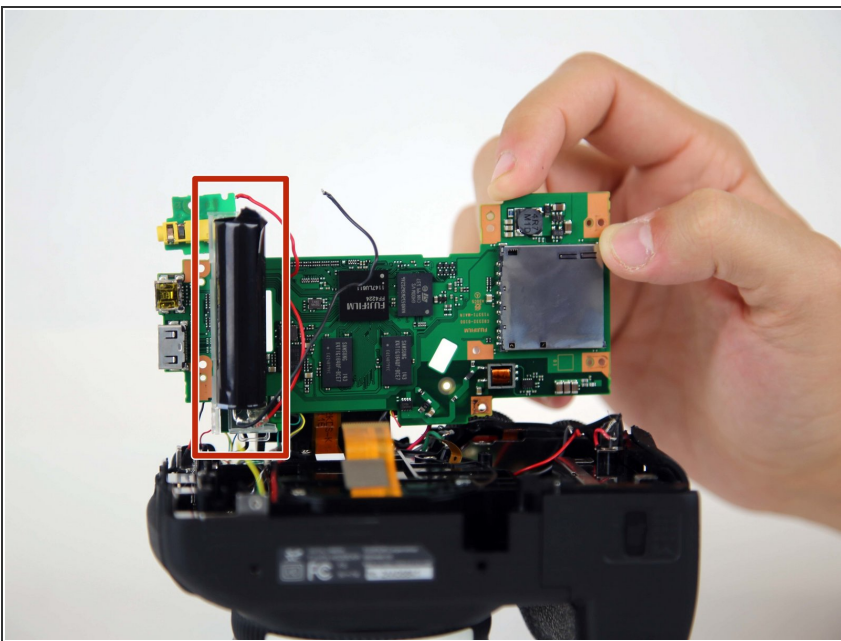
- Begin un-soldering all highlighted areas.

## Step 15



- Remove the motherboard
- If your intention is to replace the motherboard, put your new motherboard in and begin re-soldering all cables back to the new motherboard.

## Step 16 — Discharge Flash



- Remove the discharge flash by giving it a light tug. It is held in place with glue.
- Replace the old flash bulb with a new one, and begin the reconstruction of the device.

To reassemble your device, follow these instructions in reverse order.