



Fujifilm FinePix HS30EXR Lens Replacement

How to replace a Fujifilm FinePix HS30EXR lens.

Written By: Andrew Scouten



INTRODUCTION

This guides is meant to be used with the intention to replace the lens.

Warning: The lens is very fragile; any scrape or fingerprint could result in a unusable lens. Take great caution in the replacement of the lens.



TOOLS:

- [Metal Spudger](#) (1)
- [Soldering Iron](#) (1)
- [Phillips #00 Screwdriver](#) (1)



PARTS:

- [Fujifilm Finepix HS30EXR Lens](#) (1)

Step 1 — Frame



- Flip the camera so that it is now upside down.
- With a screwdriver, unscrew all highlighted screws.

Step 2



- Flip the camera so that it is now on the right side.
- With a screwdriver, unscrew all highlighted screws.

Step 3



- Flip the camera so that it is now on the left side.
- Move or remove the flap hiding the camera ports.
- With a screwdriver, unscrew all highlighted screws.

Step 4



- Flip the camera so that it is now on the top side.
- With a spudger, pry off the highlighted metal piece of the camera.

Step 5



- With a screwdriver, unscrew all highlighted screws.

Step 6



- Pull the LCD Screen up and out of the way.
- With a screwdriver, unscrew all highlighted screws.

Step 7



- With a spudger, pry off the frame.

i If the frame does not easily dislodge after a few attempts, ensure that all screws are taken out.

Step 8 — Motherboard



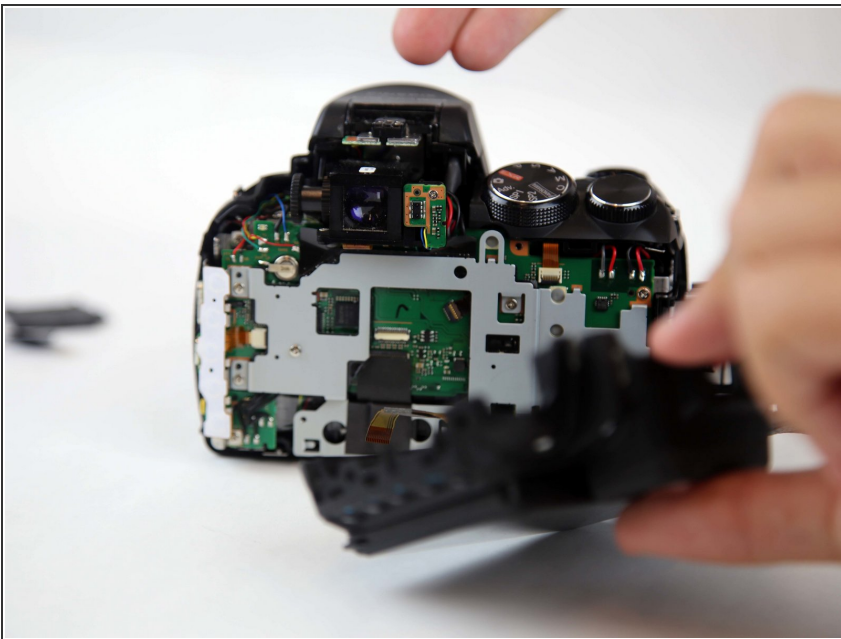
- Slowly and carefully pull the frame away to have a better view of the inside.

Step 9



- Peel back (or off) the black tape to expose more of the inside of the camera.
- Flip the white switch of the highlighted chamber up, and that should unlock the ribbon cable from its compartment.
- To see if this worked, gently pull the ribbon cable out of the compartment. It should come out without force.

Step 10



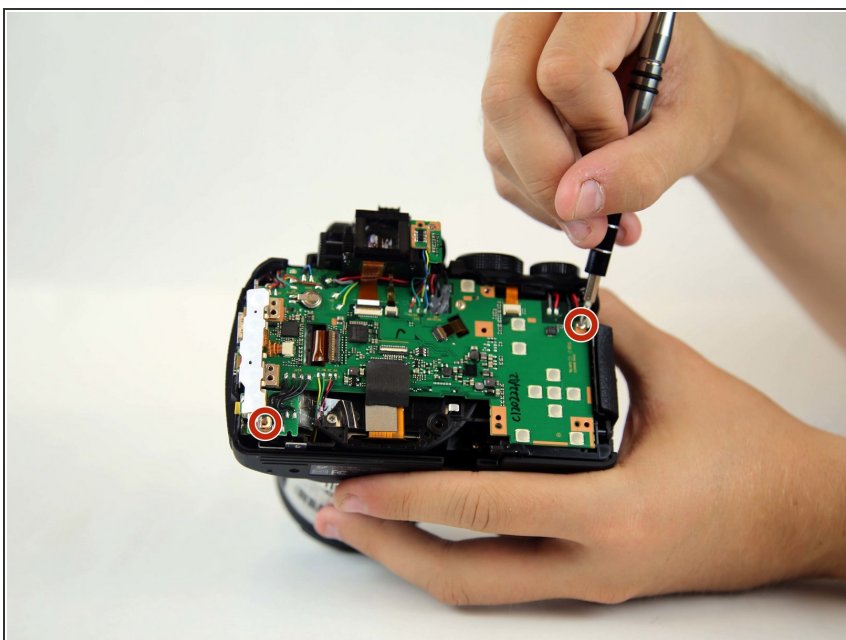
- Remove the ribbon cable.

Step 11



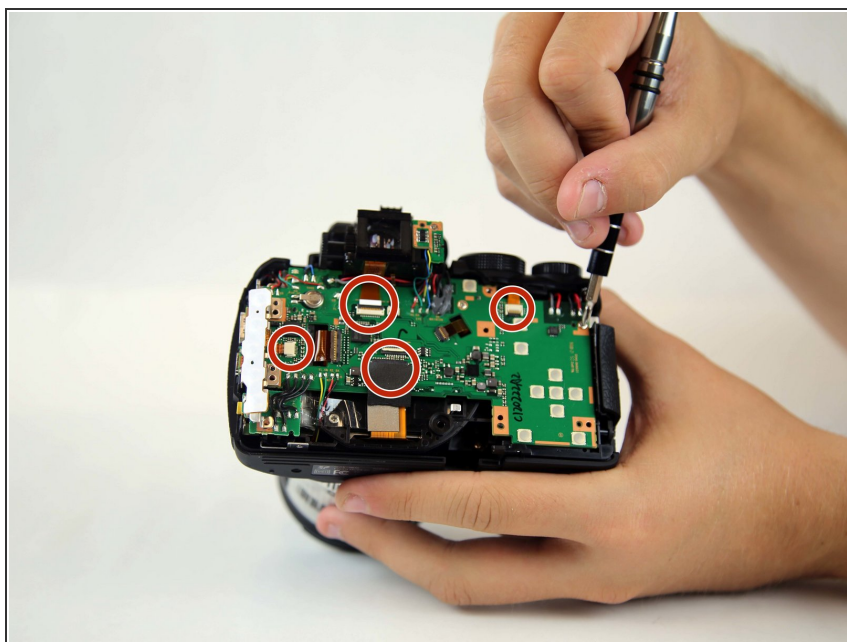
- With a screwdriver, unscrew all highlighted screws.
- Remove the metal casing.

Step 12



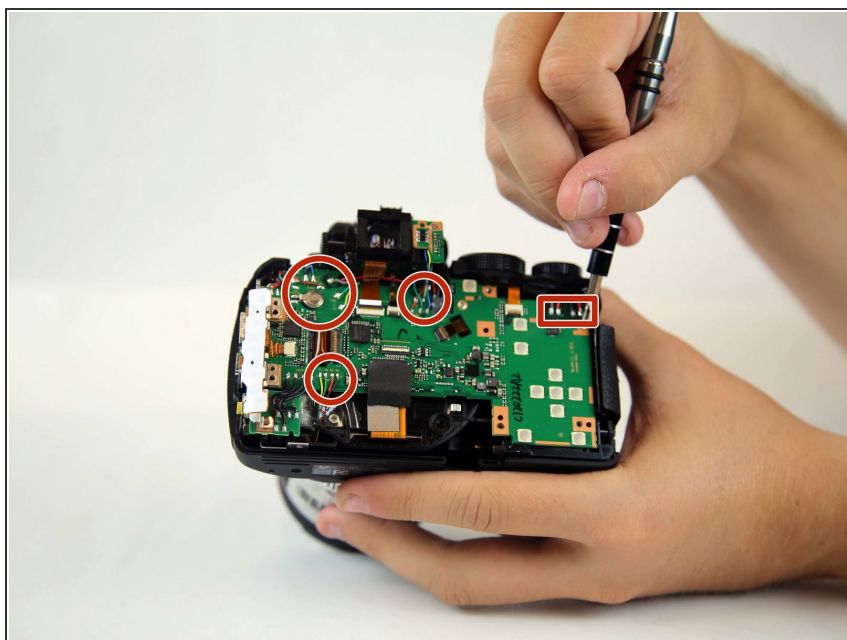
- With a screwdriver, unscrew all highlighted screws.

Step 13



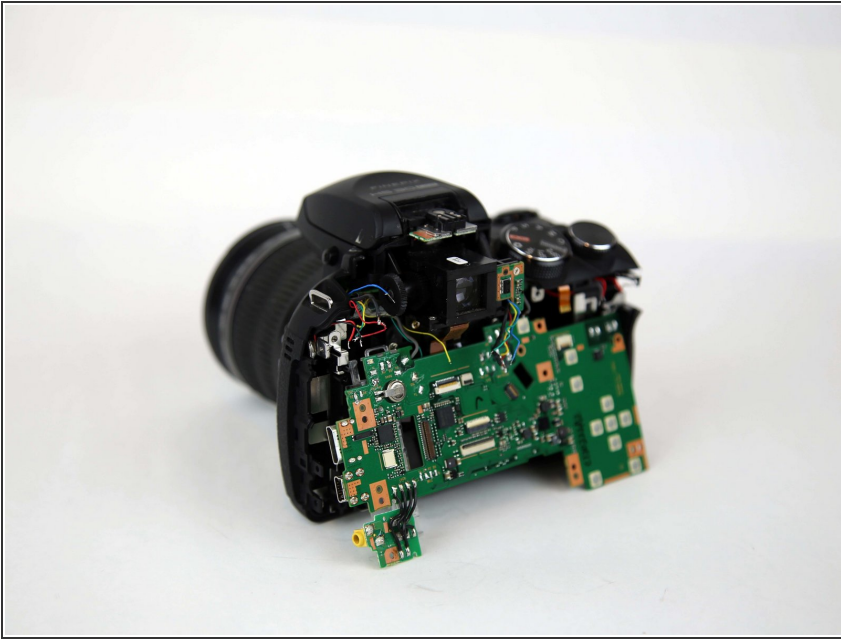
- Ensure the two ribbon cables highlighted are disconnected from the motherboard. (One is under the black tape.)

Step 14



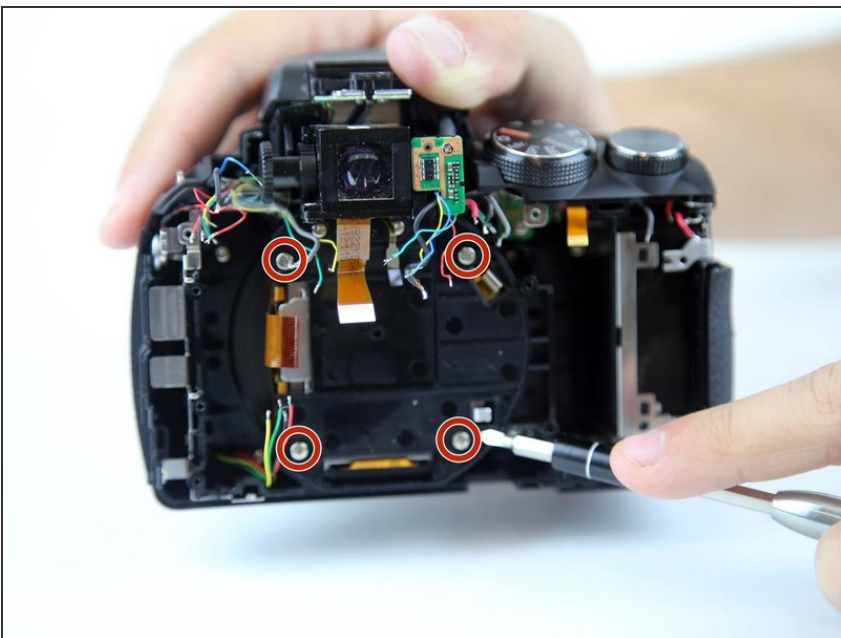
- Begin un-soldering all highlighted areas.

Step 15



- Remove the motherboard
- If your intention is to replace the motherboard, put your new motherboard in and begin re-soldering all cables back to the new motherboard.

Step 16 — Lens



- Once the motherboard is taken out, with a screwdriver, unscrew all highlighted screws.
- Take the lens off once it is unscrewed.

Step 17



- Un-attach the current lens, and replace it with the new lens.

To reassemble your device, follow these instructions in reverse order.