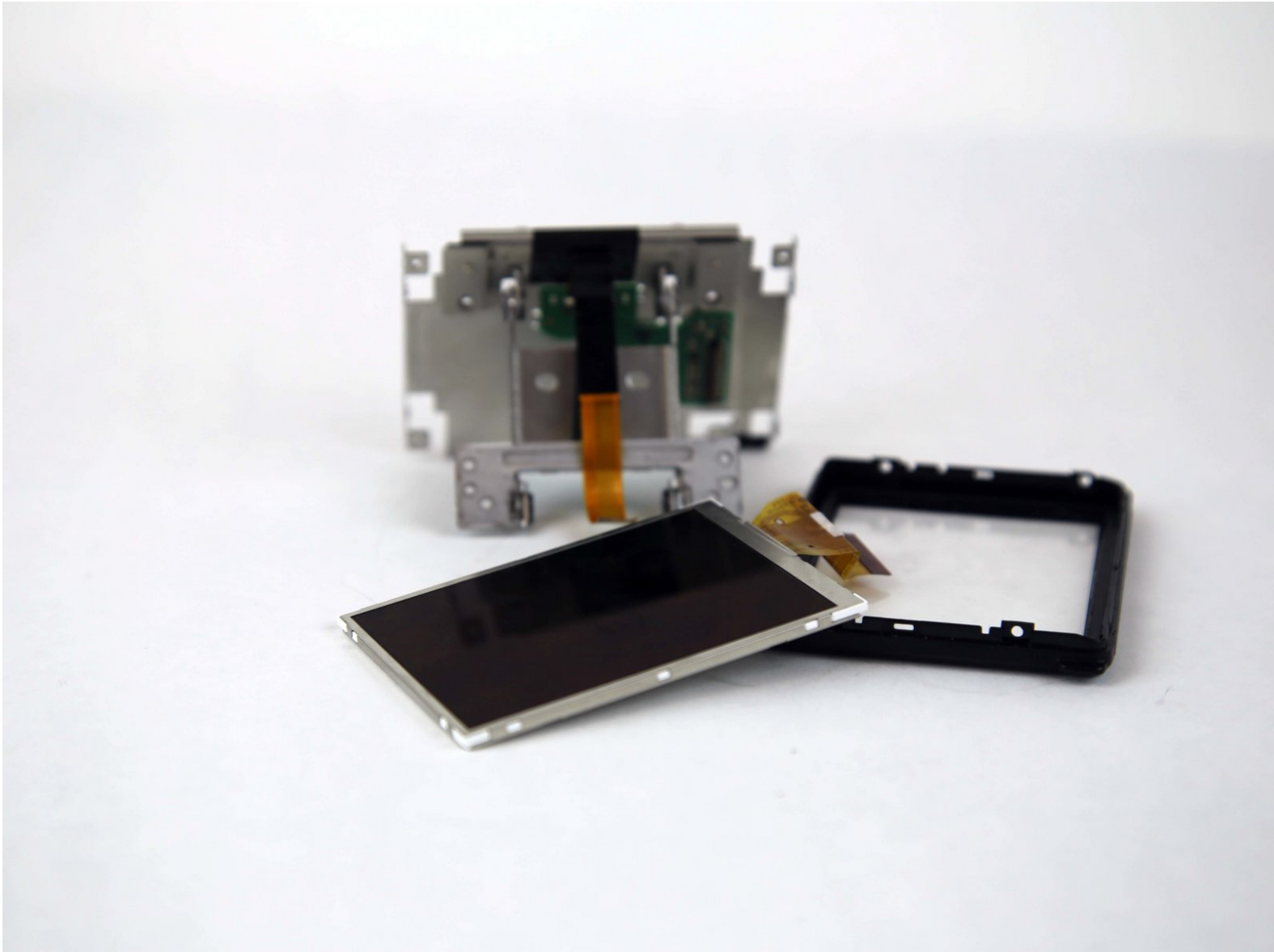




Fujifilm FinePix HS30EXR Screen Replacement

How to replace a Fujifilm FinePix HS30EXR screen.

Written By: Andrew Scouten



INTRODUCTION

This guide serves to help the user replace the LCD Screen.

Warning: The replacement of the screen requires great care, as any force could damage the frame or any internal cables/wires that may be essential to the camera's function. To avoid damage, treat the frame with care when prying it off, and treat and wires or cables with care as well.



TOOLS:

- [Phillips #00 Screwdriver](#) (1)
- [Metal Spudger](#) (1)



PARTS:

- [Fujifilm Finepix HS30EXR LCD Display Screen](#) (1)

Step 1 — Frame



- Flip the camera so that it is now upside down.
- With a screwdriver, unscrew all highlighted screws.

Step 2



- Flip the camera so that it is now on the right side.
- With a screwdriver, unscrew all highlighted screws.

Step 3



- Flip the camera so that it is now on the left side.
- Move or remove the flap hiding the camera ports.
- With a screwdriver, unscrew all highlighted screws.

Step 4



- Flip the camera so that it is now on the top side.
- With a spudger, pry off the highlighted metal piece of the camera.

Step 5



- With a screwdriver, unscrew all highlighted screws.

Step 6



- Pull the LCD Screen up and out of the way.
- With a screwdriver, unscrew all highlighted screws.

Step 7



- With a spudger, pry off the frame.
- ❗ If the frame does not easily dislodge after a few attempts, ensure that all screws are taken out.

Step 8 — Screen



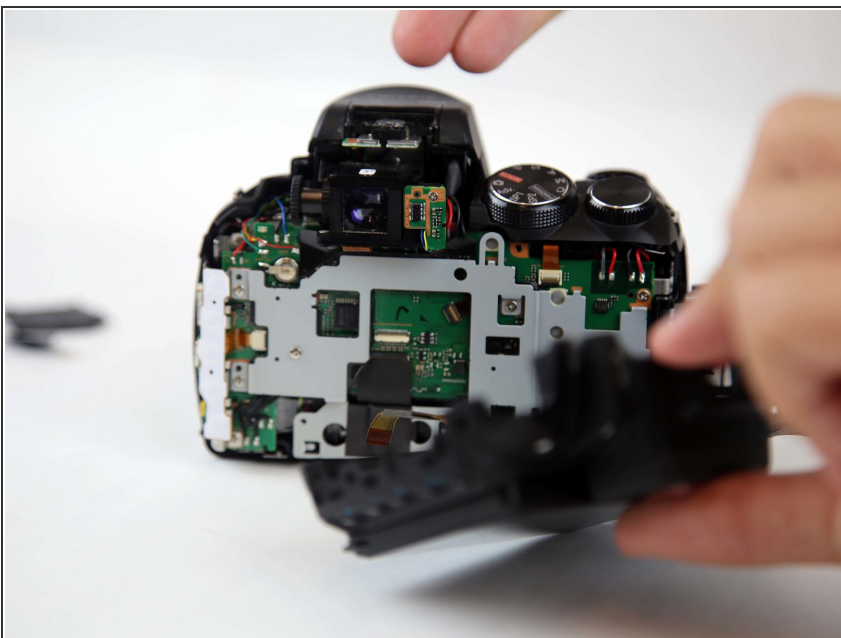
- Slowly and carefully pull the frame away to have a better view of the inside.

Step 9



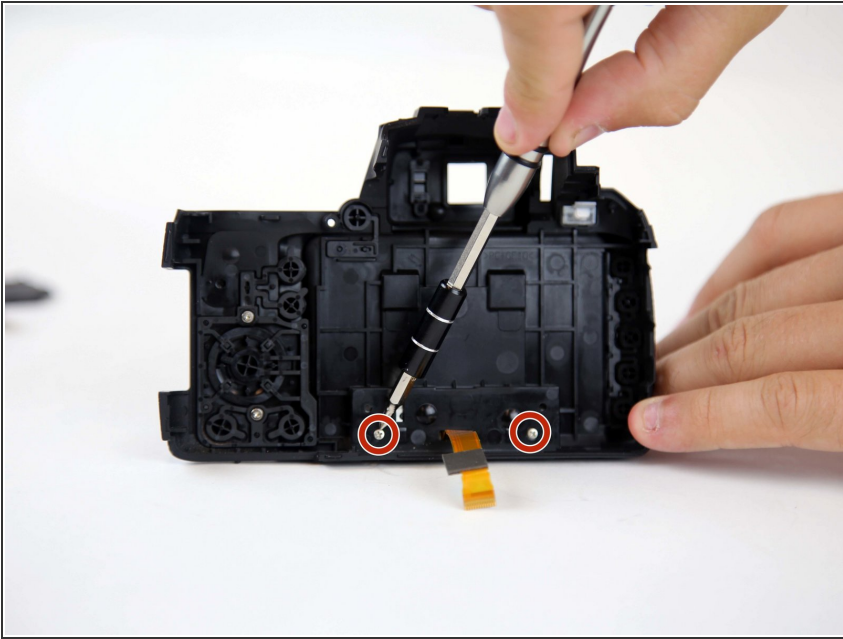
- Peel back (or off) the black tape to expose more of the inside of the camera.
- Flip the white switch of the highlighted chamber up, and that should unlock the ribbon cable from its compartment.
- To see if this worked, gently pull the ribbon cable out of the compartment. It should come out without force.

Step 10



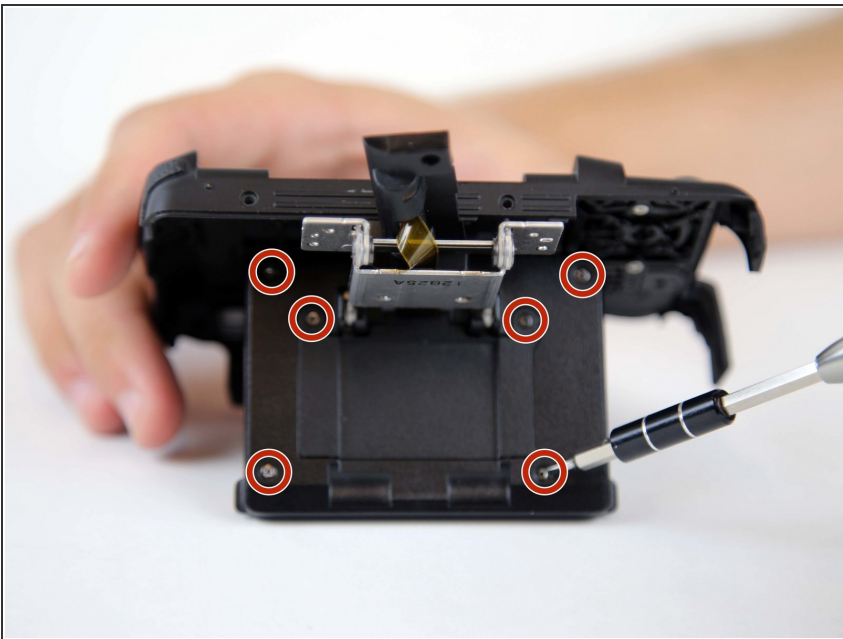
- Now that the ribbon cable is unconnected, pull away the frame to work on.

Step 11



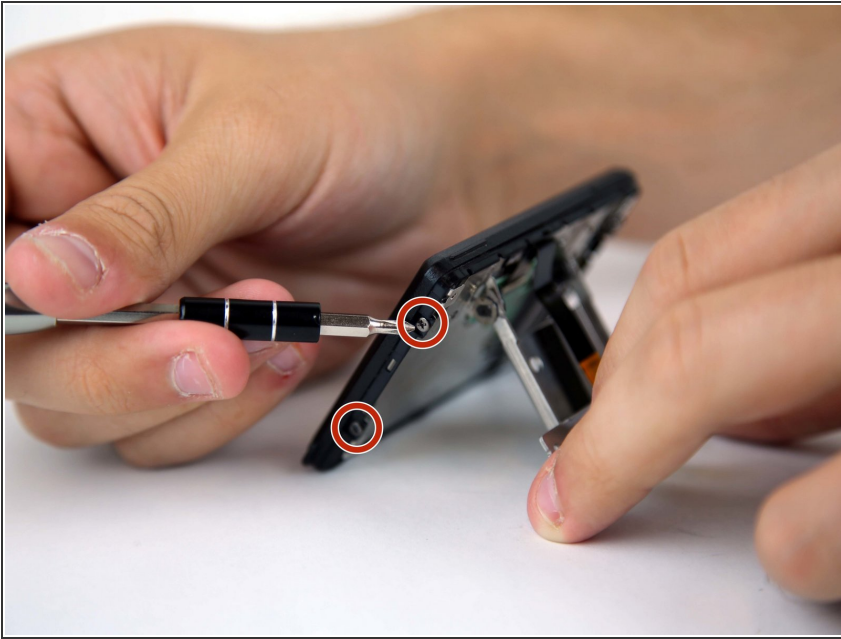
- Flip the frame component so that the inside is now accessible.
- With a screwdriver, unscrew all highlighted screws.

Step 12



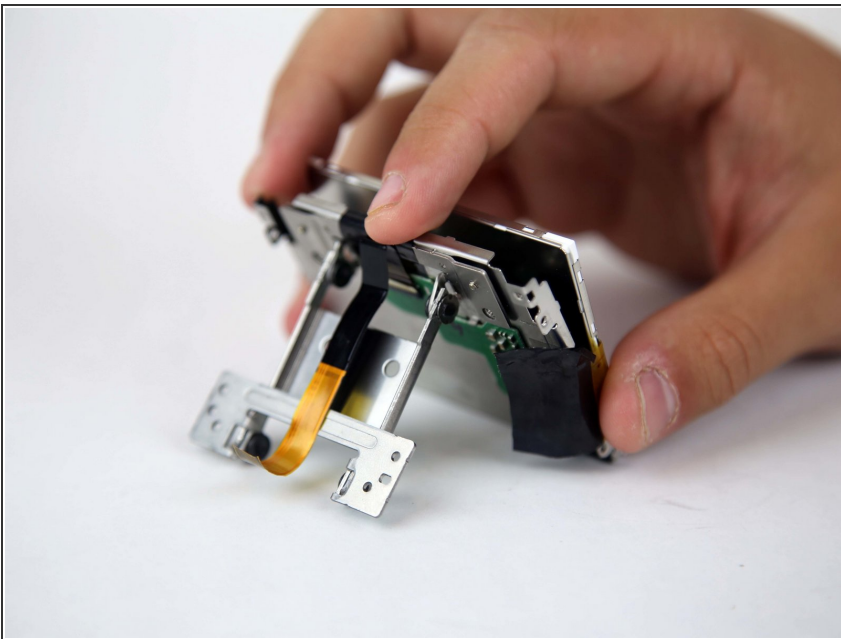
- Flip the LCD Screen component so that the bottom half is now accessible.
- With a screwdriver, unscrew all highlighted screws.

Step 13



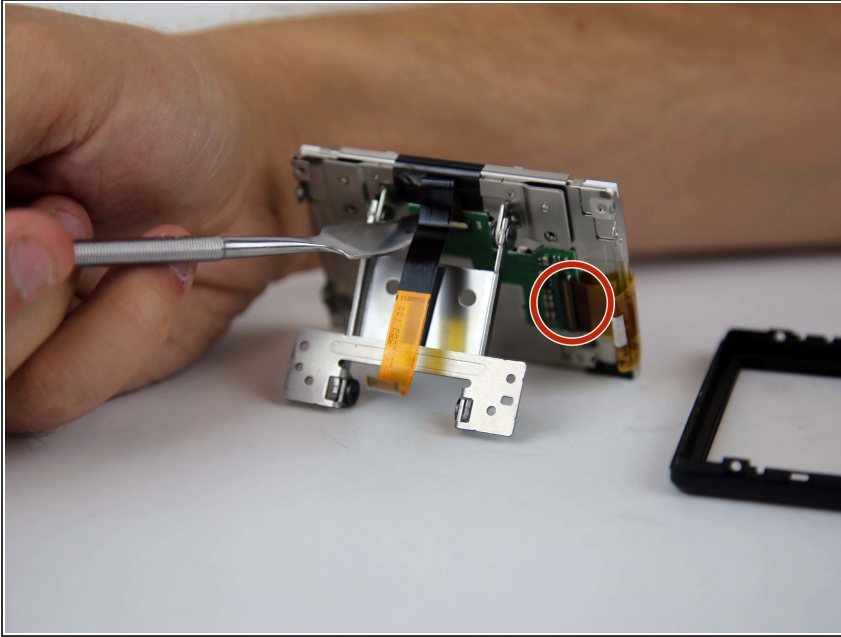
- Remove the LCD Screen component from its mount.
- Turn the LCD Screen component so that the right side is now accessible.
- With a screwdriver, unscrew all highlighted screws.

Step 14



- The LCD Screen can now be removed from the LCD Screen Mount.
- Carefully remove the LCD Screen, as it is attached by another ribbon cable.

Step 15



- To remove the LCD Screen, flip the switch on the ribbon cable's container that is closest to the ribbon cable (highlighted by the red circle).
- Carefully remove the ribbon cable from its compartment, and remove the LCD Screen.
- ★ Position your new LCD Screen onto where the old one was removed from, and reattach the ribbon cable (ensure that the switch is now clamped down; a light tug should not dislodge the ribbon cable).

To reassemble your device, follow these instructions in reverse order.