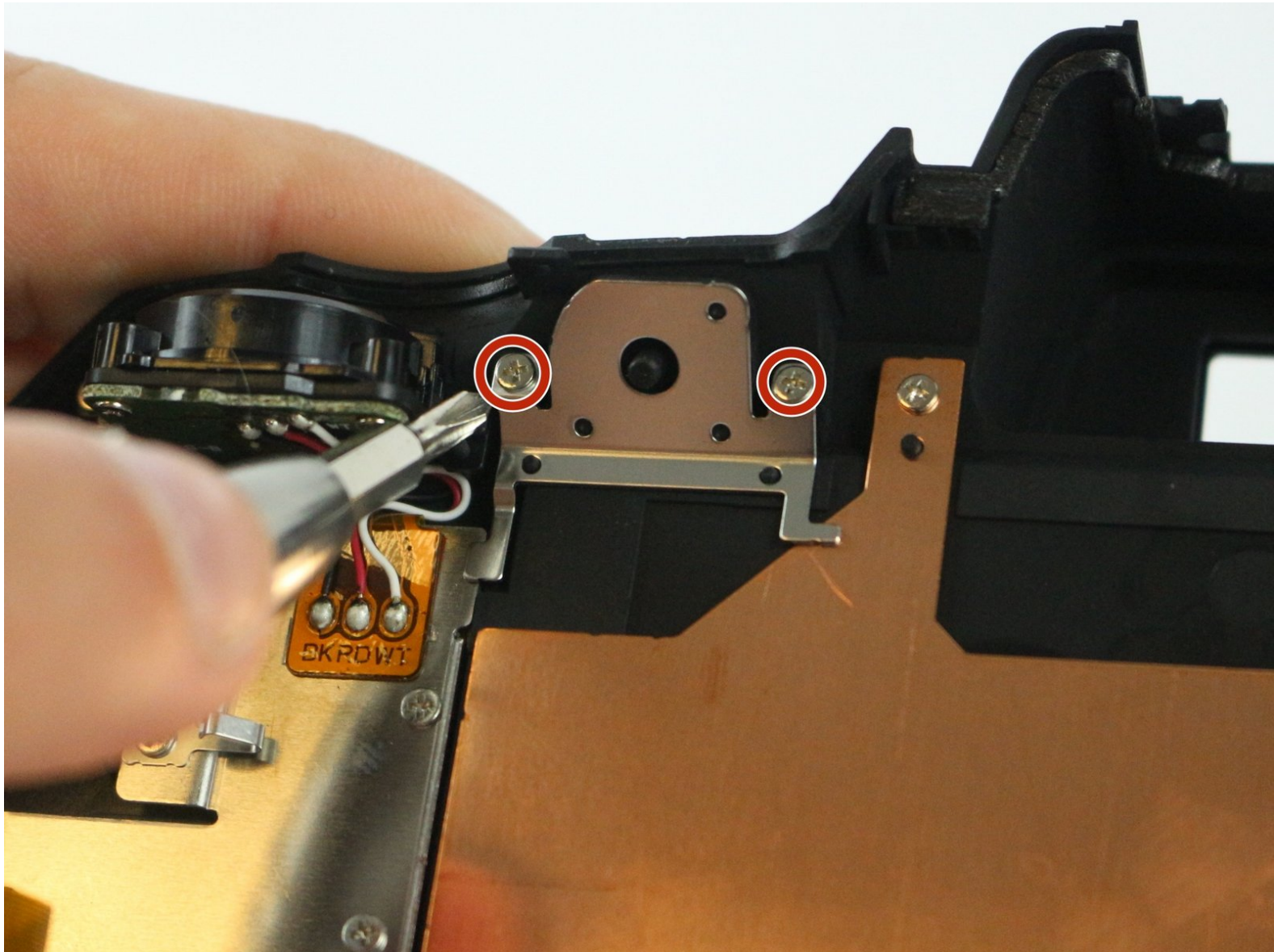




# Fujifilm FinePix S1 EVF/LCD Button Replacement

Replacing EVF/LCD button that is no longer switching the eyepiece view to the LCD Screen.

Written By: Brandon Benavente



---

# INTRODUCTION

Outline what you are going to teach someone how to do.

---



## TOOLS:

- [Spudger](#) (1)
  - [iFixit Opening Tools](#) (1)
-

## Step 1 — Back Camera Body



- Remove the 7 screws on the perimeter of the camera body.

## Step 2



- Remove the flash accessory cap.
- Remove the spacer covering the screws under the flash accessory cap.

## Step 3



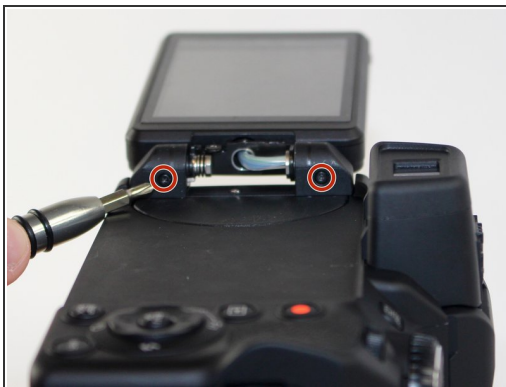
- Remove the 4 screws from the inside of the flash accessory slot.
- Pull off the flash accessory slot.

## Step 4



- Remove the screw from LCD Screen hinge cover.
- Remove the LCD Screen hinge cover.

## Step 5



- Remove the 3 screws located on the LCD screen hinge.
- Remove the caps from both ends of the LCD screen hinge by lifting them off.

## Step 6



- Remove the 2 screws from under the LCD hinge caps.

## Step 7



- Pry apart the back body from the rest of the camera.

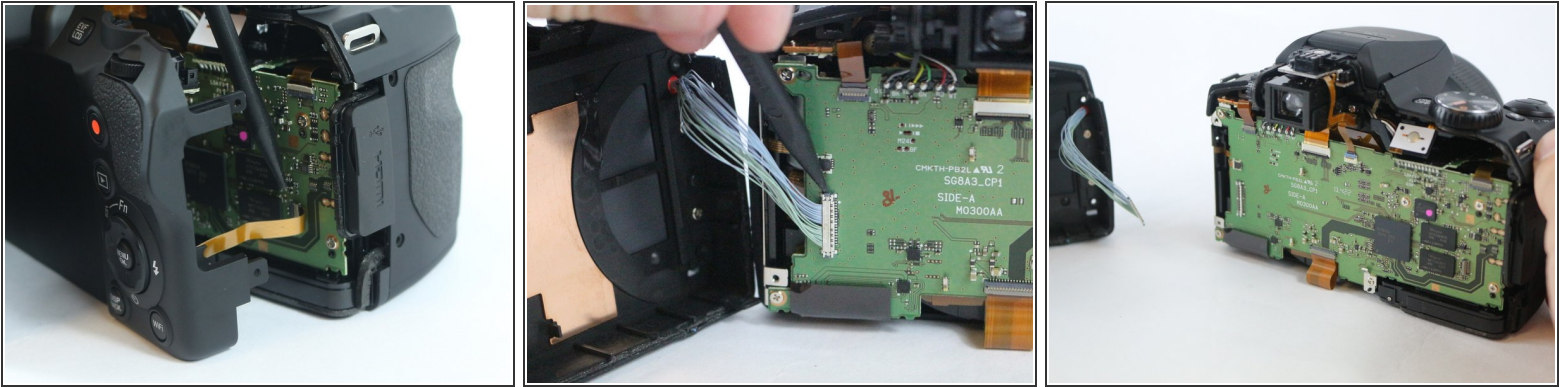
## Step 8



- Carefully pull the back body off of the camera.

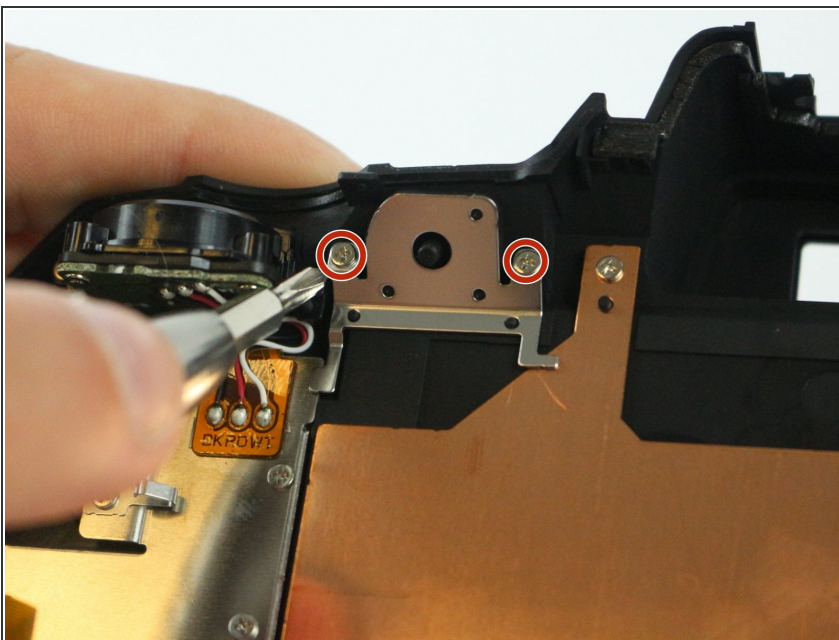
⚠ Make sure to not yank off the connections from the body to the motherboard.

## Step 9



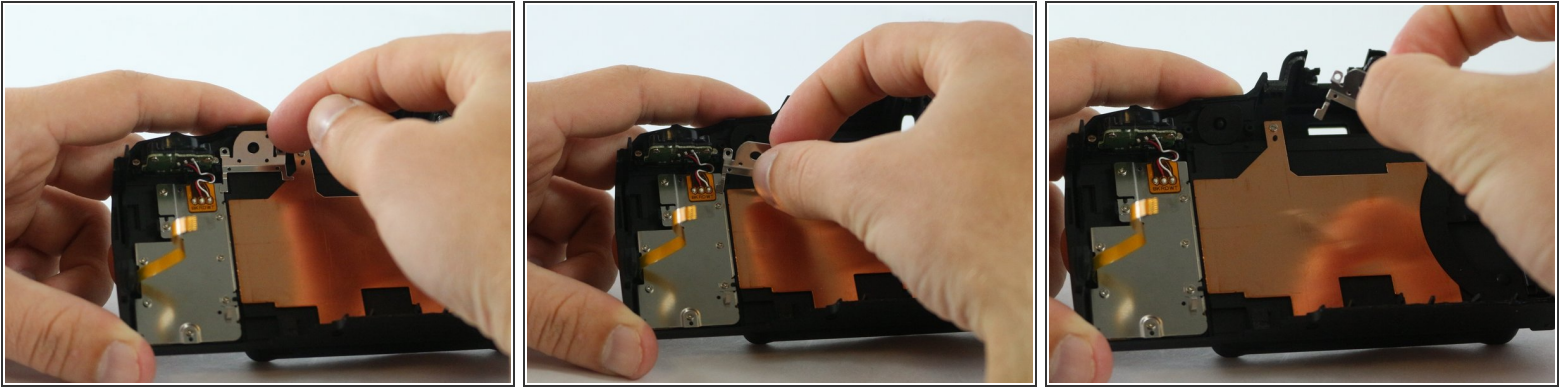
- Use a spudger to lift up on the tab, releasing the yellow wire strip.
- Use a spudger to lift up on the side tab, releasing the blue wire connection.

## Step 10 — EVF/LCD Button Cover



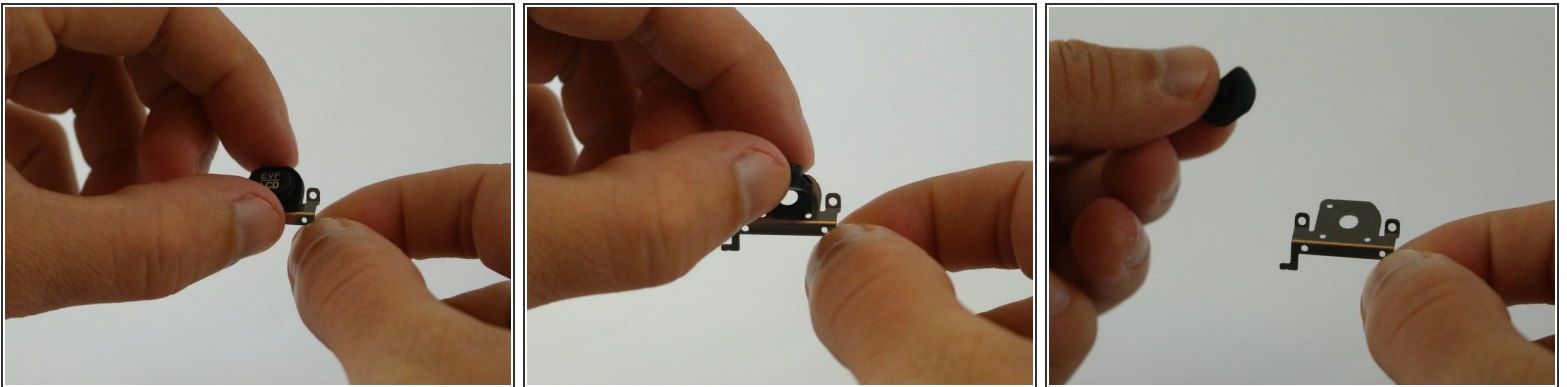
- Remove 2 screws from back of EVF/LCD button.

## Step 11



- Pull EVF/LCD button frame out from the camera casing.

## Step 12



- Pull button cover off of the button frame.

To reassemble your device, follow these instructions in reverse order.