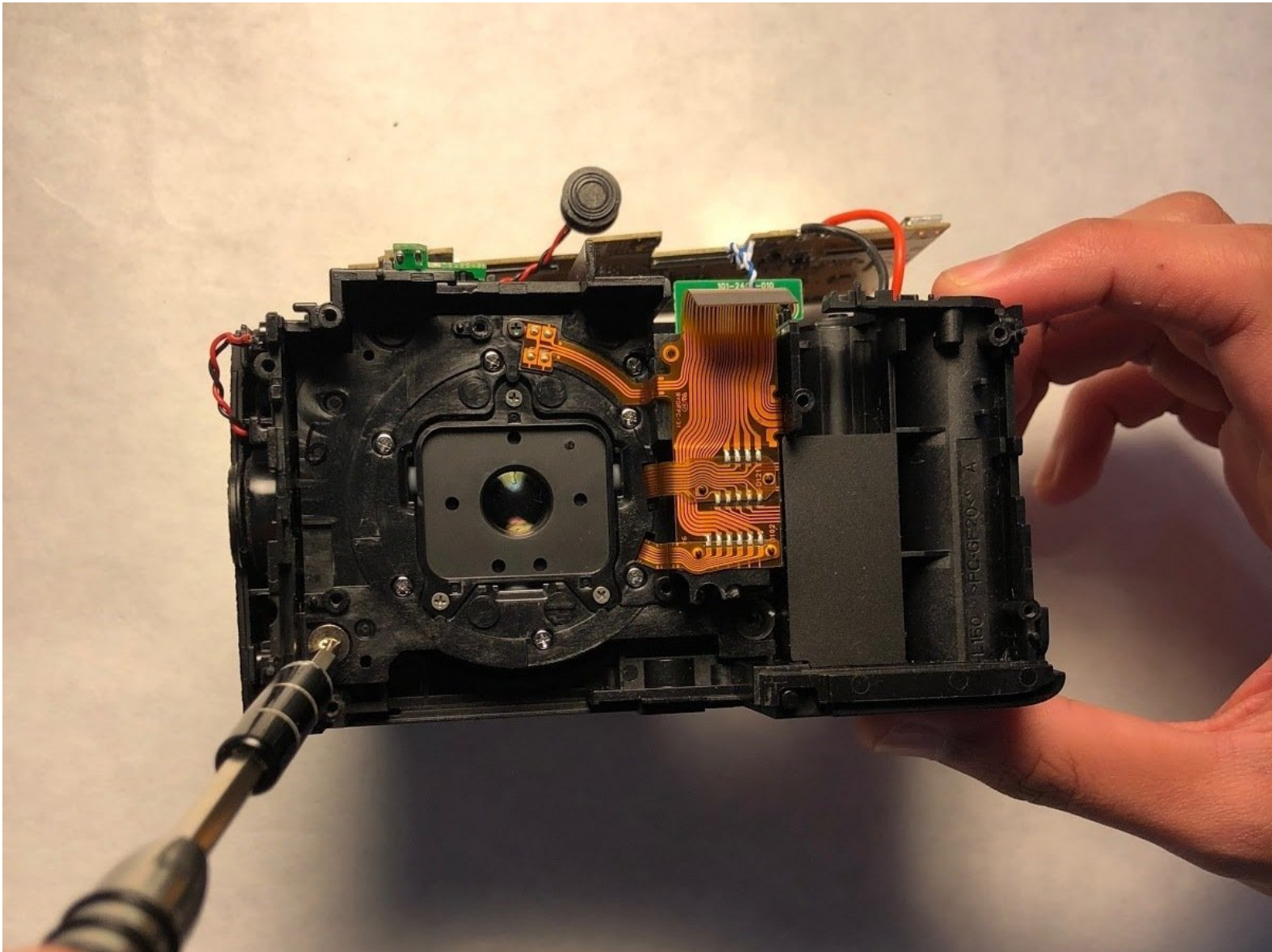




Fujifilm FinePix S4200 Lens Replacement

Follow this guide step by step to replace the lens in the Fujifilm FinePix S4200.

Written By: Joshua Greer



INTRODUCTION

Use this guide to replace the lense in the Fujifilm Finepix S4200. This guide requires the use of a Phillips 000 screwdriver and soldering iron. Previous soldering experience is recommended.



TOOLS:

- [Soldering Iron](#) (1)
 - [Phillips #000 Screwdriver](#) (1)
-

Step 1 — Lens



- Turn off the camera by pushing the ON/OFF switch as shown.

Step 2



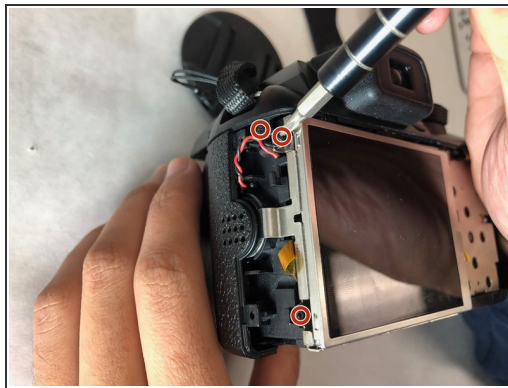
- Using a Phillips #000 screwdriver, remove all of the 4mm screws from the left, right, and bottom of the camera.

Step 3




- Remove casing part pictured by gently pulling up until casing is fully detached.

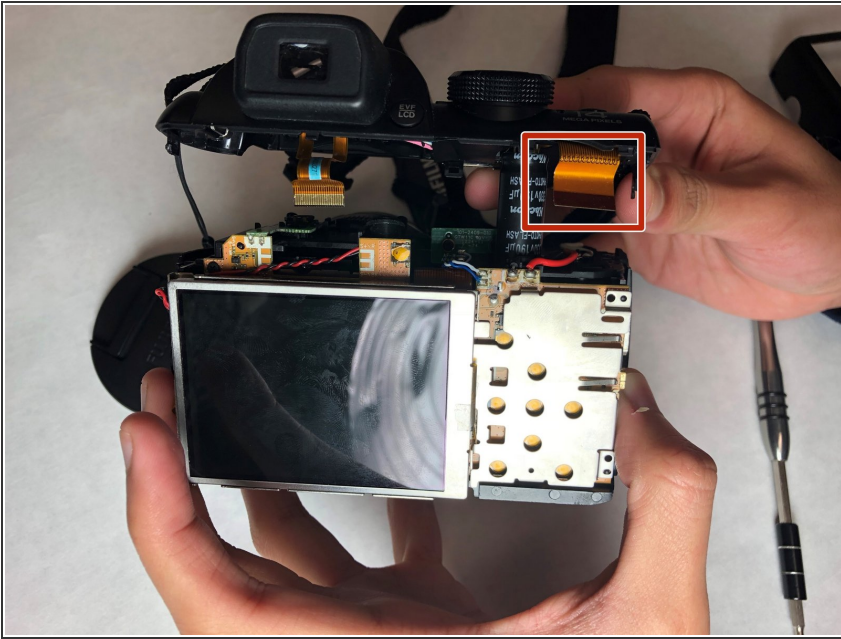
Step 4



- Remove the 4 mm screws on the metal plate. Then remove the 4 mm screws on left side of the camera, and remove the two 4mm screws on right side.

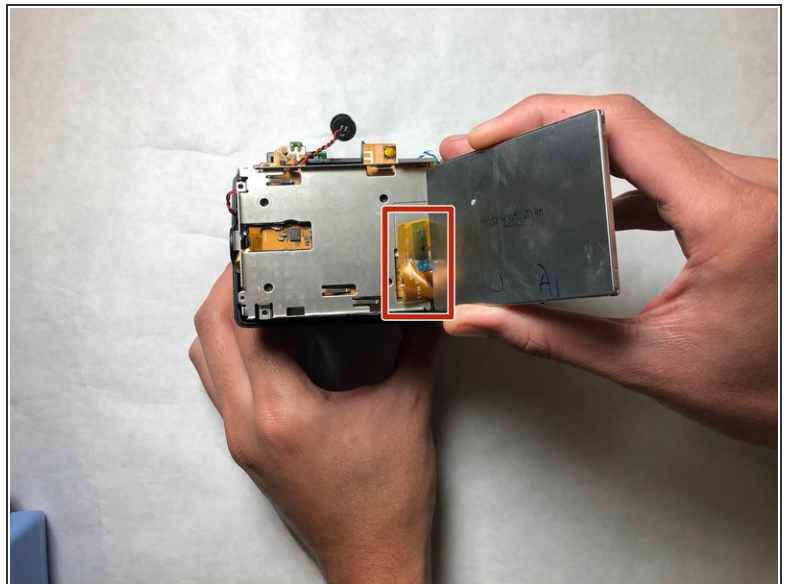
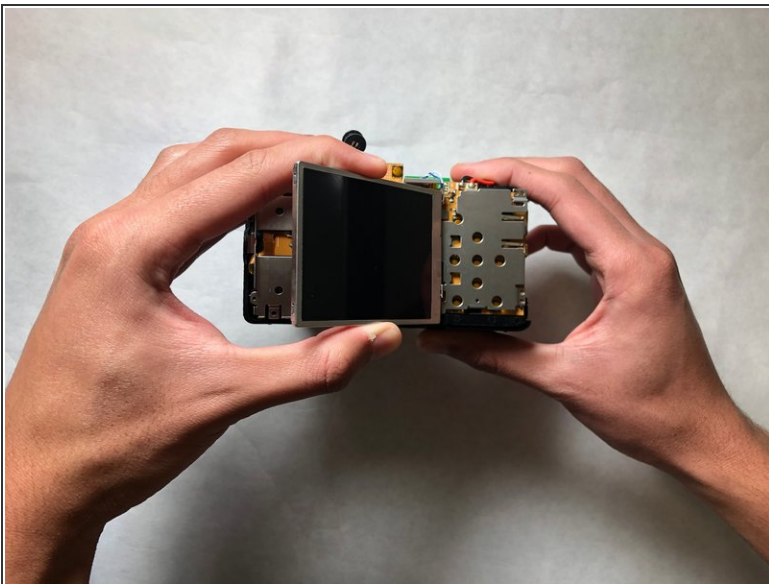
 Use the Phillips #000 to avoid stripping the screws.

Step 5



- Remove orange ribbon cable by gently pulling on the cable until it is detached from the clamping device on the motherboard.
- Remove the top casing by pulling upwards.

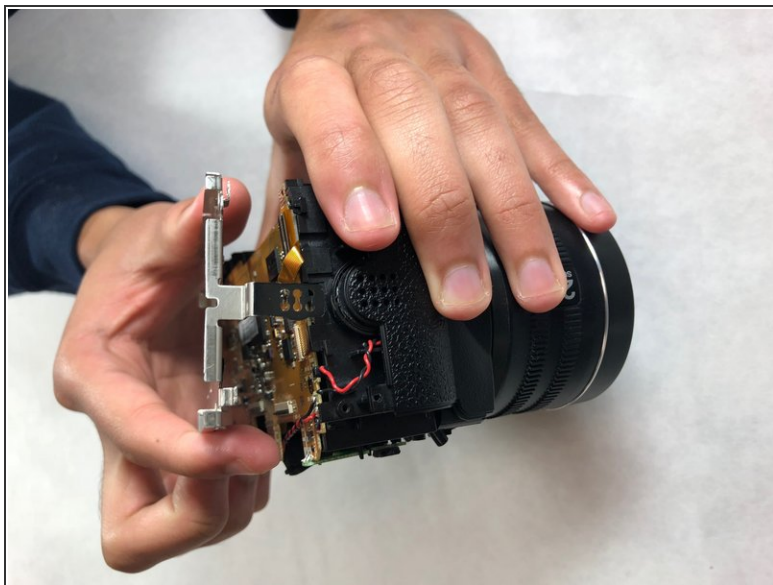
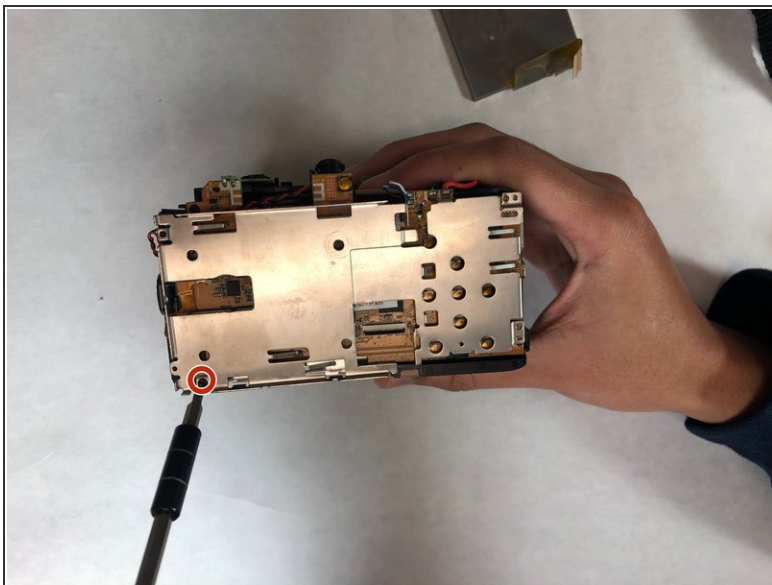
Step 6



- Carefully remove the LCD screen.

⚠ Gently pull on orange tab until it is free. This orange strip is susceptible to tearing.

Step 7




- Remove remaining 4mm screw. Detach metal plate by lifting plate upwards.

 Use the Phillips #000 screwdriver.

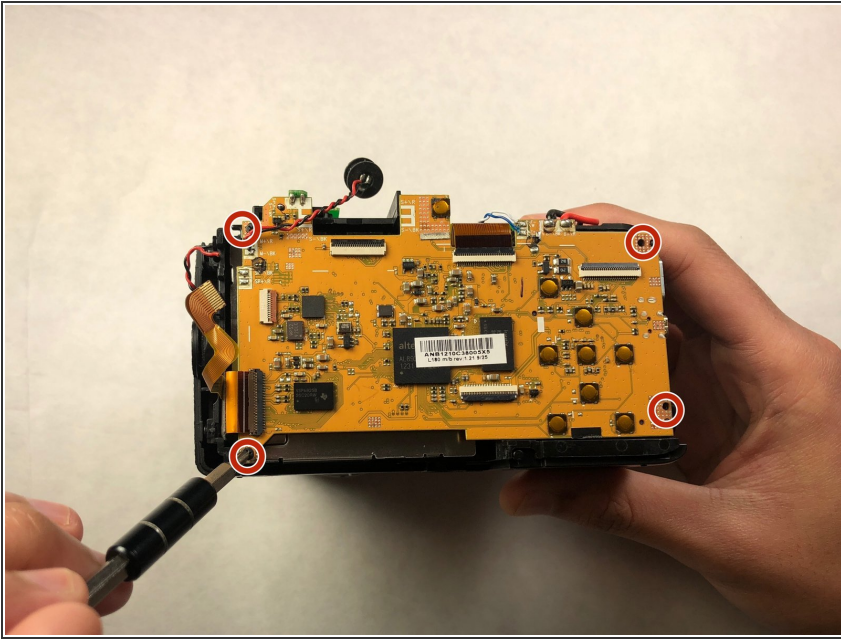
Step 8



- Remove remaining orange tabs on motherboard by gently pulling on all tab until they are free.

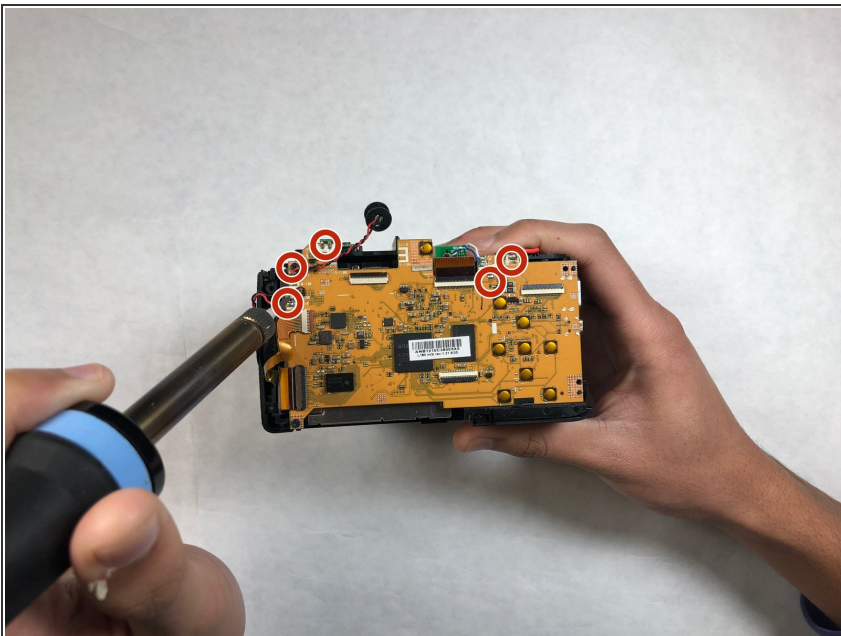
 Caution: Orange strips are susceptible to tearing.

Step 9



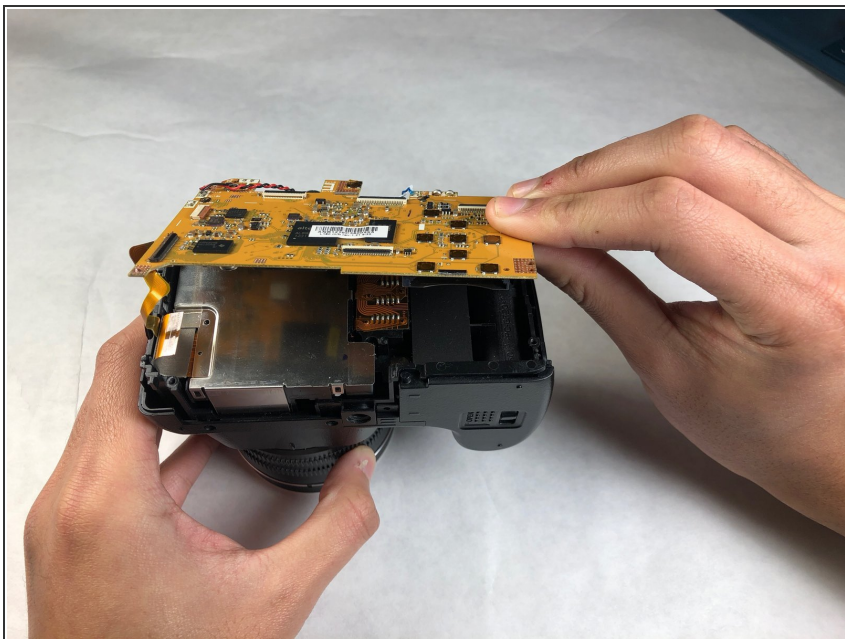
- Using the Phillips #000 screwdriver, remove the 4mm screws in the corners of the motherboard.

Step 10



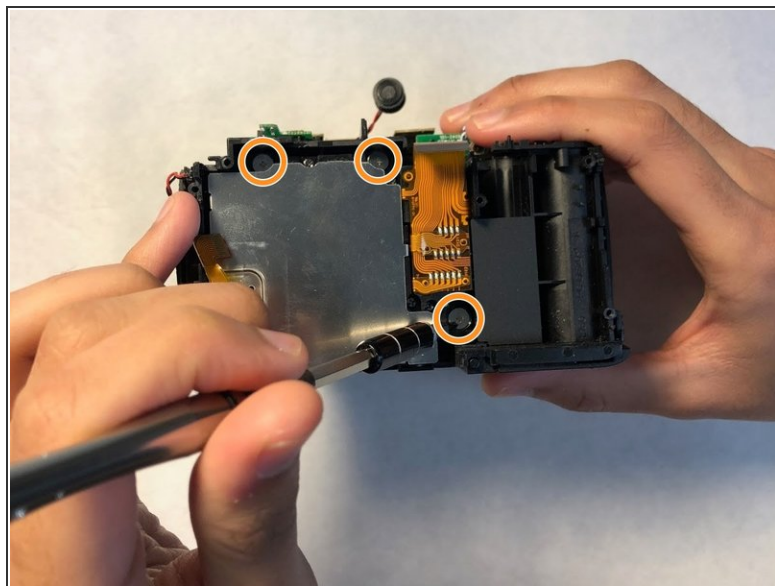
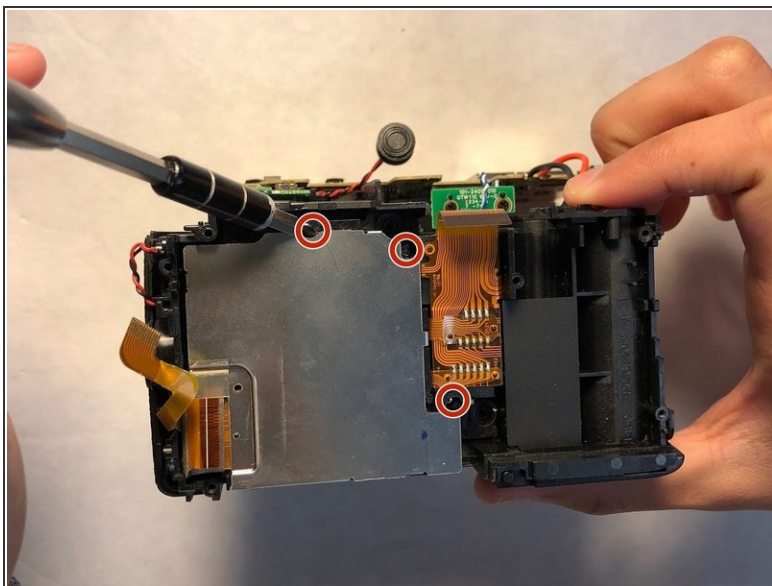
- Use a soldering iron to desolder the five connections shown.
- ⚠ Caution: After removing the soldered connections, they must be given ample time to cool before moving to the next step.

Step 11



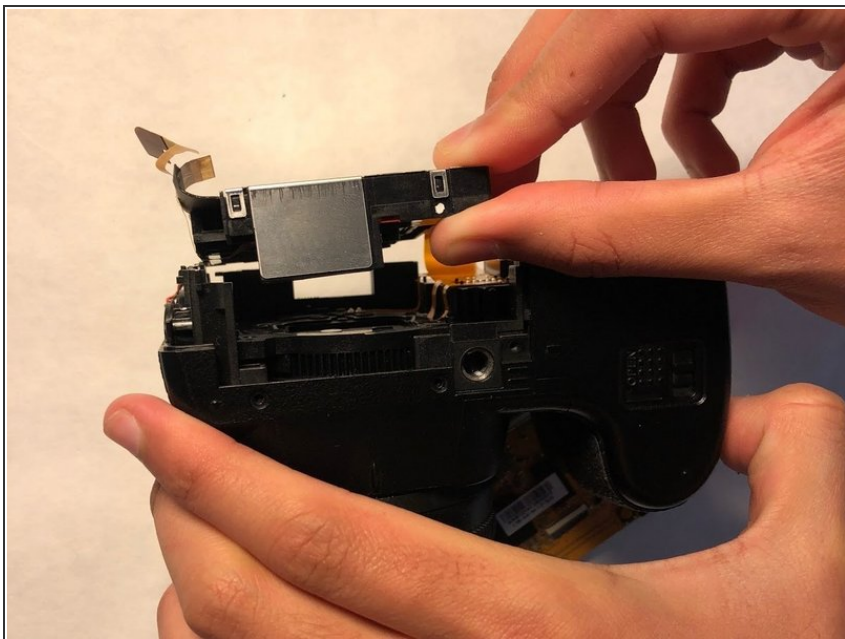
- Remove the motherboard. It should be free of all connections at this point and can be lifted with ease.

Step 12



- Using a Phillips #000 screwdriver, remove the 4mm screws around the metal plate.
- Using a Phillips #000 screwdriver, remove the 10mm screws.

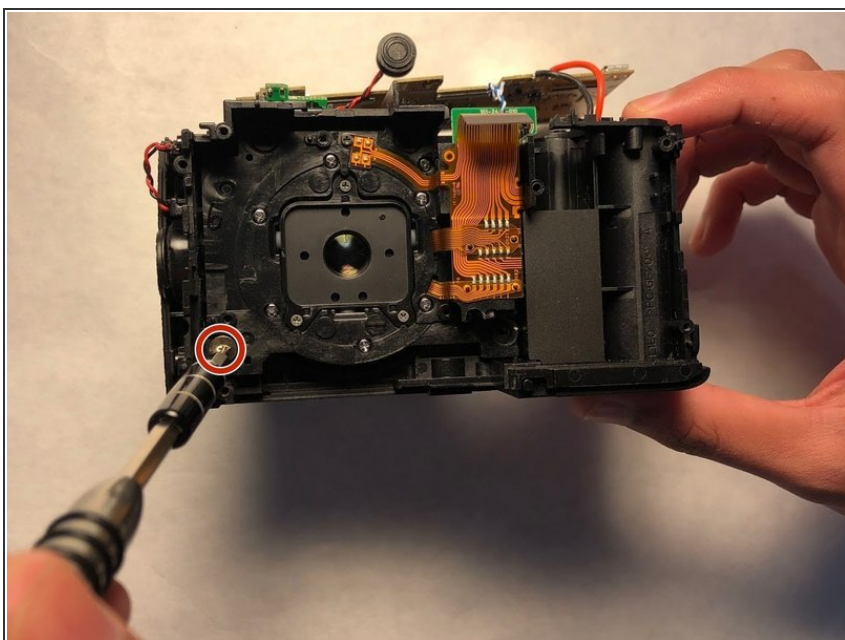
Step 13



- Slowly lift up the metal plate and remove it from the camera.

⚠ Caution: Orange strips are susceptible to tearing.

Step 14



- Using a Phillips #000 screwdriver, remove the 10mm screw.

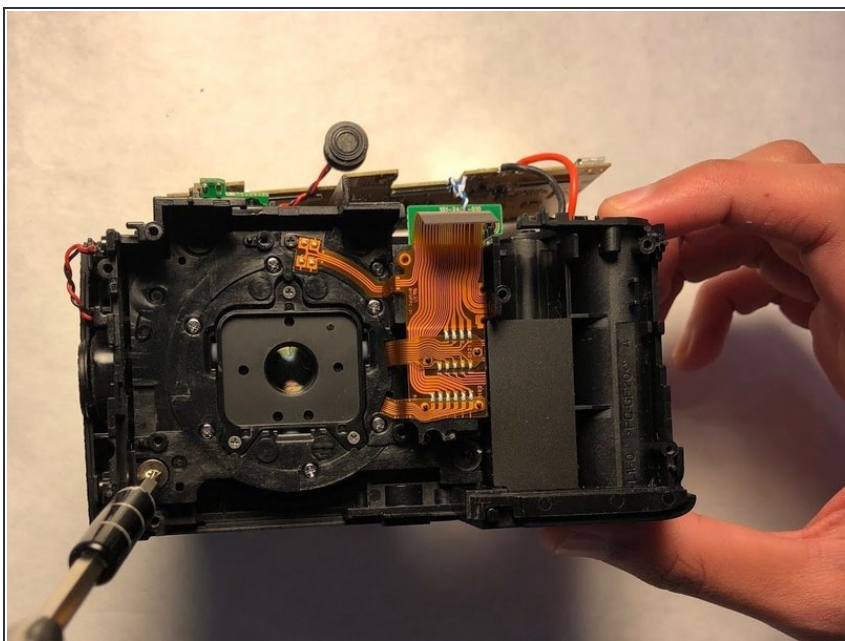
Step 15



- Remove the inner lens.

⚠ Caution: Be careful while removing the lens.

Step 16



- Change the broken inner lens with a new inner lens.
- Reassemble the camera.

To reassemble your device, follow these instructions in reverse order.