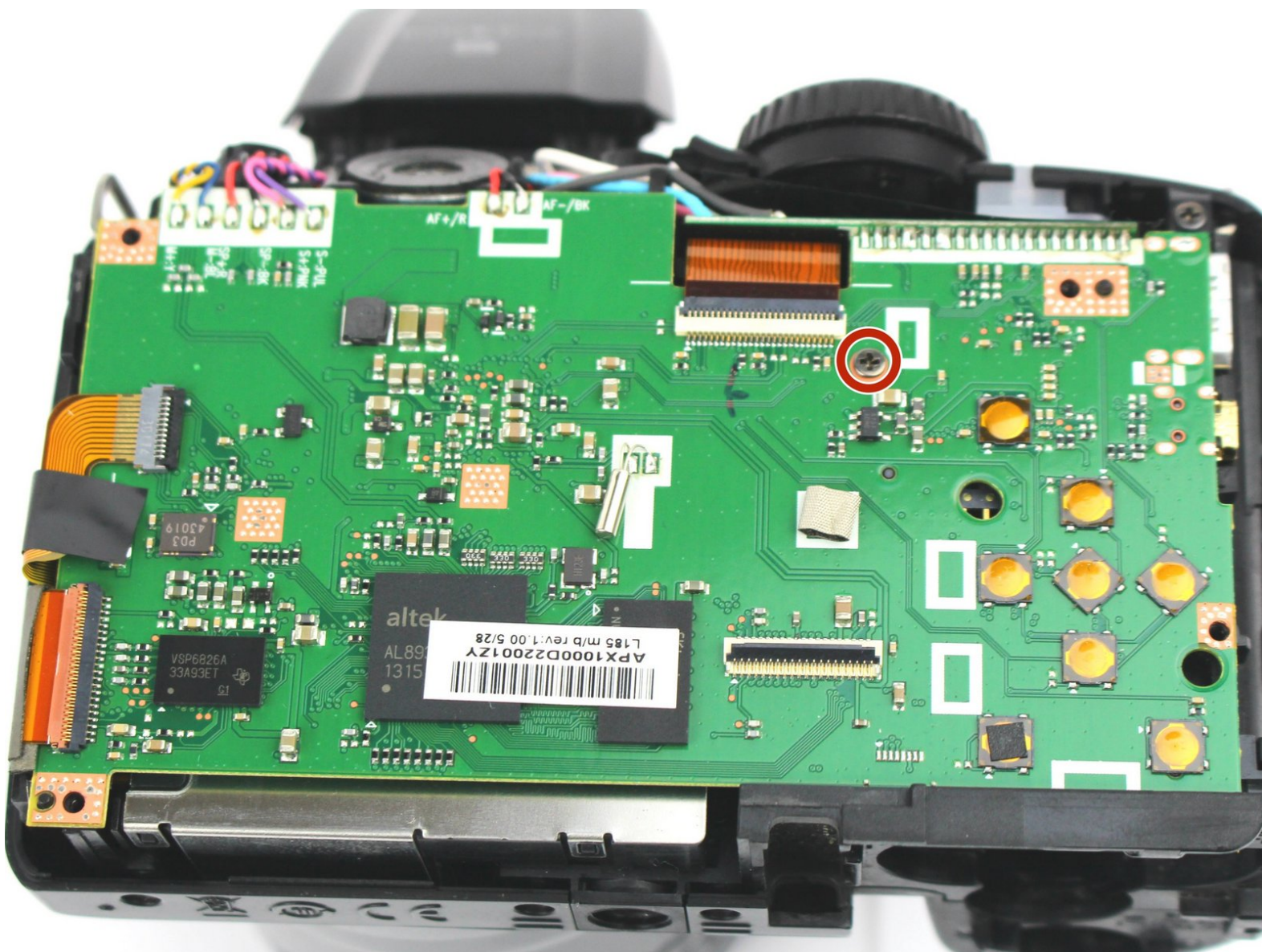




Fujifilm FinePix S4800 Motherboard Replacement

This guide helps users remove the motherboard that is located in the opposite side of the camera lens.

Written By: Fanessa Jeune



INTRODUCTION

In this guide, we will be taking apart the Fujifilm FinePix S4800 to remove and replace the motherboard . This involves taking off the rear plastic case of the camera by removing screws and using a plastic removal tool to separate the rear case from the rest of the camera. After removing the LCD screen, there awaits only a few more screws to detach from the RF shield and motherboard.



TOOLS:

- [iFixit Opening Tools](#) (1)
 - [JIS Driver Set](#) (1)
 - [Spudger](#) (1)
 - [Soldering Iron](#) (1)
-

Step 1 — Battery



- ❗ Make sure that the camera is powered off before continuing.
- Rotate the camera so that the label on the base of the camera is facing up.
- On the battery compartment door, there is a slider that says "open". Slide it down and push the door to the right to release the door.

Step 2



- Remove all four batteries and set them aside.
- ★ When replacing the batteries, be sure to note the markings on the face of the battery compartment. These markings let you know which side of the battery ("+" or "-") needs to be facing up in each slot.

Step 3 — Rear Case



- Remove the three 5.0 mm JIS #000 screws on the bottom of the camera.

Step 4



- Rotate the camera so that the HDMI port is facing up.
- Remove the two 5.0 mm JIS #000 screws.

Step 5



- Rotate the camera so that the text "30x superwide 24-720mm" is facing up.
- Remove the two 5.0 mm JIS #000 screws.

Step 6




- Press the pop-up button highlighted in the picture to release the flash mechanism.
- Remove the two 5.0 mm JIS #000 screws highlighted in the picture.

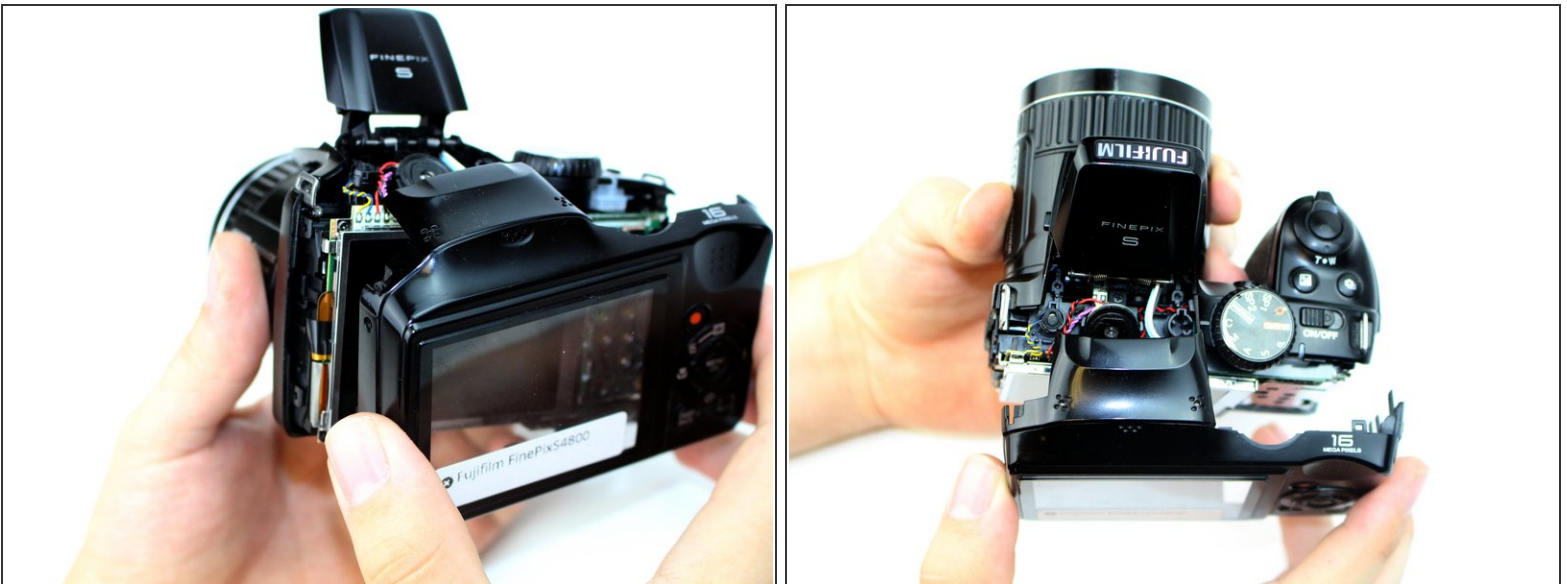
Step 7



- Use a plastic opening tool to separate the rear case from the camera on each of the sides until the panel is completely separated.

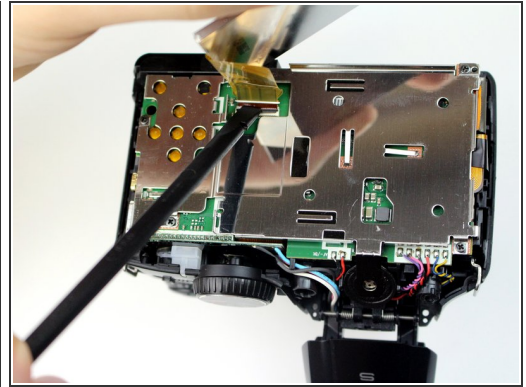
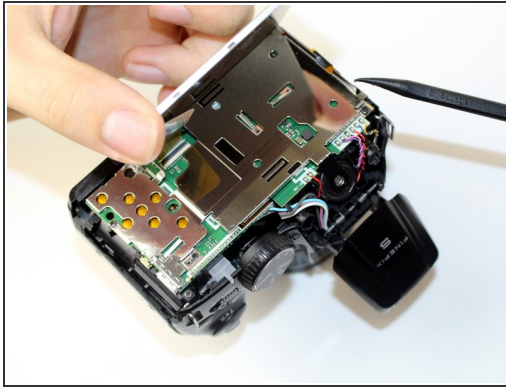
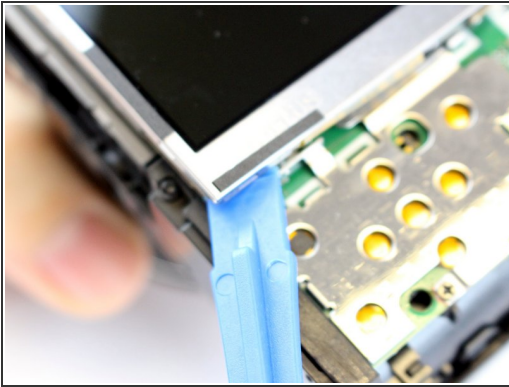
 The plastic case is fragile, so take your time on each side making sure to pry each side evenly as you continue around the camera with the tool.


Step 8




- Gently, remove the rear case from the camera and set it aside.

Step 9 — LCD Screen

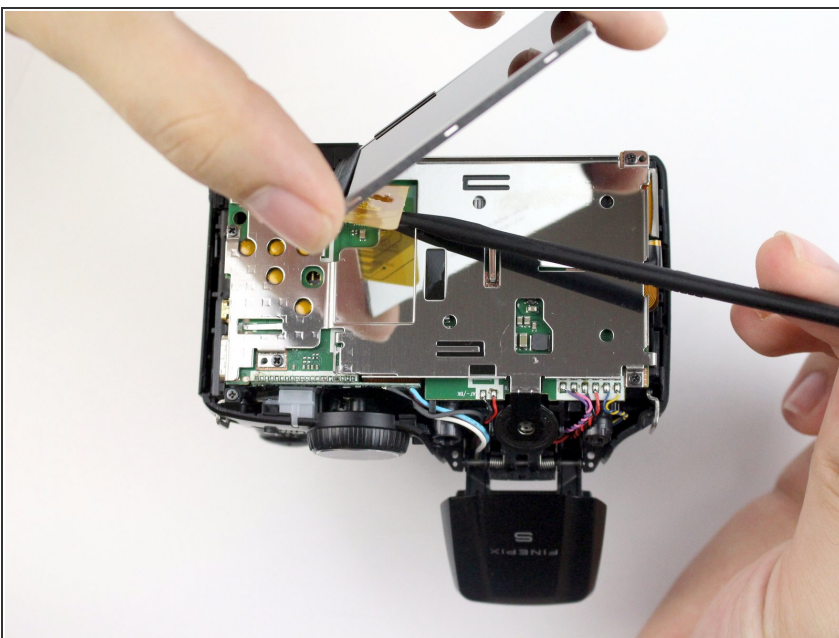


 At this point, it is highly recommended that you wear an ESD wristband to prevent damage to the internal electronic components.

 With respect to the camera that was disassembled for this guide, the LCD display easily fell out of its housing after the rear case was removed. If your screen fits more tightly, you can use a plastic removal tool to gently pry up one of the edges of the screen and that will release it from its mount.

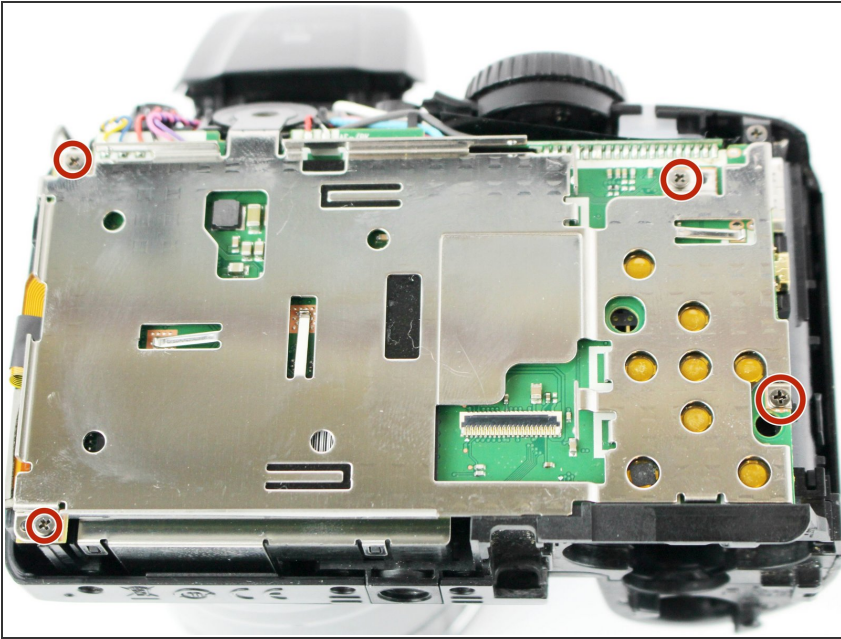
- Gently tilt the LCD screen toward the bottom of the camera and use a spudger to flip the lock for the ZIF cable attached to the LCD.

Step 10



- Lift the screen away from the camera and set it aside.

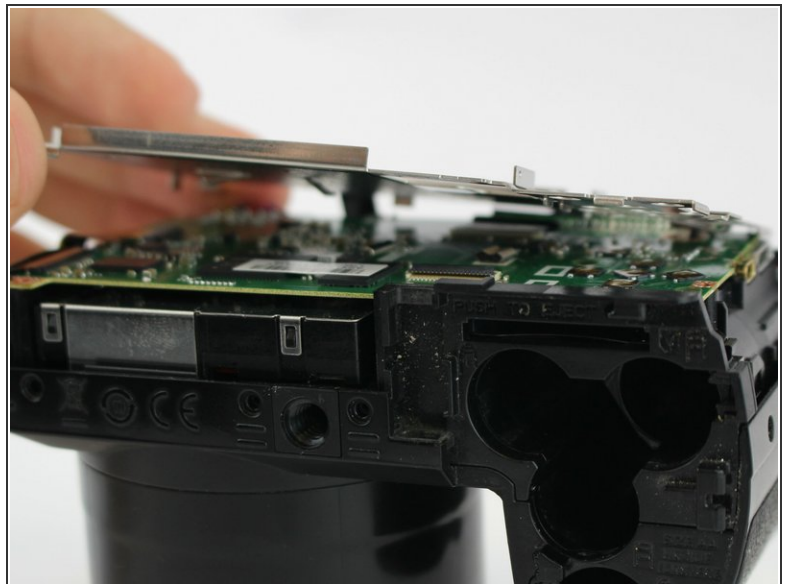
Step 11 — Electromagnetic Shield



- Remove the four 4.5 mm JIS #000 screws.

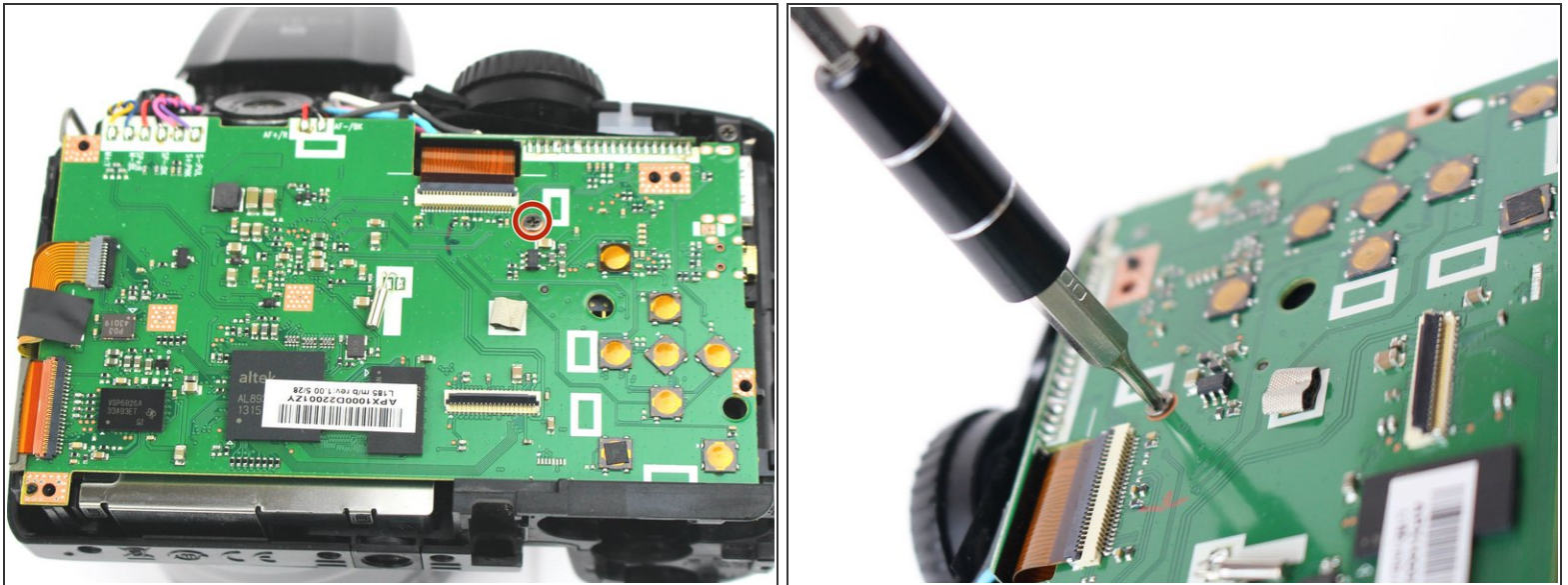
⚠ The electromagnetic shield is attached onto the motherboard please proceed with caution when removing screws.

Step 12



- Gently pull the shield off the motherboard and set it aside.

Step 13 — Motherboard



⚠ When removing the screw attached to the motherboard, proceed slowly and apply only light pressure.

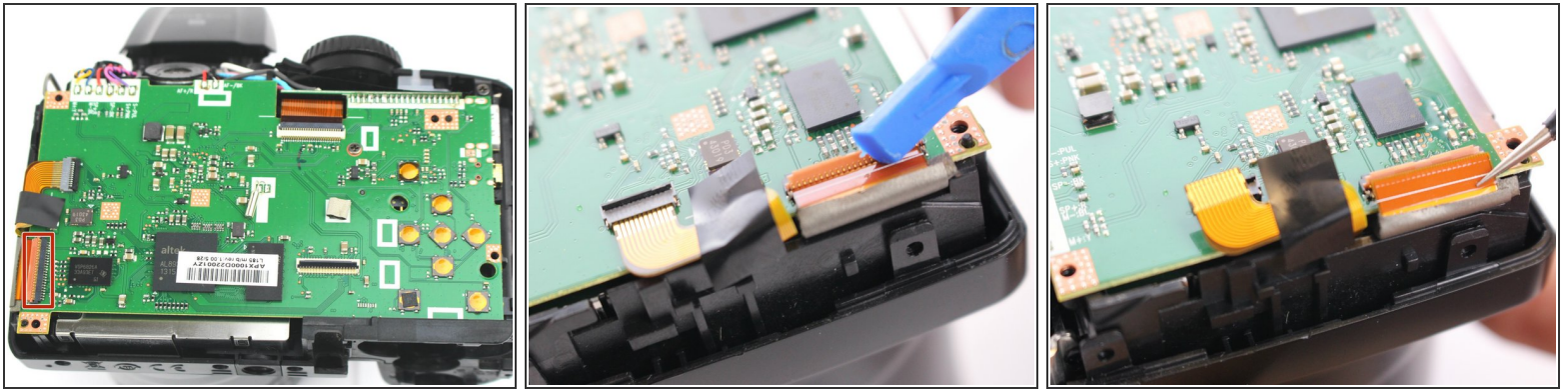
- Remove the 4.5 mm JIS #000 screw.

Step 14



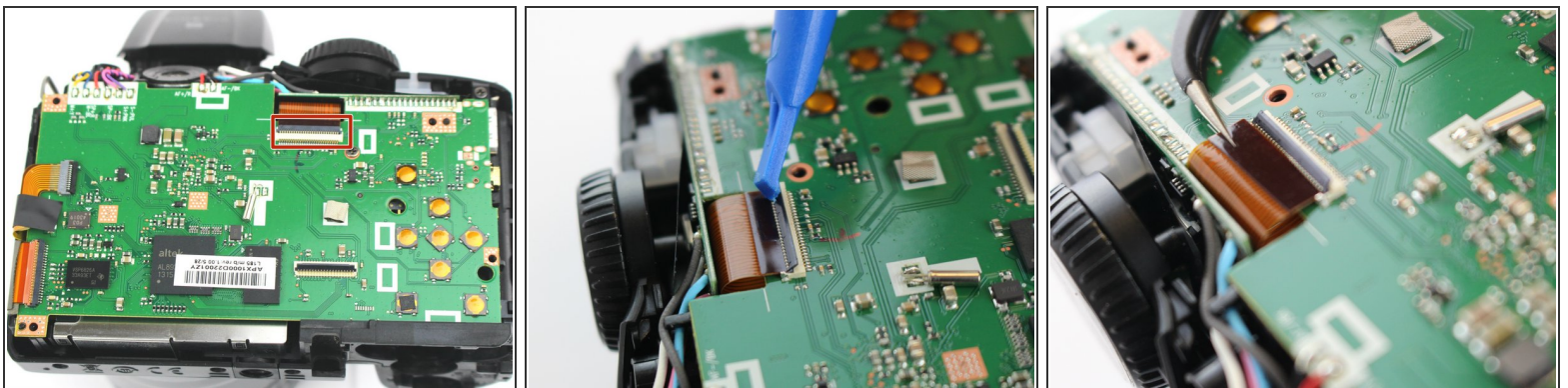
- Remove the electrical tape off the ZIF cable using tweezers.
- Gently tilt the the lock for the ZIF cable attached to the motherboard with a plastic removal tool.
- Pull the ZIF cable from motherboard using tweezers.

Step 15



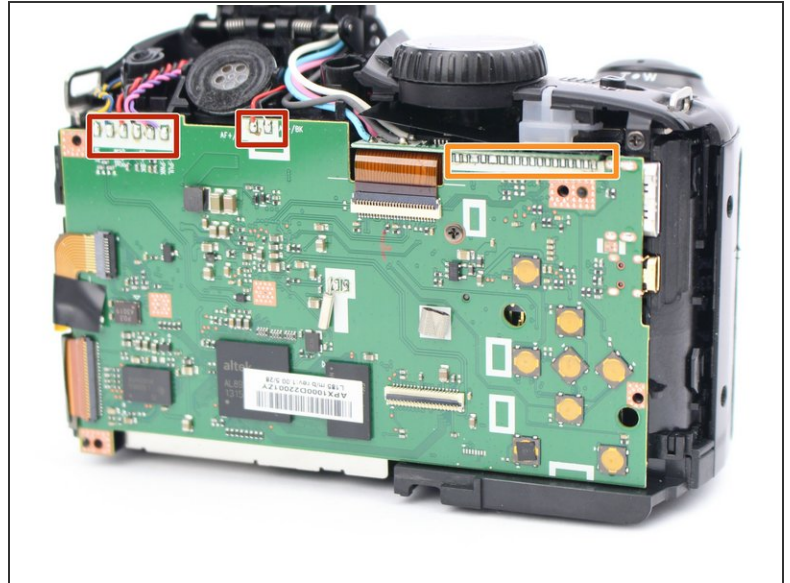
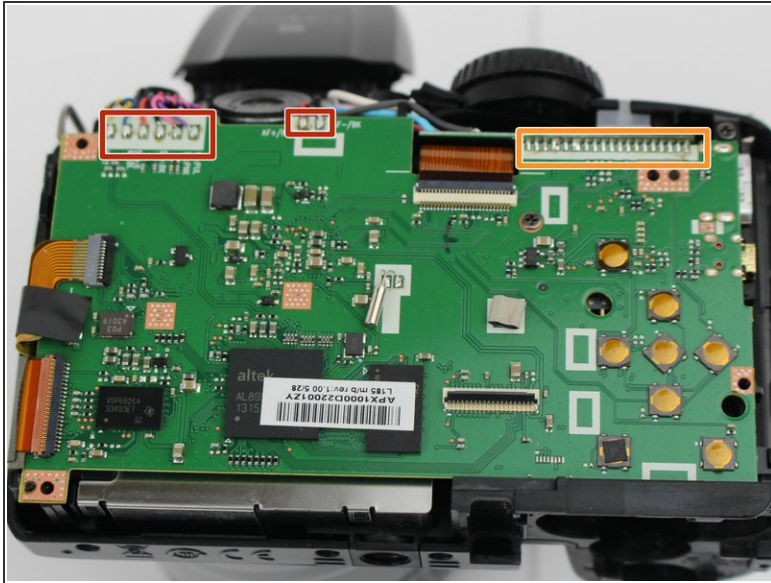
- Gently tilt the the lock for the ZIF cable attached to the motherboard with a plastic removal tool.
- Pull the ZIF cable from motherboard using tweezers.


Step 16



- Gently tilt the the lock for the ZIF cable attached to the motherboard with a plastic removal tool.
- Pull the ZIF cable from motherboard using tweezers.

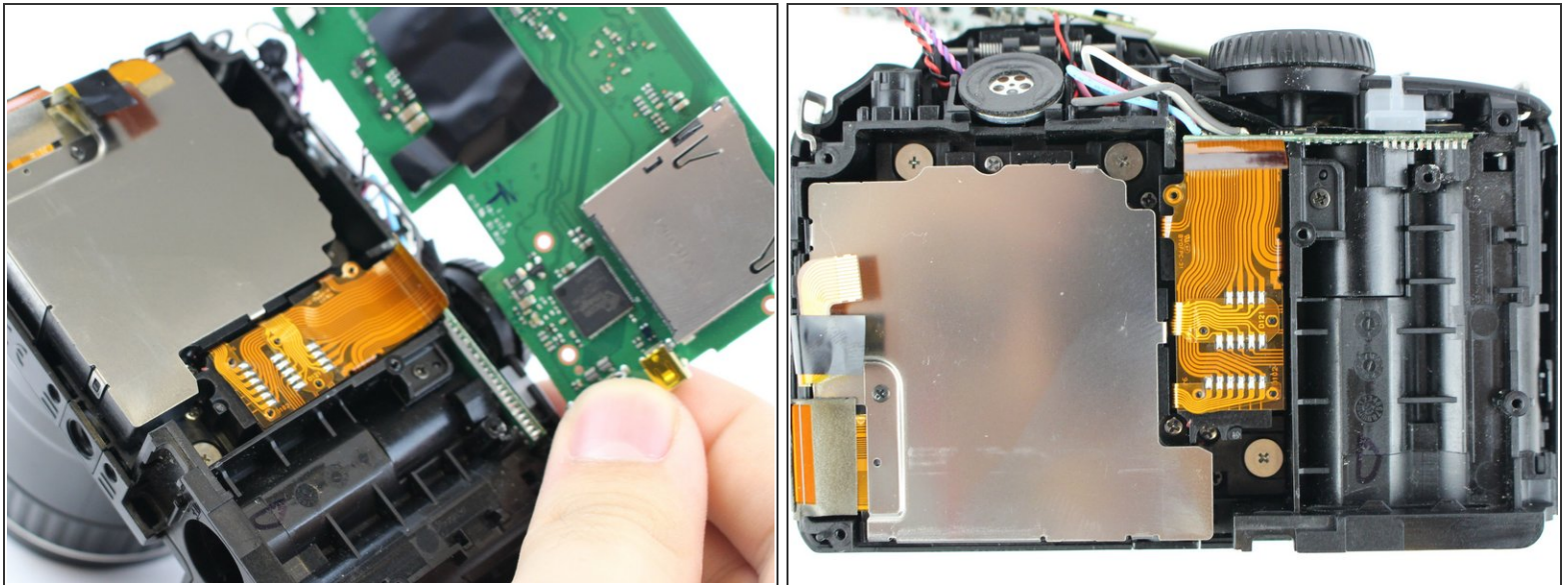
Step 17



 There are two sections where wires are soldered onto the motherboard. There is also a third section where the motherboard and camera are soldered together. Please follow all safety precautions when desoldering.

- In order to free the motherboard, detach the wires by desoldering.
- Detach the soldering between the camera and motherboard by desoldering.
- For instructions on desoldering see [How To Solder and Desolder Connections](#)

Step 18



- Gently pull the motherboard off and set it aside.

To reassemble your device, follow these instructions in reverse order.