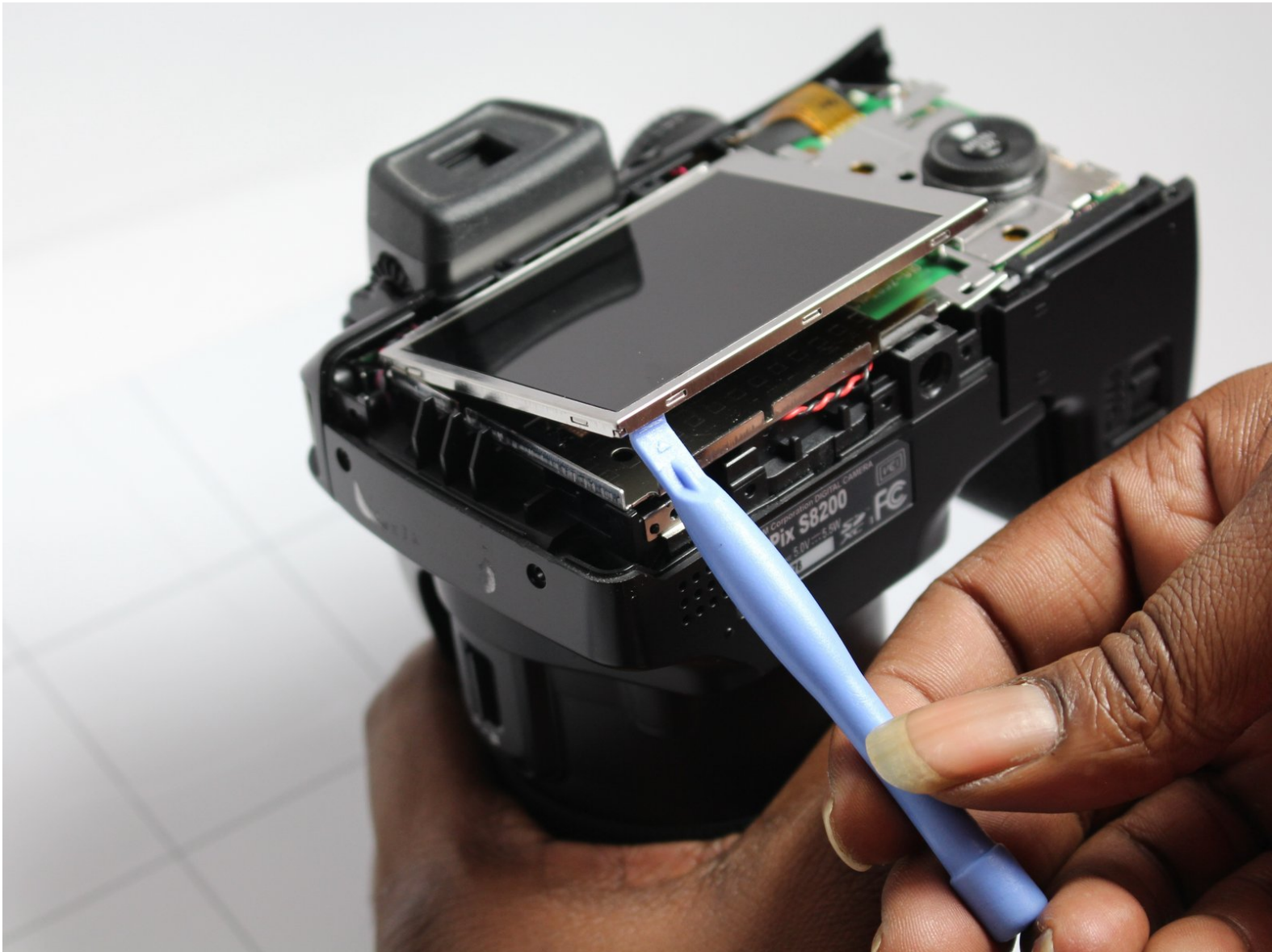




Fujifilm FinePix S8200 LCD Screen Replacement

This guide shows how to replace the LCD screen on the Fujifilm FinePix S8200.

Written By: Joseph Kelley



INTRODUCTION

Lots of things could cause your LCD screen to need replacing. Here's how to do it.



TOOLS:

- [Phillips #00 Screwdriver](#) (1)
 - [iFixit Opening Tools](#) (1)
-

Step 1 — Batteries



- Turn the camera upside down so you can access the battery chamber.
- ⚠ Make sure that the camera is powered off before opening the battery chamber. Not doing so could damage your memory card.

Step 2



- Push the battery chamber latch in the direction of the front of the camera. Keeping tension on the latch, slide the battery chamber cover toward the outside of the camera, opening the battery chamber.

Step 3



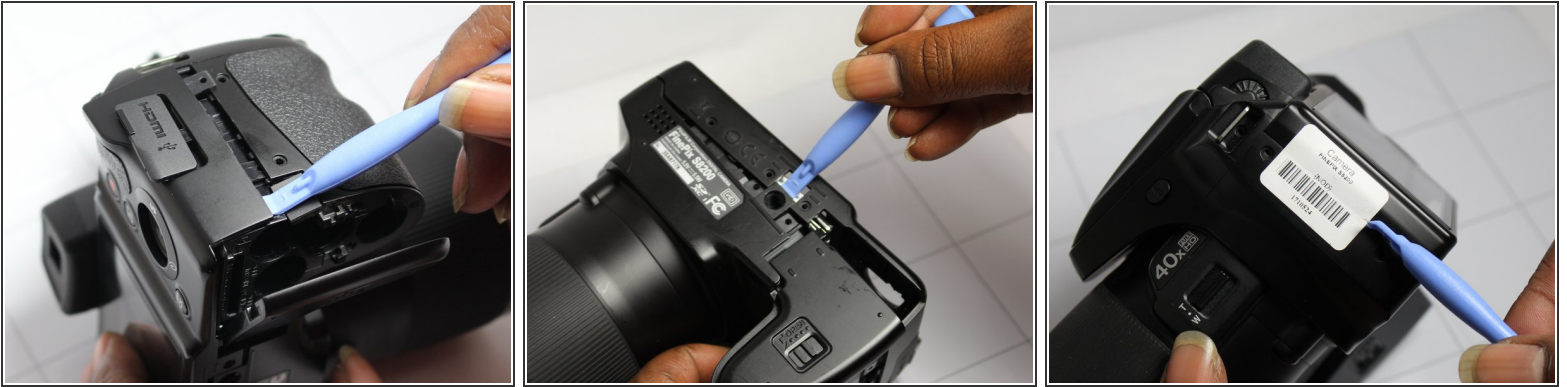
- With the battery chamber open, remove the old batteries.
- ★ When replacing the batteries, remember that the battery orientation is shown by the + and - marks. Each mark indicates which side of the battery faces up in the chamber.

Step 4 — Rear Housing Cover



- Remove the 4mm JIS #00 screws from the sides and bottom of the camera.

Step 5



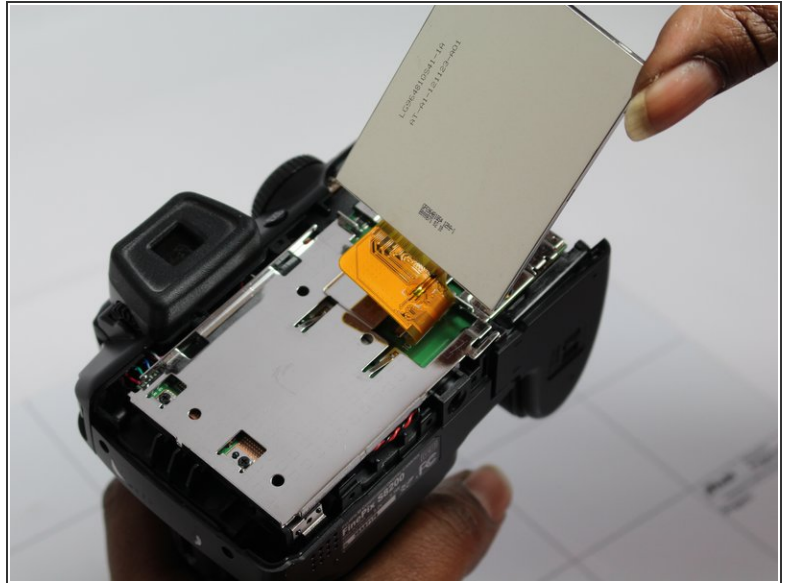
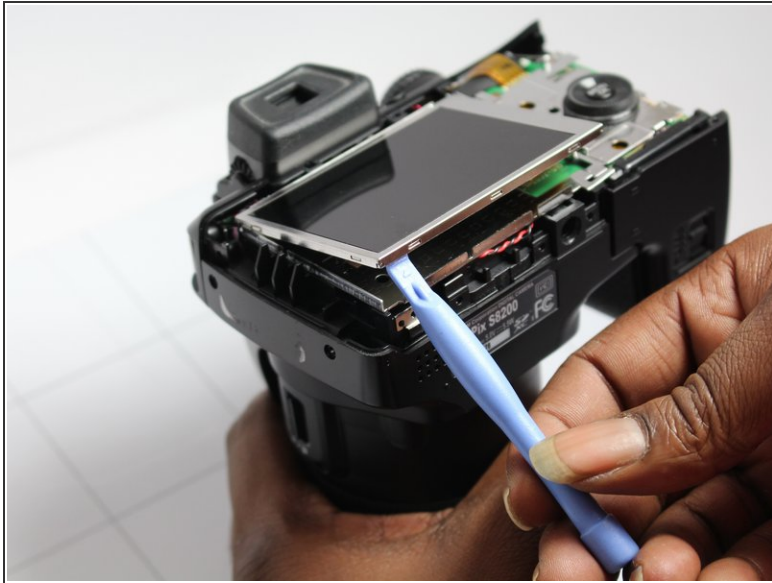
- Carefully pry away the rear housing cover with the plastic opening tool.

Step 6



- Remove the rear housing cover by carefully pulling it away from the camera.

Step 7 — LCD Screen



- Fold back the LCD screen with the plastic opening tool.
- Remove the cable coming from the LCD screen that goes into the motherboard.

To reassemble your device, follow these instructions in reverse order.