



Fujifilm FinePix T500 LCD Screen Replacement

Learn how to replace your broken or malfunctioning LCD screen with a new one.

Written By: George Lindner



INTRODUCTION

The LCD screen is required to operate your camera. If yours is not working, it needs to be replaced. This guide will show you how to do that.



TOOLS:

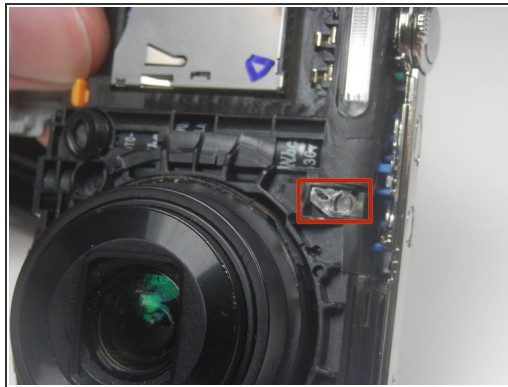
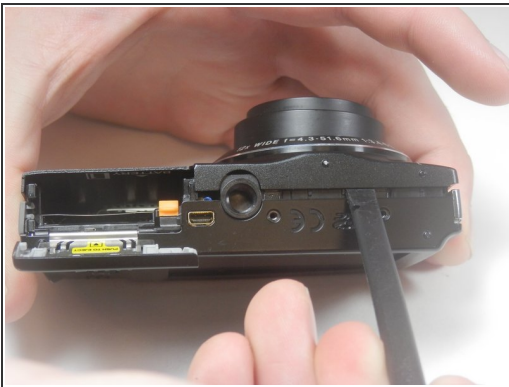
- [Phillips #00 Screwdriver](#) (1)
 - [Spudger](#) (1)
-

Step 1 — LCD Screen



- Unscrew the six 3.5mm Philips head from the outer casing.

Step 2



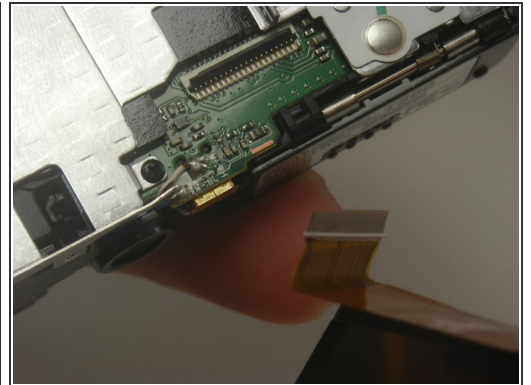
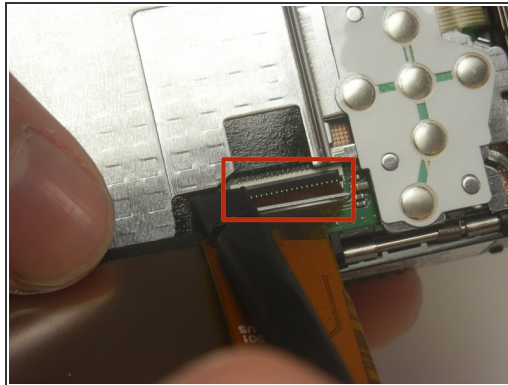
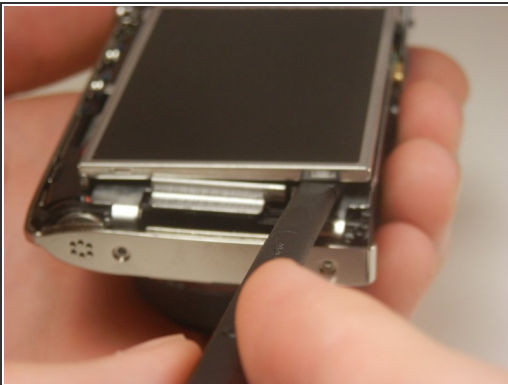
- Open the battery chamber and remove the battery.
- Pry the front half of the casing from the camera.
- Be careful that the sensor cover—the small piece of translucent plastic—doesn't fall out of place. Return it to its original location if it does.

Step 3



- Pry the back half of the casing from the camera.
- ⓘ Be careful when maneuvering the camera without the casing on as the LCD screen is not fastened to anything.

Step 4



- Lift the LCD screen out of the camera.
- There is a tab that keeps in place the ribbon that attaches the screen and motherboard. Lift this up using the spudger and disconnect the screen from the motherboard.

To reassemble your device, follow these instructions in reverse order.