



Fujifilm FinePix XP80 Exterior Case Replacement

This guide shows how to remove the exterior case of the Fujifilm FinePix XP80 in order to access the interior and make other repairs or replacements.

Written By: Busra Atalay



INTRODUCTION

This guide shows how to remove the exterior case of the Fujifilm FinePix XP80 in order to access the interior and make other repairs or replacements.



TOOLS:

- [iFixit Opening Tools](#) (1)
 - [Phillips #000 Screwdriver](#) (1)
-

Step 1 — Exterior Case



- Using a Phillips PH000 bit, remove the five 2mm screws on the bottom of the camera.

Step 2



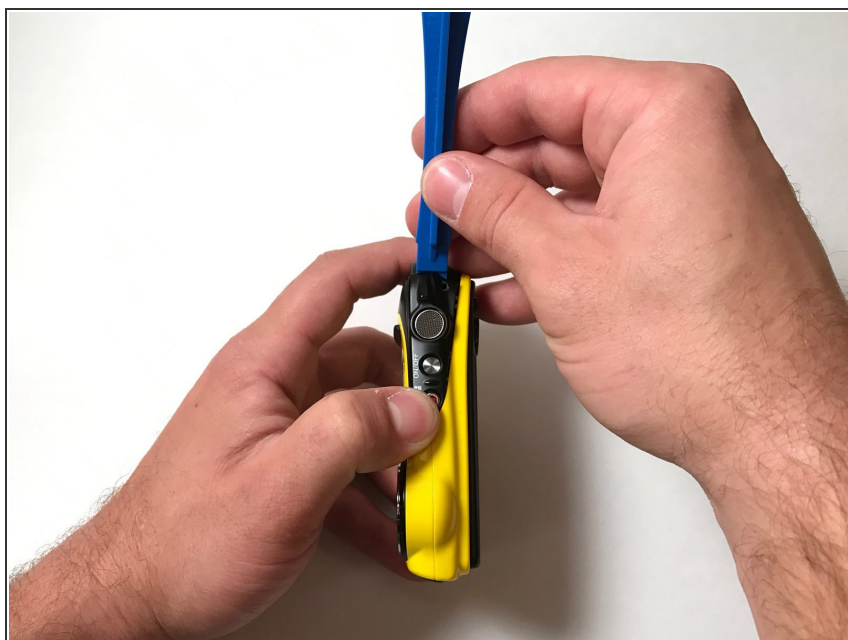
- Using a H1.3 hex head bit, remove the two 2mm screws from the top of the camera.

Step 3



- Using a H1.3 hex head bit, remove the two 2mm screws on the side of the camera.

Step 4



- Using a plastic opening tool, gently pry up the edge of the button case, located at the top of the camera, until it unclips.

Step 5



- Gently pry the side area of the case apart.

Step 6



- Continue using the opening tool on the bottom of the camera to gently pry the case apart.

Step 7



- Use the plastic opening tool to carefully pry the yellow front panel completely away from the camera.
- Use your hands to take off the yellow back panel.

To reassemble your device, follow these instructions in reverse order.