



Fujifilm FinePix XP80 LCD Screen Replacement

Use this guide to replace the LCD on a Fujifilm FinePix XP80.

Written By: Daniela Pesci



INTRODUCTION

A malfunctioning LCD screen, whether it simply won't turn on, dead pixels, or some other issue, is a major inconvenience. Use this guide to get it working properly again.

TOOLS:

- [Phillips #000 Screwdriver](#) (1)
 - [iFixit Opening Tools](#) (1)
-

Step 1 — Battery



- Open the side panel which houses the battery compartment. Press the center button down and twist the dial.

Step 2



- Release the battery from its secured position by pulling the orange tab back. The battery can then be removed from its compartment.

Step 3 — Exterior Case



- Using a Phillips PH000 bit, remove the five 2mm screws on the bottom of the camera.

Step 4



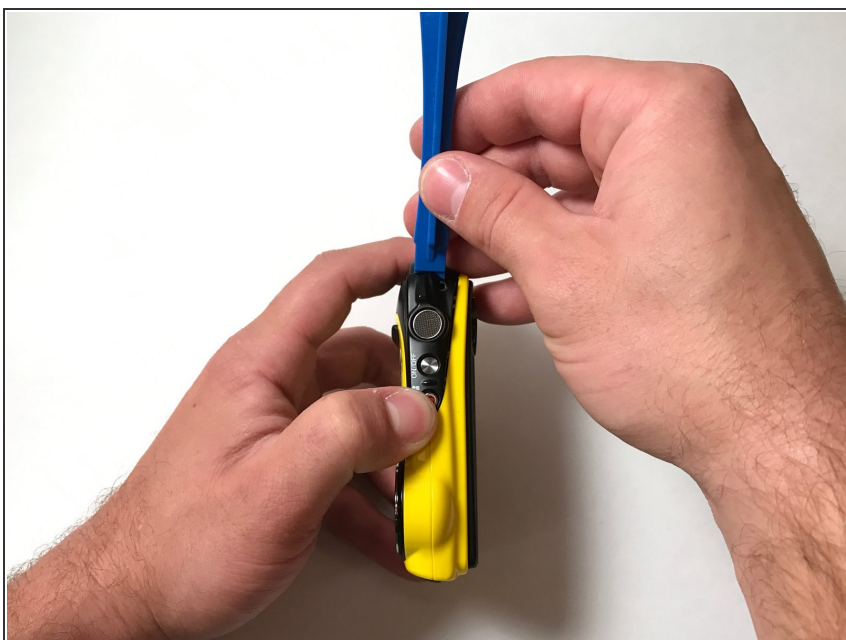
- Using a H1.3 hex head bit, remove the two 2mm screws from the top of the camera.

Step 5



- Using a H1.3 hex head bit, remove the two 2mm screws on the side of the camera.

Step 6



- Using a plastic opening tool, gently pry up the edge of the button case, located at the top of the camera, until it unclips.

Step 7



- Gently pry the side area of the case apart.

Step 8



- Continue using the opening tool on the bottom of the camera to gently pry the case apart.

Step 9



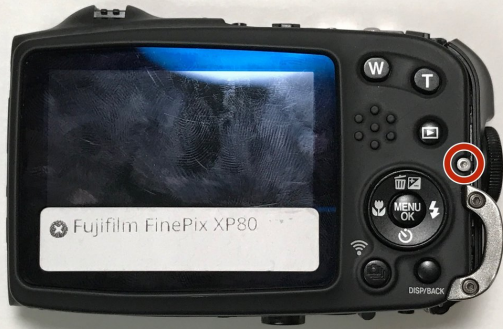
- Use the plastic opening tool to carefully pry the yellow front panel completely away from the camera.
- Use your hands to take off the yellow back panel.

Step 10 — Interior Case



- Using the H1.3 hex head bit, remove the four screws on the front of the camera.

Step 11



- Using the H1.3 hex head bit, remove the screw on the back of the camera.

Step 12



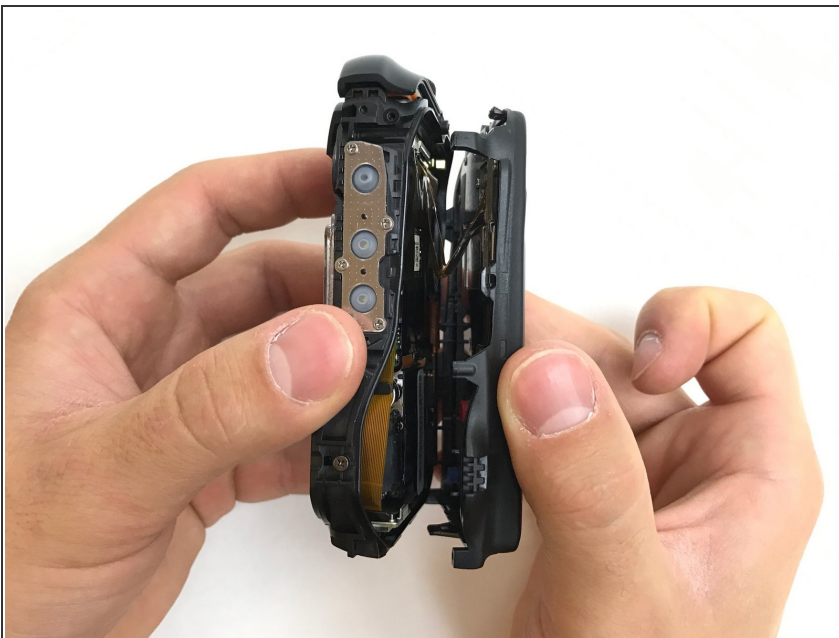
- Open the battery compartment on the side of the camera.
- Using your plastic opening tool, carefully pry the two clips apart as indicated in the photo.

Step 13



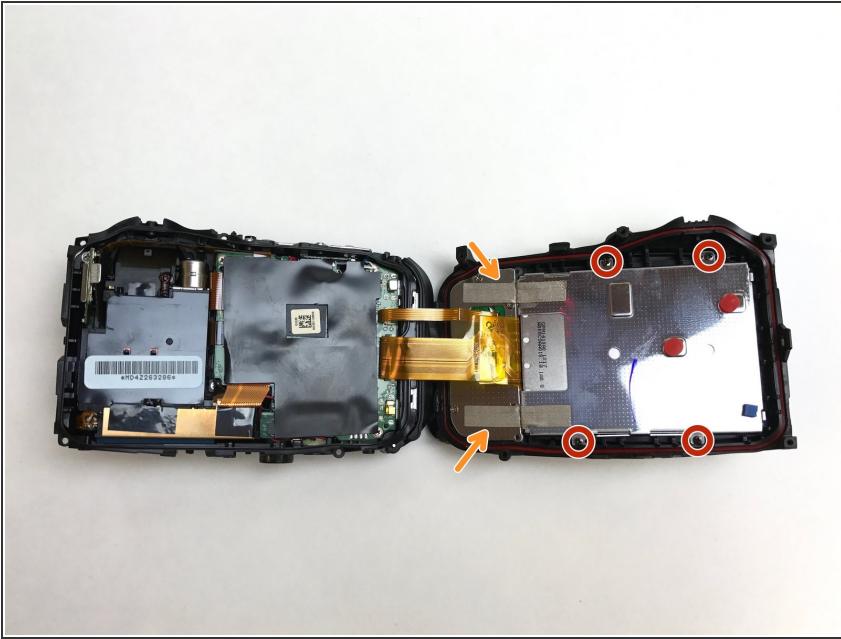
- Unclip the front interior panel from the top, bottom and side of the camera.

Step 14



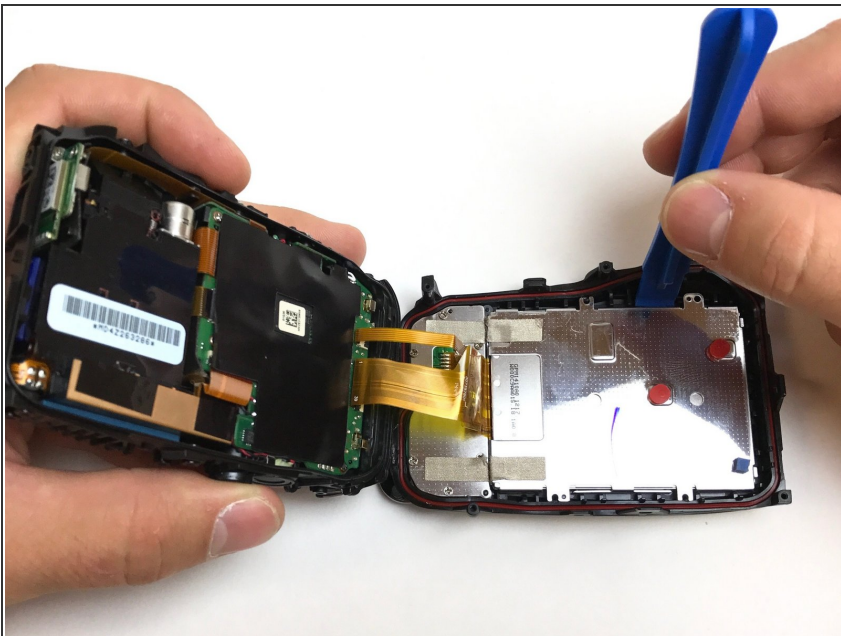
- Gently open the camera, noting the presence of two orange tapes along one side that connect the motherboard to the LCD screen.
- Open the camera like a book and lay both sides flat next to one another, leaving the orange tapes connected.

Step 15 — LCD Screen



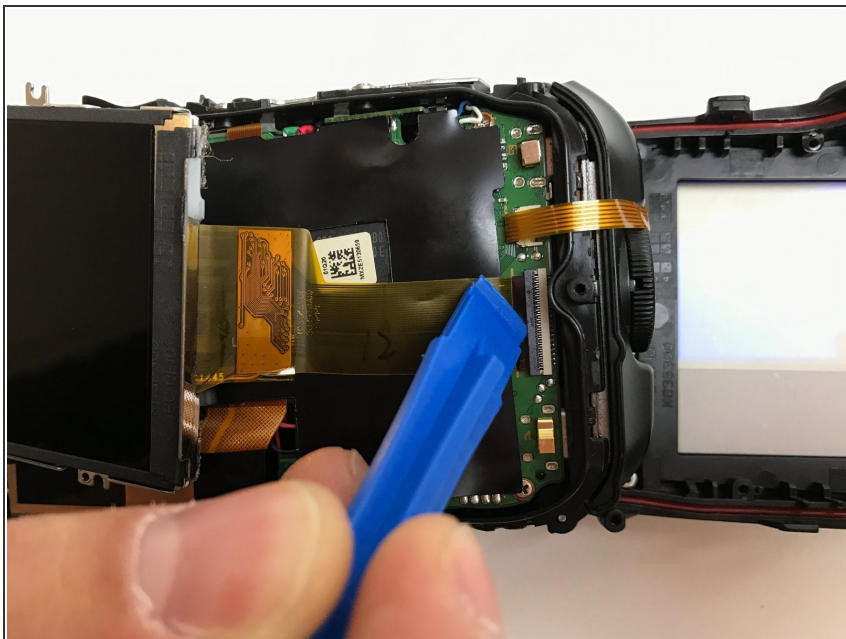
- Once you expose the inside of the camera, use the PH000 Phillips head bit and remove the four screws as shown.
- Carefully remove the tape binding the screen to the camera.

Step 16



- Gently pry the LCD screen from the case, using a plastic opening tool.

Step 17



- Unclip the LCD data line from the motherboard, using the plastic opening tool.

To reassemble your device, follow these instructions in reverse order.