



Fujifilm FinePix Z1 Battery Replacement

Replacing a faulty or old battery with a new one.

Written By: Carra



INTRODUCTION

This guide will teach you how to replace a battery that is faulty or old in the Fujifilm FinePix Z1 camera.

Step 1 — Battery



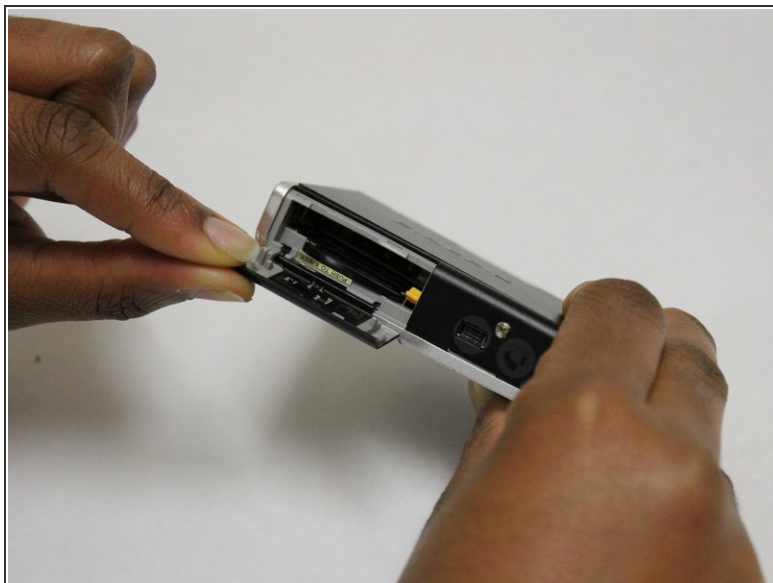
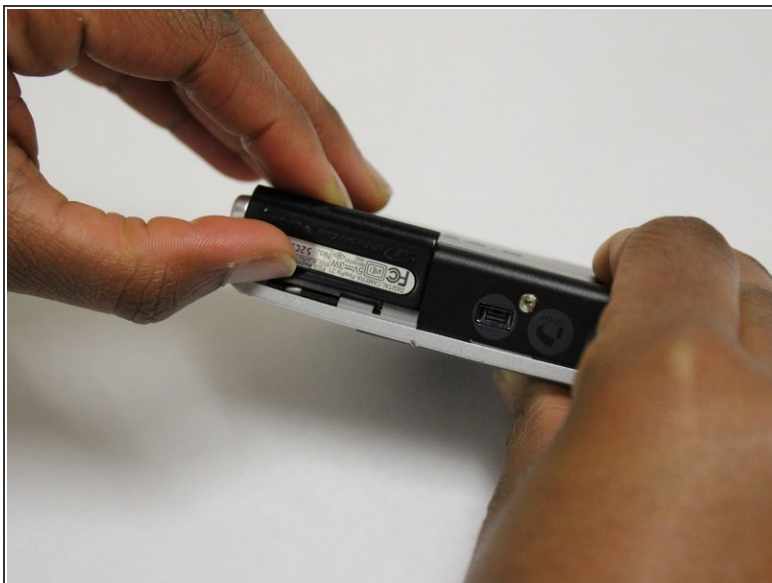
- Make sure the battery on the display screen of the camera is charged. If it is not fully charged, plug into charger and turn the camera on.
- If the battery image on the display screen does not show then you will need to check the battery.

Step 2



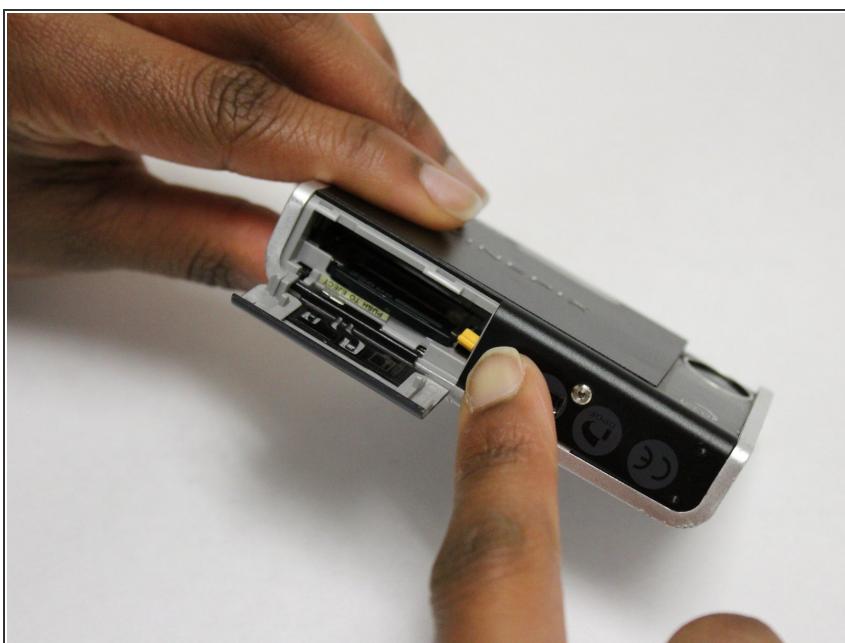
- Turn the camera to the bottom and find the battery access door on the left side.

Step 3



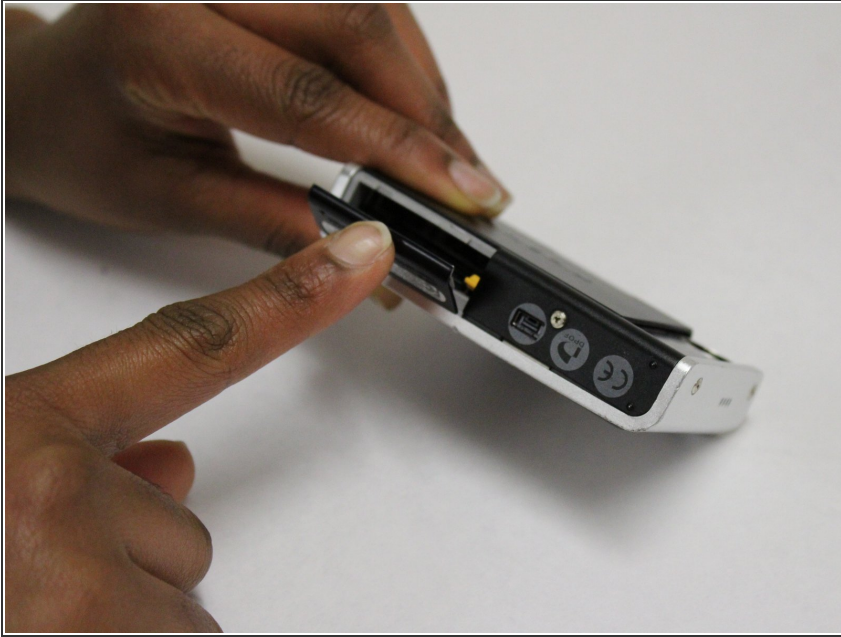
- Open the battery access door by pushing down and up on the spring-hinged door.
- Check that there is no obvious damage or reason for a faulty battery.

Step 4



- Push the yellow tab to eject the battery.

Step 5



- Remove the battery and replace with a new one.

To reassemble your device, follow these instructions in reverse order.