



Fujifilm FinePix Z33WP Teardown

This is a detailed teardown guide of the Fujifilm FinePix Z33WP Camera.

Written By: Aditi Kakkar



INTRODUCTION

This is a detailed teardown guide of the Fujifilm FinePix Z33WP Camera.

Tools required for this teardown : Phillips #00 Screwdriver, 1.5mm Hex Screwdriver

TOOLS:

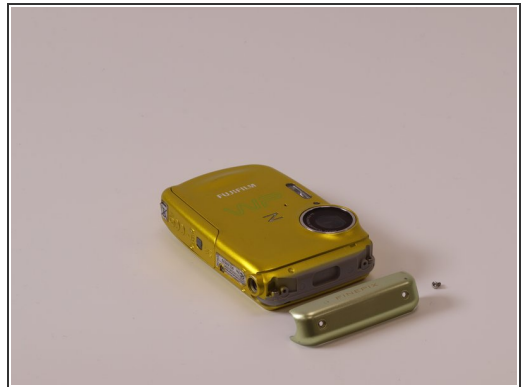
- [Phillips #00 Screwdriver](#) (1)
 - [1.5mm Hex Screwdriver](#) (1)
-

Step 1 — Fujifilm FinePix Z33WP Teardown



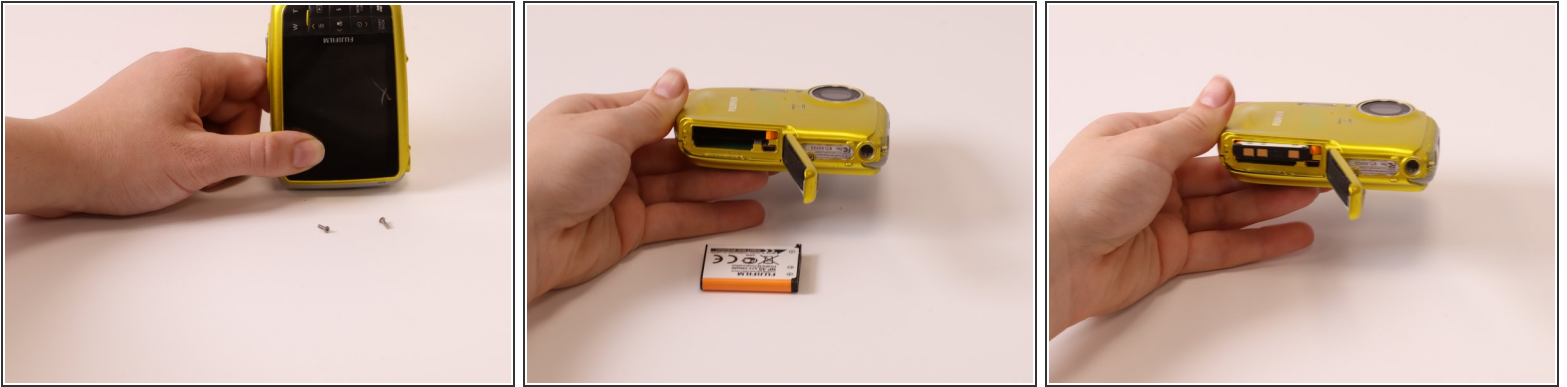
- Take a picture of the product untouched. Front and sides.

Step 2



- Screw 'A' out. (hex screw). Finepix casing off

Step 3



- Screw 'B' out + memory card + battery casing - Phillips pan head

Step 4



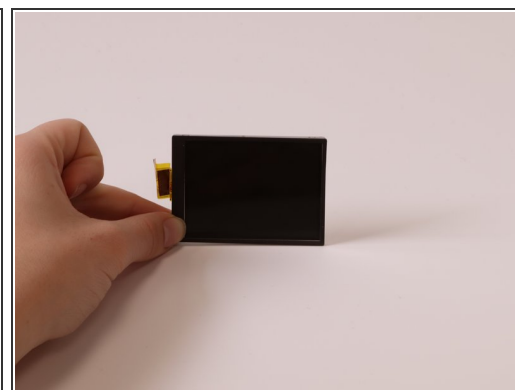
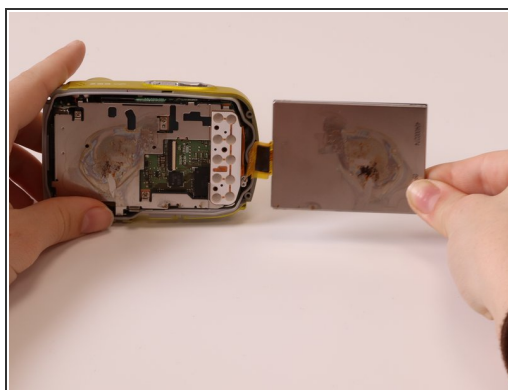
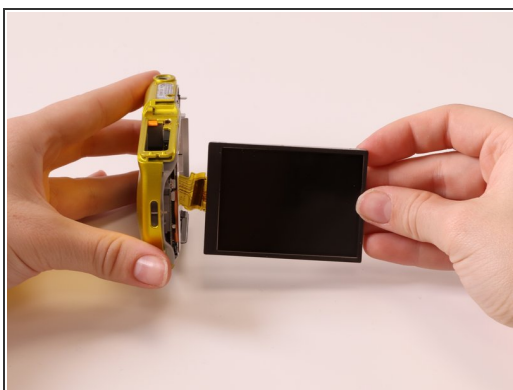
- Screw 'C' out (Phillips head)

Step 5



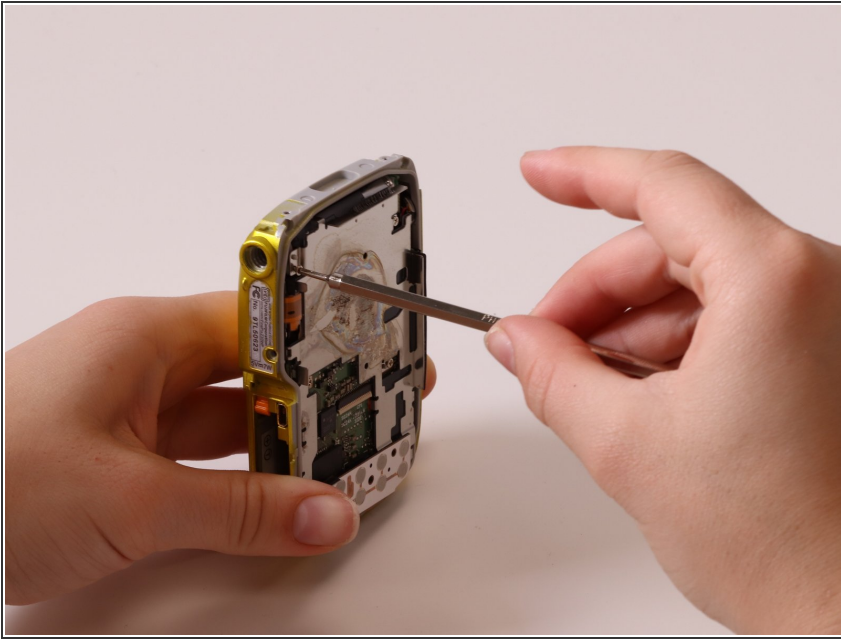
- Screw 'D' out. Back casing off, revealing internal components

Step 6



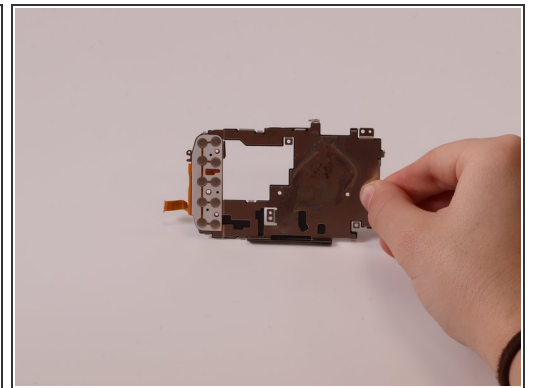
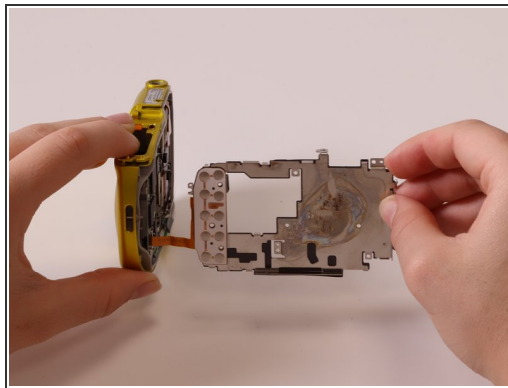
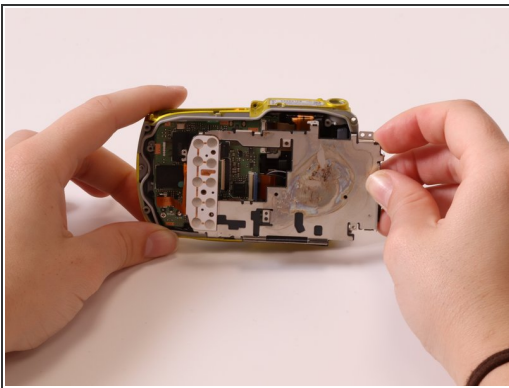
- Screen off. (adhesive)

Step 7



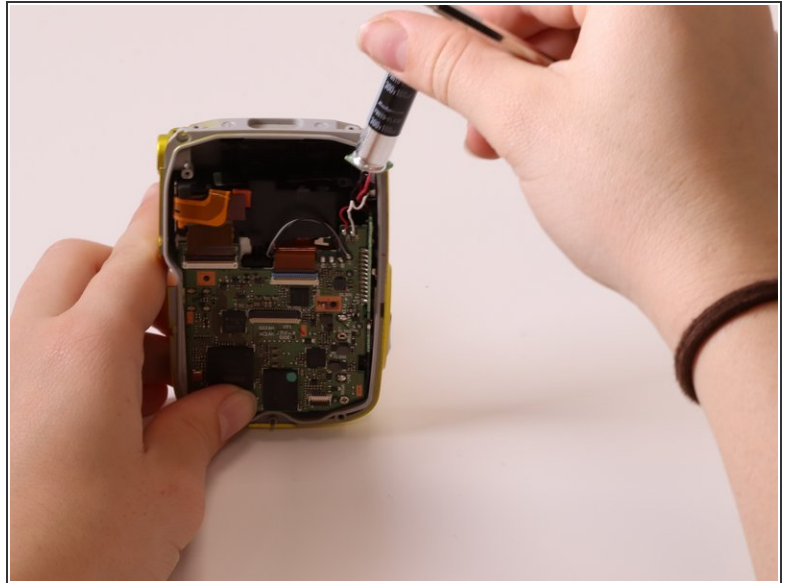
- Screw 'E' x 5 (Phillips head)

Step 8



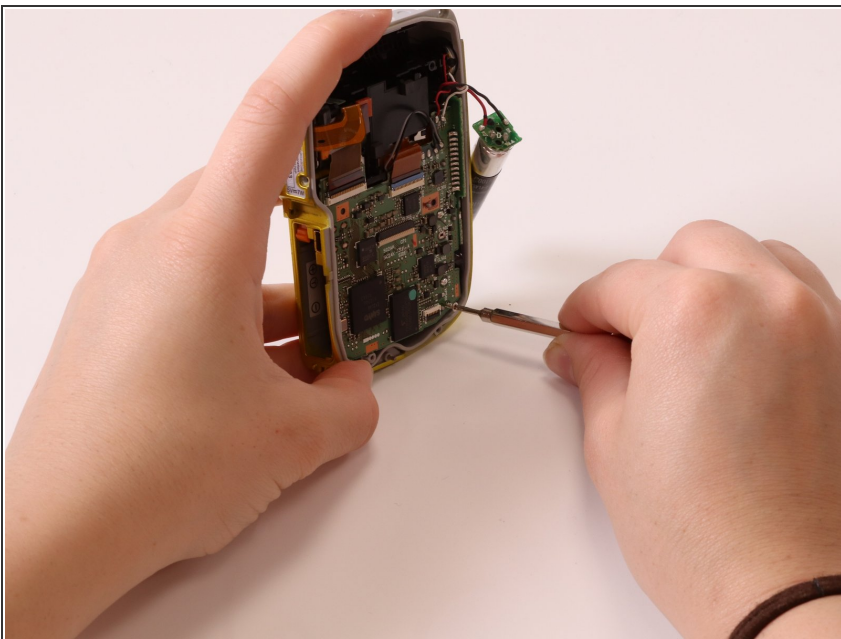
- Metal board out.

Step 9



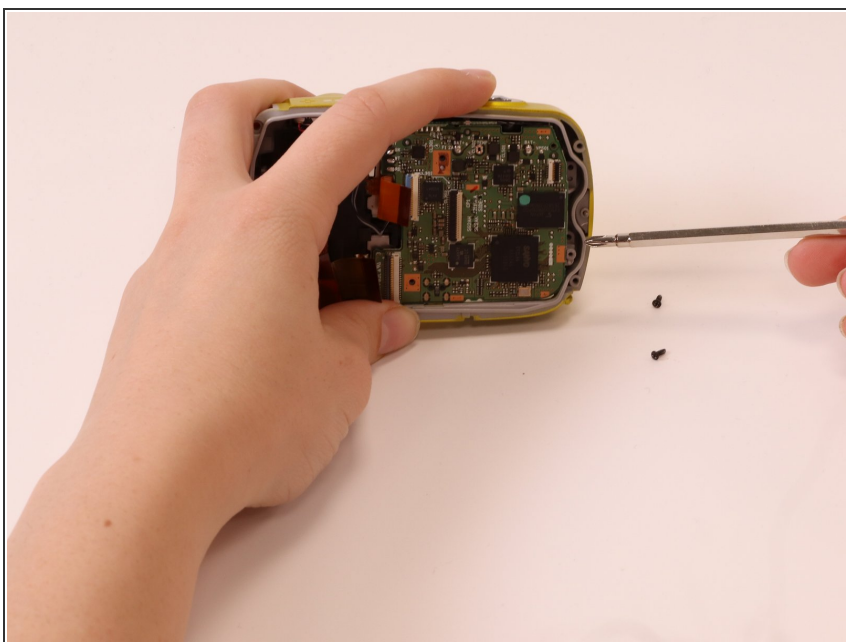
- Capacitor out.

Step 10



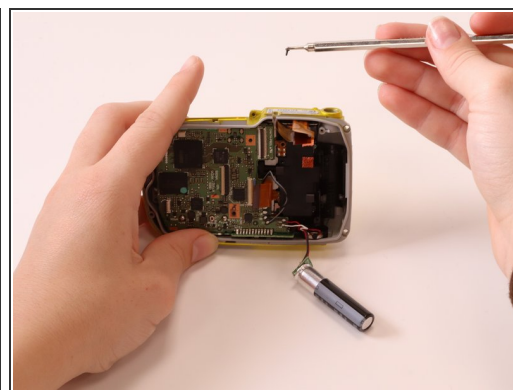
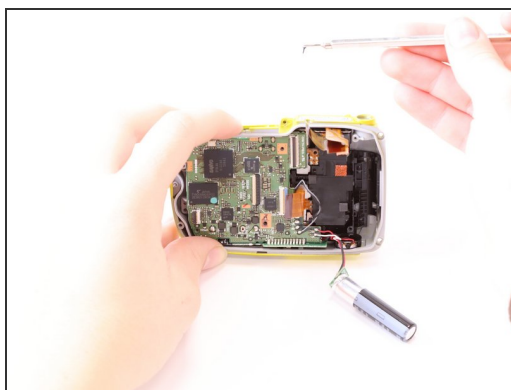
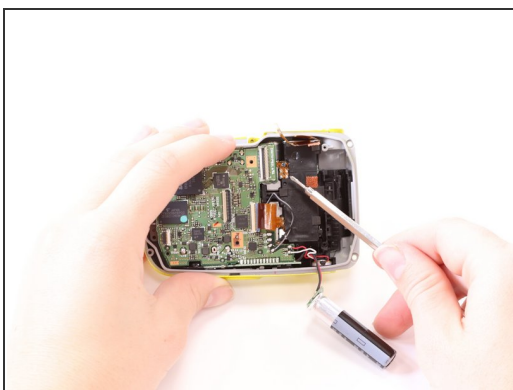
- Screw 'F'. Circuit board.

Step 11



- Screw 'G. Black. Underneath circuit board.

Step 12



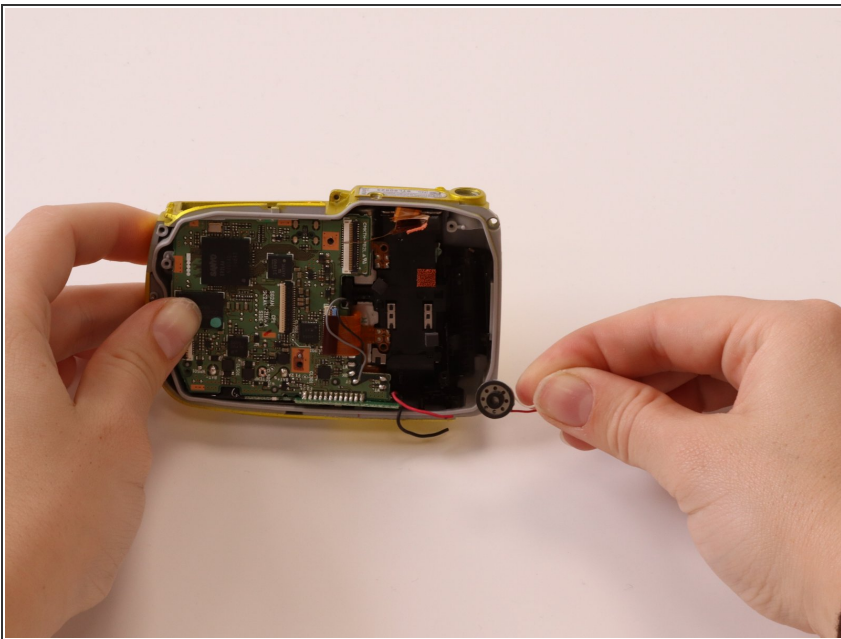
- Screw 'H' for capacitor.

Step 13



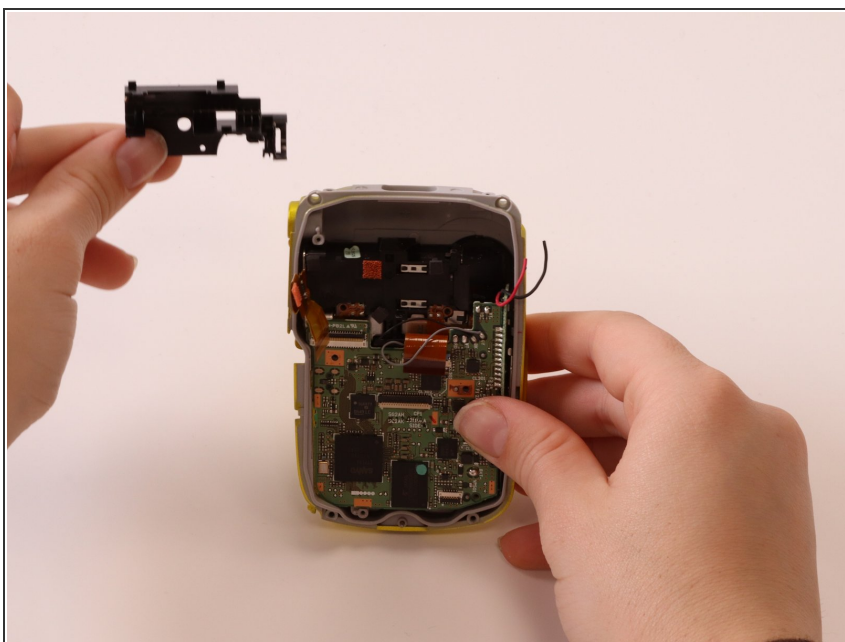
- Screw 'I'

Step 14



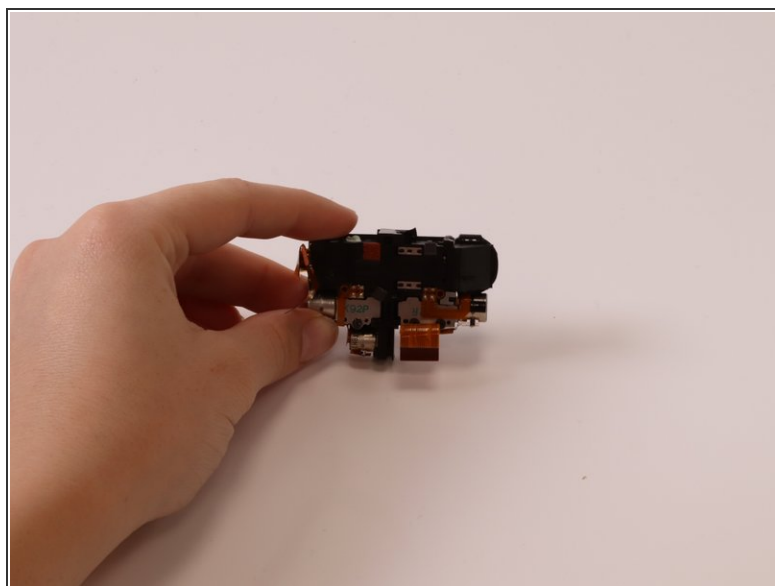
- Speaker bit out.

Step 15



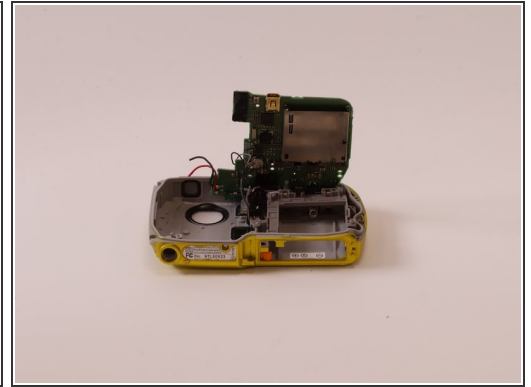
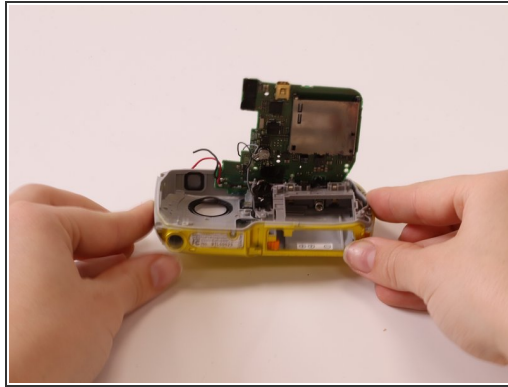
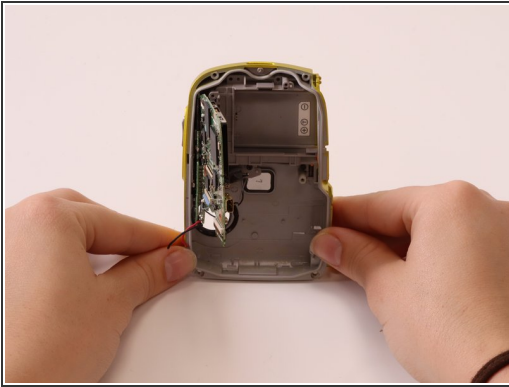
- Screw 'I' and 'J' Plastic battery casing out.

Step 16



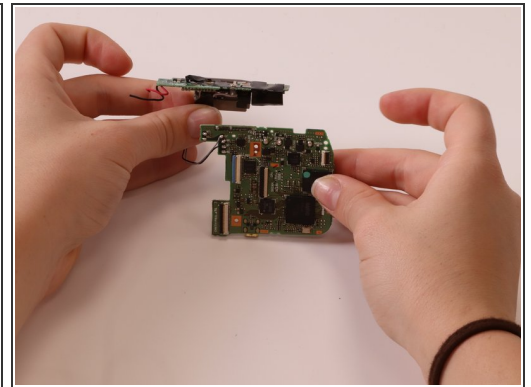
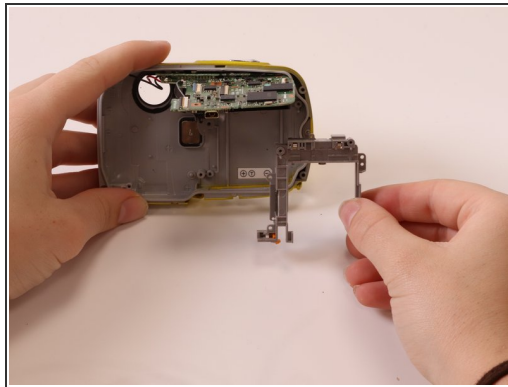
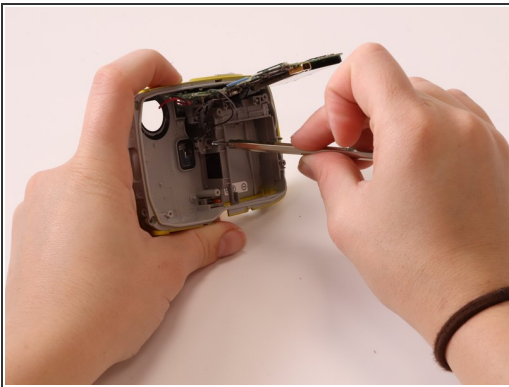
- Camera out.

Step 17



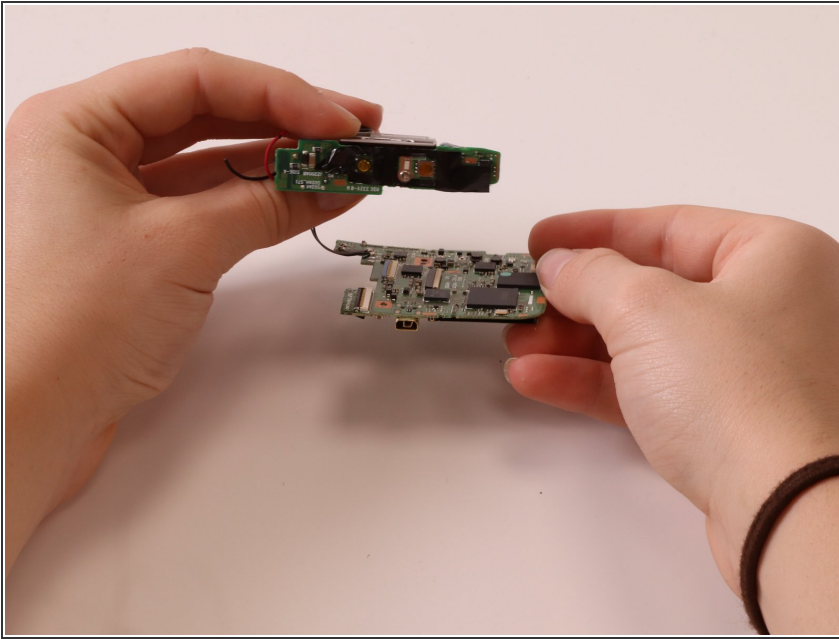
- Detach injection moulded casing that held circuit board and memory card slot.

Step 18 — continuation of step 17



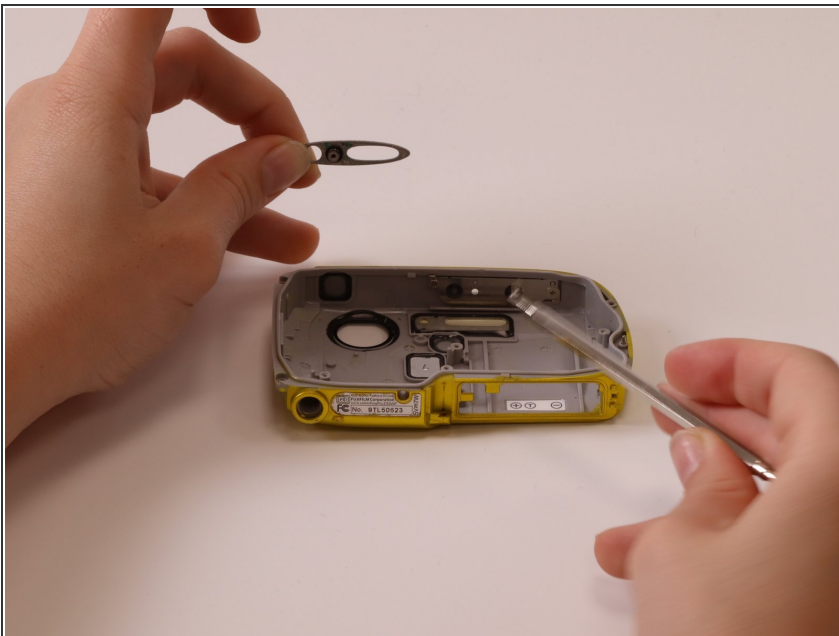
- Detach injection moulded casing that held circuit board and memory card slot. (continued step 17)

Step 19 — continuation of step 17



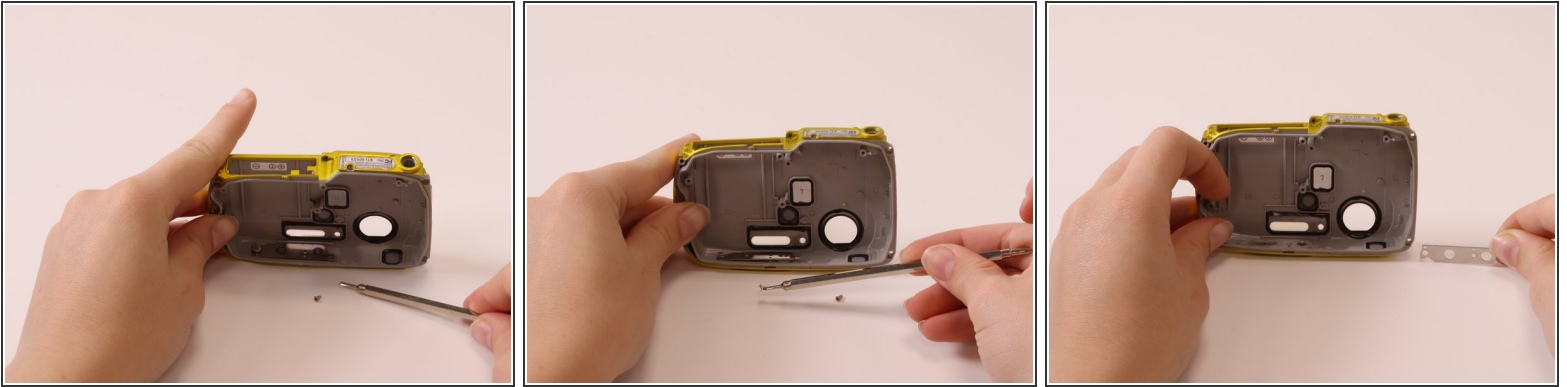
- Detach injection moulded casing that held circuit board and memory card slot. (continued step 17)

Step 20



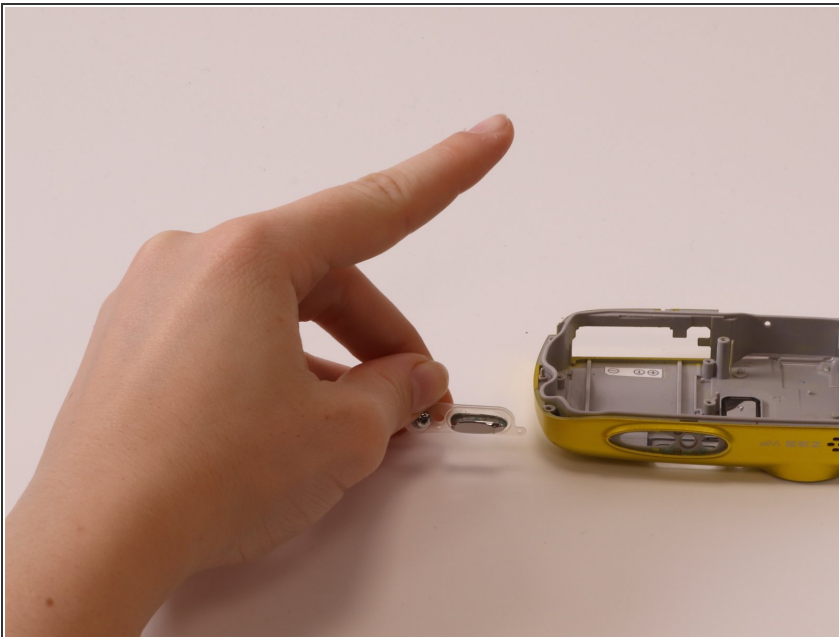
- Screw 'K' casing for on and off button.

Step 21



- Screw 'L' and 'M' screws for on and off buttons + picture buttons (silicone water seals for waterproof type)

Step 22 — continuation of step 21



- Screw 'L' and 'M' screws for on and off buttons + picture buttons (silicone water seals for waterproof type). (continued step 21)