



# Fujifilm FinePix Z90 Battery Replacement Replacement

This guide will show you how to replace the battery the proper way.

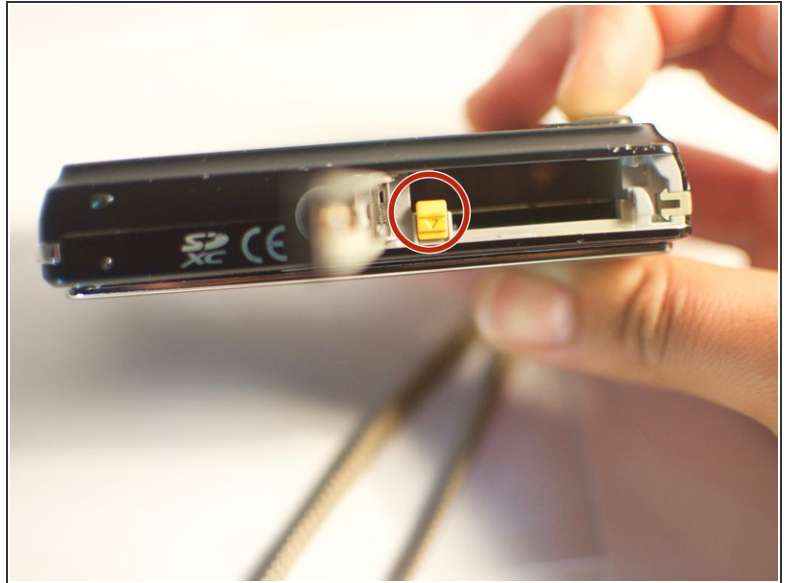
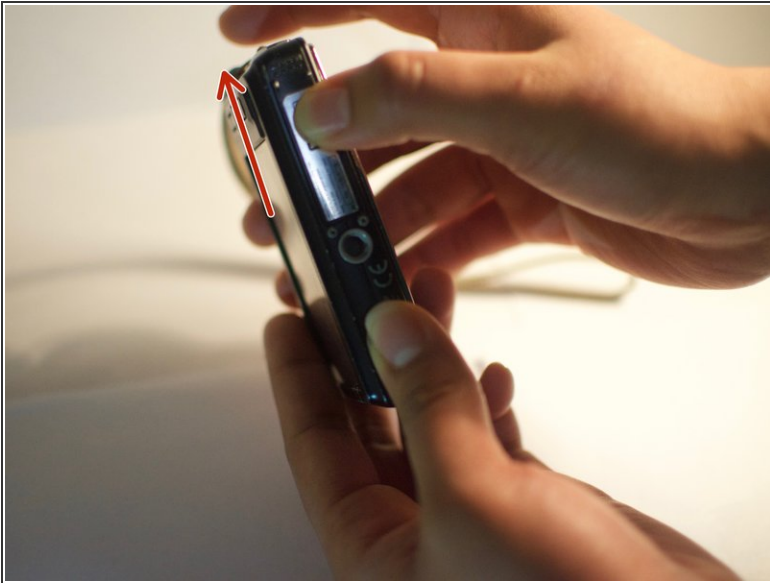
Written By: Sam Clark



## INTRODUCTION

The best way to solve the problem is to replace the battery or check if it is facing in the right direction.

## Step 1 — Battery Replacement



- Open the battery cover that is located on the bottom of the camera on the right side by pushing firmly and sliding it forward. The cover should lift open.
- Press the yellow lever to release the battery. Pull the battery out of the camera.
- Insert the new battery and close the battery cover.

To reassemble your device, follow these instructions in reverse order.