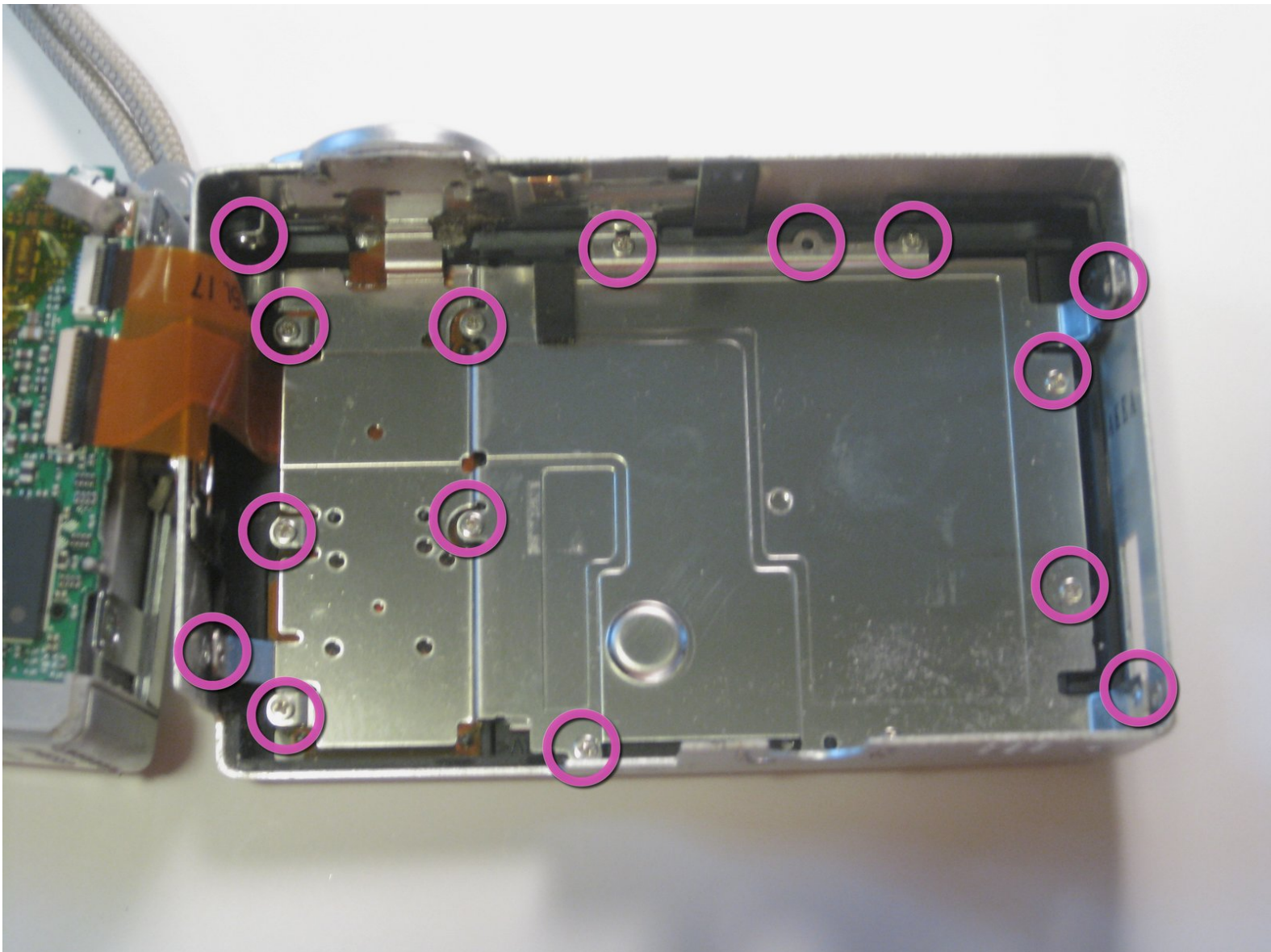




# Fujifilm Finepix F10 6.3 MP LCD Replacement

Install a new LCD to replace an old or broken one.

Written By: Sarah Looper



# INTRODUCTION

A guide on how to take out the many screws located on the inside, metal cover and how to install an LCD.



## TOOLS:

- [Heavy-Duty Spudger](#) (1)
- [Phillips #00 Screwdriver](#) (1)
- [Tri-wing Screwdriver](#) (1)



## PARTS:

- [Back Cover](#) (1)

## Step 1 — Back Cover



- Remove the screws from the bottom of the camera using the tri-wing screwdriver.
- Three 5.4 mm tri-head screws.

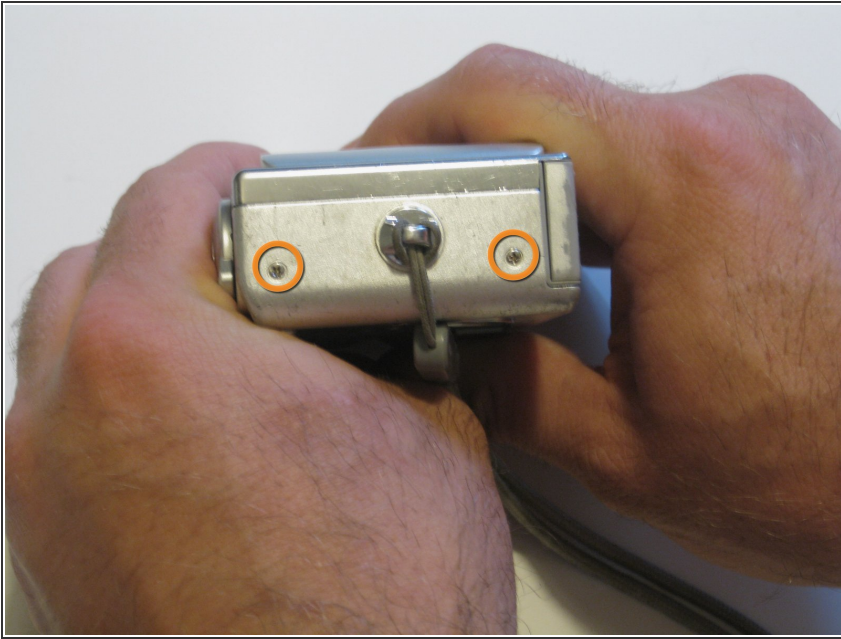
## Step 2



- Remove screws from charger side of camera using the Phillips 00 screwdriver.
- Two 3.3 mm Phillips #00 screws.

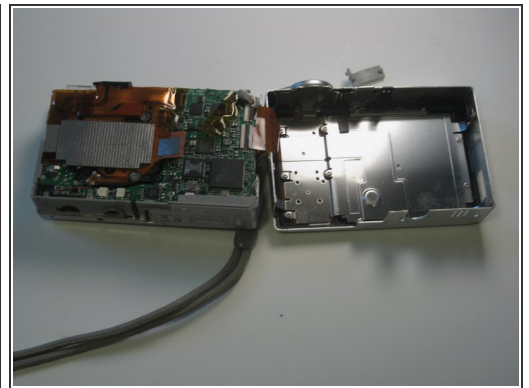
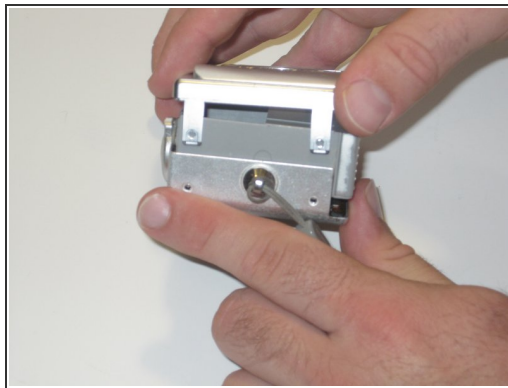
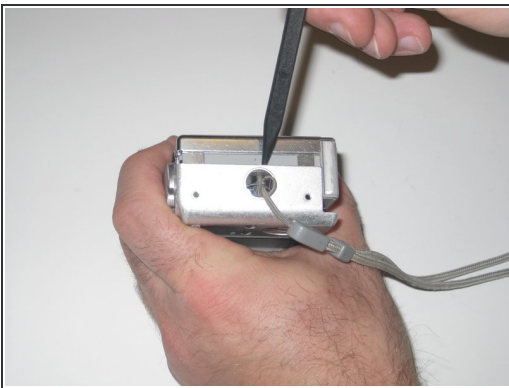


## Step 3



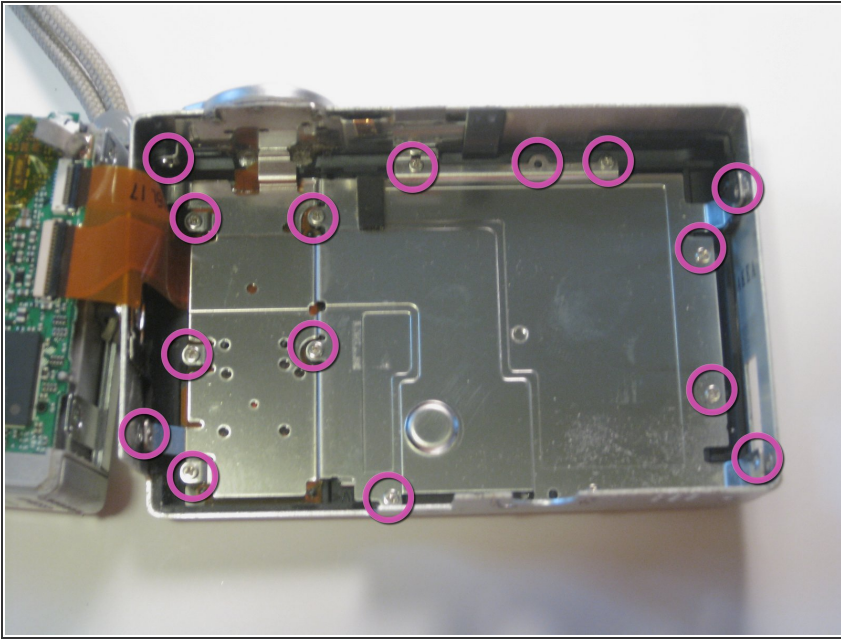
- Remove screws from wrist-strap side of camera using the Phillips 00 screwdriver.
- Two 3.3 mm Phillips #00 screws.

## Step 4



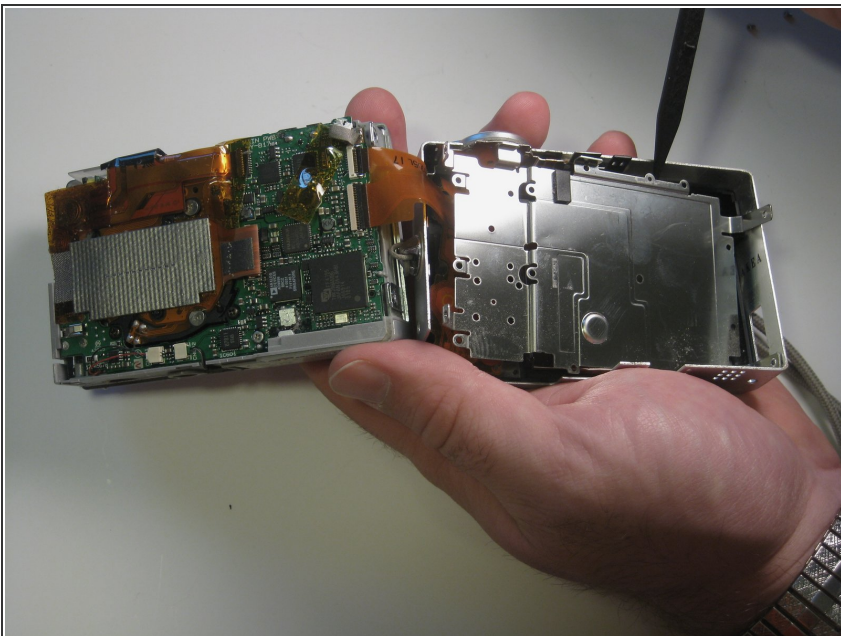
- Separate the front and back casing using the spudger.
- Gently pull apart the two casings.
- Pull the back casing away from the camera.

## Step 5 — LCD



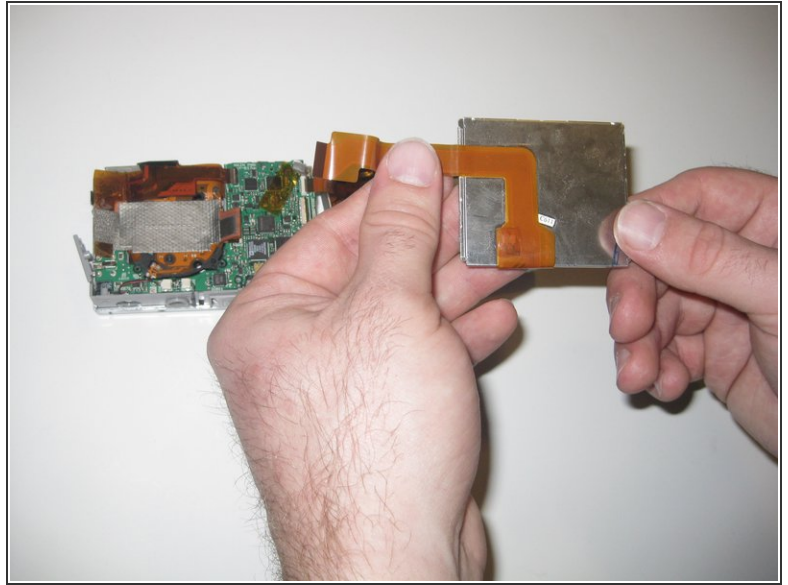
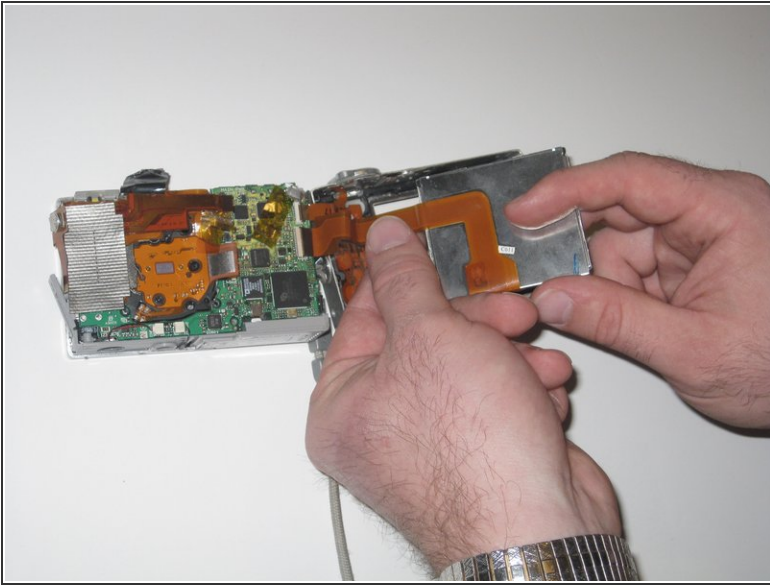
- Remove screws from the casing covering the LCD using the Phillips 00 screwdriver.
- Remove the fifteen 2.9 mm Phillips #00 screws.

## Step 6



- Slide casing out using the spudger.

## Step 7



- Gently remove the LCD display data cable by gripping the end that is connected to the motherboard and pulling out.

To reassemble your device, follow these instructions in reverse order.