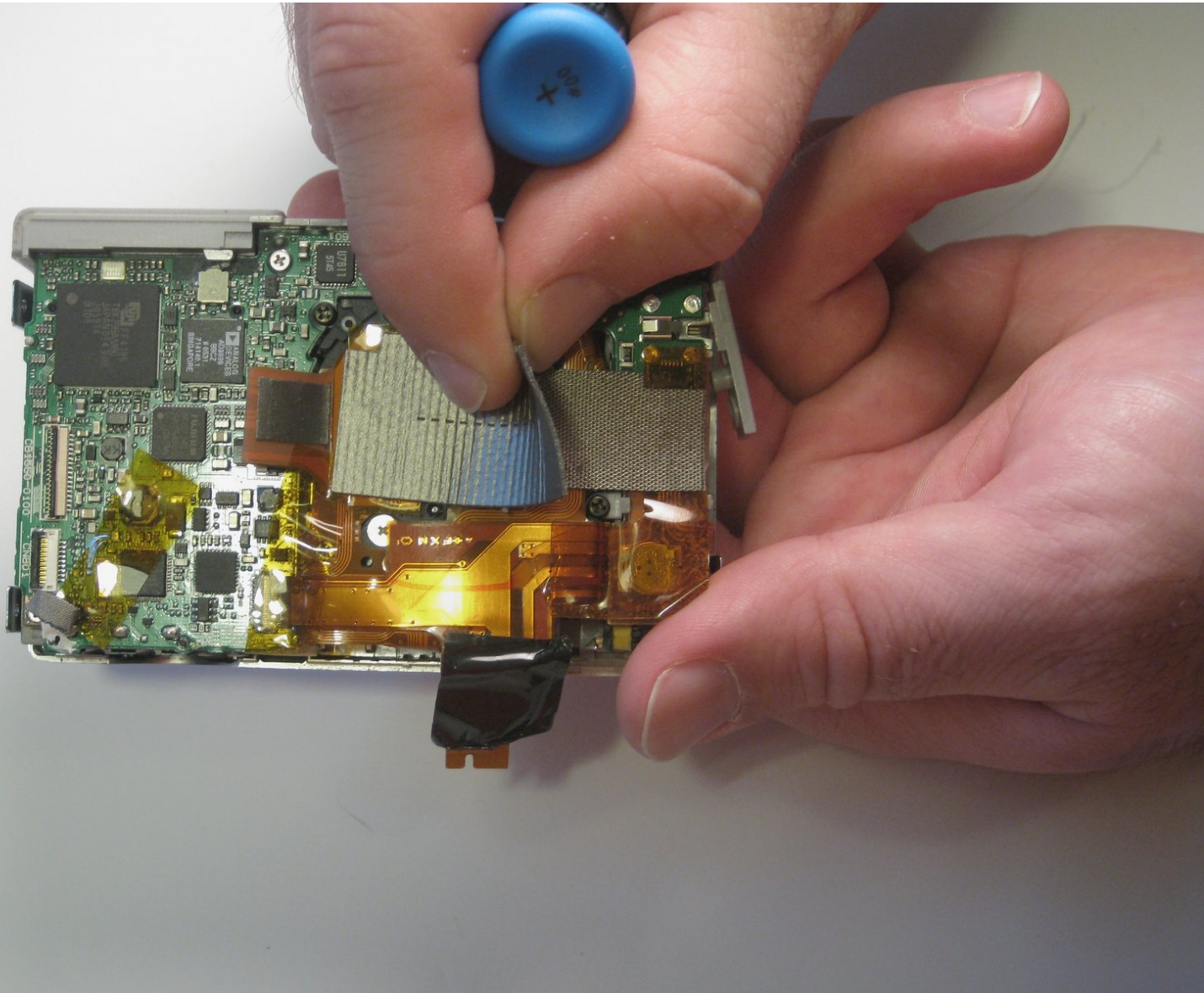




# Fujifilm Finepix F10 6.3 MP Lens Filter Set Replacement

If lens is blurry or not able to zoom, this guide will enable user to replace lens filter set.

Written By: Sarah Looper



---

## INTRODUCTION

The lens filter set is responsible for the correct color filtering of the pictures taken. To get to the filter set, remove the electrowind tape and remove the screws holding the lens filter set in place.

---



### TOOLS:

- [Heavy-Duty Spudger](#) (1)
  - [Phillips #2 Screwdriver](#) (1)
  - [Tri-wing Screwdriver](#) (1)
-

## Step 1 — Back Cover



- Remove the screws from the bottom of the camera using the tri-wing screwdriver.
- Three 5.4 mm tri-head screws.

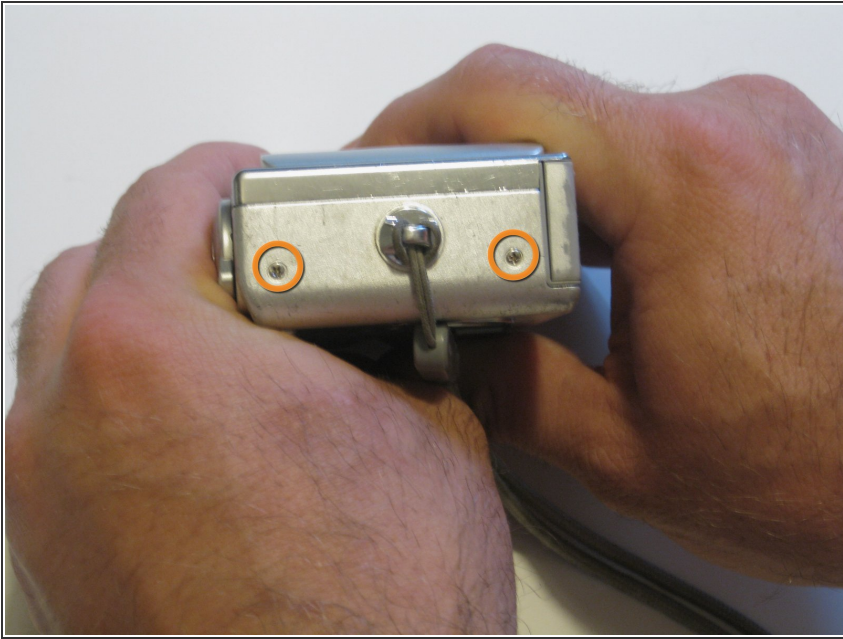
## Step 2



- Remove screws from charger side of camera using the Phillips 00 screwdriver.
- Two 3.3 mm Phillips #00 screws.

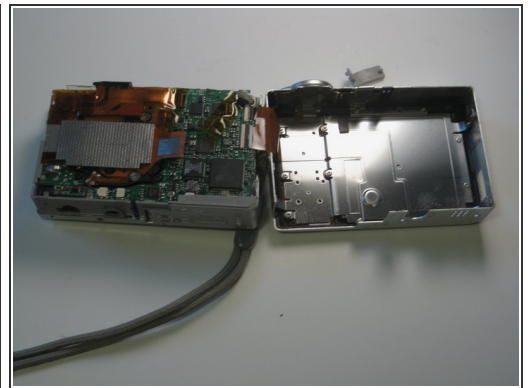
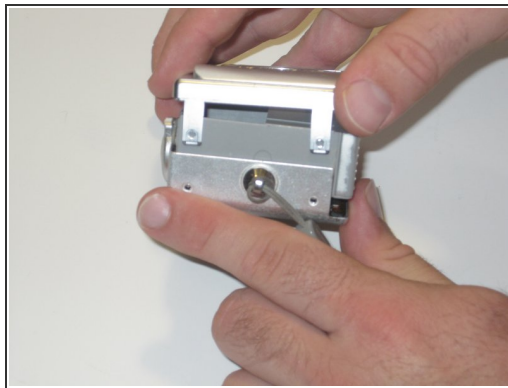
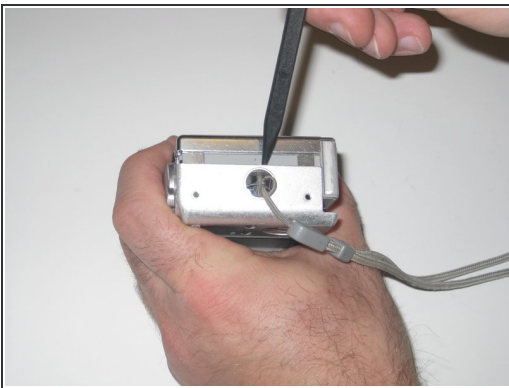


## Step 3



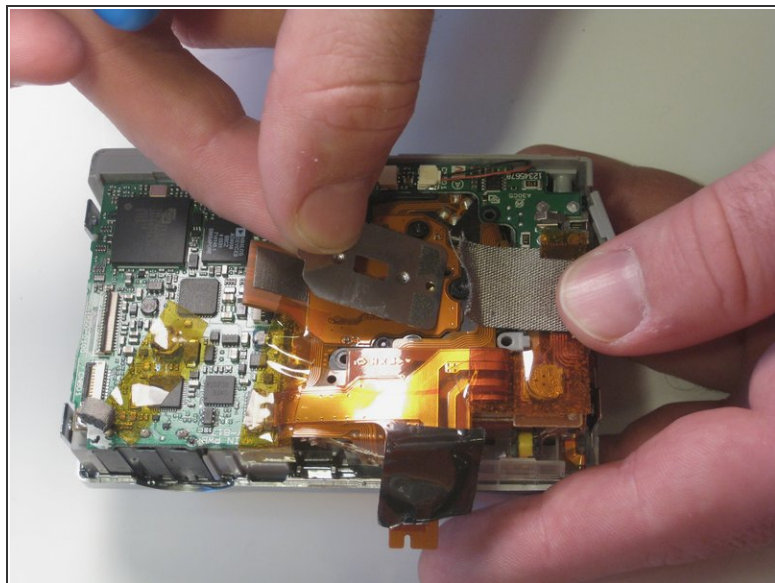
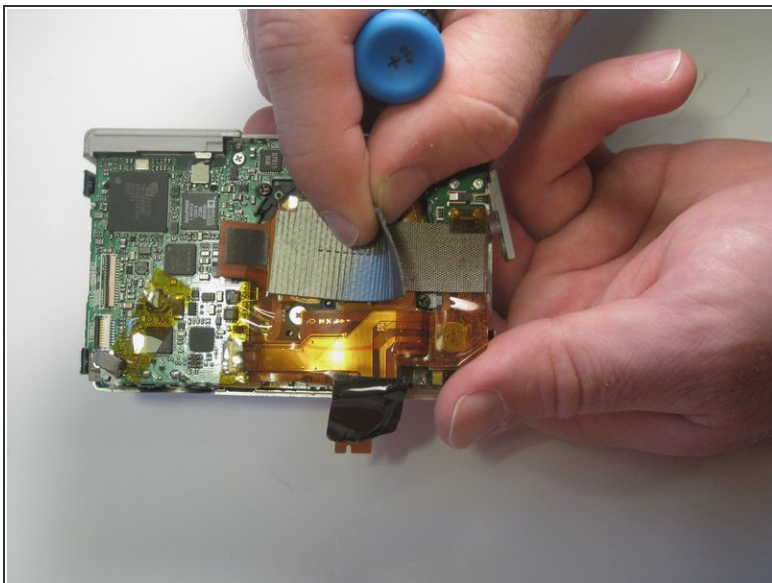
- Remove screws from wrist-strap side of camera using the Phillips 00 screwdriver.
- Two 3.3 mm Phillips #00 screws.

## Step 4



- Separate the front and back casing using the spudger.
- Gently pull apart the two casings.
- Pull the back casing away from the camera.

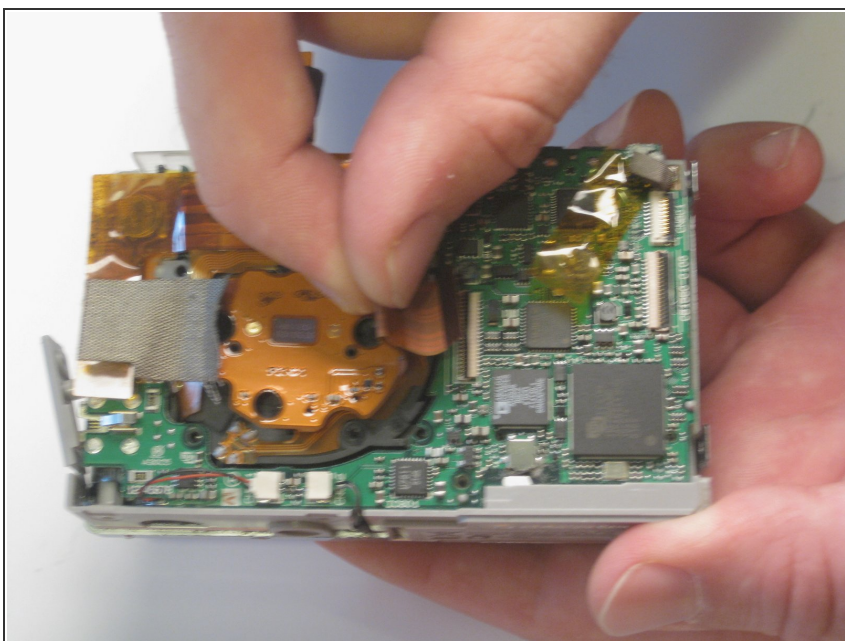
## Step 5 — Lens Filter Set



- Remove electrowind strip from front cover.

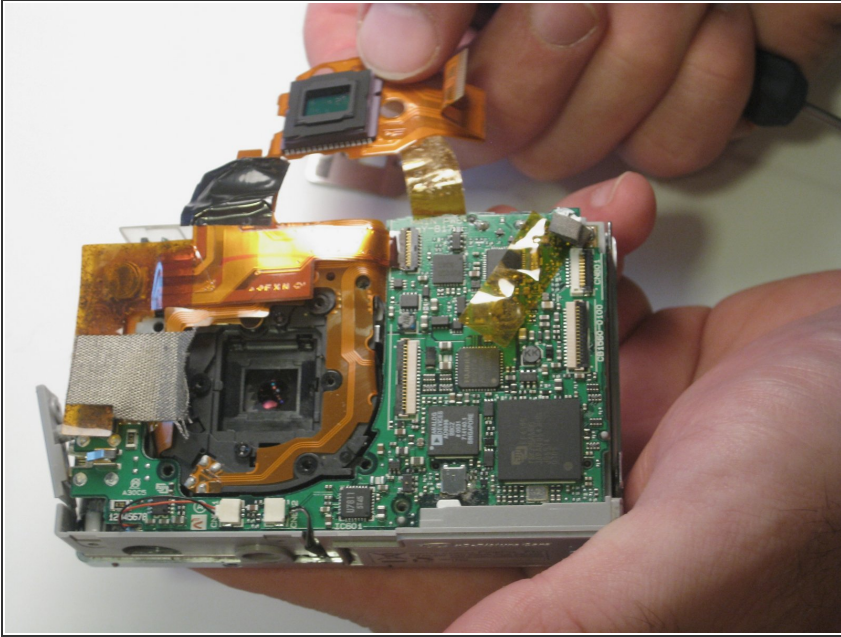
ⓘ The front cover does not have to be separated from the device for this step or the next ones.

## Step 6



- Remove lens data cable by gently pulling it out.

## Step 7



- Remove lens filter.
- ⓘ There are multiple square pieces, so be sure to remove them all.

To reassemble your device, follow these instructions in reverse order.