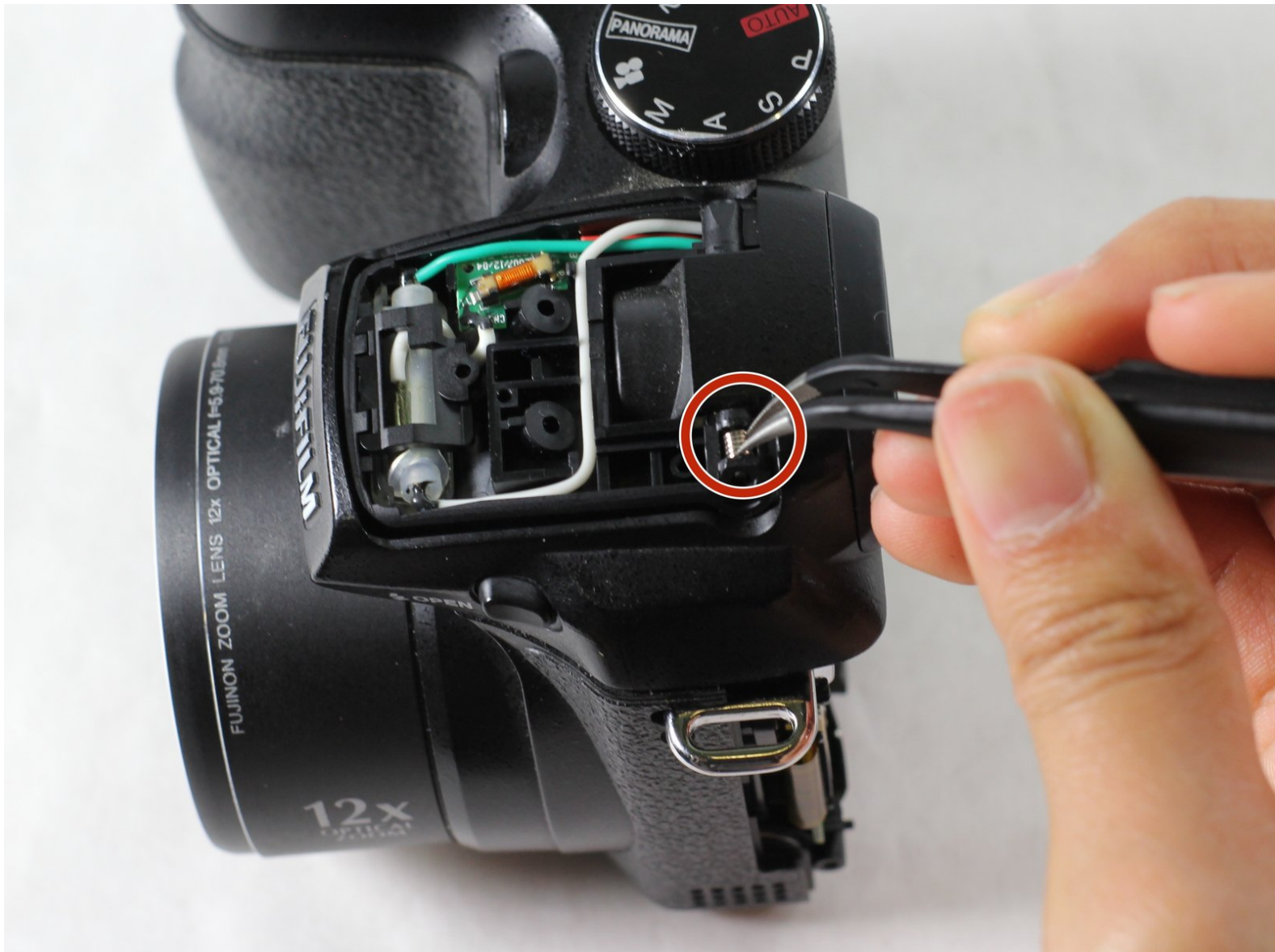




Fujifilm Finepix S1000fd Flash Pop Up Spring Replacement

An easy to follow repair guide for Fujifilm Finepix S1000fd's flash pop-up spring.

Written By: Lizzie Eller



INTRODUCTION

If your flash will no longer pop up and you have followed the troubleshooting steps you can try replacing the spring by following this guide. This can be a complicated process though, so make sure you have tried other options first.



TOOLS:

- [Tri-point Y0 Screwdriver](#) (1)
 - [Phillips #00 Screwdriver](#) (1)
-

Step 1 — Rear Cover Casing



- Use the Phillips PH00 screwdriver to remove all the 0.5mm screws on the side.

Step 2



- Use the Tri-point Y0 screwdriver to remove the two 0.5mm screws on the horizontal axis.
- Remove the other two 0.5mm screws on the bottom with the PH00 screwdriver.

Step 3



- Once you unscrew all of the screws, carefully remove the rear casing.
- ⚠ Be careful not to pull the rear casing, otherwise you will rip the ribbon cable.
- Detach the ribbon cable by lifting the tab on the connector.

Step 4 — Flash Pop Up Spring



- Open the flash by pushing the button or prying it up with the plastic opener tool

Step 5



- Use a PH00 screwdriver to remove the two 0.5 mm screws located on the top of the flash

Step 6



- Fold the flash pop up back down

Step 7



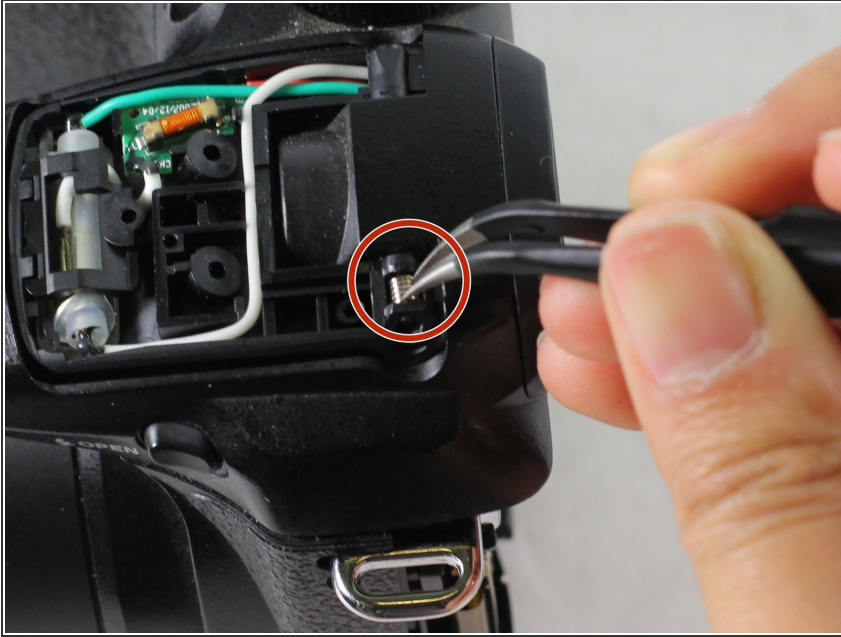
- Gently remove the plastic cover from the flash pop up.

Step 8



- Use a PH00 screwdriver to unscrew the 0.5m screw located at the center of the flash pop up

Step 9



- Locate the spring and grasp with the tweezers. Pinch and compress the spring to remove it from the camera housing. Slide the lever that was holding the spring out of the camera housing.
- Pinch and compress the spring to remove it from the camera housing
- Slide the lever that was holding the spring out of the camera housing

To reassemble your device, follow these instructions in reverse order.