



Fujifilm Finepix S1800 Back Cover Assembly Replacement

Back Case Cover replacement for the Fujifilm Finepix S1800.

Written By: Ryan Rockford



INTRODUCTION

Is your back case cover scratched on your Fujifilm Finepix S1800? It may be time to replace the cover. This guide will walk you through each step on replacing the back case cover.



TOOLS:

- [iFixit Opening Tools](#) (1)
- [JIS Driver Set](#) (1)



PARTS:

- [Fujifilm Finepix Parts](#) (1)

Step 1 — Back Cover Assembly



- Use a J000 screwdriver to unscrew all the four 4mm screws on the left-hand side of the camera.

Step 2



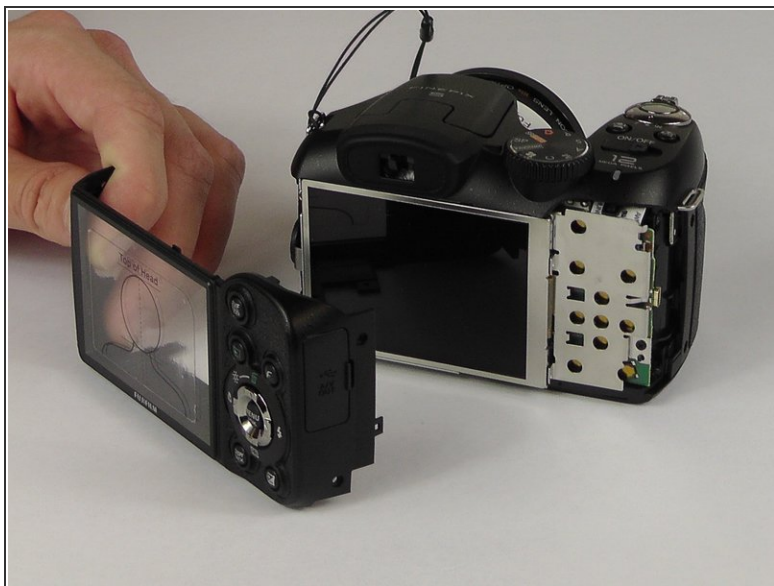
- Use a J000 screwdriver to unscrew the four 4mm screws on the right-hand side of the camera.

Step 3



- Use a J000 screwdriver to unscrew three 4mm screws on the bottom of the camera.

Step 4



- After all the 4 millimeter screws are taken out, take plastic opening tool and the cover will pop out.
- ⓘ You may have to work the back cover from different sides to get it to pop off.

To reassemble your device, follow these instructions in reverse order.