



Fujifilm Finepix S1800 Top Cover Replacement

This guide explains how to replace the top cover of the Fujifilm Finepix S1800 camera.

Written By: Ryan Rockford



INTRODUCTION

Is the flash not flipping up on your Fujifilm Finepix S1800 camera? It might be time to replace the top cover plate. This guide will show you how to replace the top cover.



TOOLS:

- [Phillips #000 Screwdriver](#) (1)



PARTS:

- [Fujifilm Finepix S1800 Top Cover Plate](#) (1)

Step 1 — Back Cover Assembly



- Use a J000 screwdriver to unscrew all the four 4mm screws on the left-hand side of the camera.

Step 2



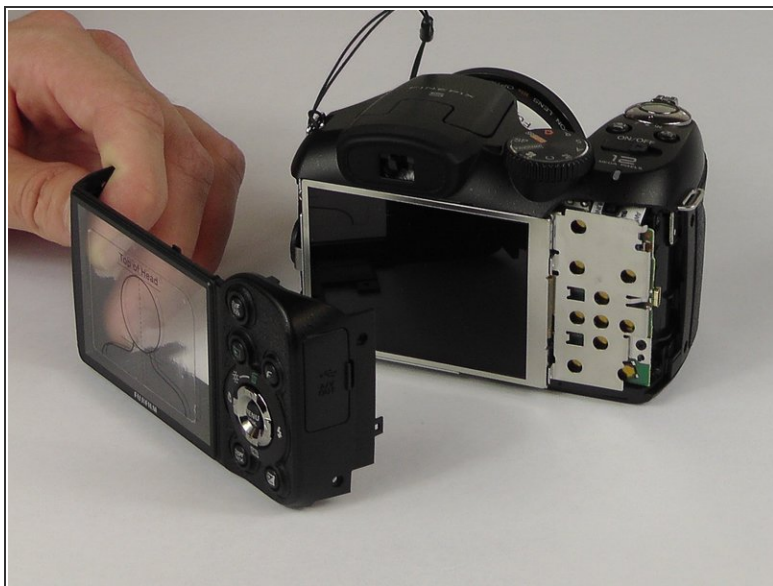
- Use a J000 screwdriver to unscrew the four 4mm screws on the right-hand side of the camera.

Step 3



- Use a J000 screwdriver to unscrew three 4mm screws on the bottom of the camera.

Step 4



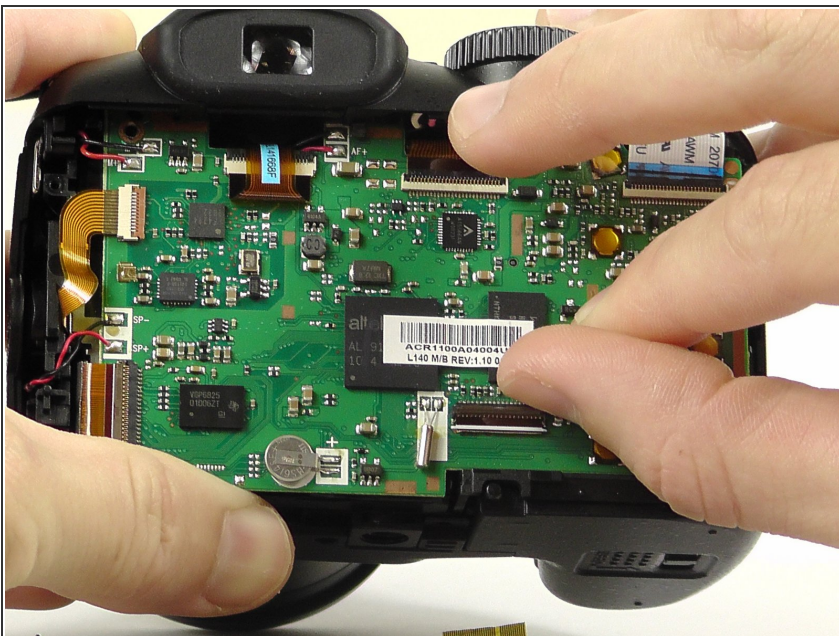
- After all the 4 millimeter screws are taken out, take plastic opening tool and the cover will pop out.
- ⓘ You may have to work the back cover from different sides to get it to pop off.

Step 5 — LCD Screen



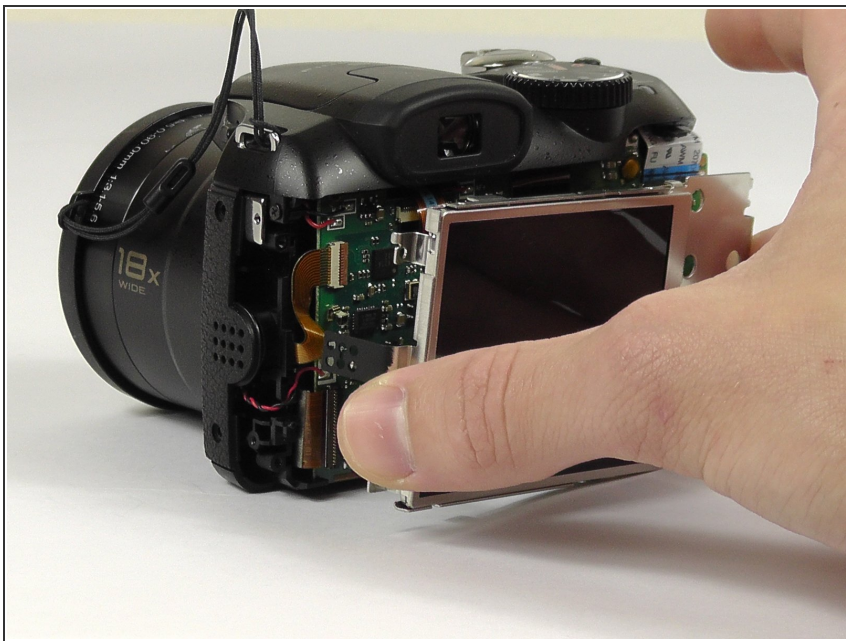
- Use a screwdriver to remove the three 2 mm screws from the back cover plate.
- Gently lift the back cover away from the device, but do not pull or yank free.
- ⚠ The LCD screen is still connected to the motherboard via a small ribbon cable.

Step 6



- Move the lever to disconnect the ribbon cable from the circuit board.
- ⚠ Avoid ripping the fragile micro ribbon cable.

Step 7



- Gently remove the LCD screen. Avoid touching it directly.

Step 8 — Top Cover



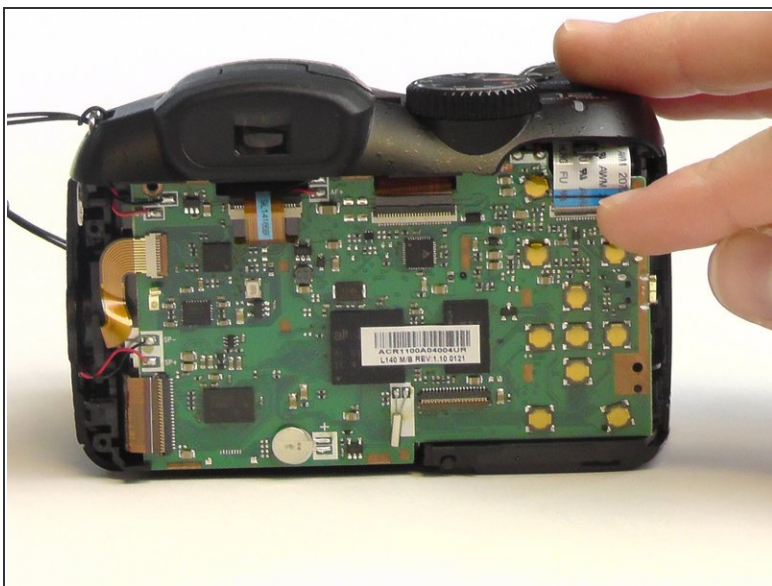
- Lift the flash.
- Using a J000 screwdriver, remove the two 4mm screws from the top of the camera.

Step 9



- Remove the 4mm screws from the left and right sides of the camera.

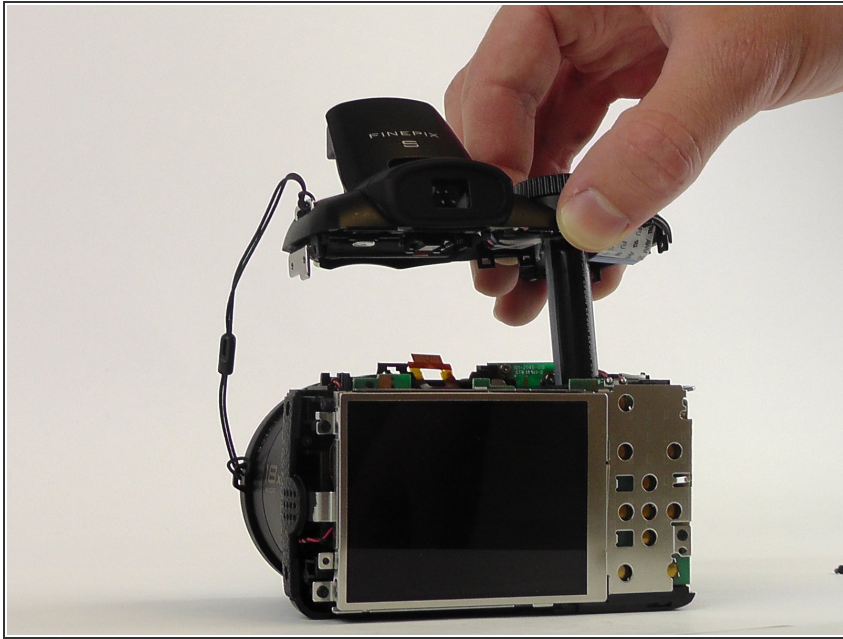
Step 10



- Switch the lever to disconnect the micro strip that connects the top plate.

⚠ Use caution to avoid ripping the micro strip.

Step 11



- Remove the top cover.

To reassemble your device, follow these instructions in reverse order.