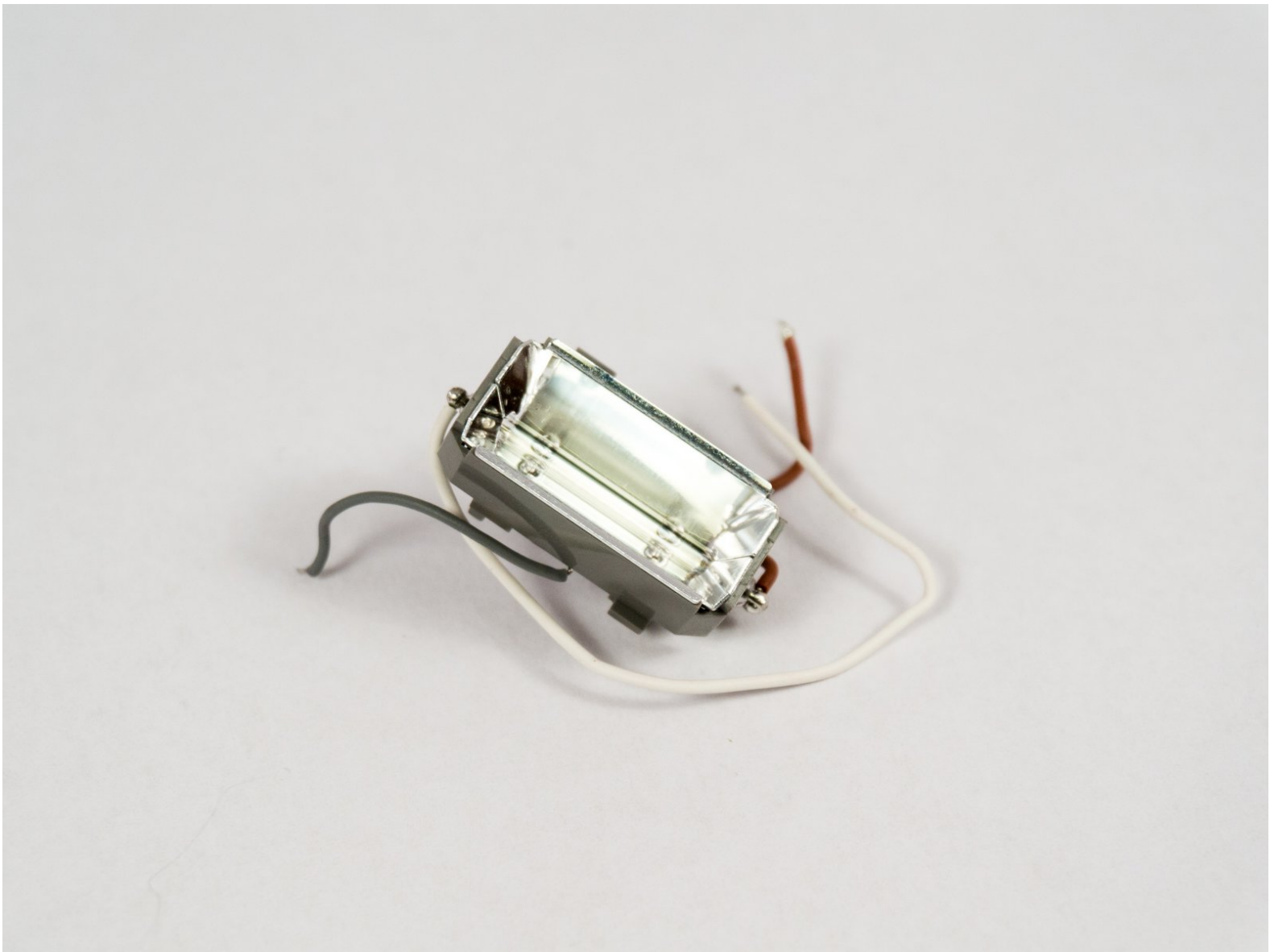




Fujifilm Instax Mini 8 Flash Unit Replacement

This guide helps you recognize the steps to replace your camera's flash unit to attain better-lit photos on an Instax Mini 8.

Written By: Boyang Wu



INTRODUCTION

The main purpose of this page is to assure the owner of a Fujifilm Instax Mini 8 is capable of disassembling the camera in order to remove and replace the flash unit, if there was to ever be any problems with the flash. Before attempting repairs, please take note of certain risks of receiving shock from the camera's flash capacitor. Also make sure to ground yourself before operating on the camera's motherboard or you might discharge static to crucial components.



TOOLS:

- [Phillips #00 Screwdriver](#) (1)
 - [iFixit Opening Tools](#) (1)
 - [Spudger](#) (1)
 - [Soldering Workstation](#) (1)
 - [Solder Vacuum](#) (1)
-

Step 1 — Flash Unit



- You start off with the camera.

Step 2



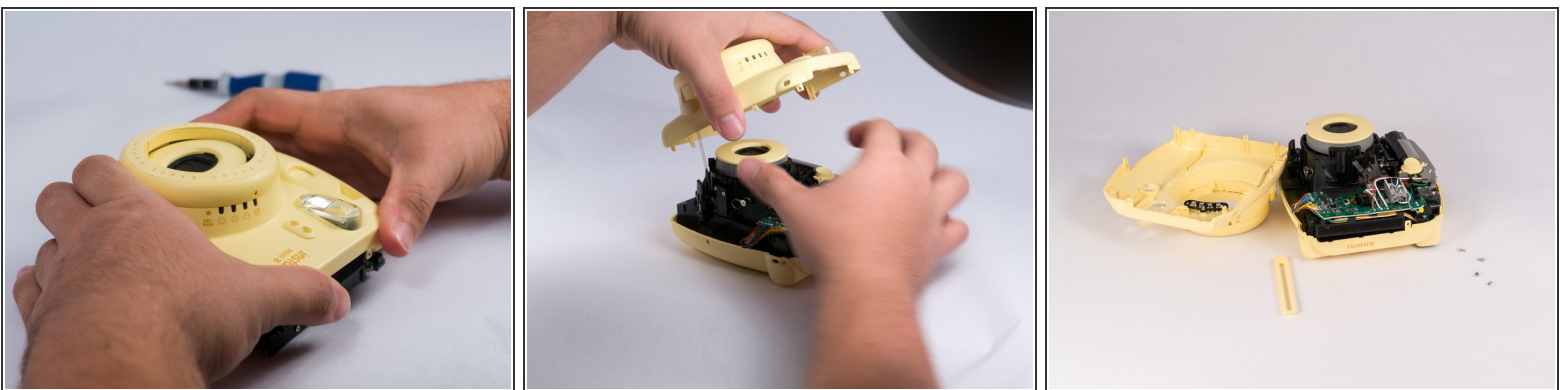
- Open up the back and remove the film cartridge.

Step 3



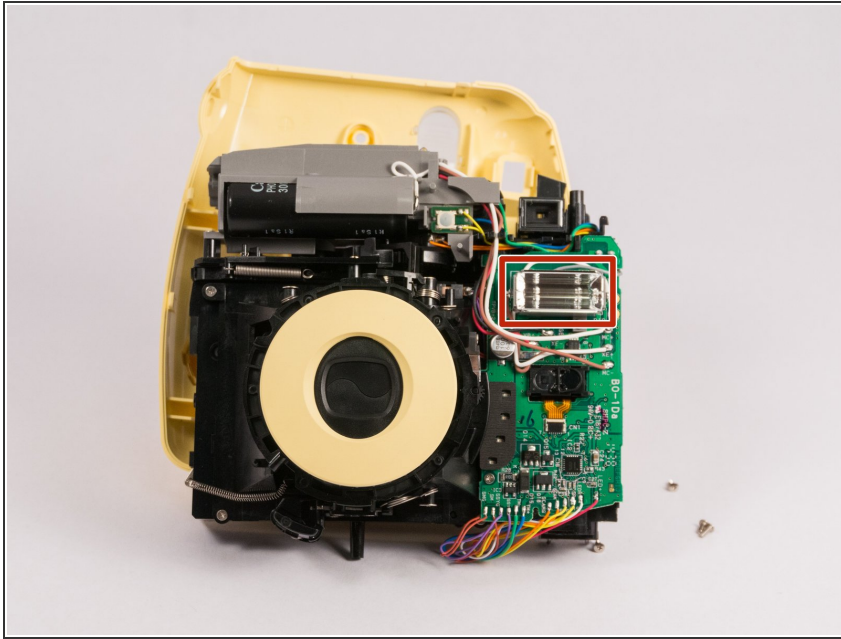
- Remove the two Phillips #00 screws from the bottom of the camera.
- Remove the two screws on the side of the camera.
- Additionally, there are two screws in the battery compartment which also need to be removed.


Step 4



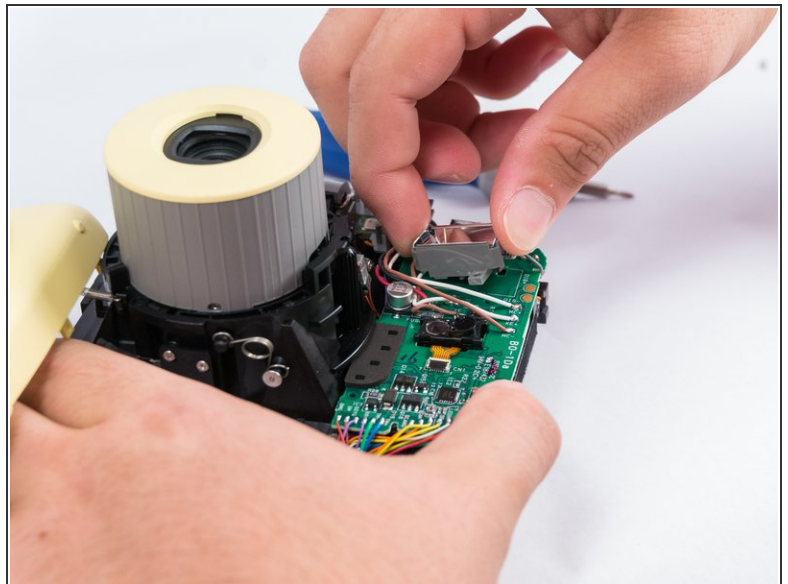
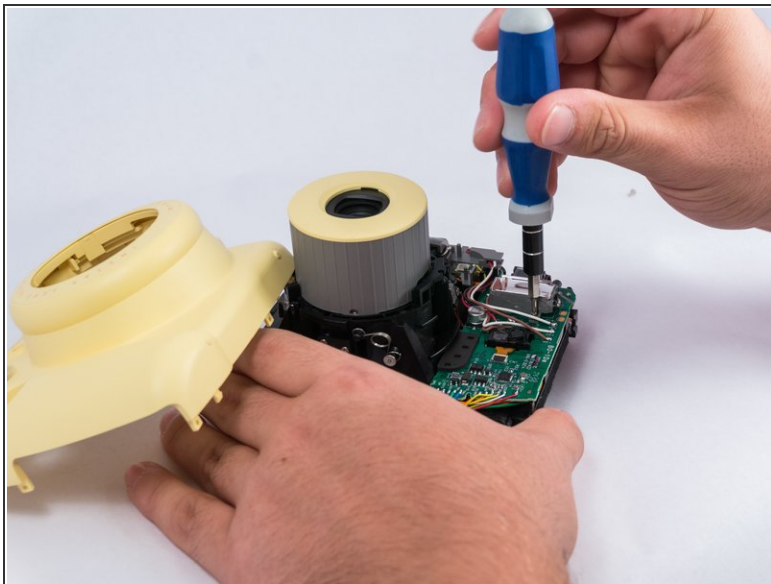
- Once all screws are removed, gently pry open the front casing with your hands or a prying tool.
- ⓘ There will be a spring that attaches the front casing and the main circuit board, so take care as to not break the spring.

Step 5



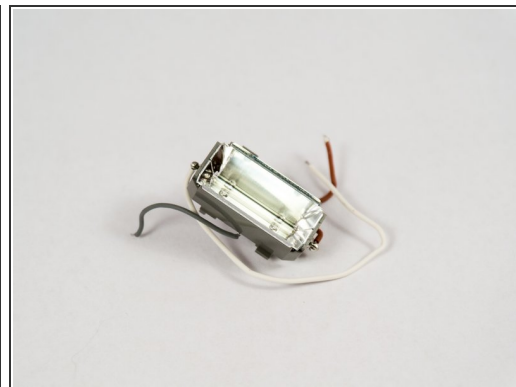
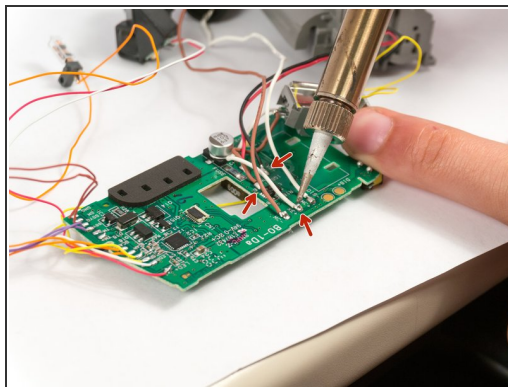
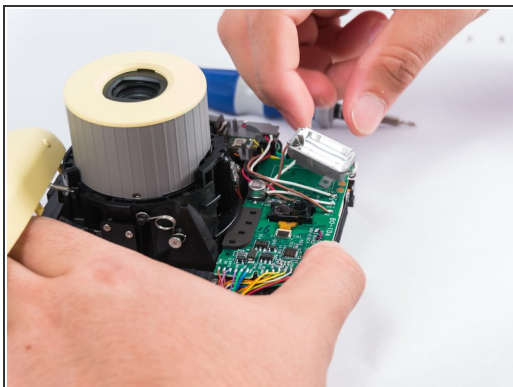
 You should now be able to see the flash unit. Take care to not touch the large black capacitor on the top. It will still have a charge and will hurt.

Step 6



- Unscrew the two screws attaching the flash to the main circuit board. The flash unit will detach away from the motherboard, now leaving just the connecting wires to remove next.

Step 7



- With a solder kit, heat the connecting solder points to open the connection, thus removing the connecting wires. There are many ways to do this, depending on the available tools on hand.

To reassemble your device, follow these instructions in reverse order.