



# Fujifilm Instax Mini 8 Lens Unit Replacement

Replacing the Mini 8's lens unit can help you reattain optimal lens clarity and reliability to get better photos.

Written By: Boyang Wu



## INTRODUCTION

Before attempting repairs, please take note of certain risks of receiving shock from the camera's flash capacitor. Also make sure to ground yourself before operating on or near the camera's motherboard or you might discharge static to crucial components.



### TOOLS:

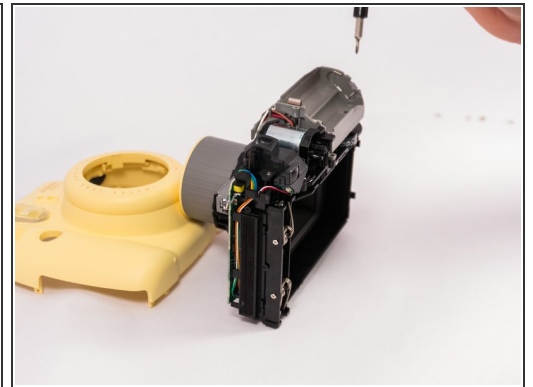
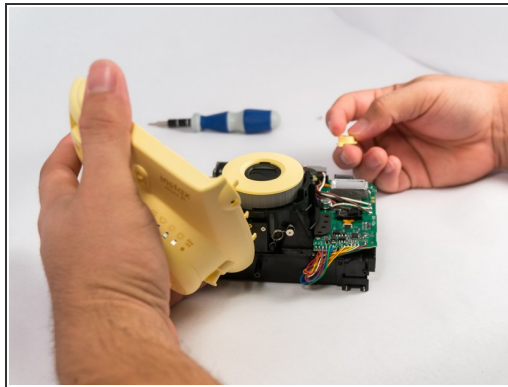
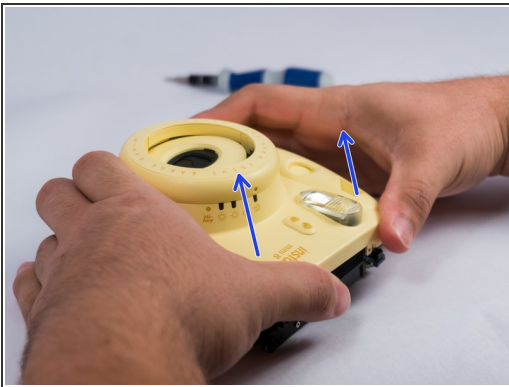
- [Phillips #00 Screwdriver](#) (1)
  - [Spudger](#) (1)
-

## Step 1 — Lens Unit



- First, push in the lens and remove the two AA batteries.

## Step 2



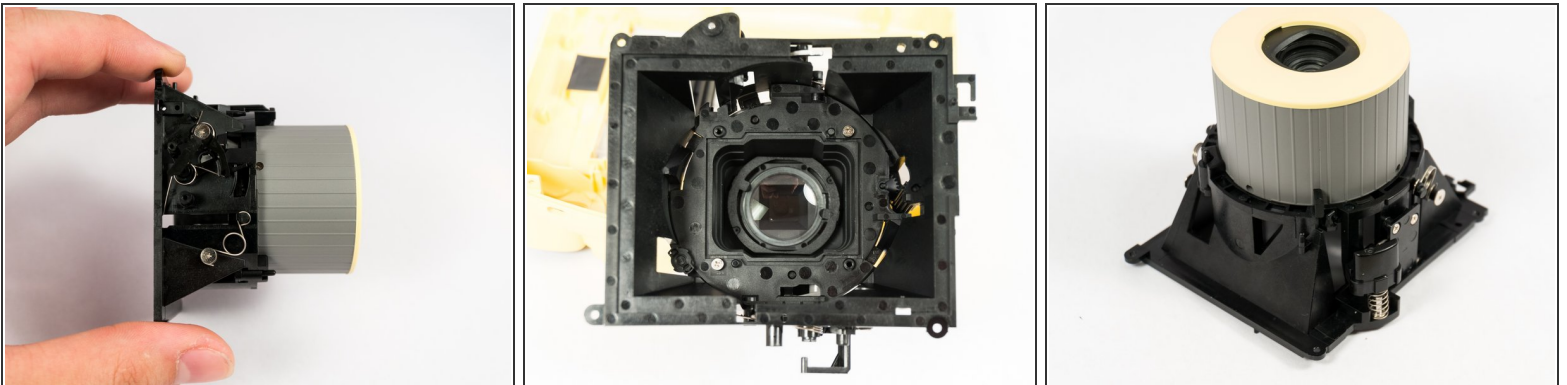
- Remove screws from bottom of camera with a small #00 Phillips Screwdriver. Then remove screws around the camera.
- Once all screws are removed, gently pry open the front casing carefully. Do note that there will be a spring that attaches the front casing and the main circuit board, so refrain from allowing excess tension on the spring.

### Step 3



- Locate the four screws on the lens unit by the corners and remove them to loosen the lens casing from the main frame. Make sure to keep hold of the unit screws to use for the next step.

### Step 4



- Remove the lens unit from the main camera frame.
- Obtain the replacement part to perform the replacement operation.

To reassemble your device, follow these instructions in reverse order.