



Fujifilm X-M1 Back Case Replacement

This guide will help you replace the back case of the Fujifilm X-M1.

Written By: Kelsea Weber



INTRODUCTION

Use this guide to replace a damaged back case, or open the case to access other components of your camera.

We highly suggest you use a [magnetic project mat](#) or an [organization tray](#). This camera has **many** different types of screws and keeping them organized is key to proper reassembly.




TOOLS:

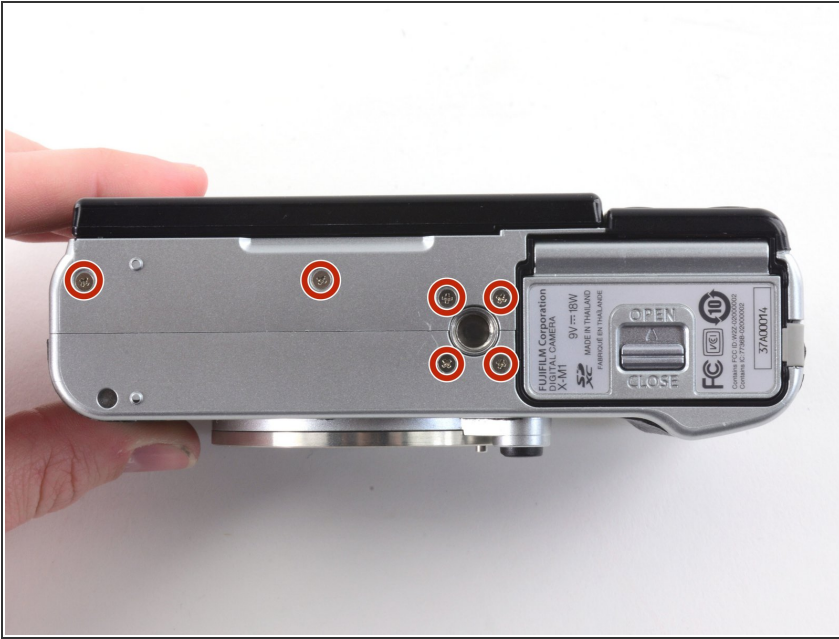
- [Phillips #00 Screwdriver](#) (1)
 - [Tweezers](#) (1)
 - [Magnetic Project Mat](#) (1)
 - [Spudger](#) (1)
-

Step 1 — Battery



- Turn the camera upside down to locate the battery compartment.
 - Slide the button up to open the compartment.
 - Slide the orange button up to release the battery.
-  The battery is not shown in these photos.

Step 2 — Back Case



- Remove the six 2.5 mm Phillips screws from the bottom of the camera.

Step 3



- Use tweezers or a finger nail to peel back the rubber cover on the left handgrip.
- Remove the 3.4 mm Phillips screw.
- Remove the 3.7 mm screw.

Step 4



- Use tweezers or a fingernail to peel back the rubber cover on the right handgrip.
- Remove the 3.2 mm Phillips screw.
- Remove the 3.8 mm Phillips screw.
- Remove the 2.8 mm Phillips screw.

Step 5



- Use tweezers to slide the metal shield straight out of the external flash mount.

Step 6



- Remove the four 4.6 mm Phillips screws from the external flash mount.
- Use tweezers or two fingers to remove the mount clip.

Step 7



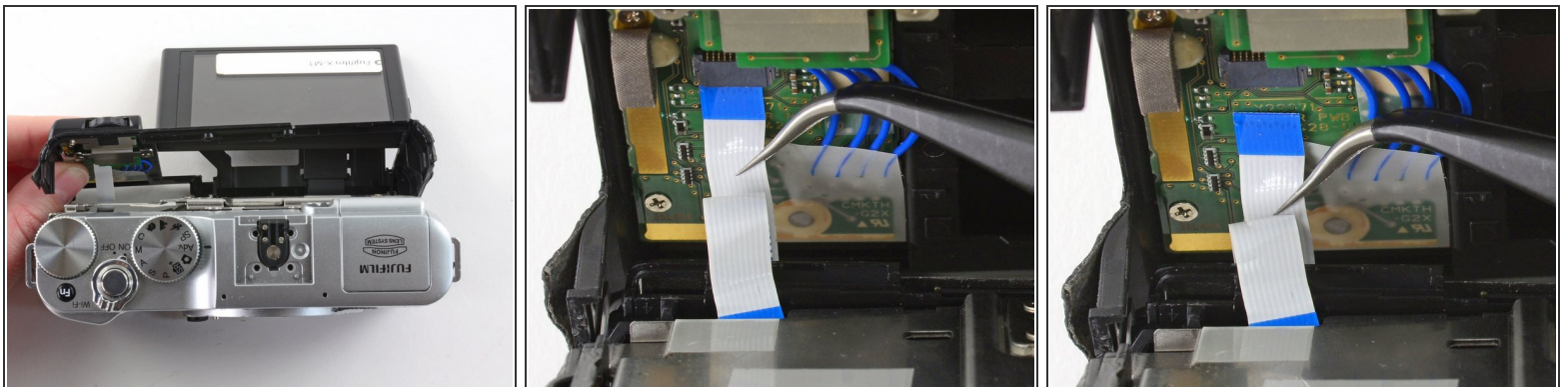
- Extend the LCD.
- Remove the two black 4.3 mm Phillips screws from the back case.

Step 8



- Use two fingers to peel back and remove the black plastic cover from behind the LCD.

Step 9



- Slowly pull the back frame away from the camera.
- ⚠ Do not attempt to remove the frame, as it is attached to the camera by a ribbon cable.
- Use tweezers to pull the white and blue ribbon cable out of the connector.

Step 10



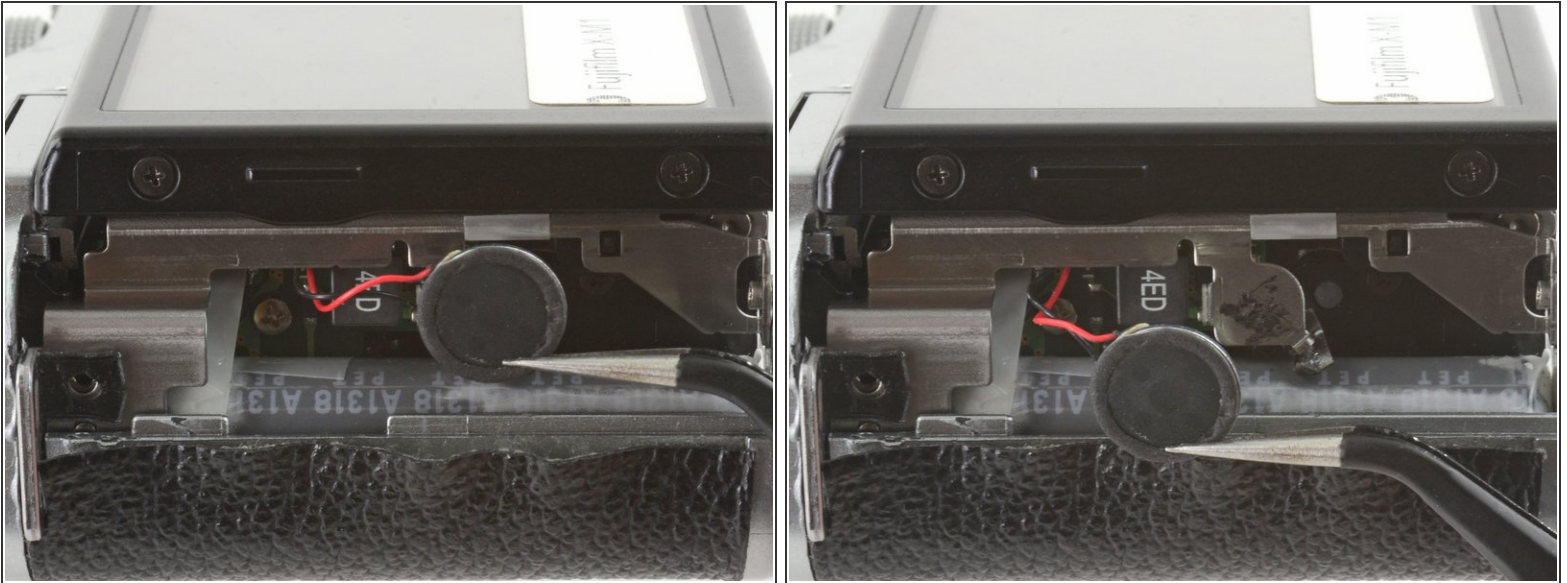
- Slide the frame around the LCD to remove it from the camera.

Step 11



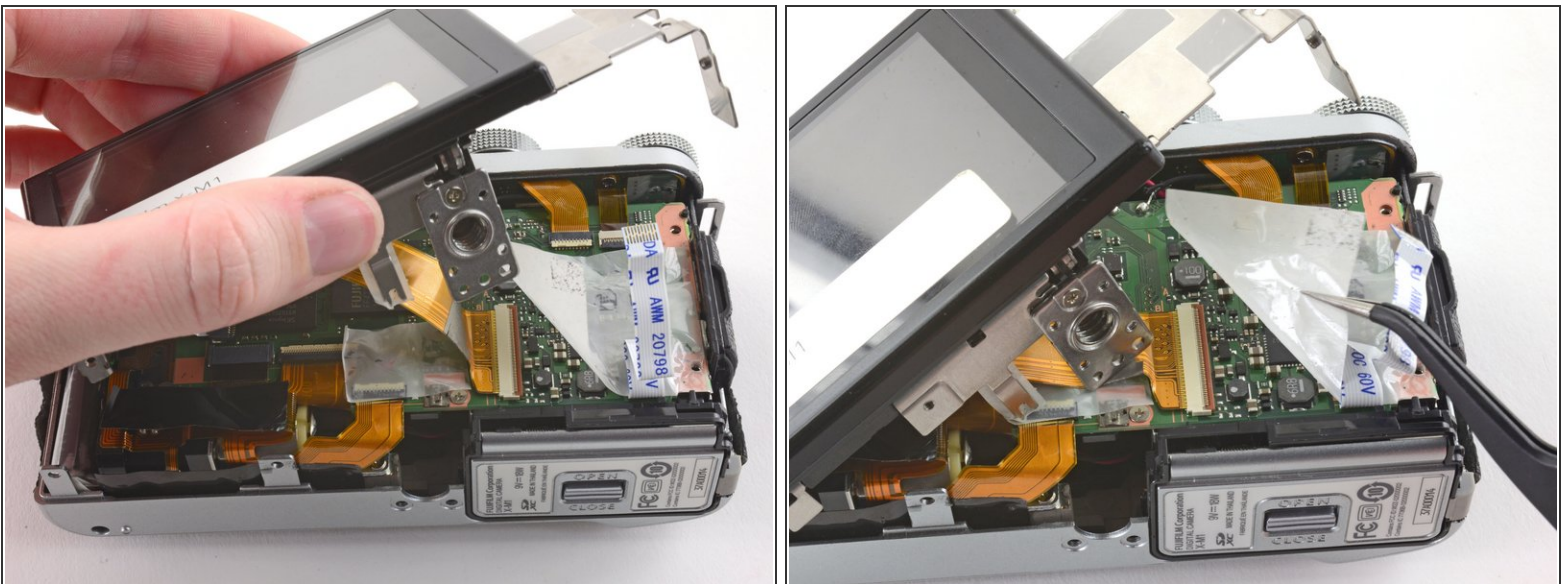
- Remove the two 2.6 mm Phillips screws from the right side of the metal frame.

Step 12



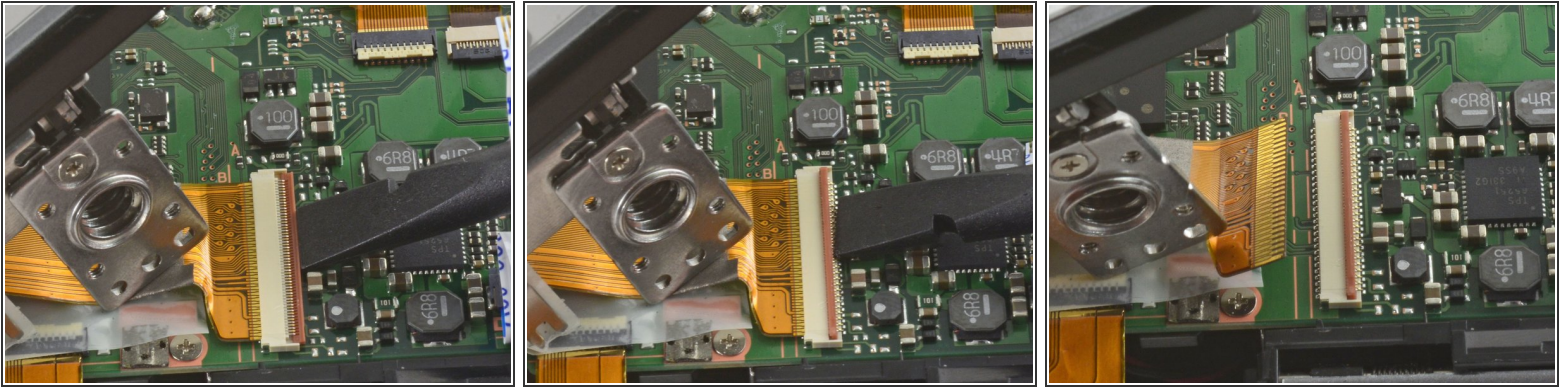
- Use tweezers to unhook the speaker near the left handgrip.

Step 13



- Slowly lift the metal frame away from the motherboard.
- ⚠ Do not attempt to remove the frame, as it is attached to the motherboard by a large ribbon cable.
- Use tweezers to remove the plastic covering the motherboard.

Step 14



- To remove the ribbon cable, flip back the orange lock on the large ZIF connector with the flat end of a spudger.
- ⓘ If the ribbon cable does not pop out on its own, use tweezers to pull it out of the connector.
- Remove the back case.

To reassemble your device, follow these instructions in reverse order.