



# Fujifilm X100T Port Cover Door Repair

The Fuji X100t port flap weakens over time from extended use and fails to stay closed. This is how to bring the port flap back to its original springy state

Written By: Anthony Kouttron



---

## INTRODUCTION

The Fuji X100t port flap weakens over time from extended use and fails to stay closed. This is how to bring the port flap back to its original springy state

---



### TOOLS:

- [JIS Driver Set](#) (1)
  - [pick](#) (1)
  - [Small pliers](#) (1)
-

## Step 1 — Fujifilm X100T Port Cover Door Repair



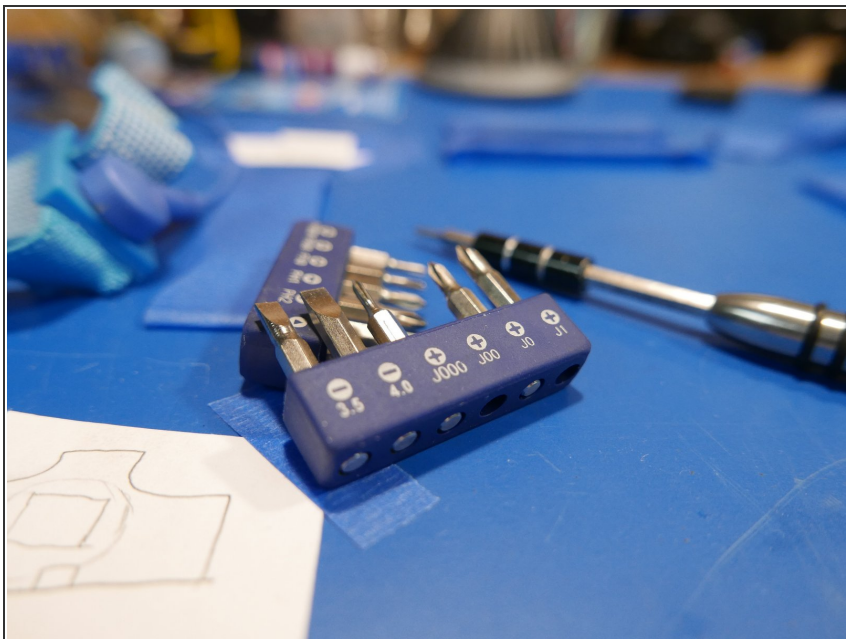
- To fix the port flap spring-back action, you will need to remove the flap and hinge from the port cover assembly.
- To remove the port flap and hinge, you first need to remove the bottom plate from the camera
- The following procedure will show you how to remove the flap and bottom plate.

## Step 2



- First line of business: Remove power from the camera. Remove the battery from the X100t.

### Step 3



- It's important to recognize that this is a camera produced by a Japanese camera manufacturer. The Japanese camera industry loves using [JIS](#) (Japanese Industrial Standard) screws.
- Don't be tempted by your Phillips screw driver collection. Although PH#00 will interchange with JIS#00, it is not a perfect fit. Using Phillips will cause more wear on the head of the JIS screws and cause the screws to prematurely strip.
- Have both JIS#00 and JIS#000 screw drivers available for this teardown. Luckily, both bits are included in the [ifixit 64bit kit](#).



## Step 4



- Unscrew the six 4.0 mm JIS#00 screws on the bottom of the camera. You should now be able to remove the bottom plate from the camera.

## Step 5



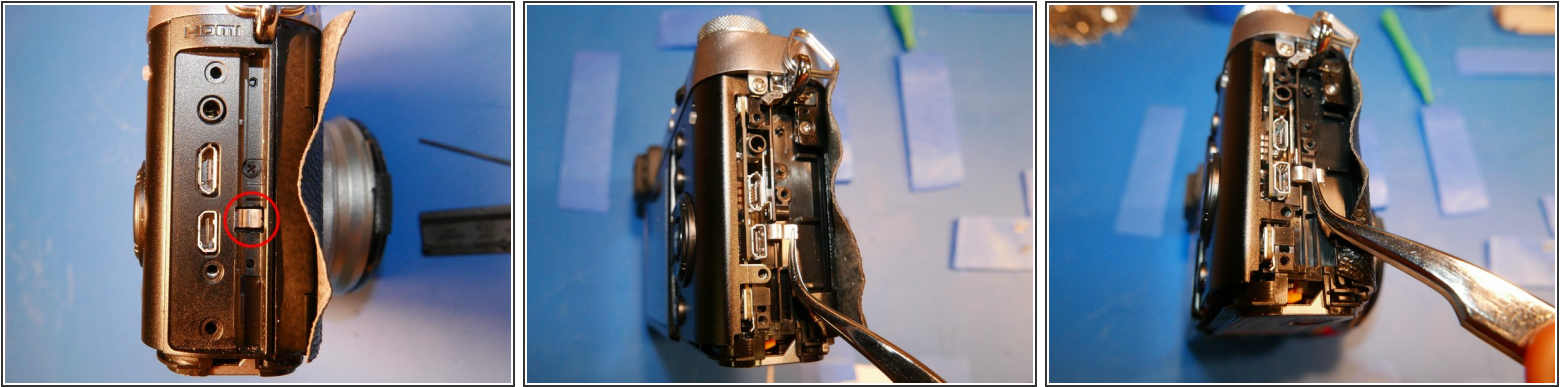
- Get your picks ready!
- To get any deeper into this camera, the right-hand port cover assembly must be removed first. Once this is removed, you will have access to the screws that secure the other components.
- There's a tiny hole toward the bottom right of the battery compartment. Using the pick tool, press into that hole.
- A plastic rod will release. That plastic rod is the axis the hinge rotates about.

## Step 6



- Fuji! What did we tell you about hiding screws behind closed doors! That's pretty under the table Fuji. Don't do it again. Promise?
- The devil's in the details with this camera. Slide the port cover off the hinge rod.
- Using a pair of pliers, pull the rod out of the top plate of the camera. Now you'll have access to the port flap spring.

## Step 7



- With the port flap removed you can put your screwdriver away. Focus on that metal clip looking piece
- This metal clip is what provides the spring action to the port flap door. Overtime, it recedes further into the camera body, reducing the spring tension on the port flap door.
- To put more spring action into that door, simply pry a bit up on that metal clip. Pry up, in the direction orthogonal to the camera, [out-of-the-page](#).
- Pull up lightly. Don't go crazy and pull too hard, as that metal clip can break from being overstressed. Be generous and take your time.
- You do not need to remove the entire port flap assembly, like in the last 2 photos of this step. It is unnecessary.

To reassemble your device, follow these instructions in reverse order.