



Fujifilm X30 Lens Replacement

To replace your camera's broken lens, follow the steps in this guide.

Written By: Haley Moss



INTRODUCTION

This guide shows how to replace a Fujifilm X30 lens that may be cracked or damaged.



TOOLS:

- [Phillips #000 Screwdriver](#) (1)
 - [Spudger](#) (1)
-

Step 1 — Battery



- Turn the camera upside down.
- Place your thumb on the switch, and slide it towards the center of the camera.
- ⓘ The compartment will pop open.

Step 2



- Once you have the battery compartment open, slide the orange tab away from the battery until it ejects.

Step 3



- Pull the battery out.

Step 4 — Lens



- Begin by removing the outside screws using a Phillips #000 Screwdriver:
 - Remove the three 3.6 mm silver screws located on the bottom of the camera.
 - Remove all four of the 4.7 mm screws from the sides of the camera.

Step 5



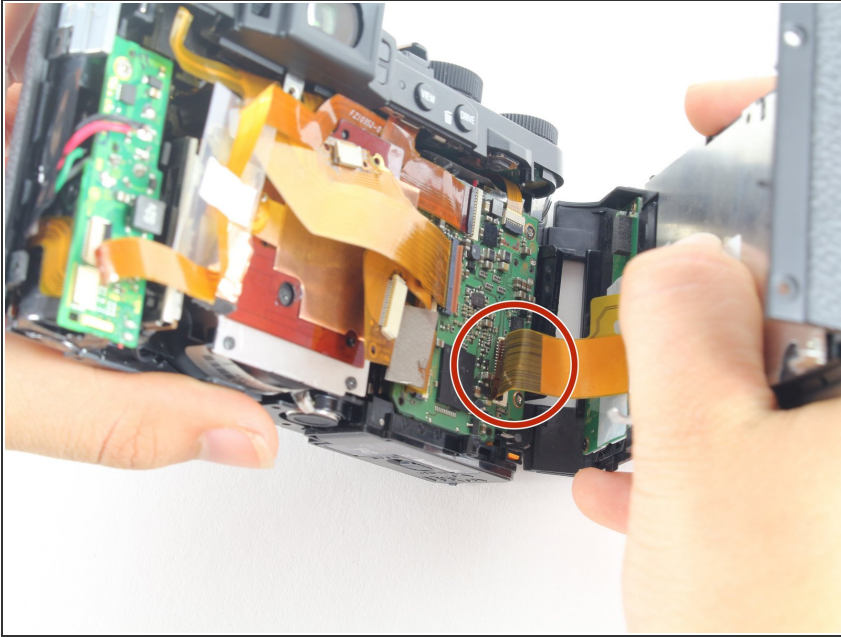
- Remove all screws listed below using a Phillips #000 Screwdriver:
 - Lift up the screen and remove the two 4.5 mm screws located in the bottom corners.
 - Remove the 4.0 mm screw that is located behind the screen and directly under the eye piece.

Step 6



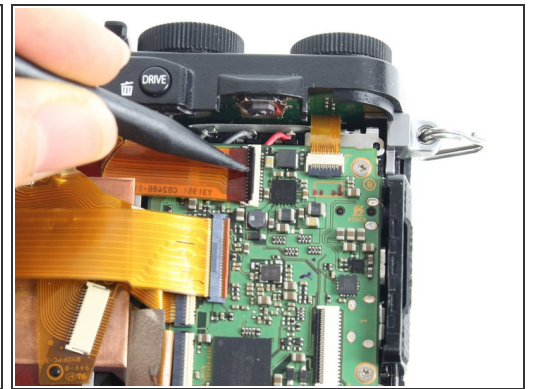
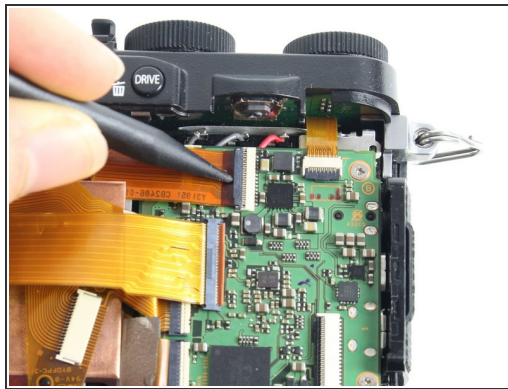
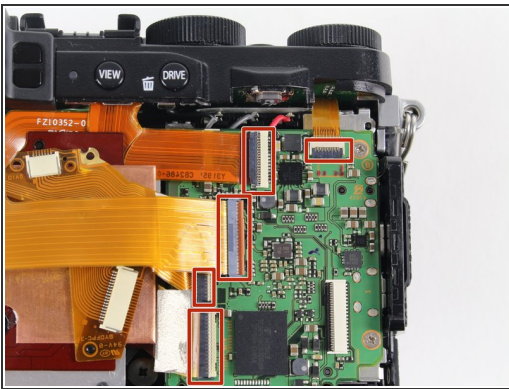
- Carefully remove the bottom piece of the camera.

Step 7



- ⚠ Do not pull hard when removing the backing because it could rip the orange strip attached to the motherboard.
- Gently pull off the back of the camera from the left side so that it is partially open.
- Use a spudger to lift up the tab holding the orange strip and slide the strip out to disconnect it
- ⓘ Refer to the next step to see pictures of how to properly use the spudger when removing a strip.

Step 8



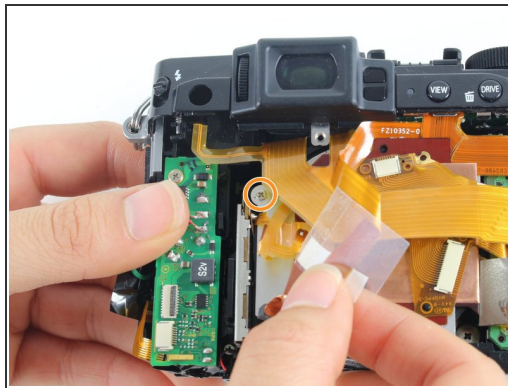
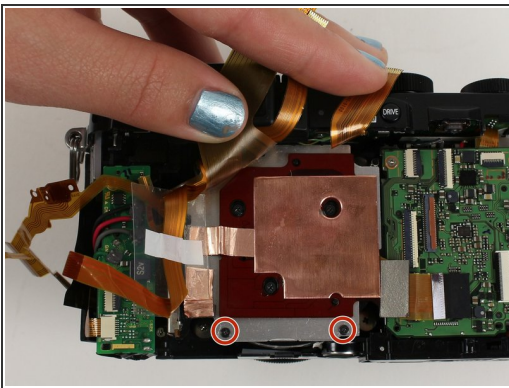
- For all five indicated orange strips:
 - Use a spudger to lift up the tab holding the orange strip and slide the strip out to disconnect it.

Step 9



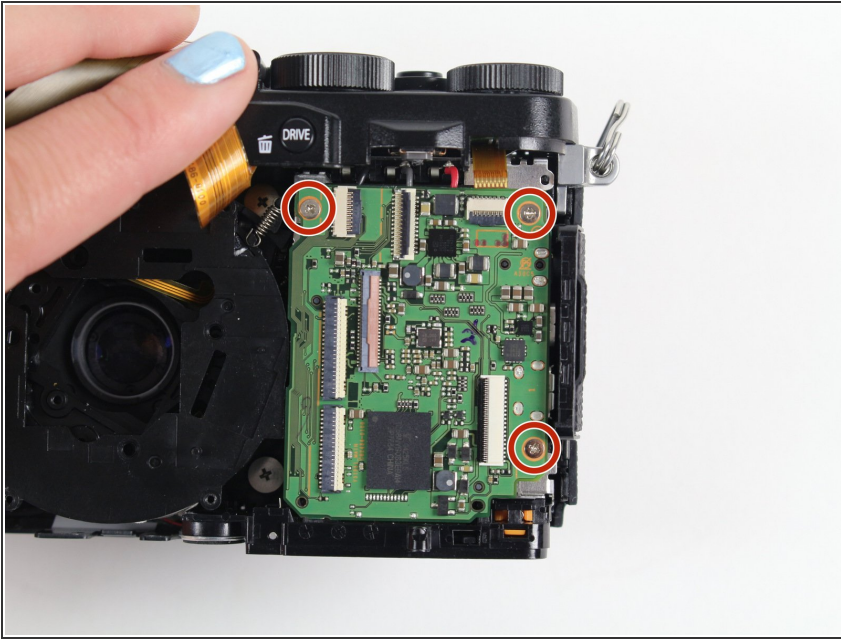
- For the final orange strip located behind the top strip:
 - Use a spudger to lift up the tab holding the orange strip and slide the strip out to disconnect it.

Step 10



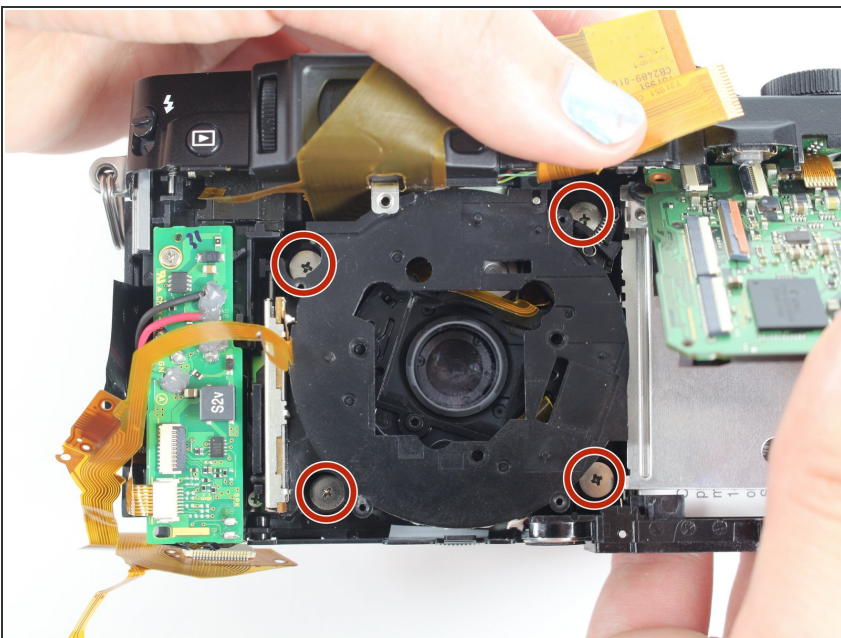
- Remove all screws listed below using a Phillips #000 Screwdriver:
 - Remove the two 3.4 mm screws at the bottom of the silver plate.
 - Peel back the clear strip to reveal a 2.8 mm screw on the left of the silver plate and remove it.
- Peel back the copper plate.

Step 11



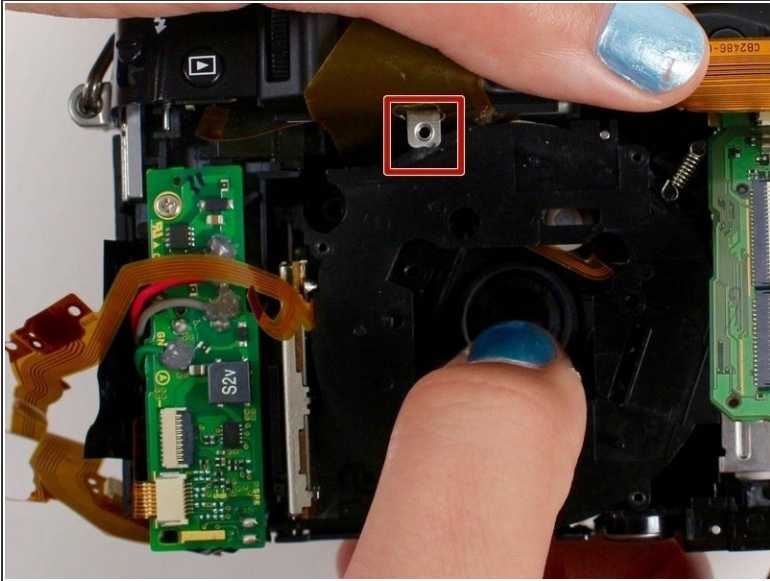
- Remove the three 2.6 mm screws located in the top two corners and the bottom right corner of the motherboard using a Phillips #000 Screwdriver.
- Lift the motherboard so it is out of your way to remove the lens.
- ❗ You do not need to desolder the motherboard to reach the lens.

Step 12



- Remove the four 4.4 mm silver screws at the corners of the lens using a Phillips #000 Screwdriver.

Step 13



- Pull the lens down so it can clear the silver tab.
- Then push the lens with your index fingers from the front of the camera until it is removed.

To reassemble your device, follow these instructions in reverse order.