



Fujitsu LIFEBOOK P7010D Monitor Replacement

How to install the Fujitsu LIFEBOOK P7010D monitor

Written By: Nicholas Ross





TOOLS:

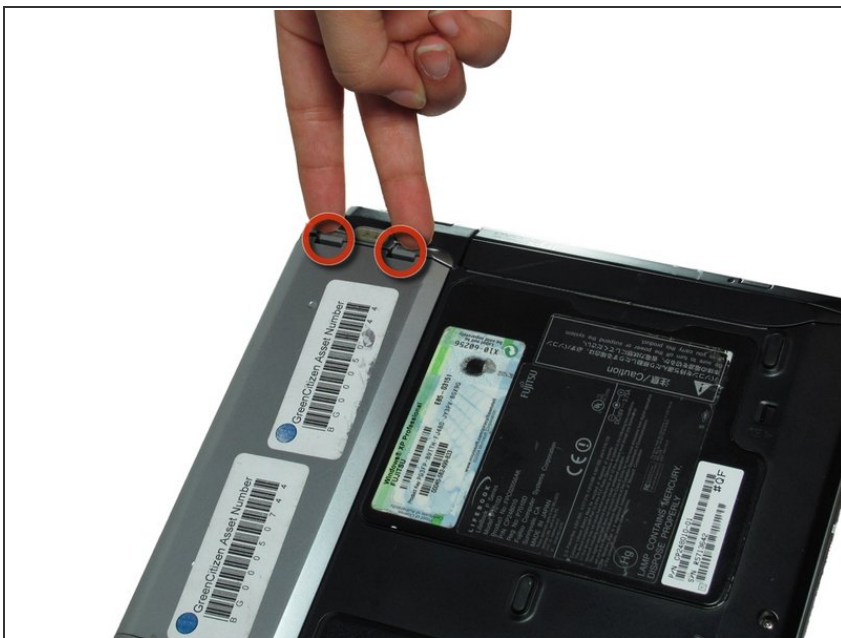
- [Anti-Static Wrist Strap](#) (1)
- [Phillips #0 Screwdriver](#) (1)
- [iFixit Opening Tools](#) (1)

Step 1 — Battery



- Place the laptop upside down on a table.

Step 2



- Locate the battery (the grey block). Find the two tabs on one end of the battery near the side of the laptop.
- Using your fingers, press both tabs down at once until they are fully depressed.

Step 3



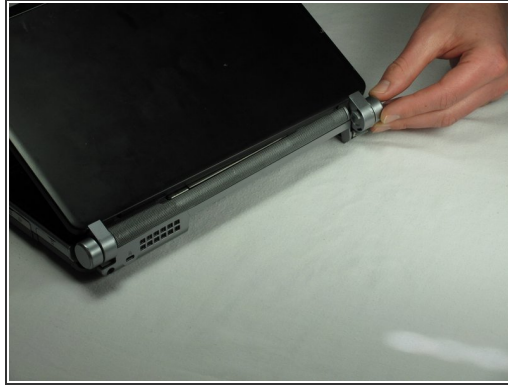
- While holding the tabs down, slowly pivot the battery up.
- The battery is now free and safe to pull out.


Step 4 — Keyboard



- Unscrew three 2.4mm and one 5.7mm screws using a Phillips # 0.
- Unscrew three 1.9mm screws in the battery compartment still using a Phillips # 0

Step 5



 Mind the wire connections on the bottom right side of the monitor. They are still connected between the monitor and computer.

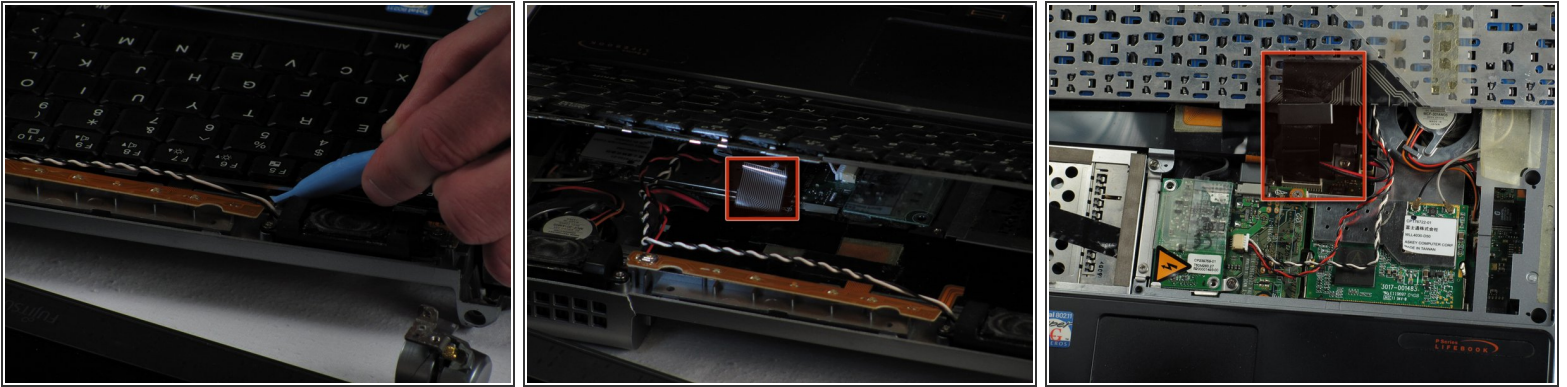
- Raise the monitor as you normally would until it pops out by itself. Rotate the left side up and to the right to unhook hinges that may catch on the computer.
- Lay the monitor flat next to the computer.

Step 6



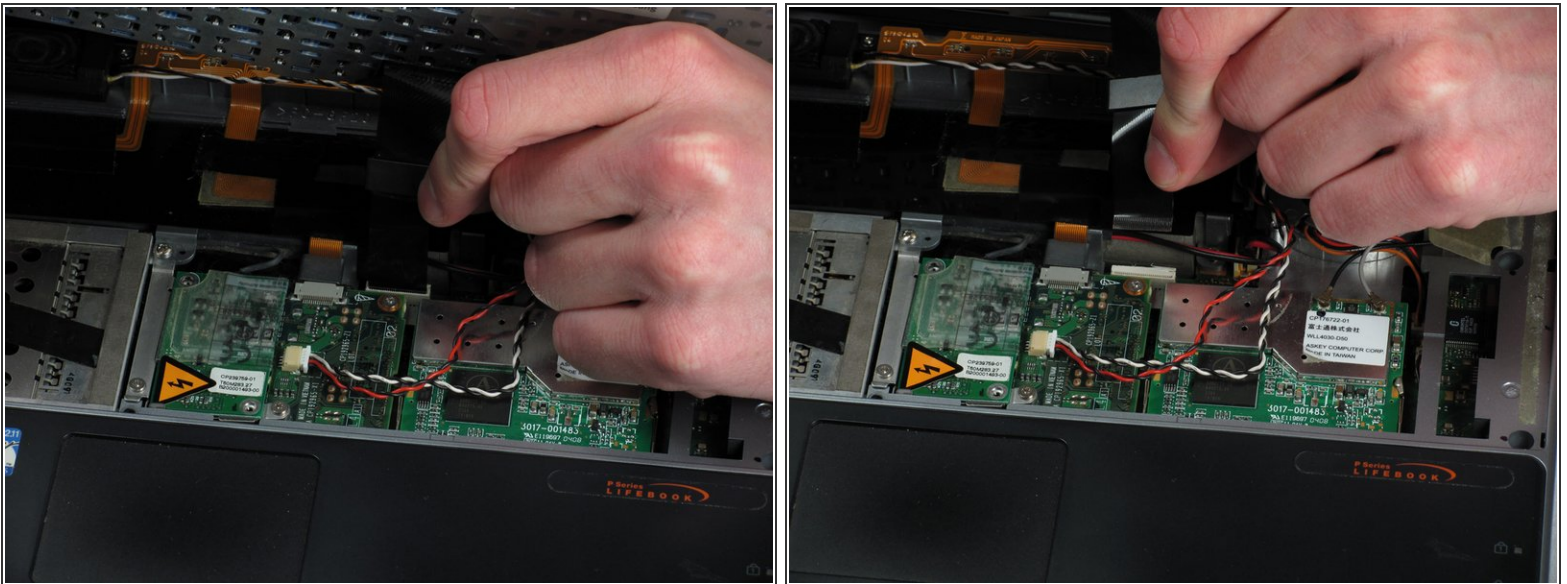
- Using a smaller spudger (like a PX3688), pivot the sound case out above the "F2" and "Insert" buttons.
- Lift the case out and set it aside.
- ⓘ For the proceeding steps, put on your anti-static wrist strap and attach the metal clip to something metal and grounded in order to protect the delicate circuitry inside the computer.

Step 7



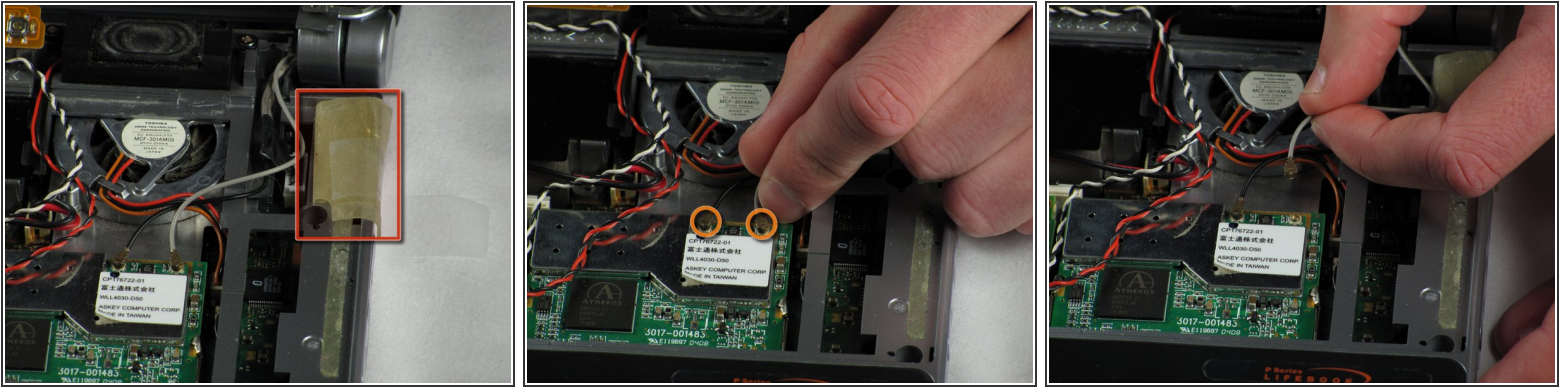
- Using the same spudger, pry the top of the keyboard up above the "F2" key.
 - Turn the computer so that the bottom is facing you.
- ⚠ The keyboard is connected to a black plastic strip, slowly pull the keyboard and place it to the side.

Step 8



- ⚠ Disconnect the keyboard by gently pulling on the hard plastic square straight up from the white connector.

Step 9 — Monitor



- Peel the white tape from the wires connected to the monitor, but do not completely remove it.
- Unplug the white and black wires with your fingers.

Step 10



- Unplug the white chip connected to the thicker wire with two smaller spudgers (like a PX3688) by wiggling it back and forth until it pops out.

To reassemble your device, follow these instructions in reverse order.