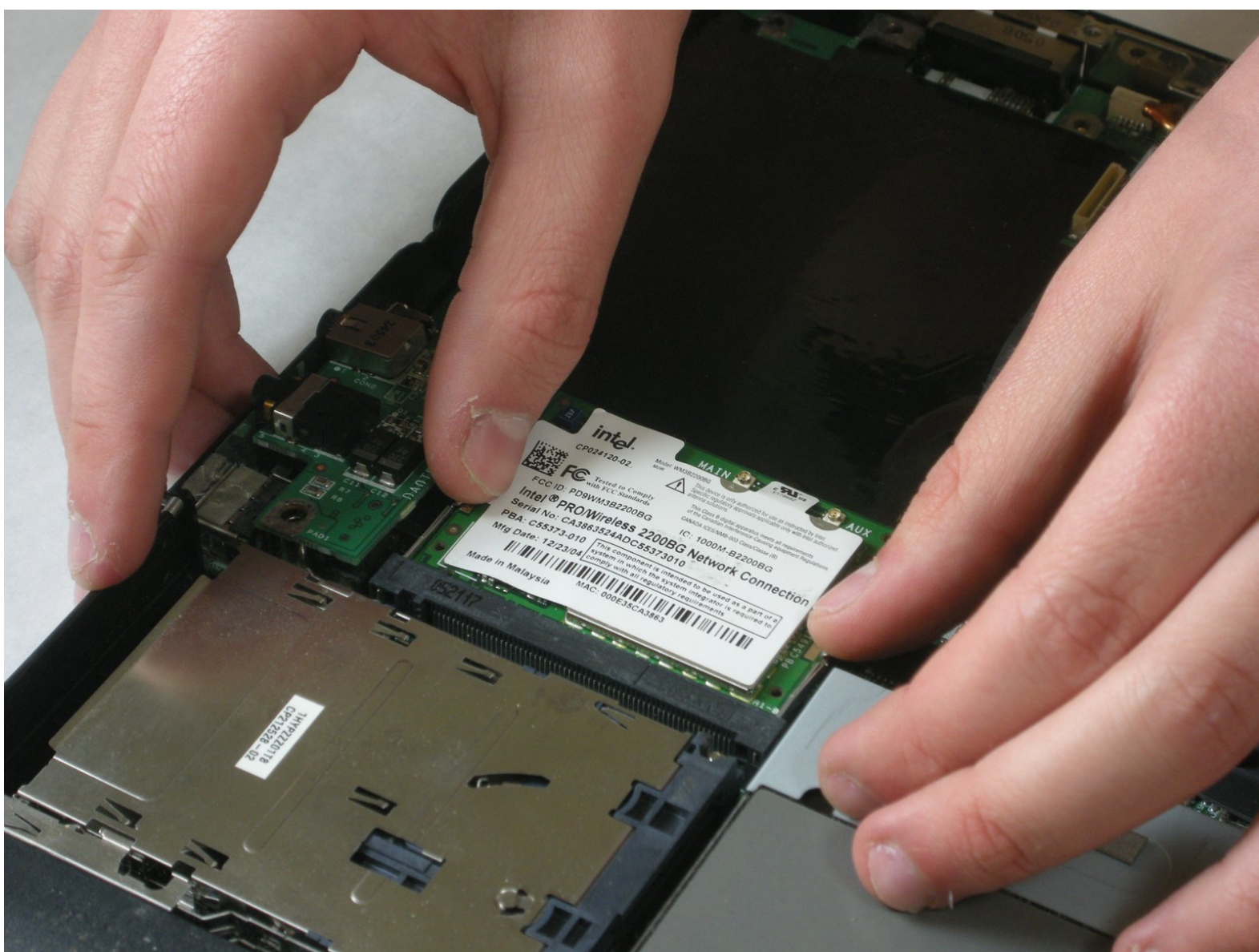




# Fujitsu LifeBook N3510 Wireless Module Replacement

Written By: Neil Daniels







## TOOLS:

- [Magnetic Project Mat](#) (1)
  - [Phillips #0 Screwdriver](#) (1)
  - [Spudger](#) (1)
  - [Phillips #00 Screwdriver](#) (1)
-



## Step 1 — Battery



- Locate the two clips on the bottom of the computer that support the battery.

## Step 2



- Using your fingers, push the clips inward and then upward.
- Lift the battery out of the computer.



## Step 3 — Hinge Cover



- Use a spudger to lift the back of the hinge cover on the left and right sides of the computer.

## Step 4



- Lay the computer flat on a stable surface with the monitor pointing away from you.




## Step 5



- Use a spudger to partially lift the hinge cover.

## Step 6



 The hinge cover has a ribbon cable that is attached to the motherboard. To prevent damage, lift the hinge cover slowly.

- Lift the hinge cover enough to expose the ribbon cable.

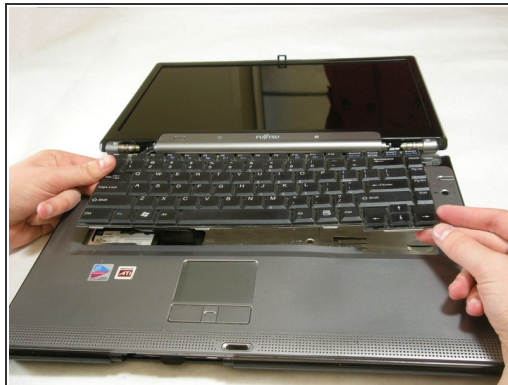
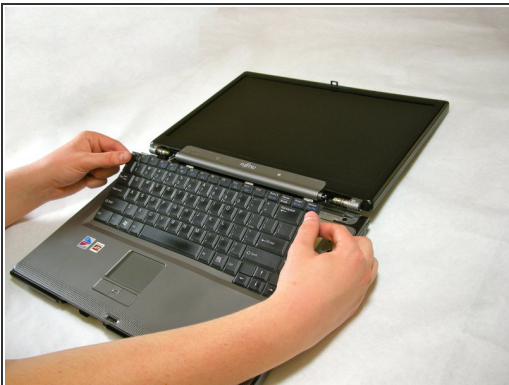



## Step 7



- Disconnect the ribbon cable from the motherboard and remove the hinge cover from the computer.

## Step 8 — Keyboard



 The keyboard has a ribbon cable that is attached to the motherboard. To prevent damage, lift keyboard slowly.

- Lift the keyboard enough to expose the ribbon cable.



## Step 9



- Use a spudger to release the ribbon cable from the motherboard.

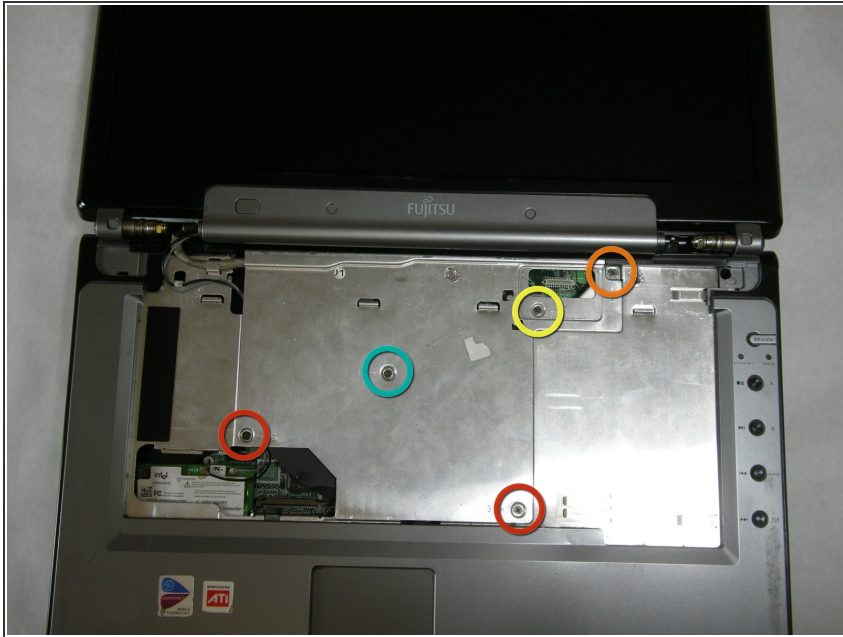
## Step 10



- After the ribbon has been detached, carefully remove the keyboard.



## Step 11 — Metal Motherboard Cover



- Remove the following screws, all labeled "3."
  - Two 8.63mm screws.
  - One 7.65mm screw.
  - One 5.74mm screw.
- Remove the following screw, labeled "15."
  - One 17.81mm screw.

## Step 12



- Lift the cover with fingers and remove.



## Step 13 — Display



- Remove labeled screws.

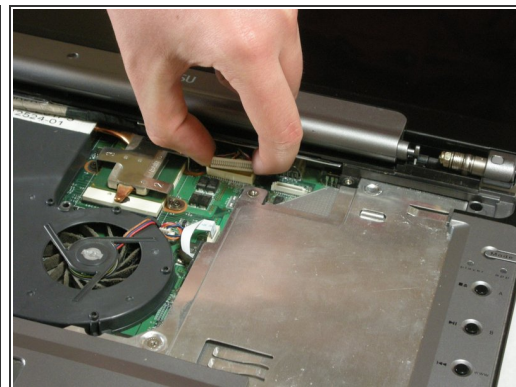
## Step 14



- Remove the screws from the bottom of the hinge as shown in the image.



## Step 15



- Use a spudger to detach and remove cables from the motherboard.

## Step 16



- Unplug highlighted cables from the wireless module.



## Step 17



- Hold down the body of the computer by placing your hands in the pictured positions. Then, lift the display from the body.

## Step 18 — Top Palm Rest Cover



- Remove the 4 labeled screws.



## Step 19



- Remove screws from bottom of laptop as shown in the picture.

## Step 20



- Lift the palm rest cover from the base of the laptop.
- You may use spudger if needed, lift from the front corners as shown.

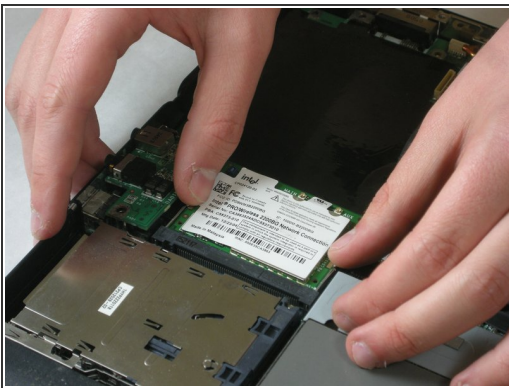


## Step 21



- Great job! You have successfully removed the old palm rest cover.

## Step 22 — Wireless Module



- Push securing clips outward, the wireless module will pop out.
- Remove the wireless module.



## Step 23



- A picture of the removed wireless module is shown to the left.

To reassemble your device, follow these instructions in reverse order.