



Fujitsu Lifebook A6110 RAM Replacement

This guide will provide you with a step-by-step process for locating and replacing the computer's RAM.

Written By: Cody Moniz



INTRODUCTION

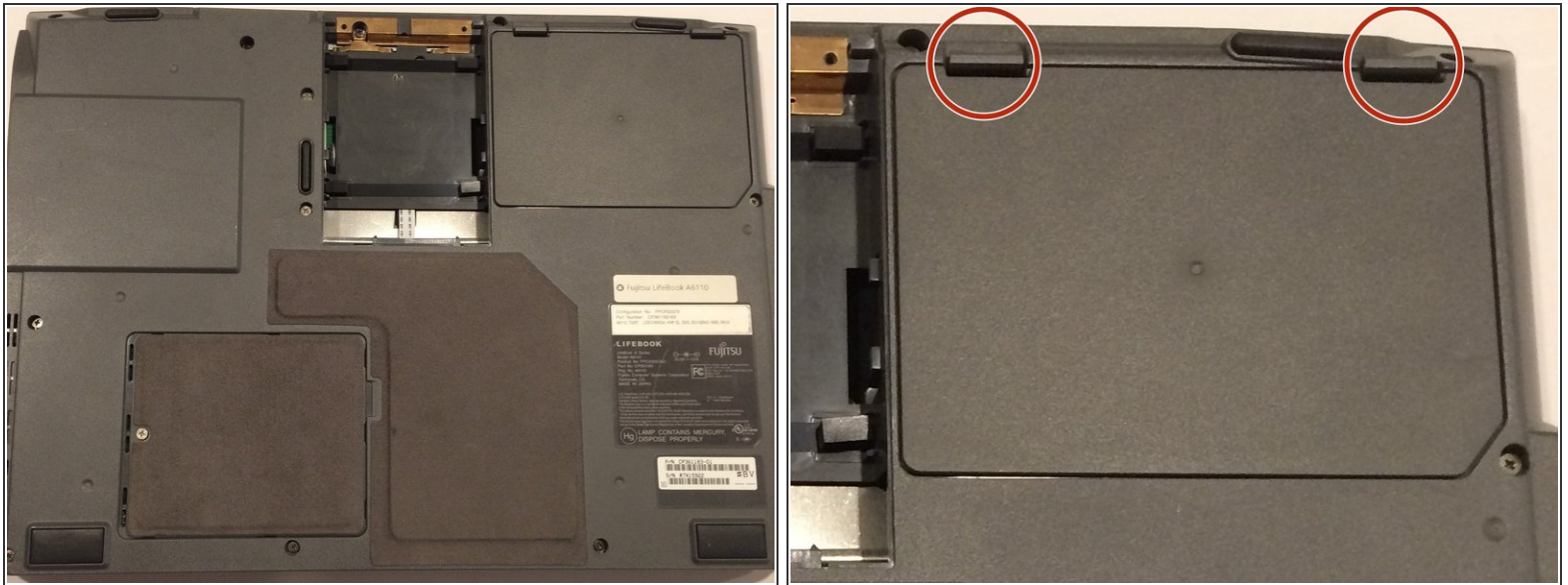
If your laptop is slowing down without warning, or you just want to upgrade the system's memory, then you will need to remove your RAM. This guide will show you the steps for this process.



TOOLS:

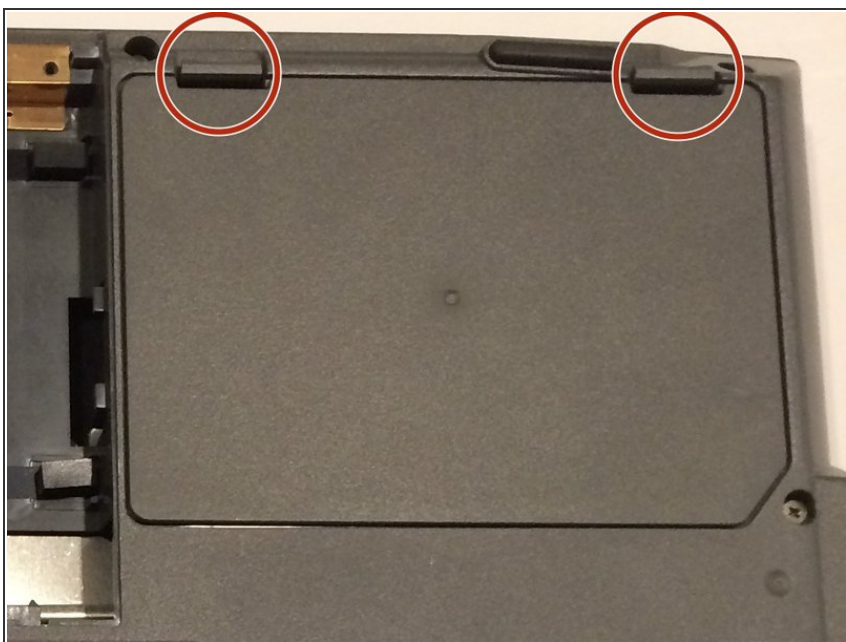
- [Phillips #1 Screwdriver](#) (1)
 - [Heavy-Duty Spudger](#) (1)
-

Step 1 — Battery



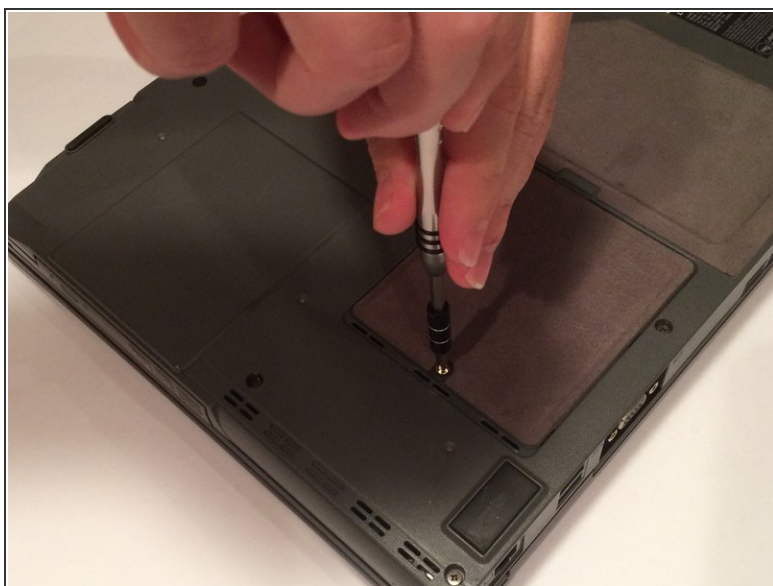
- ⚠ The computer should be turned off before starting. In addition, the laptop should remain closed throughout the duration of this replacement, unless otherwise noted.
- ⚠ Before handling any electronic components, you should ground yourself. This will prevent damage to the components from any charge you may be carrying. You can do this by touching any metal objects.
- Flip your laptop such that the bottom of the laptop is facing up.
- Make sure you can read the label on the bottom part. If the label is upside down, you will need to re-position the laptop until you can properly read it. As an alternative, the hinges for the screen should be facing towards you.

Step 2



- Place your fingers under the clips, and lift up on them while pulling them towards you.
- This will remove the battery.

Step 3 — RAM



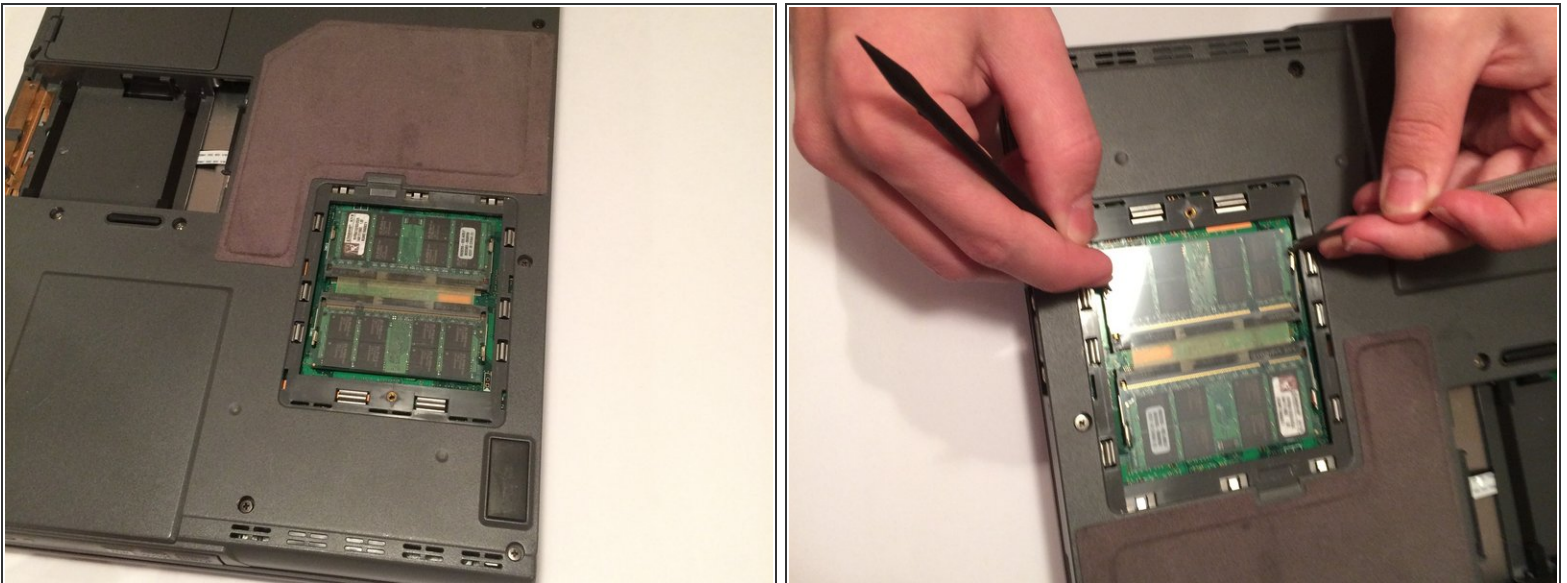
- The RAM compartment will be located towards the bottom-left corner. It will be behind the cover held in place by a 6 mm screw
- Using a Phillips #1 screwdriver, remove the 6 mm screw by turning your screwdriver counter-clockwise.

Step 4



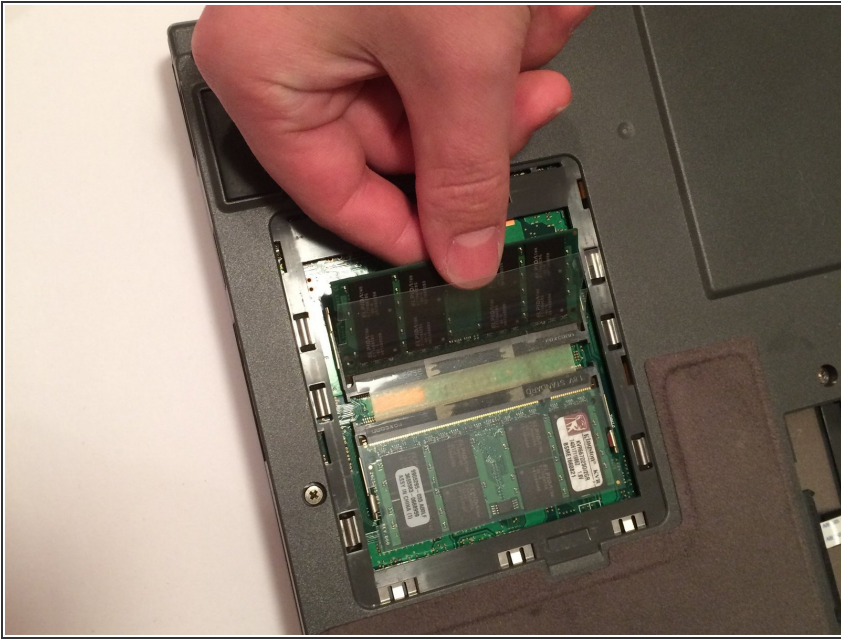
- Slide the cover towards the screw, and then lift up the cover.

Step 5



- ① There are two RAM cards in this compartment. They look like small green motherboards with black squares on them. Each of these cards is located under a thin plastic sheet.
- There are two metal and plastic clips on each shorter side of both RAM cards. Simultaneously pull each of these away from the center of the card you are currently replacing. If done correctly, the RAM chip will pop up at a 45 degree angle on its own.

Step 6



- Pull the plastic sheet up so that it is out of the way. While the plastic sheet is out of your way, pull the RAM card out while maintaining the same angle that it popped out at.
- ★ When reassembling, make sure the gold pins on the RAM card match the corresponding pins found on the motherboard.
- ⓘ If you choose to replace the other RAM chip, repeat the same process for that card.

To reassemble your device, follow these instructions in reverse order.