



Fujitsu Lifebook S6120 Hinge Cover Replacement

Use this guide to replace the hinge cover in your Fujitsu Lifebook S6120.

Written By: Jaimie Nakamura



INTRODUCTION

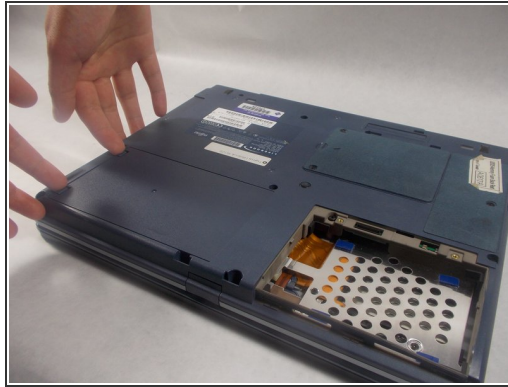
If the power button, wireless switch, or volume toggle is unresponsive you may have to take off the hinge cover.



TOOLS:

- [Tweezers](#) (1)
 - [iFixit Opening Tools](#) (1)
-

Step 1 — Battery



 To prevent injury, make sure the laptop is unplugged and turned off before removing the battery.

- Push the two tabs in towards the laptop.
- Lift the battery up and out from the frame of the laptop.

Step 2 — Hinge Cover



- Use a plastic opening tool to lift the back of the hinge cover on the left and right sides of the computer.

Step 3



- Lift the hinge cover.

⚠ The hinge cover is connected to the motherboard by a ribbon cable. To prevent damage, lift hinge cover slowly.

Step 4



- Use the tweezers to disconnect the ribbon cable from the motherboard.

Step 5



- With the tweezers detach hinge cover cables from the motherboard.
- Remove hinge cover.

To reassemble your device, follow these instructions in reverse order.