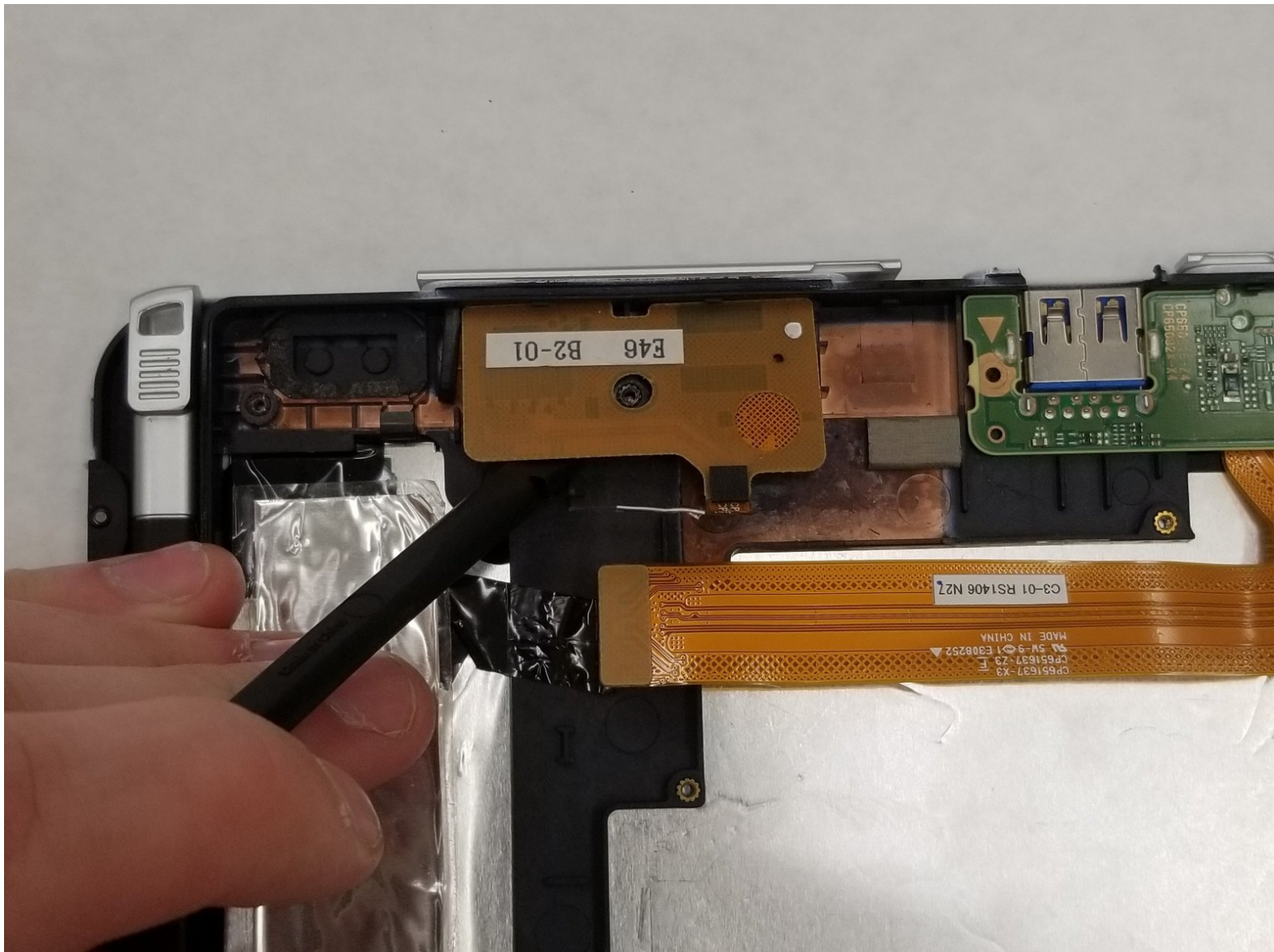




# Fujitsu Lifebook Stylistic Q584 MicroSD Card Replacement

How to replace a Fujitsu Lifebook Stylistic Q584 microSD card.

Written By: Casey



# INTRODUCTION

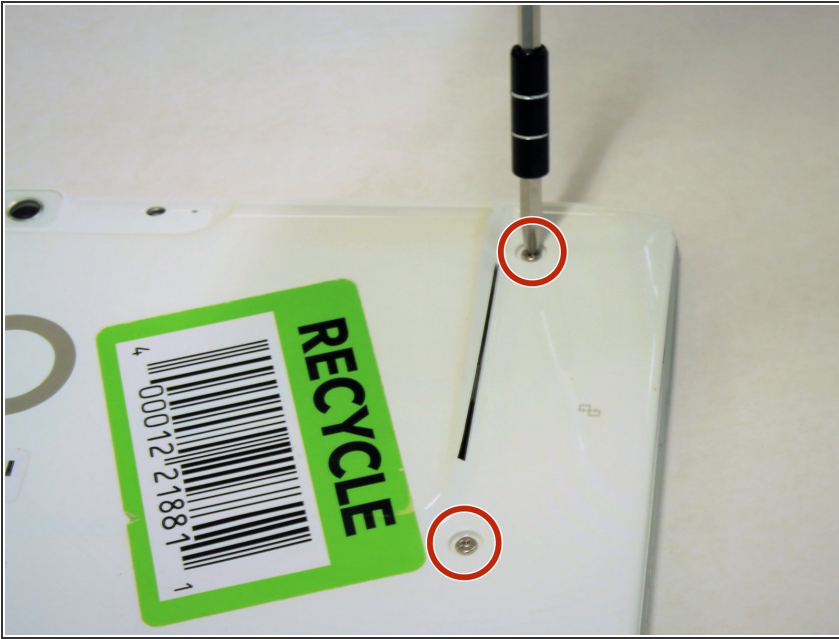
This guide allows the user to access and replace the MicroSD card of a Fujitsu Lifebook Stylistic Q584.



## TOOLS:

- [iFixit Opening Tools](#) (1)
  - [Phillips #1 Screwdriver](#) (1)
  - [Phillips #00 Screwdriver](#) (1)
  - [Spudger](#) (1)
-

## Step 1 — Back Case



- Remove the white sticker covering the screws *(if applicable)*.
- Use the PH1 screwdriver to remove the four 2 mm screws from the the backside of the device.

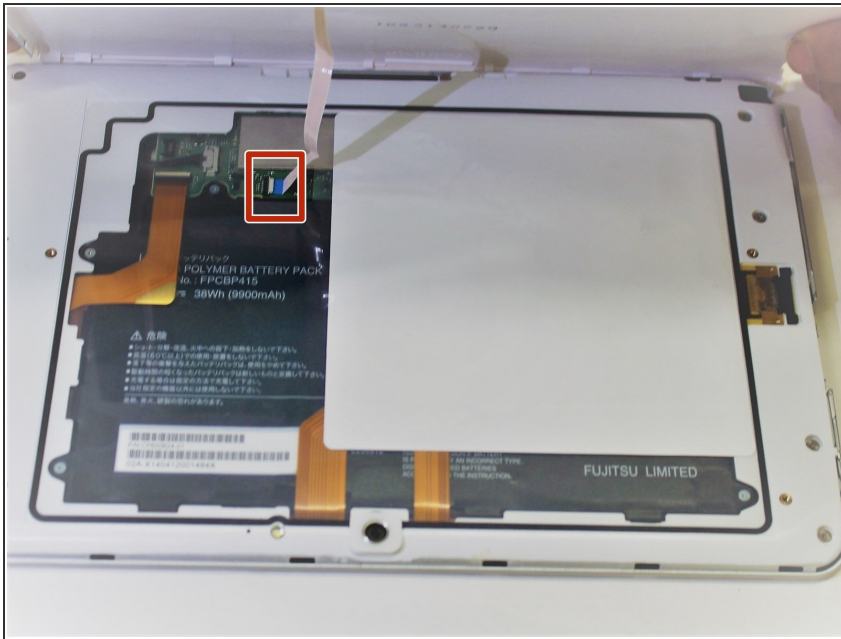
## Step 2



- Insert the plastic opening tool along the seam of the back case.
- Gently slide the plastic opening tool along the entire seam popping the clips free.

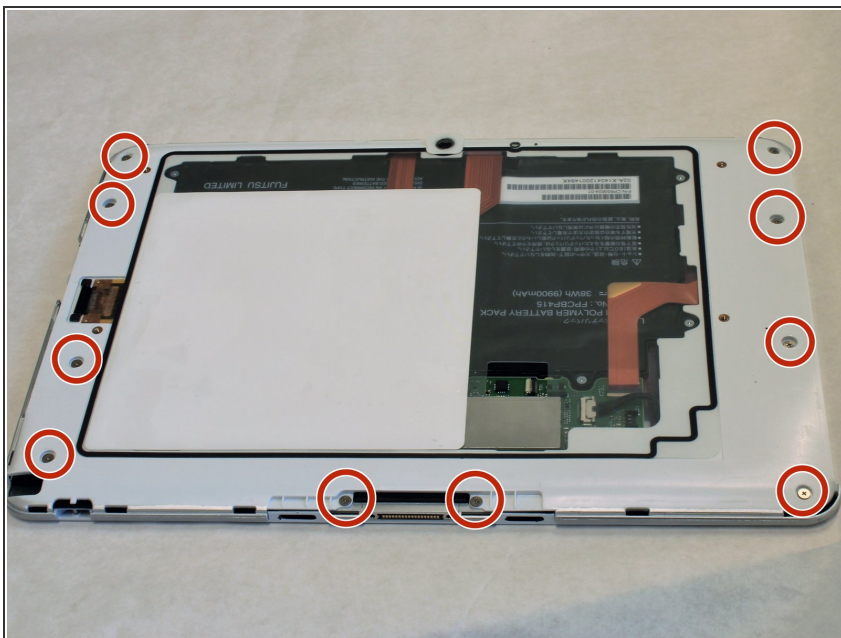


### Step 3



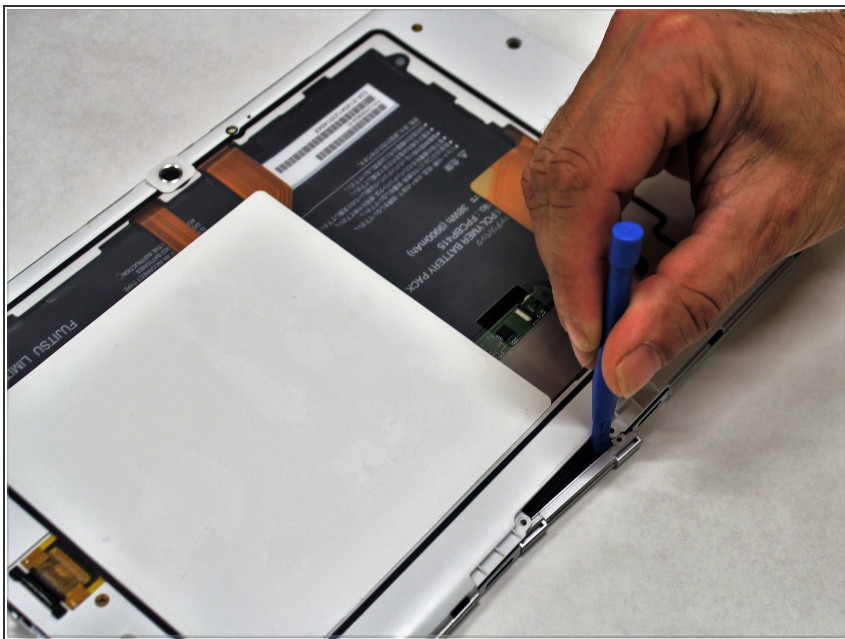
- Carefully lift the back case and remove the smartcard ribbon from the motherboard.

### Step 4 — Inner Back Shield



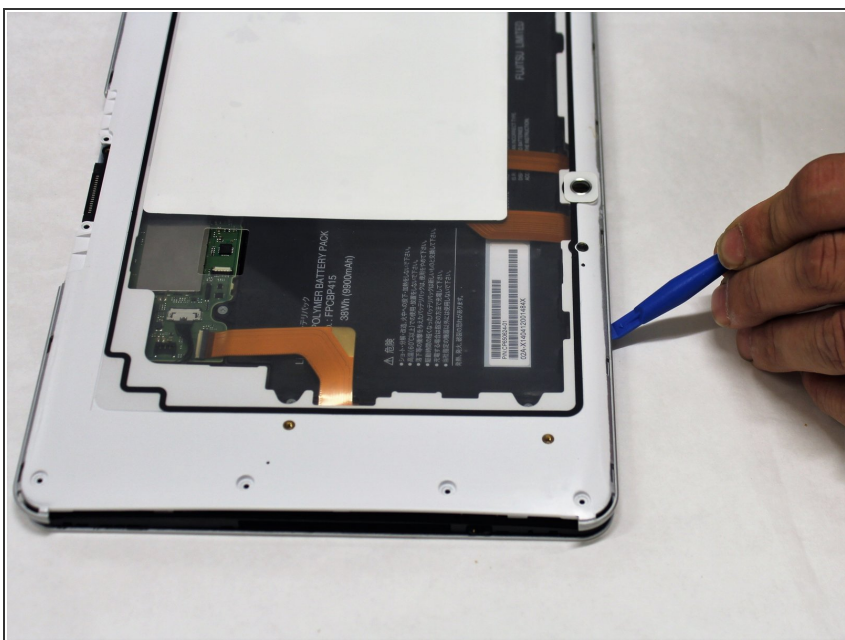
- Remove the ten 3mm screws with a PH00 screwdriver from the shield.

## Step 5



- Remove the grey docking station port cover.

## Step 6



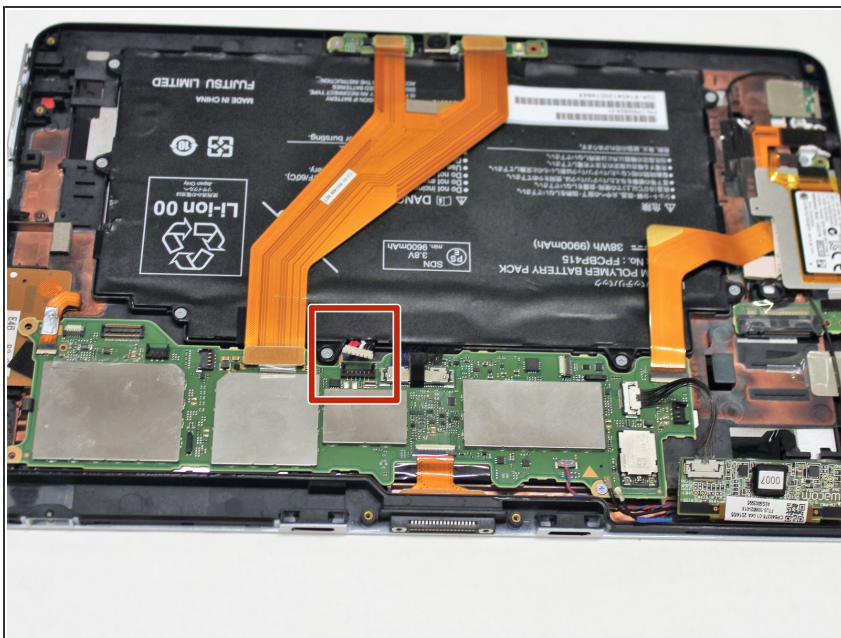
- Gently slide the plastic opening tool along the entire seam popping the clips free.

## Step 7



- Lift the shield away from the device and remove the fingerprint scanner's ribbon from the motherboard.

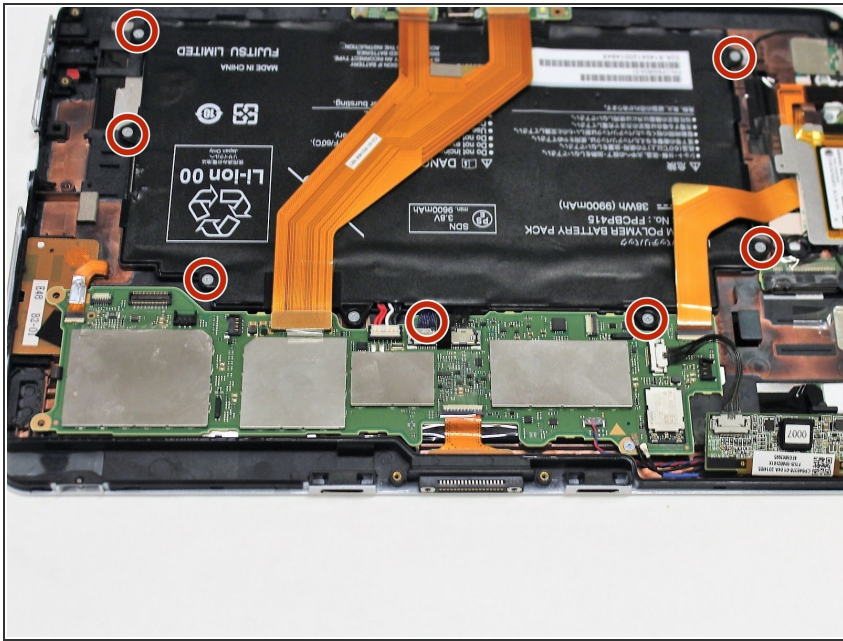
## Step 8 — Battery



- Pull up the cord that connects the battery to the motherboard

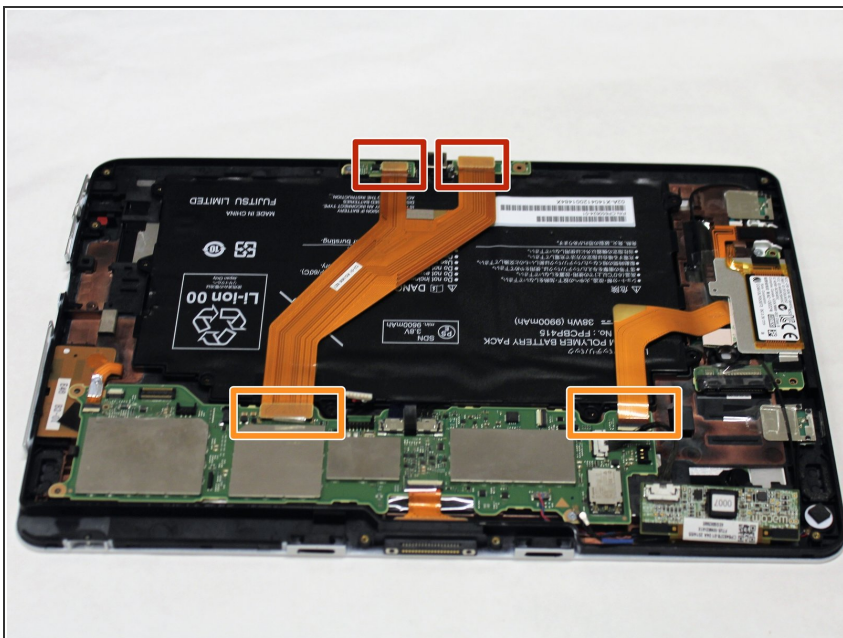


## Step 9



- Remove seven 1mm screws using a PH00 screwdriver.

## Step 10



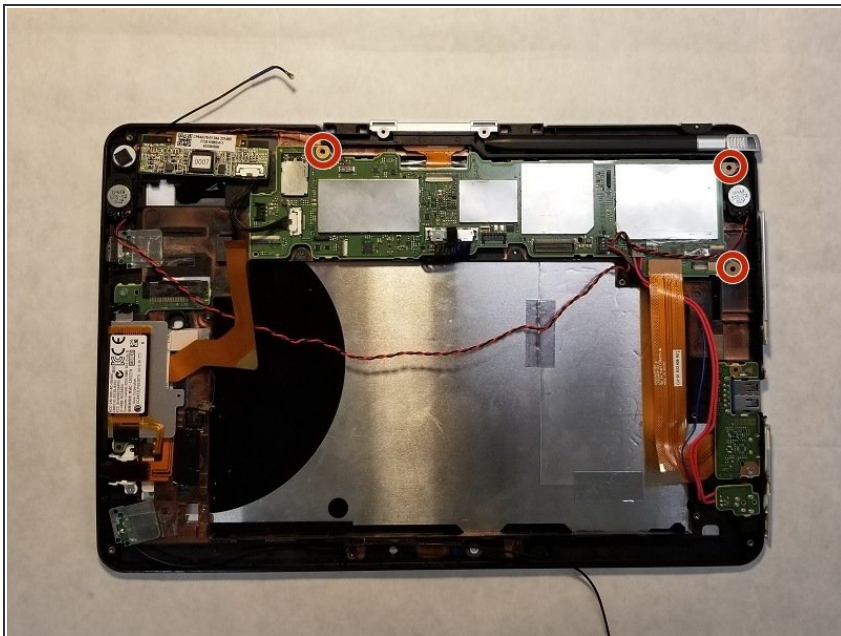
- Disconnect upper peripheral ribbons from motherboard.
- Disconnect left peripheral ribbon from motherboard.

## Step 11



- Gently lift the battery from the casing.

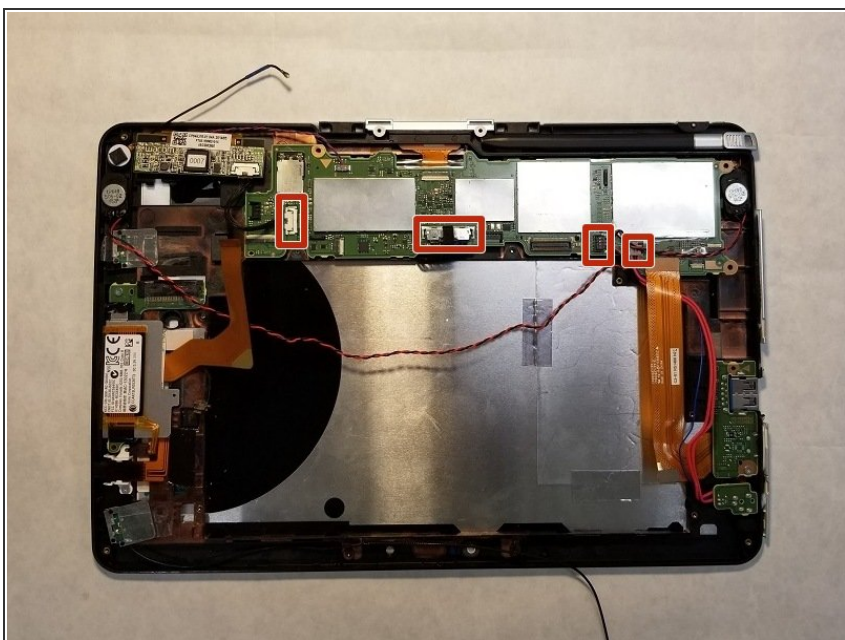
## Step 12 — Motherboard



- Remove three 3mm screws using a PH00 screwdriver.

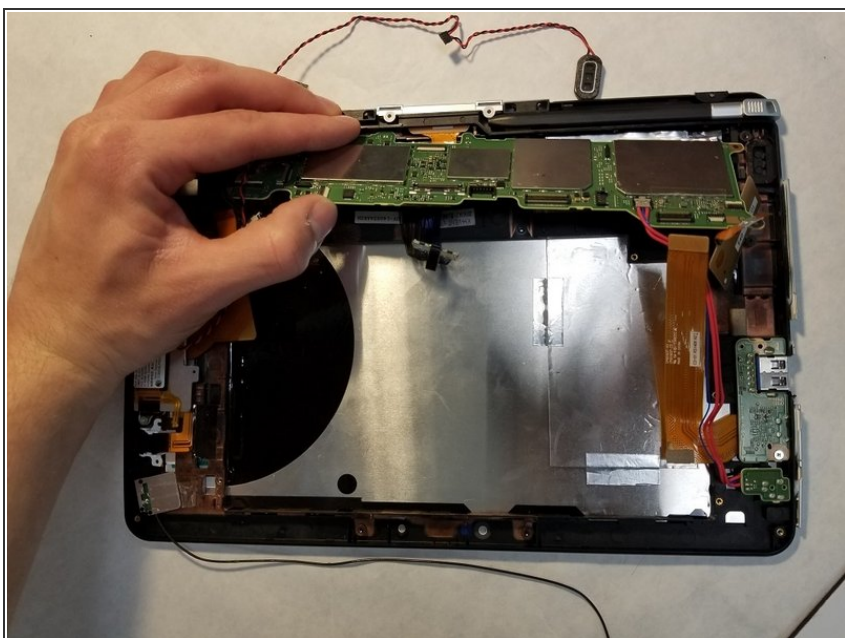


## Step 13



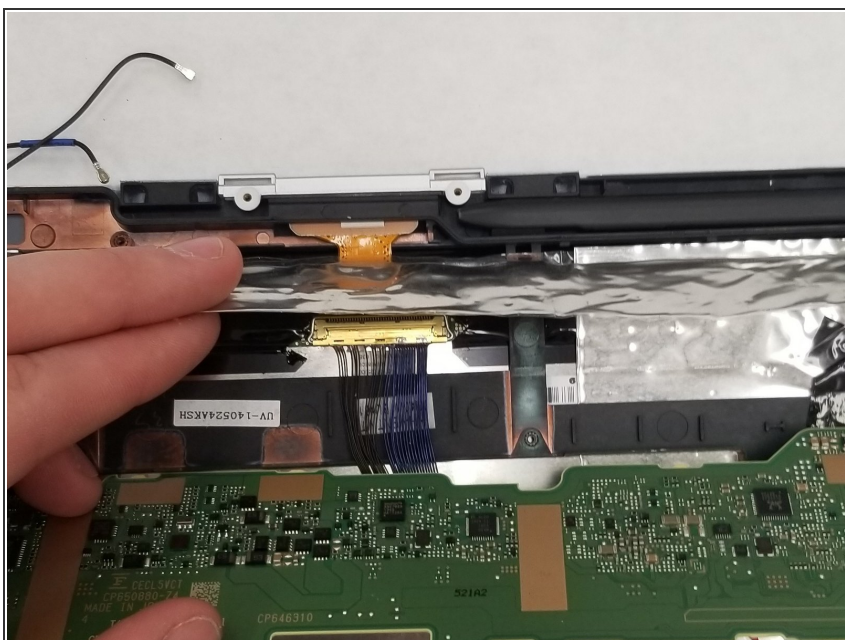
- Remove all of the ribbon connector cables from the motherboard using an ESD-safe spudger.

## Step 14



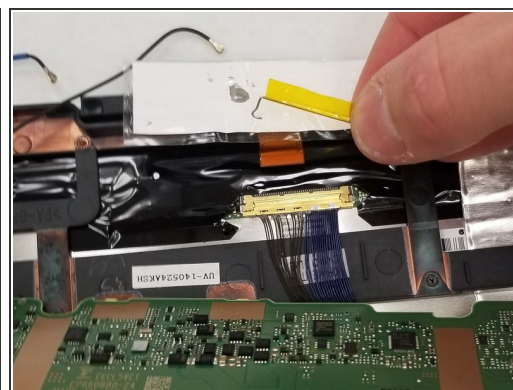
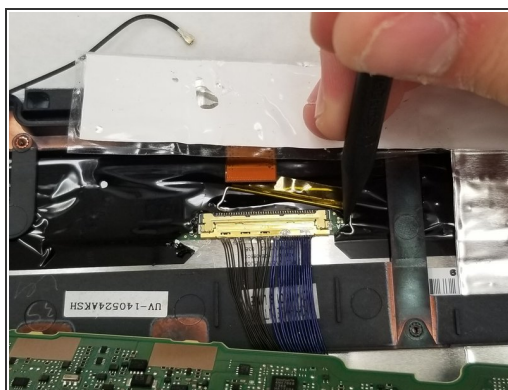
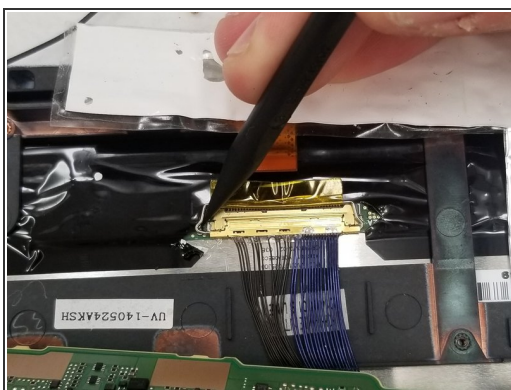
- Gently pry up the motherboard.

## Step 15



- Gently lift the foil tape under the motherboard to reveal the connector.

## Step 16



- Remove the clip holding in the connector with an ESD-safe spudger.

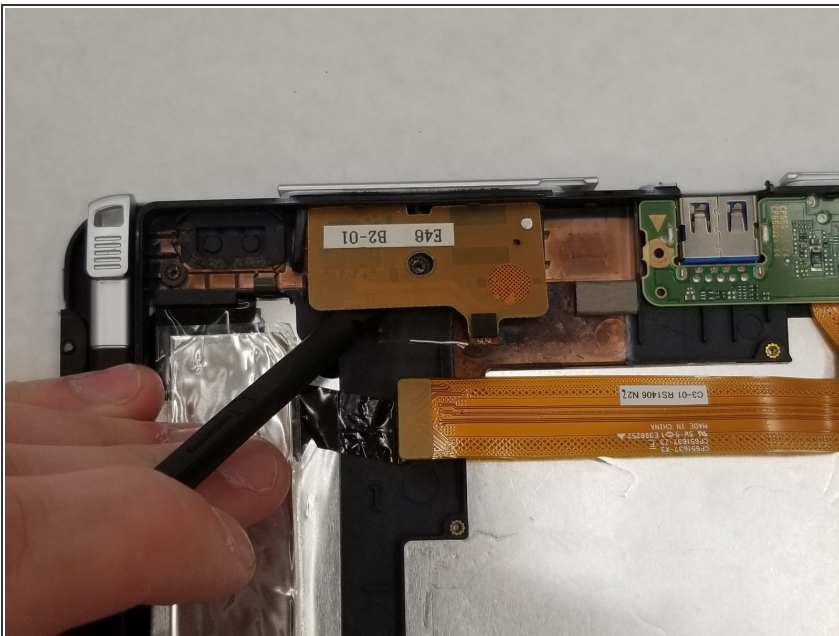


## Step 17



- Remove the connector with an ESD-safe spudger.

## Step 18 — MicroSD Card



- After removing the motherboard, use an ESD-safe spudger to pry up the MicroSD card from the slot.
- Gently separate the MicroSD card from the device.

To reassemble your device, follow these instructions in reverse order.