



Fujitsu M2011 Hard Drive Replacement

This guide will demonstrate how to remove the hard drive in the Fujitsu M2011.

Written By: Brandon Stowers



INTRODUCTION

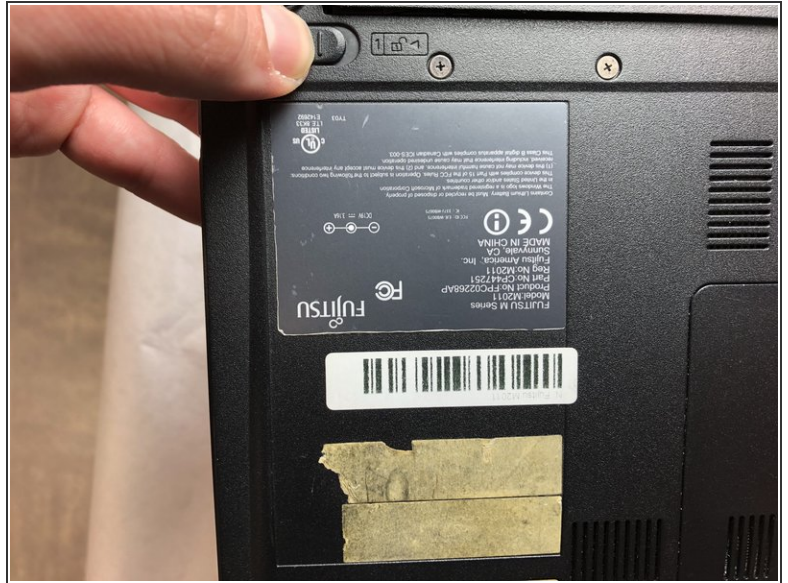
The tools you will need to replace the hard drive will be a Phillips screw driver. This repair may be required if your computer is running slow, or you have received an error for hard drive corruption.



TOOLS:

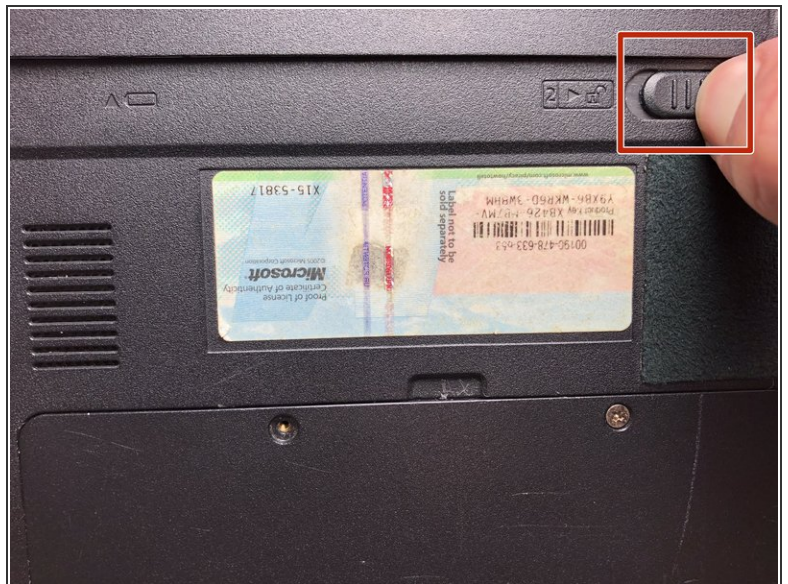
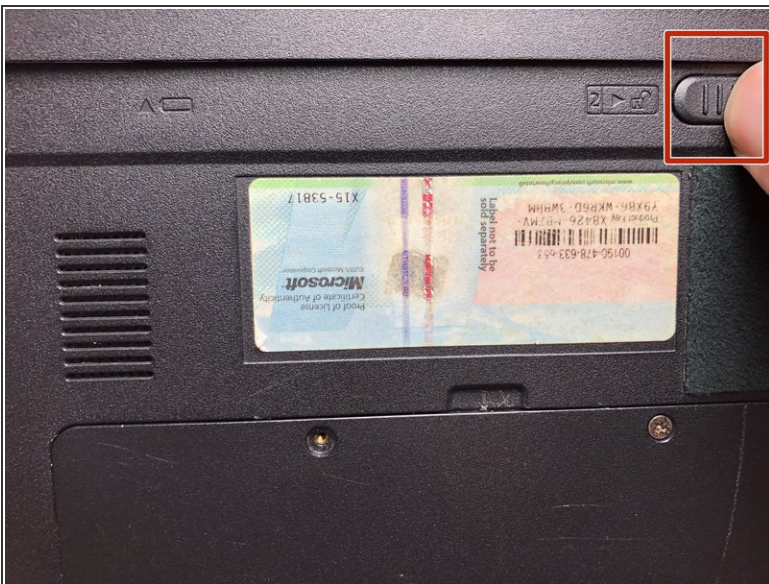
- [Phillips #0 Screwdriver](#) (1)
-

Step 1 — Battery



- Slide switch #1 (shown) to the left.

Step 2



- Slide switch #2 (shown) to the right and hold.

Step 3



- Pull the battery straight back out.

Step 4 — Hard Drive



- Remove the two 3 mm PH0 screws holding hard drive in place.

Step 5



- Unfold the black tab attached to hard drive.

Step 6



- Remove the hard drive by pulling the black tab.

To reassemble your device, follow these instructions in reverse order.