



Fujitsu M2011 Keyboard Replacement

This guide will demonstrate how to remove the keyboard for the Fujitsu M2011 laptop.

Written By: Spencer Spaulding



INTRODUCTION

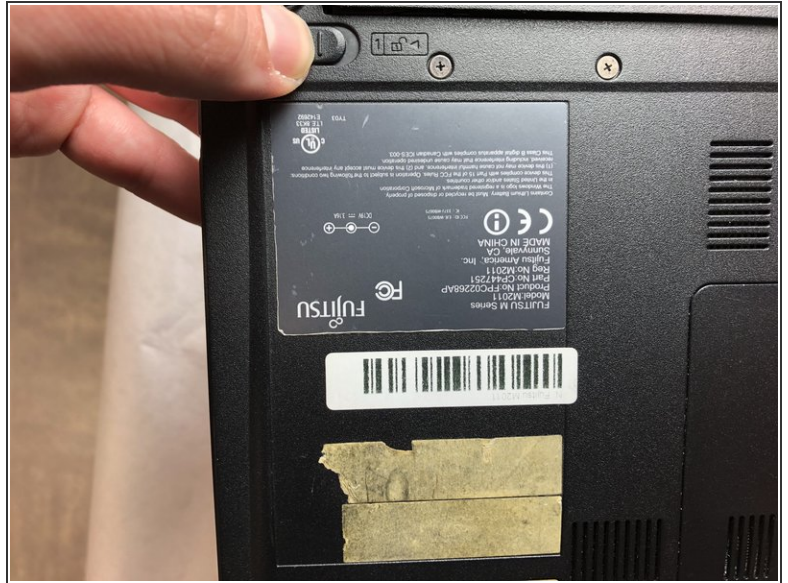
In order to remove the keyboard, you will need a Phillips screwdriver. This repair may be required if your keyboard is damaged or unresponsive.



TOOLS:

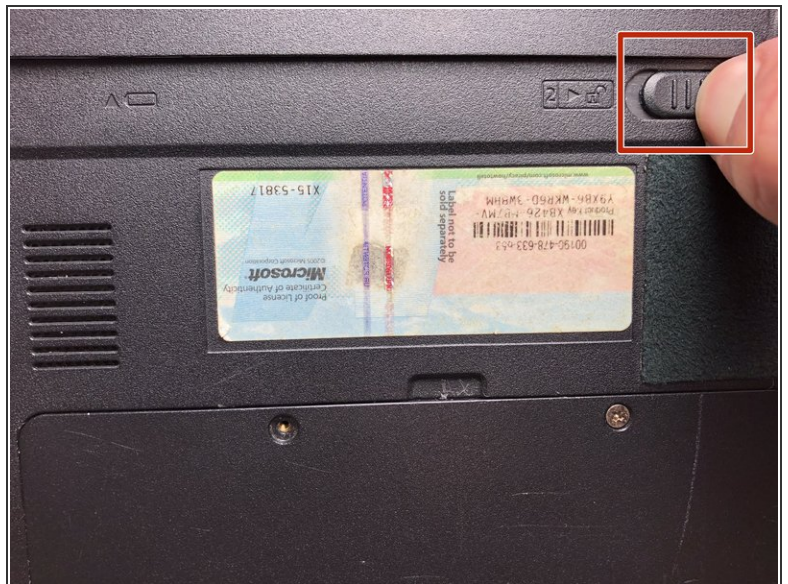
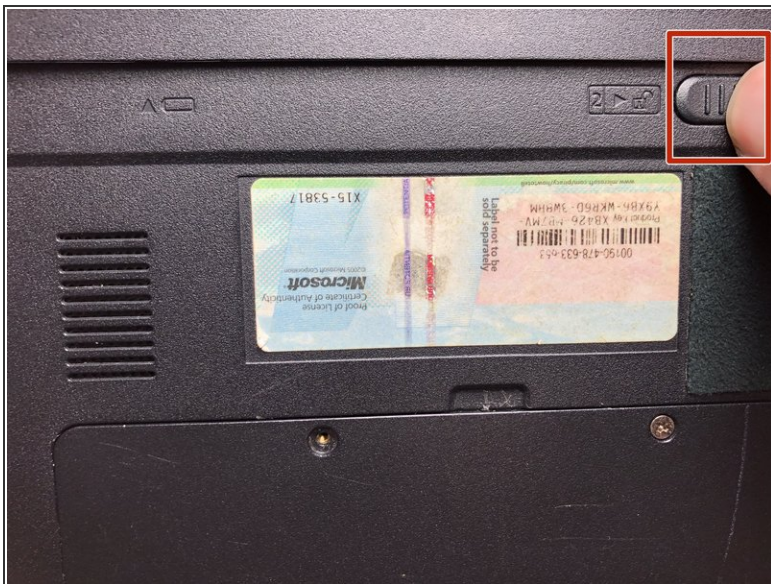
- [Phillips #0 Screwdriver](#) (1)
-

Step 1 — Battery



- Slide switch #1 (shown) to the left.

Step 2



- Slide switch #2 (shown) to the right and hold.

Step 3



- Pull the battery straight back out.

Step 4 — Keyboard



- Remove the three 4.6 mm PH0 screws in battery chamber.

Step 5



- Lift the black plate with the power button gently.

Step 6



- Remove the keyboard.
- ⓘ There will be tape on the wired connection to the motherboard.

To reassemble your device, follow these instructions in reverse order.